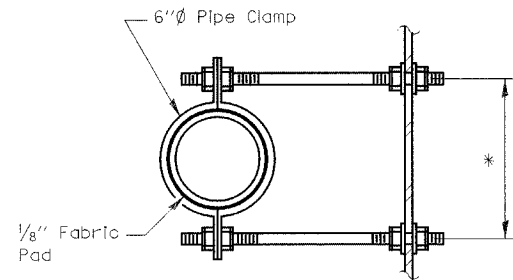
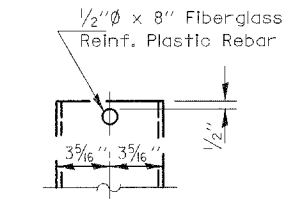


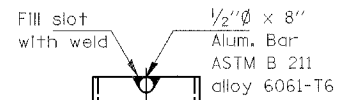
• Dimension as required by Pipe Clamp



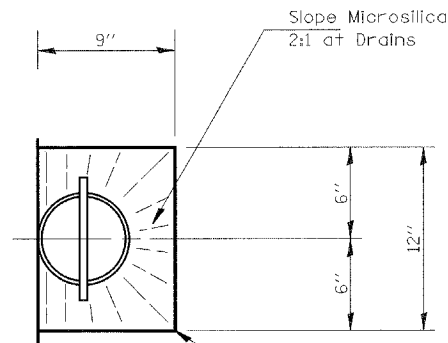
SECTION A-A



FIBERGLASS PIPE

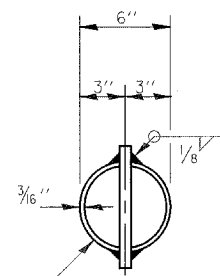


ALUMINUM TUBE



TOP PLAN

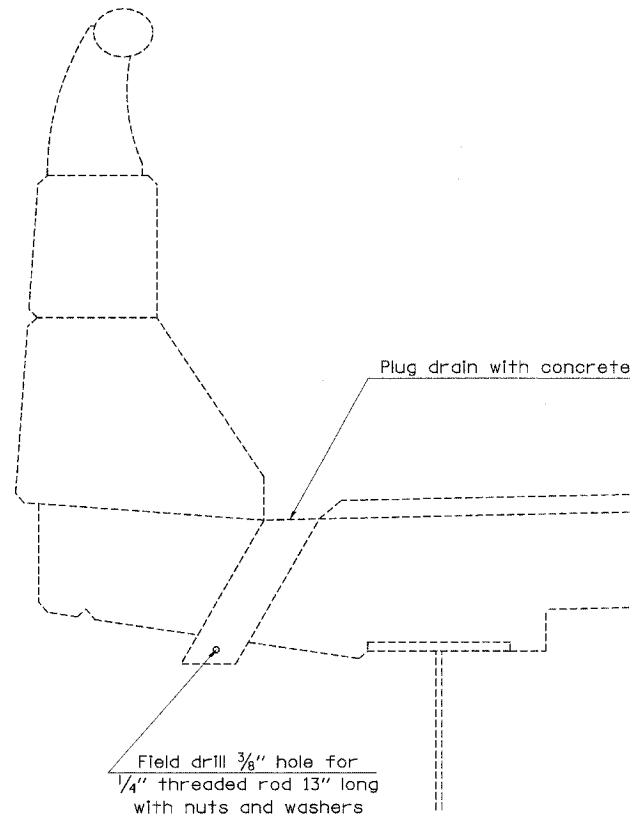
Surface of Original Concrete Deck



TOP PLAN

(Showing Aluminum Tube)

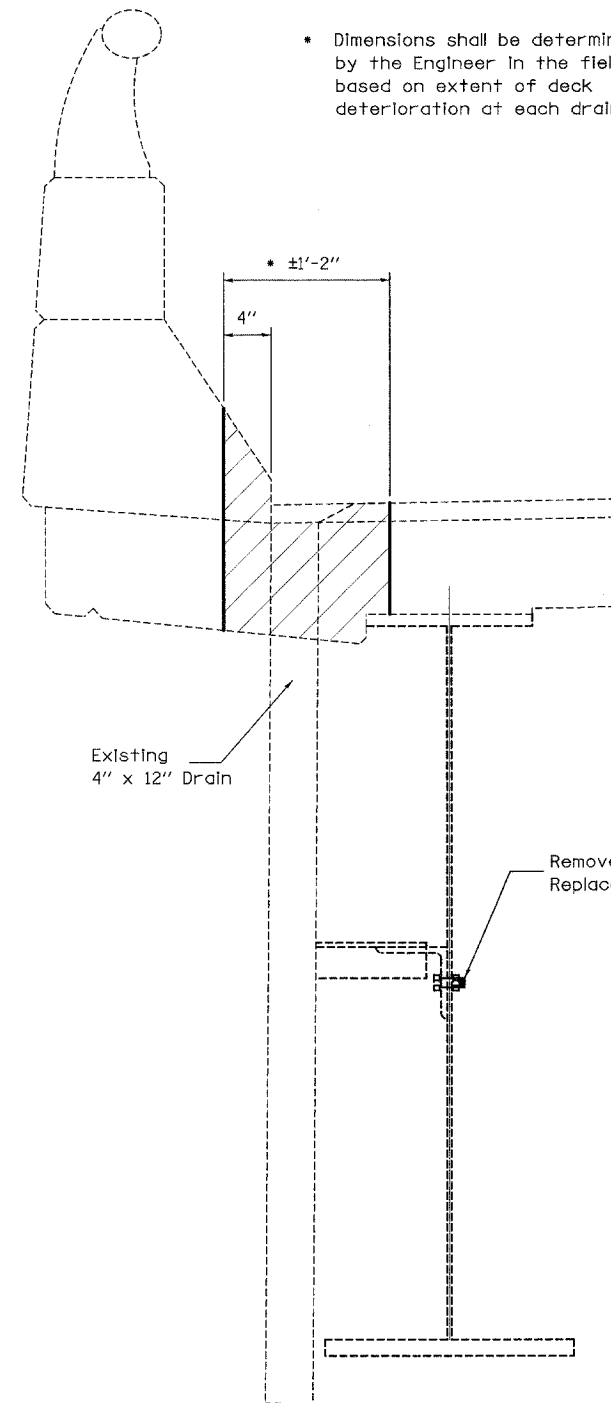
Note: Fiberglass pipe shall conform to ASTM D 2996, with short-time rupture strength hoop tensile stress of 30,000 p.s.i. minimum.



DRAINS TO BE PLUGGED DETAIL

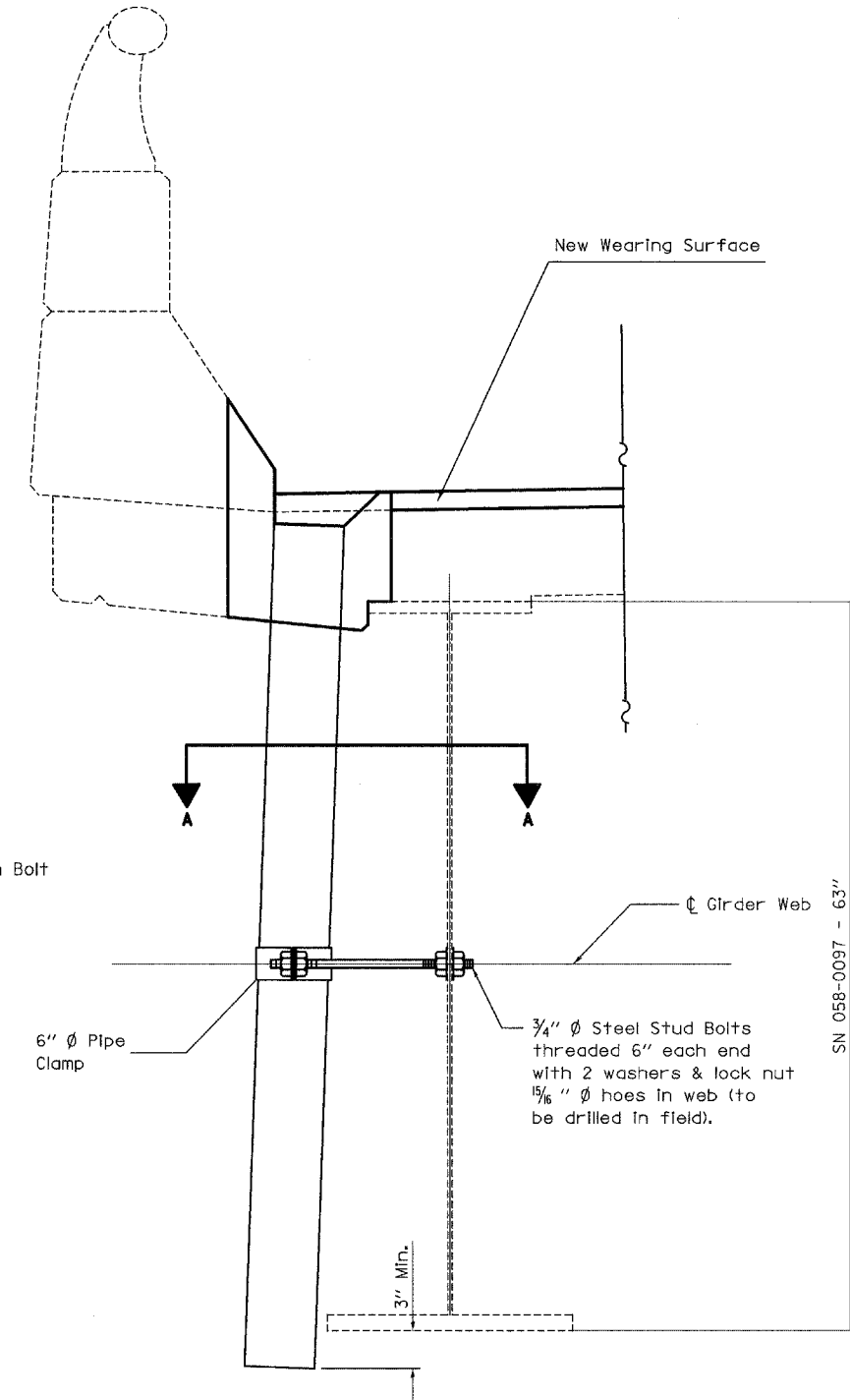
Note: See "Bridge Deck Patching" plan sheets for Plug Existing Deck Drains locations. See "Total Bill of Materials" for each structure for quantities.

• Dimensions shall be determined by the Engineer in the field based on extent of deck deterioration at each drain.



SECTION THRU EXISTING FLOOR DRAIN

Hatched area indicates concrete removal at floor drain replacement.



DRAIN REPLACEMENT DETAIL

Note: See "Bridge Deck Patching" plan sheets for Floor Drain replacement locations. See "Total Bill of Materials" for each structure for quantities.

FILE NAME = c:\projects\74171d\korenbridge.dgn	USER NAME = swartzw	DESIGNED -	REVISED -
		DRAWN -	REVISED -
	PLOT SCALE = 20,0000' / IN.	CHECKED -	REVISED -
	PLOT DATE = 3/20/2005	DATE -	REVISED -

**STATE OF ILLINOIS
DEPARTMENT OF TRANSPORTATION**

FLOOR DRAIN DETAIL
SCALE: N/A SHEET NO. 48 OF 52 SHEETS STA. TO STA.

F.A.I. RTE. 72	SECTION (58,74X66,67)RS-1	COUNTY MACON	TOTAL SHEETS 88	SHEET NO. 7
FED. ROAD DIST. NO.		ILLINOIS FED. AID PROJECT		

SN 058-0097 - 63"
SN 058-0093/94/95/96 - 57"

SHEET NO.
52 SHEET