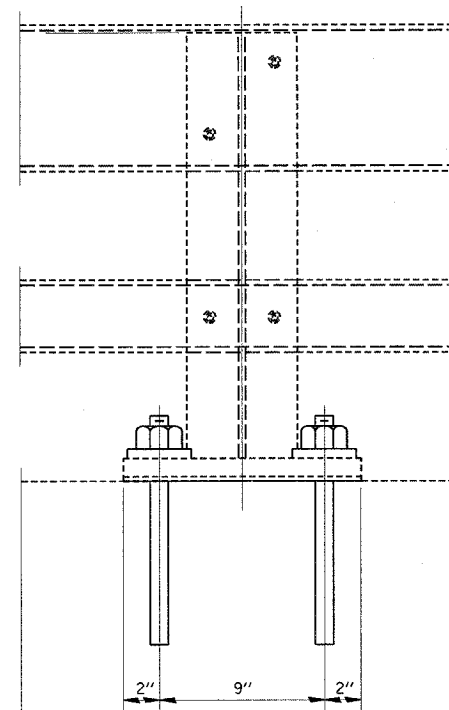
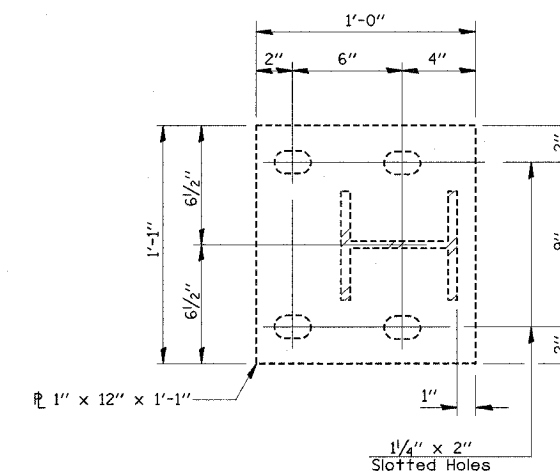


4 - 1"  $\varnothing$  H.S. Threaded Anchor Rods with hex nuts and lock washers, drilled and set according to Article 509.06 of the Standard Specifications.

**SECTION AT RAIL POST**



**SECTION A-A**



**BASE PLATE DETAIL**

Rail post and base plate shown for information only.

FILE NAME =	USER NAME = tholek1	DESIGNED -	REVISED -
cr\projects\74251d\karenbridge_74251.dgn		DRAWN -	REVISED -
		CHECKED -	REVISED -
		DATE -	REVISED -

**STATE OF ILLINOIS  
DEPARTMENT OF TRANSPORTATION**

**RAIL SUPPORT POST DETAIL  
SN 025-0030**

SCALE: SHEET NO. OF SHEETS STA. TO STA.

F.A.P. RTE.	SECTION	COUNTY	TOTAL SHEETS	SHEET NO.
774		EFFINGHAM	33	15
FED. ROAD DIST. NO.			ILLINOIS FED. AID PROJECT	
			CONTRACT NO. 74251	

SHEET NO. 5  
7 SHEETS

• (1-1MFT,1-WMFT,104Z,104RS-2