

STATE OF ILLINOIS
 DEPARTMENT OF TRANSPORTATION
 DIVISION OF HIGHWAYS

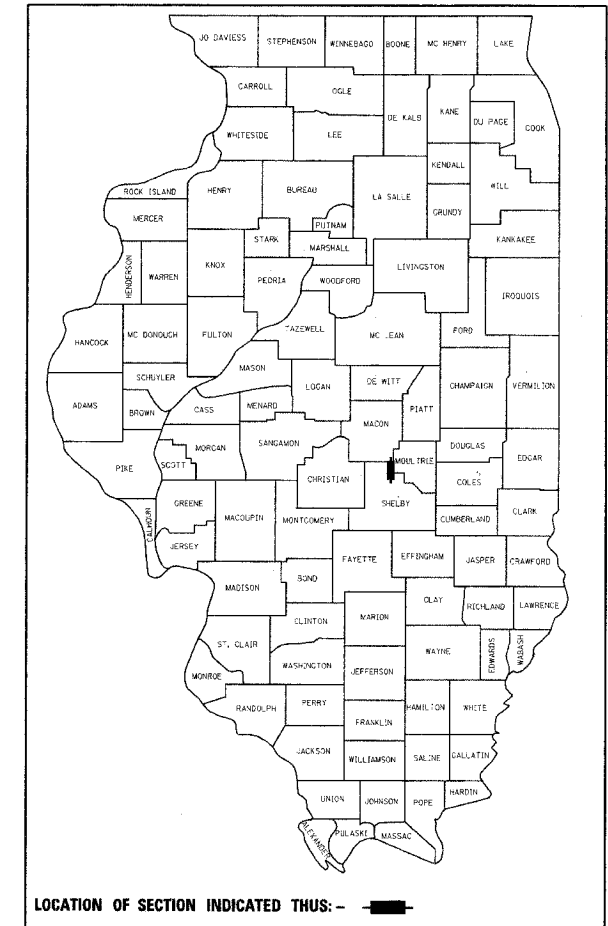
**PROPOSED
 HIGHWAY PLANS**

FAP ROUTE 770 (IL 128)
 D7 BEAM REPAIR 2008-6

MOULTRIE COUNTY
 C-97-059-08

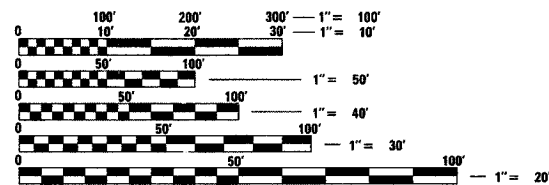
F.A.P. RTE.	SECTION	COUNTY	TOTAL SHEETS	SHEET NO.
770	D7 BEAM REPAIR 2008-6	MOULTRIE	7	1
FED. ROAD DIST. NO.	ILLINOIS	CONTRACT NO. 74309		

D-97-022-08



FOR INDEX OF SHEETS, SEE SHEET NO. 2

ADT (2005) = 2800

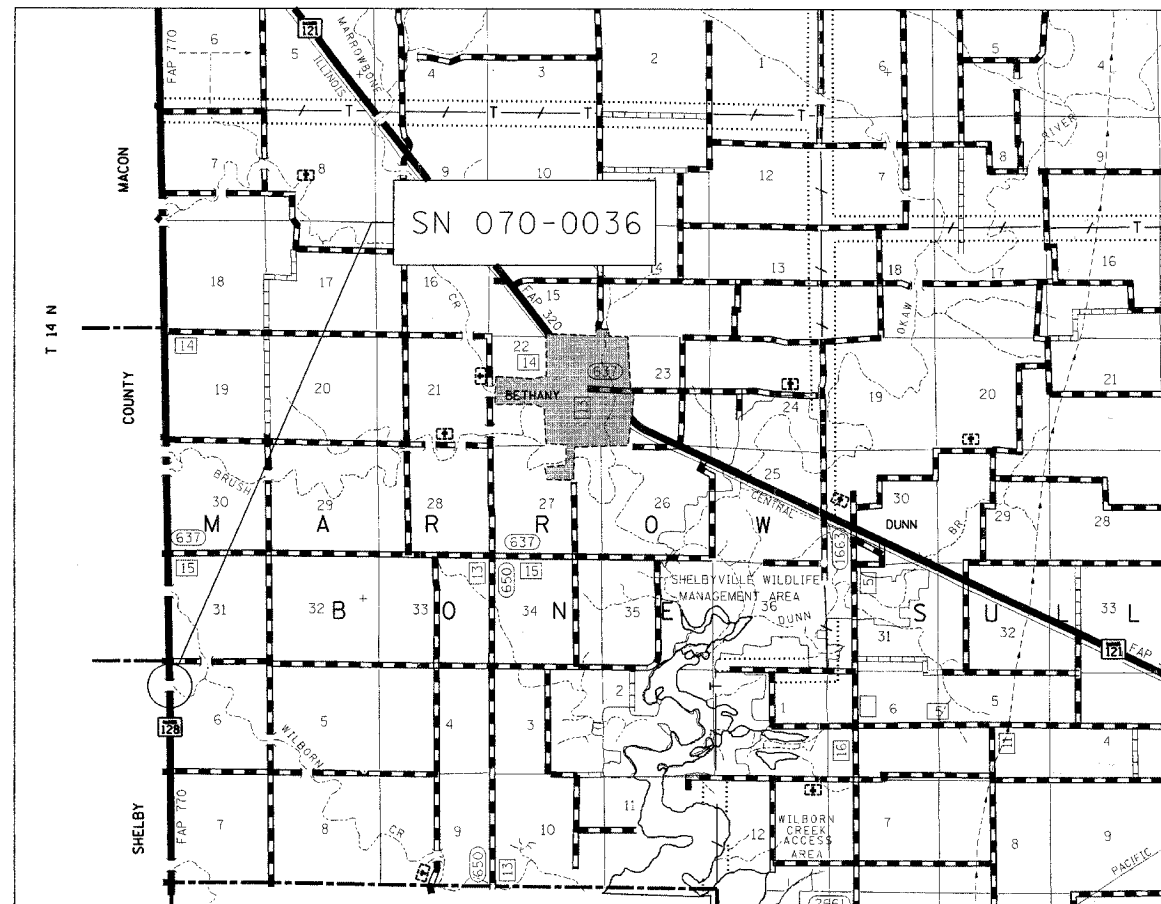


FULL SIZE PLANS HAVE BEEN PREPARED USING STANDARD ENGINEERING SCALES. REDUCED SIZED PLANS WILL NOT CONFORM TO STANDARD SCALES. IN MAKING MEASUREMENTS ON REDUCED PLANS, THE ABOVE SCALES MAY BE USED.

J.U.L.I.E.
 JOINT UTILITY LOCATION INFORMATION FOR EXCAVATION
 1-800-892-0123
 OR 811

PROJECT ENGINEER: MARK DAUGHERTY
 PROJECT MANAGER: BRIAN J. BIERMAN

CONTRACT NO. 74309



STATE OF ILLINOIS
 DEPARTMENT OF TRANSPORTATION
 DIVISION OF HIGHWAYS

SUBMITTED April 8 20 08

Christine M. Reed
 DEPUTY DIRECTOR OF HIGHWAYS, REGION ENGINEER

May 9, 20 08
Eric E. Harsh
 INTERIM ENGINEER OF DESIGN AND ENVIRONMENT

May 9, 20 08
Christine M. Reed
 DIRECTOR OF HIGHWAYS, CHIEF ENGINEER

PRINTED BY THE AUTHORITY
 OF THE STATE OF ILLINOIS