

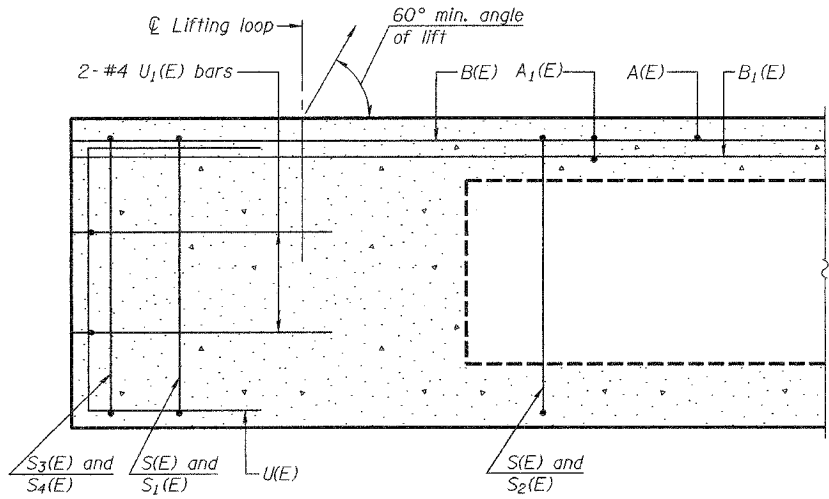
STATE OF ILLINOIS
DEPARTMENT OF TRANSPORTATION

ROUTE NO.	SECTION	COUNTY	TOTAL SHEETS	SHEET NO.
FAP 770	ΔΔ	Moultrie	7	6
FED. ROAD DIST. NO. 7	ILLINOIS	FED. AID PROJECT-		

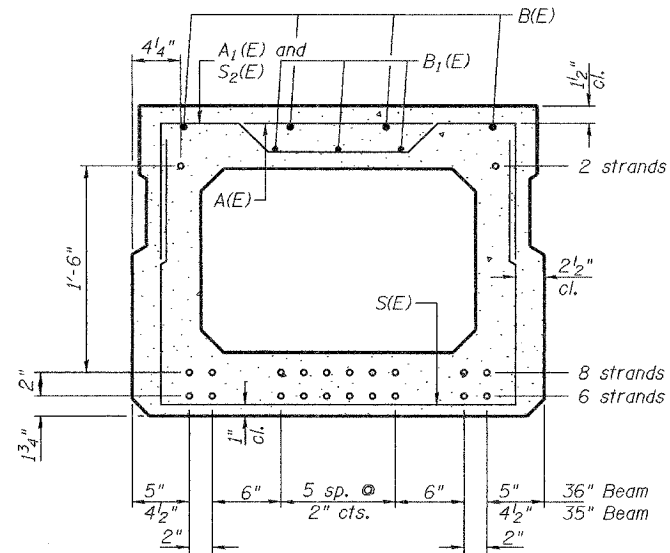
SHEET NO. 2

3 SHEETS

Contract Number: 74309
ΔΔ D7 Beam Repair 2008-6

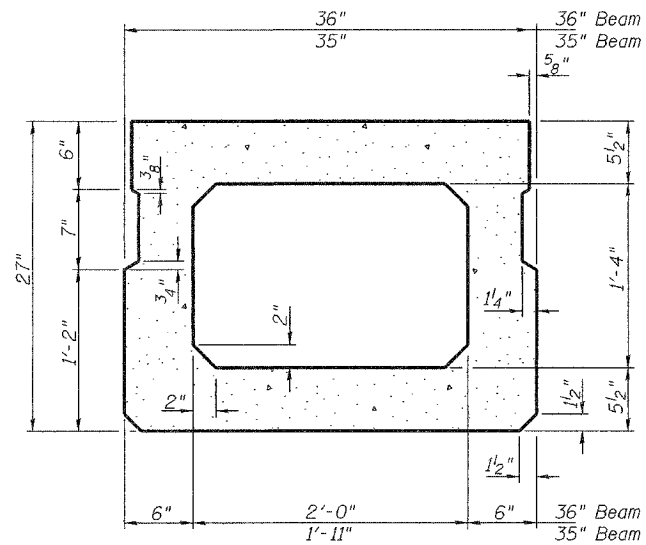


SECTION C-C



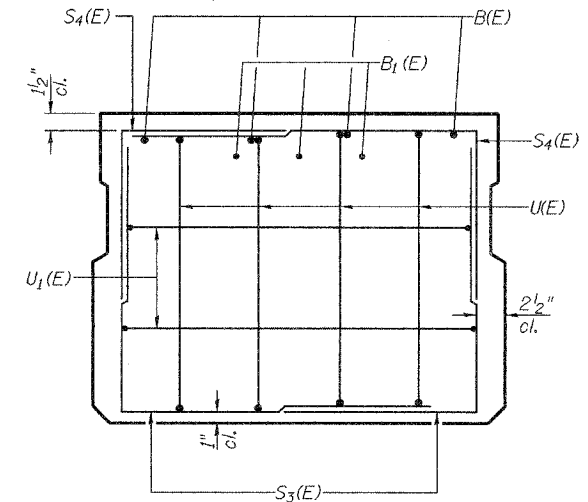
SECTION A-A

(Showing reinforcement and permissible strand locations)
Note: Place the number of strands specified in each row symmetrically about the centerline of beam in the permissible strand locations shown.



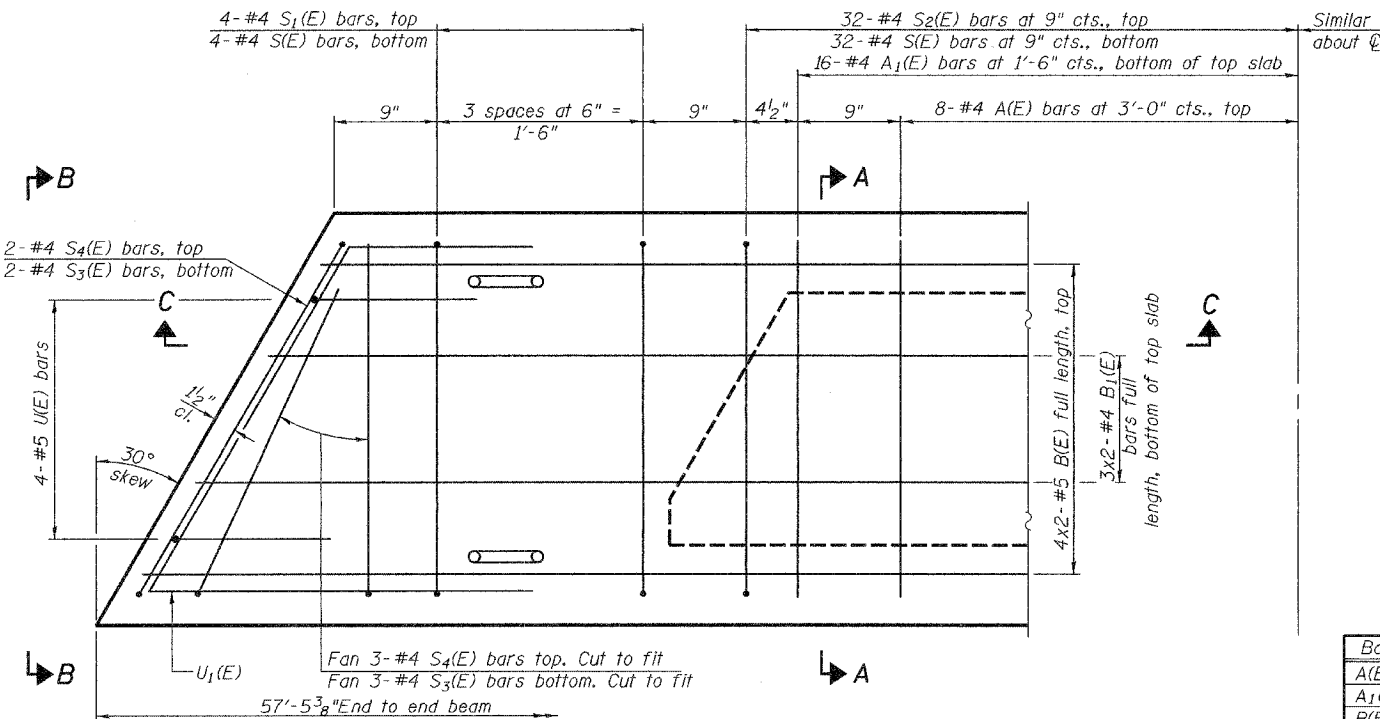
SECTION A-A

(Showing dimensions)

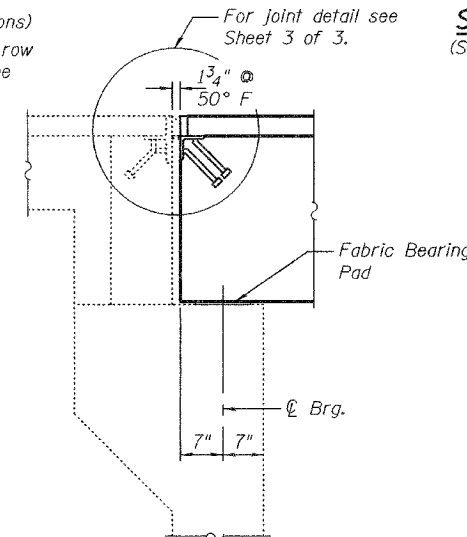


VIEW B-B

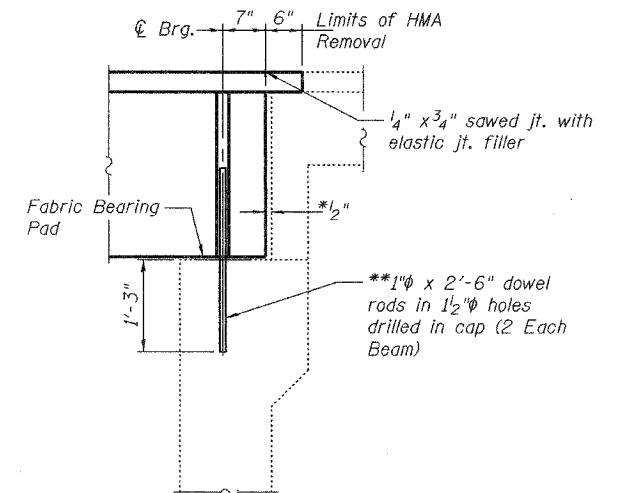
Note: Spacing of S(E) and S2(E) bars may be adjusted up to 4" in the immediate area of the transverse tie diaphragms to miss the block outs for the transverse ties.



PLAN VIEW



TYPICAL SOUTH ABUTMENT SECTION



TYPICAL NORTH ABUTMENT SECTION

MIN. BAR LAPS

#4 bar = 1'-8"
#5 bar = 2'-2"

BAR LIST
35" BEAM

(For information only)

Bar	No.	Size	Length	Shape
A(E)	16	#4	2'-6"	—
A1(E)	32	#4	2'-10"	—
B(E)	8	#5	29'-9"	—
B1(E)	6	#4	29'-6"	—
S(E)	72	#4	6'-4"	┌
S1(E)	8	#4	5'-10"	┌
S2(E)	64	#4	6'-1"	┌
S3(E)	10	#4	4'-10"	┌
S4(E)	10	#4	4'-9"	┌
U(E)	8	#5	4'-6"	┌
U1(E)	4	#4	6'-8"	┌

BAR LIST
36" BEAM

(For information only)

Bar	No.	Size	Length	Shape
A(E)	16	#4	2'-7"	—
A1(E)	32	#4	2'-11"	—
B(E)	8	#5	29'-9"	—
B1(E)	6	#4	29'-6"	—
S(E)	72	#4	6'-5"	┌
S1(E)	8	#4	5'-11"	┌
S2(E)	64	#4	6'-2"	┌
S3(E)	10	#4	4'-10"	┌
S4(E)	10	#4	4'-9"	┌
U(E)	8	#5	4'-6"	┌
U1(E)	4	#4	6'-10"	┌

See sheet 3 of 3 for additional details and Bill of Material.
Bars indicated thus 4x2-#5 etc. indicates 4 lines of bars with 2 lengths per line.

BEAM DETAILS
F.A. RT. 770
MOULTRIE COUNTY
SN 070-0036

DESIGNED	A.J.B.
CHECKED	V.H.V.
DRAWN	Drew Christopher
CHECKED	A.J.B. V.H.V.

May 9, 2008
EXAMINED *Carl Krusey*
ENGINEER OF STRUCTURAL SERVICES
PASSED *Ralph E. Anderson*
ENGINEER OF BRIDGES AND STRUCTURES