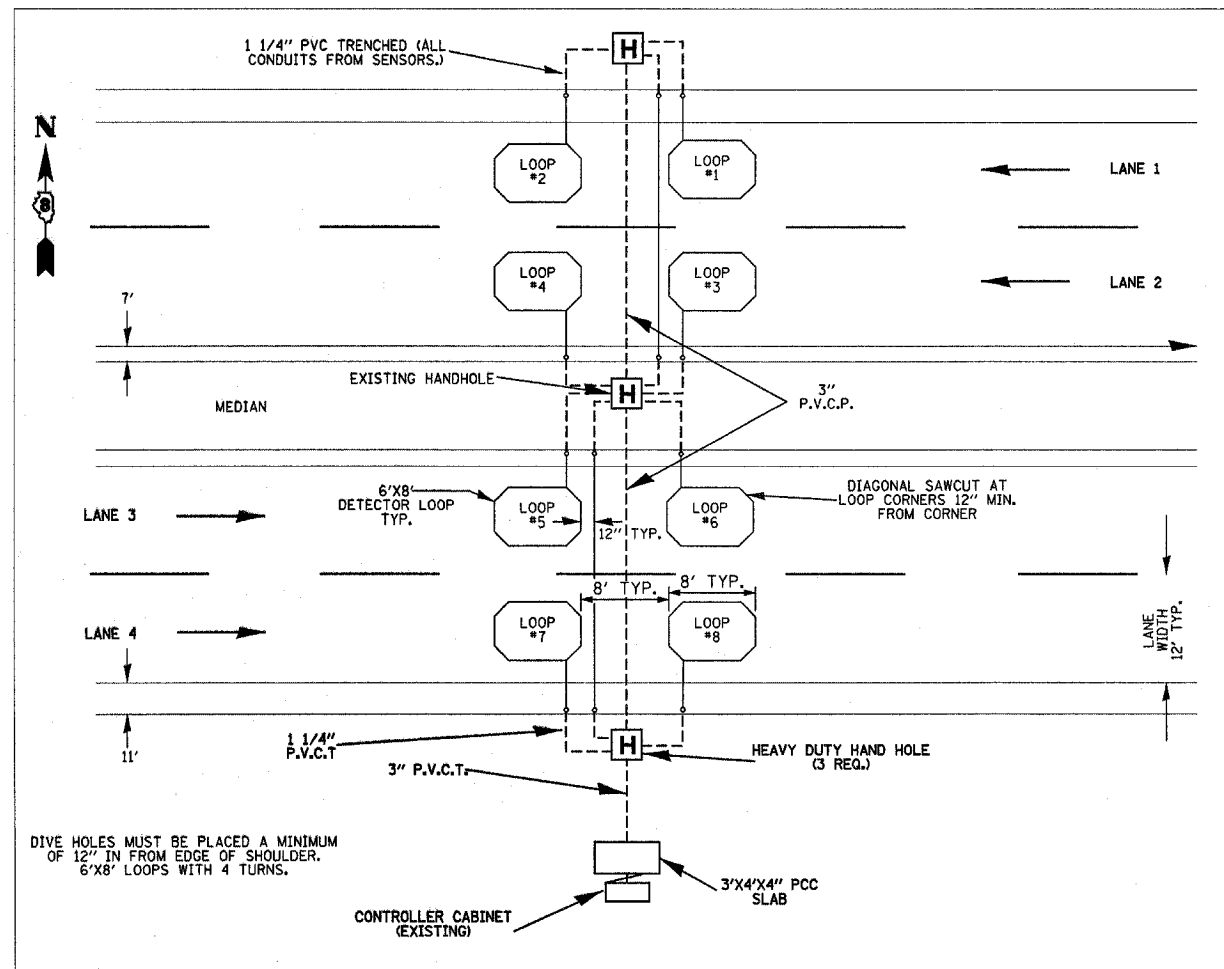


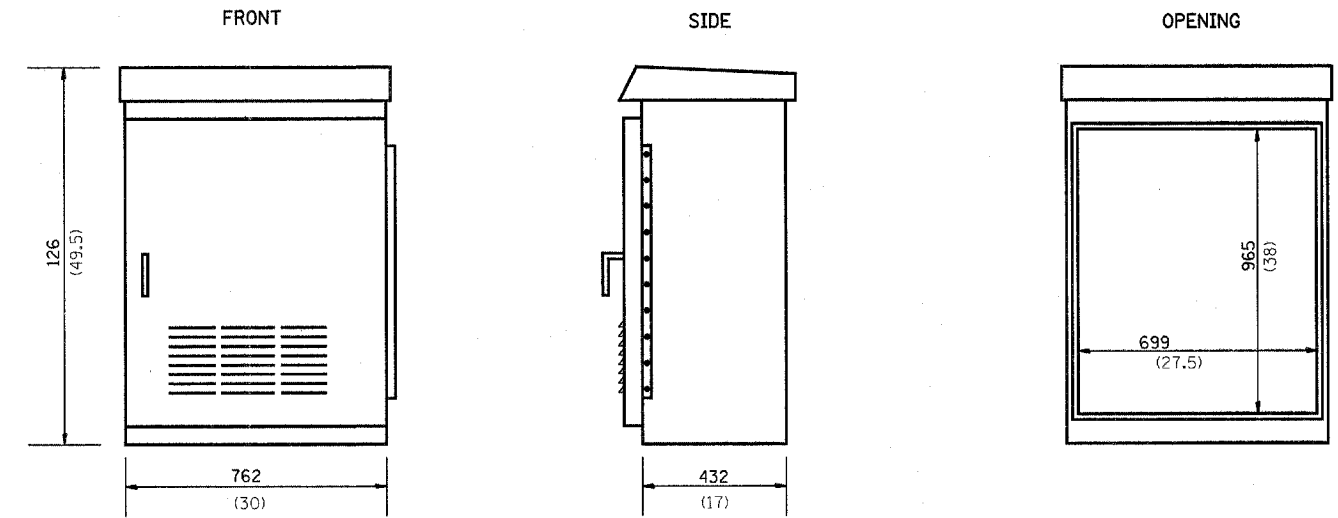
LAYOUT FOR ATR SITE #8070
I-270 E. OF CHAIN OF ROCKS BRIDGE



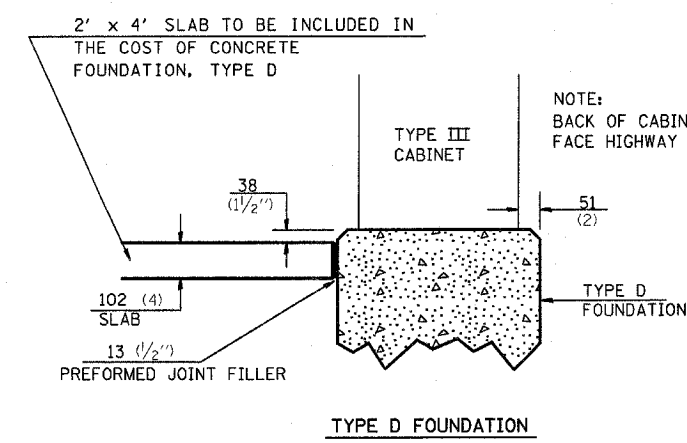
DIVE HOLES MUST BE PLACED A MINIMUM OF 12" IN FROM EDGE OF SHOULDER. 6'X8' LOOPS WITH 4 TURNS.

SCHEDULE OF QUANTITIES

CODE NO.	ITEM	UNIT	QUANTITY
81012044	CONDUIT IN TRENCH, 1 1/4" DIA., PVC	FOOT	155
81400200	HEAVY-DUTY HANDHOLE	EACH	3
879000200	DRILL EXISTING HANDHOLE	EACH	7
88600400	DETECTOR LOOP, SPECIAL	FOOT	296
	PIEZO ELECTRIC SENSOR CABLE IN PAVEMENT	FOOT	32
X0300780	PIEZO ELECTRIC SENSOR CABLE IN CONDUIT	FOOT	48
X0323014	ELECTRIC CABLE IN CONDUIT	FOOT	668
X0323015	PIEZO ELECTRIC AXLE SENSOR, CLASS II	FOOT	48
81021350	CONDUIT PUSHED, 3" DIA, PVC	FOOT	92
81012800	CONDUIT IN TRENCH, 3" DIA., PVC	FOOT	28



SINGLE DOOR CABINET



TYPE D FOUNDATION

TRAFFIC DATA COLLECTION CONTROL CABINET	
SOURCE: HENNESSY PRODUCTS INC. OR APPROVED EQUAL	
MODEL: HP 503017	
MATERIAL: ALUMINUM ALLOY - TYPE NO. 5052-H32	
NEMA TYPE: 3R-12-4-4X	
CABINET FINISH: NATURAL ALUMINUM	

FILE NAME = c:\projects\ed06207\plan\pkm06207.dgn	USER NAME = oifordb	DESIGNED -	REVISED -
		DRAWN -	REVISED -
	PLOT SCALE = 50.0000' / IN.	CHECKED -	REVISED -
	PLOT DATE = 4/23/2008	DATE -	REVISED -

STATE OF ILLINOIS
DEPARTMENT OF TRANSPORTATION

TRAFFIC COUNTER DETAILS

SCALE:	SHEET NO.	OF	SHEETS	STA.	TO STA.
--------	-----------	----	--------	------	---------

F.A.I. RTE. 270	SECTION 60-(1,2,3,4)RS-2	COUNTY MADISON	TOTAL SHEETS 193	SHEET NO. 159
CONTRACT NO. 76A90				
FED. ROAD DIST. NO. ILLINOIS FED. AID PROJECT				