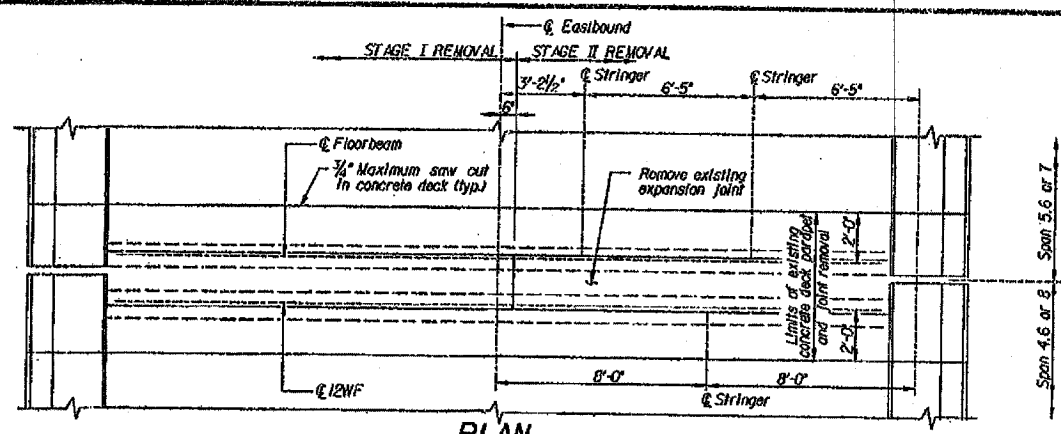


ROUTE No.	SECTION	COUNTY	TOTAL SHEETS	SHEET NO.
FAI-270		MADISON	448	193D
STA.		TO STA.		
F.I.M.A. REGION		BLANKS		PROJECT
#60-1B-1-3		SHT. 2B OF 37		

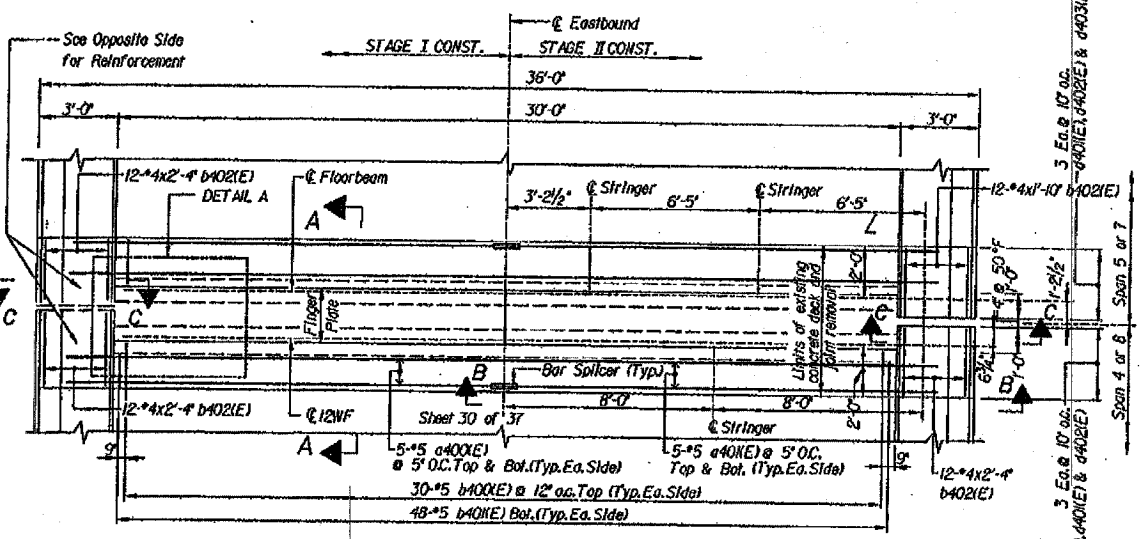
BILL OF MATERIAL

BAR	NO.	SIZE	LENGTH	SHAPE
d400(E)	40	#5	17'-0"	—
d401(E)	40	#5	17'-0"	—
d400(E)	120	#5	2'-5"	U
d401(E)	192	#5	2'-4"	—
d402(E)	96	#4	2'-4"	—
d400(E)	12	#5	3'-10"	U
d401(E)	24	#5	4'-8"	—
d402(E)	24	#5	3'-5"	—
d403(E)	12	#5	3'-8"	—
REINFORCEMENT BARS, EPOXY COATED			LBS	2640
CONCRETE SUPERSTRUCTURE			CU YDS	12.6
REINFORCED NEOPRENE EXPANSION JOINT TREATMENT			LIN. FT.	190
CONCRETE REMOVAL			CU YDS	11.2
FURNISH & ERECT STRUCTURAL STEEL			LBS	28,100
BAR SPLICERS			EACH	40

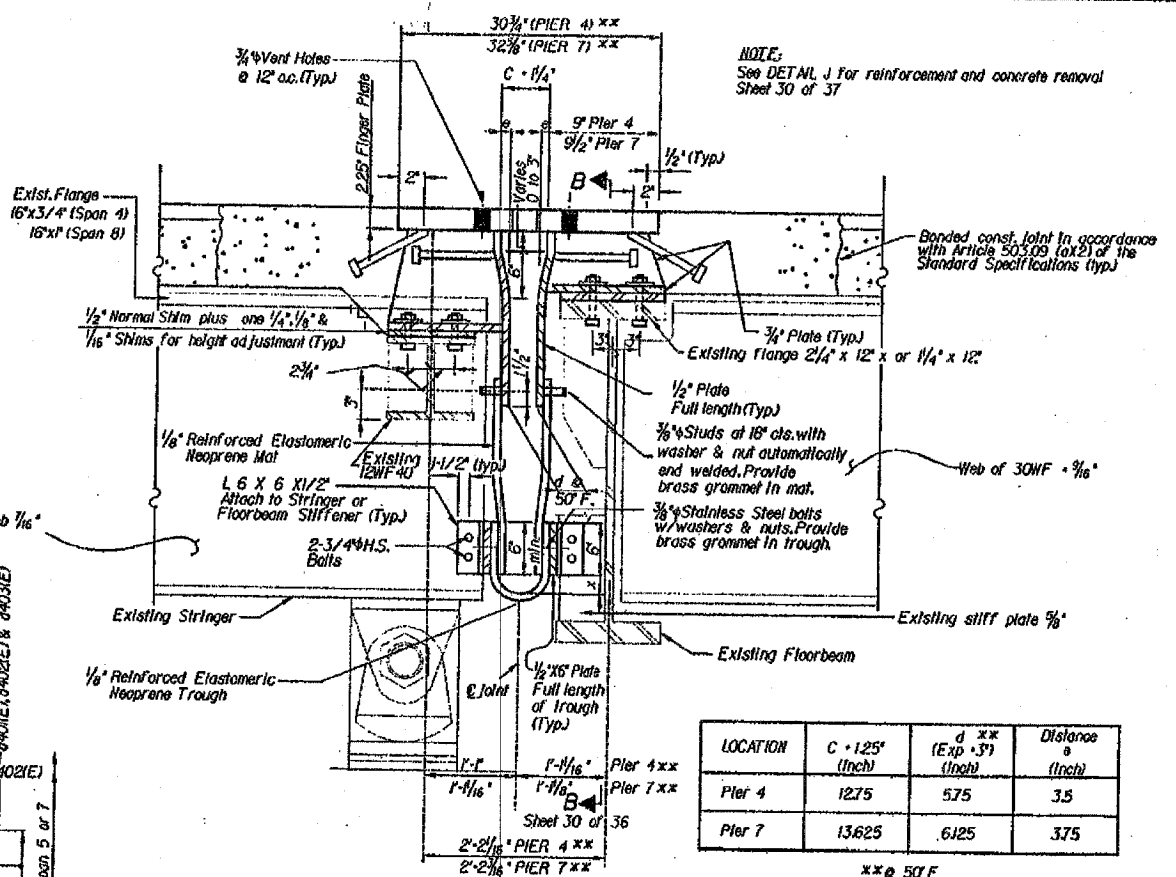
NOTE: Contractor shall verify existing dimensions in field and make necessary adjustments prior to construction or ordering materials.



PLAN
CONCRETE DECK, EXPANSION JOINT REMOVAL AT PIERS 1 & 7 AND PANEL L13



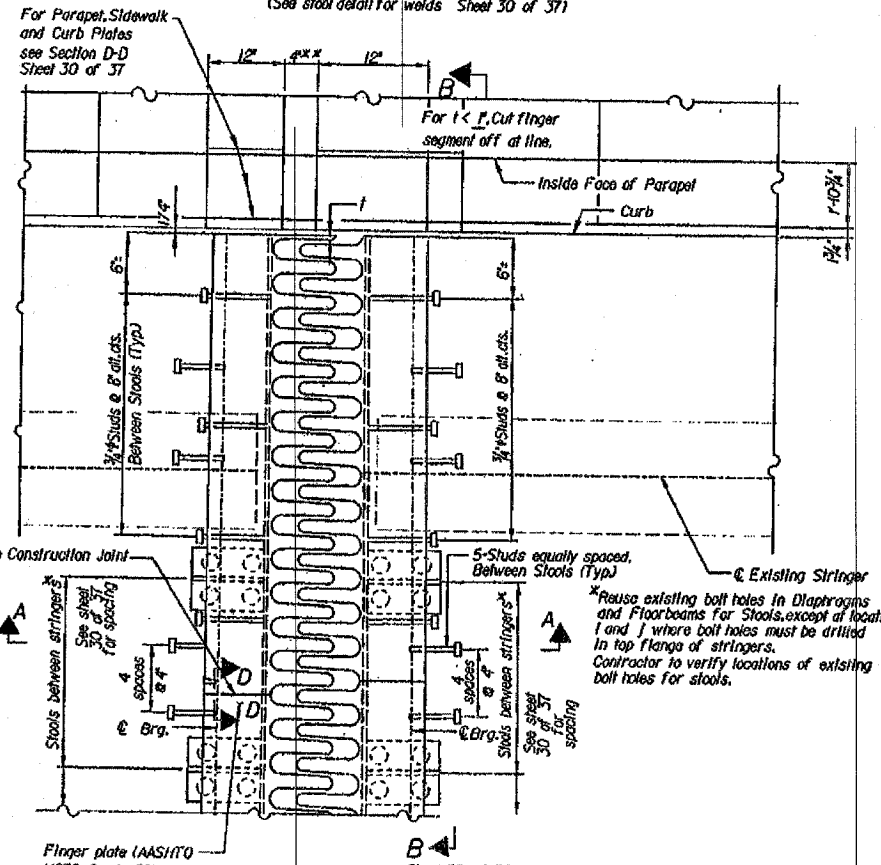
PLAN
DECK REINFORCEMENT AT PIERS 4 & 7



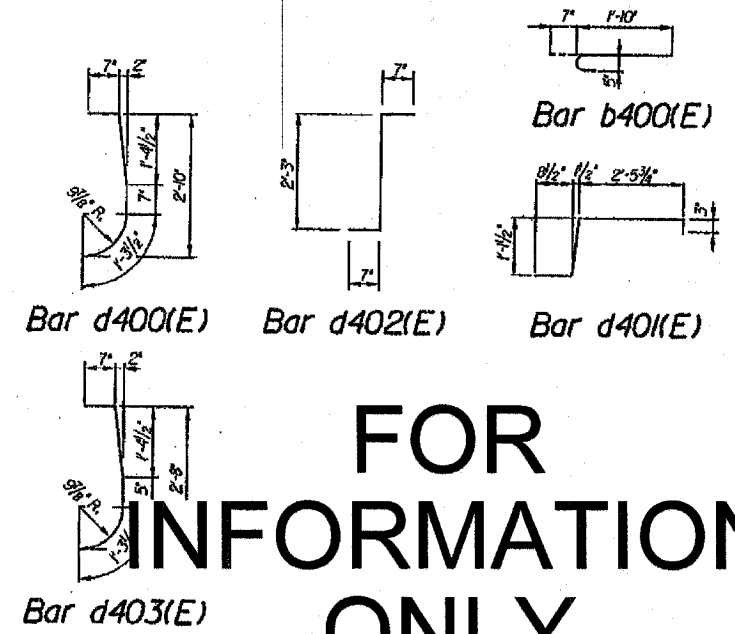
SECTION A-A
PIER 4 & 7 AS SHOWN
(See steel detail for welds Sheet 30 of 37)

LOCATION	C + 125' (Inch)	d ** (Exp. 3') (Inch)	Distance a (Inch)
Pier 4	1275	575	35
Pier 7	13625	6125	375

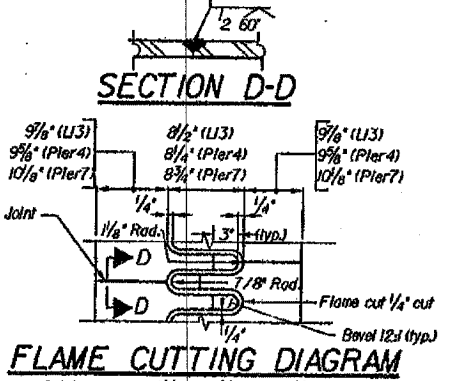
** @ 50' F
x - d - 2' @ 50' F



PLAN DETAIL A



FOR INFORMATION ONLY



FLAME CUTTING DIAGRAM
Cut from Plate 2 1/4" x 28 1/4" x 29'-11 1/2" (L13)
Cut from Plate 2 1/4" x 27 1/2" x 29'-11 1/2" (Pier 4)
Cut from Plate 2 1/4" x 29" x 29'-11 1/2" (Pier 7)

ILLINOIS DEPARTMENT OF TRANSPORTATION
FINGER PLATE EXPANSION DETAILS AT PIERS 4 AND 7
REHABILITATION OF CHAIN OF ROCKS CANAL BRIDGE
FAI-270 OVER THE CHAIN OF ROCKS CANAL
EASTBOUND BRIDGE REPAIR
SECTION 60-1B-1-3
MADISON COUNTY
STRUCTURE NUMBER 060-0036

DATE 1995

DESIGNED	JN
CHECKED	DM
DRAWN	CD
CHECKED	JN

alfred benesch & company
CONSULTING ENGINEERS
205 NORTH MICHIGAN AVENUE, CHICAGO, ILLINOIS 60601
JOB NO. 3011