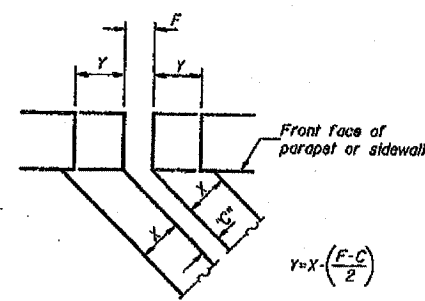
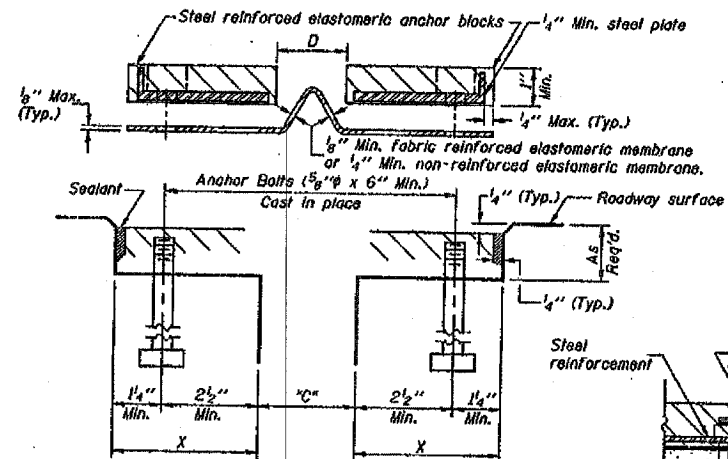


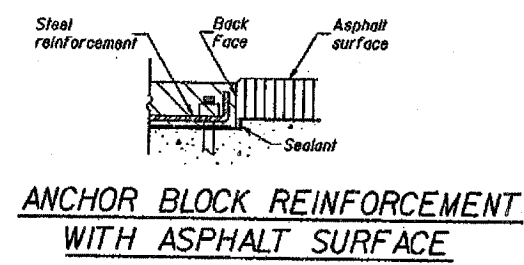
ROUTE No.	SECTION	COUNTY	TOTAL SHEETS	SHEET NO.
FAI-270		MADISON	448	193
STA.		TO STA.		
F.H.W.A. REGION		ILLINOIS	PROJECT	
60-1B-1-3		SHT. 28 OF 37		



FORMING BLOCKOUT SKETCH



CROSS SECTION



ANCHOR BLOCK REINFORCEMENT WITH ASPHALT SURFACE

GENERAL NOTES

Continuous Seal Neoprene Expansion Joint shall consist of molded anchor blocks of elastomer and steel, field assembled over continuous lengths of elastomeric membrane.
 The elastomeric membrane shall be premolded with a single or a double upward convolution that will have a "memory" to return to its molded position upon joint closure.
 The convolution length shall be such that the extended length will not be greater than the manufactured length when the joint is fully expanded in its design range and will not protrude above the anchor blocks when the joint is fully compressed.
 Joint openings shall be adjusted in accordance with Article 503.106 of the Standard Specifications when the deck is poured at an ambient temperature other than 50° F.
 The parapet and sidewalk flaps may be furnished factory vulcanized to the roadway membrane provided the centerline of the convolution is maintained and the process and method meet the approval of the Engineer.

Joint Size	C at 50°F	D at 50°F
4"	3"	2 1/2" Min.

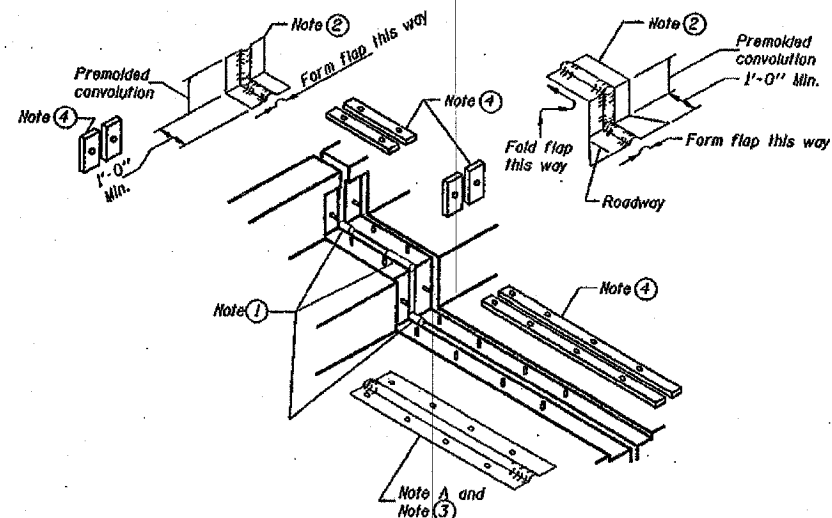
INSTALLATION NOTES

1. Install sponge mandrels into positions shown to form flap convolution.
2. Install parapet or sidewalk piece (trim roadway flap to fit before applying epoxy).
3. Install continuous seal in roadway.
4. Install anchor blocks as indicated.

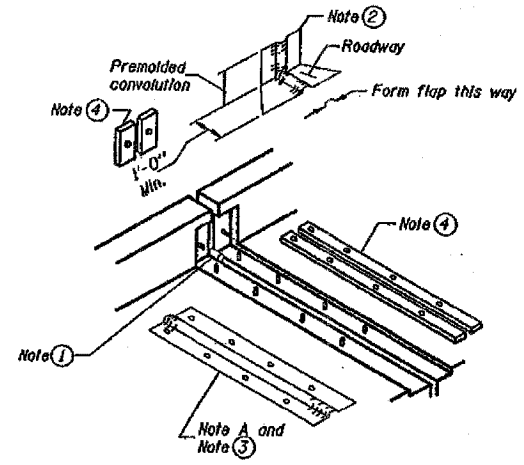
NOTE A: Maximum spacing of anchor bolts shall be 12" centers.

SKREW LIMITATIONS

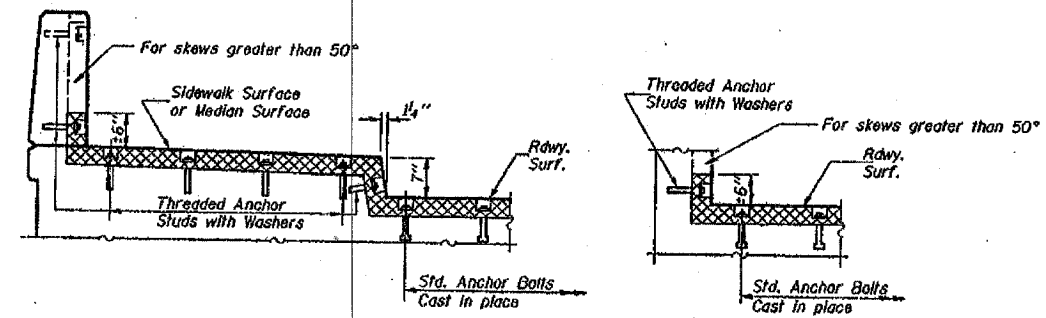
The details of the anchor blocks and the elastomeric membrane in the parapet, as shown, are for up to 50° skews. For skews greater than 50°, the anchor blocks and the elastomeric membrane, installed in accordance with dimension "D", might require modifications to insure a minimum clearance of 1/2" from centerline of anchor studs to edge of parapet opening. The anchor blocks and the elastomeric membrane shall also be installed to the top of the parapet with the anchor studs spaced at ±12" cts.



AT SIDEWALK OR MEDIAN



AT WALL



AT SIDEWALK OR MEDIAN TYPICAL END TREATMENTS

AT WALL

FOR INFORMATION ONLY

ILLINOIS DEPARTMENT OF TRANSPORTATION
 4" NEOPRENE EXPANSION JOINT
 REHABILITATION OF CHAIN OF ROCKS CANAL BRIDGE
 FAI-270 OVER THE CHAIN OF ROCKS CANAL
 EASTBOUND BRIDGE REPAIR
 SECTION 60-1B-1-3
 MADISON COUNTY
 STRUCTURE NUMBER 060-0036

DATE 1995

alfred benesch & company
 CONSULTING ENGINEERS
 205 NORTH MICHIGAN AVENUE, CHICAGO, ILLINOIS 60601
 JOB NO. 3011

DESIGNED	JN
CHECKED	DM
DRAWN	CD
CHECKED	JN