

INDEX OF SHEETS

SHEET NO.	DESCRIPTION
1	COVER, INDEX OF SHEETS, STANDARDS
2	GENERAL NOTES, HMA MIX DESIGN, SIGNATURES
3	SUMMARY OF QUANTITIES
4	044-0020 PLAN AND ELEVATION
5, 6	044-0020 BEAM DETAILS
7	044-0020 RAIL DETAILS
8	044-0020 CONCRETE BARRIER
9,	097-0022 PLAN AND ELEVATION
10, 11	097-0022 REPAIR DETAILS

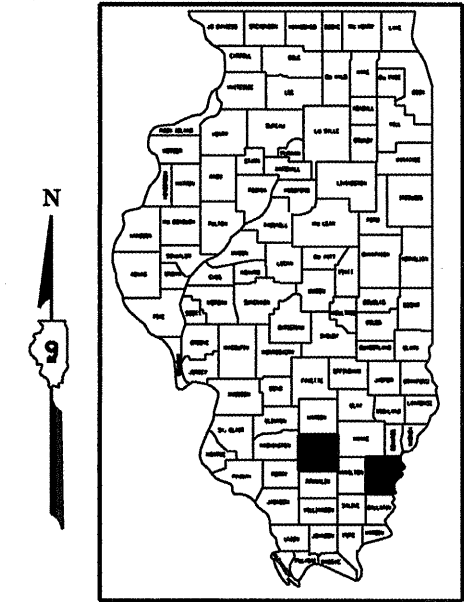
**STATE OF ILLINOIS
DEPARTMENT OF TRANSPORTATION
DIVISION OF HIGHWAYS**

**PROPOSED
HIGHWAY PLANS**

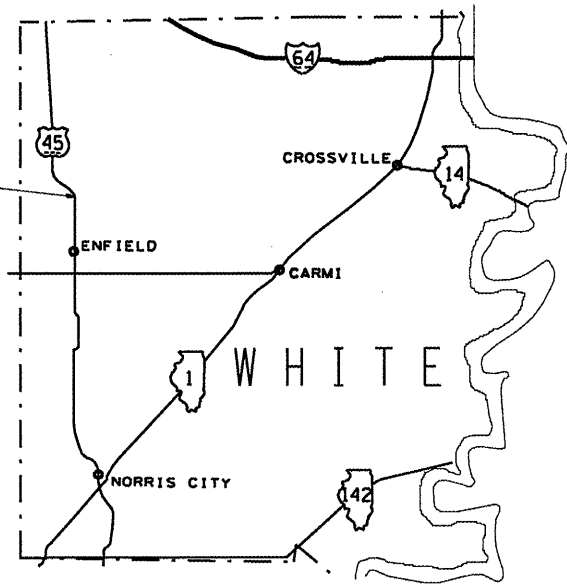
**FAP 885 (IL 146) & FAP 328 (US 45)
SECTION 11011-1, 1051-2
C-99-049-08
JOHNSON & WHITE COUNTIES**

ROUTE NO.	SECTION	COUNTY	TOTAL SHEETS	SHEET NO.
FAP 885 FAP 328	*	JOHNSON WHITE	11	1

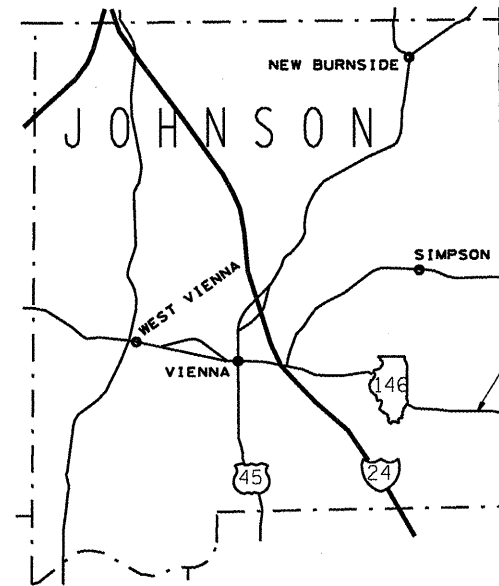
* 11011-1, 1051-2
CONTRACT NO. 78063



**PROPOSED IMPROVEMENT
S.N. 097-0022
BRACE BEAMS**



**PROPOSED IMPROVEMENT
S.N. 044-0020
REPLACE PPC DECK BEAM**



MAPS NOT TO SCALE

STANDARDS

- 701201-02 LANE CLOSURE, 2L, 2W, DAY ONLY
- 701321-09 LANE CLOSURE, 2L, 2W, BRIDGE REPAIR WITH BARRIER
- 701301-02 LANE CLOSURE, 2L, 2W, SHORT TIME OPERATIONS
- 701901 TRAFFIC CONTROL DEVICES
- 704001-04 TEMPORARY CONCRETE BARRIER

PLAN DRAWINGS ARE NOT TO SCALE.

J.U.L.I.E.
JOINT UTILITY LOCATION INFORMATION FOR EXCAVATION
1-800-892-0123

CONTRACT NO. 78063

**STRUCTURE 044-0020
ILLINOIS TOWNSHIP: GRANTSBURG
2007 ADT = 1350
TRUCKS = 10% ADT
POSTED SPEED = 55 MPH
INVENTORY RATING HS 27.6
OPERATING RATING HS 44.1**

**STRUCTURE 097-0022
ILLINOIS TOWNSHIP: MILL SHOALS
2007 ADT = 1900
TRUCKS = 21% ADT
POSTED SPEED = 55 MPH
INVENTORY RATING HS 12.9
OPERATING RATING HS 20.4**

STATE OF ILLINOIS
DEPARTMENT OF TRANSPORTATION
DIVISION OF HIGHWAYS

SUBMITTED March 24, 2008

Way C. James REGION 5 ENGINEER

May 9, 2008

Eric E. Harn ENGINEER OF DESIGN AND ENVIRONMENT

May 9, 2008

Christine M. Reed DIRECTOR, DIVISION OF HIGHWAYS

**PRINTED BY THE AUTHORITY
OF THE STATE OF ILLINOIS**

**STATE OF ILLINOIS
DEPARTMENT OF TRANSPORTATION**

ROUTE NO.	DISTRICT	COUNTY	TOTAL SHEETS	SHEET NO.
FAP 885	*	JOHNSON	11	2
FAP 328		WHITE		
FED. ROAD DIST. NO. 7		ILLINOIS	FED. AID PROJECT:	
* 11011-1, 1051-2				
CONTRACT NO. 78063				

GENERAL NOTES

THE THICKNESS OF HOT-MIX ASPHALT MIXTURE SHOWN ON THE PLANS IS THE NOMINAL THICKNESS.

ASBESTOS MAY BE PRESENT IN THE WATERPROOFING MEMBRANE. SEE SPECIAL PROVISION "ASBESTOS WATERPROOFING MEMBRANE AND ASBESTOS HOT-MIX ASPHALT SURFACE REMOVAL".

THE COST OF "NO RIGHT TURN" AND "NO LEFT TURN" SIGNS IS INCLUDED IN THE COST OF TRAFFIC CONTROL AND PROTECTION STANDARD 701321, AND WILL NOT BE PAID FOR SEPARATELY.

WHILE SIGNAL HEADS ARE MOUNTED IN PLACE, BUT NOT YET IN OPERATION, THEY SHALL BE SECURELY COVERED IN WHITE PLASTIC.

THE DIMENSIONS BETWEEN SIGNS MAY BE MODIFIED SLIGHTLY SO AS TO AVOID CONFLICTS WITH EXISTING SIDEROADS AND ENTRANCES. THE BUREAU OF OPERATIONS SHOULD APPROVE FINAL PLACEMENT OF TRAFFIC CONTROL SIGNING.

THE ADVANCE DETECTOR LOOPS ARE TYPICALLY LOCATED 275 FEET IN ADVANCE OF THE STOP BAR. THE BUREAU OF OPERATIONS SHOULD APPROVE THE LOOP LOCATIONS PRIOR TO INSTALLATION.

ANY TIME THE CONCRETE BARRIER IS NOT IN THE PROPER POSITION, FLAGGERS SHALL BE IN PLACE TO CONTROL TRAFFIC. THE TEMPORARY TRAFFIC SIGNALS SHALL BE SET TO FLASH ALL RED.

TEMPORARY CONCRETE BARRIER SHALL ONLY BE ANCHORED INTO THE WEARING SURFACE, AND NOT INTO THE PPC DECK BEAMS.

FACTORS USED FOR ESTIMATING PLAN QUANTITIES ARE AS FOLLOWS AND SHALL NOT BE USED FOR THE BASIS OF FINAL QUANTITIES:

ALL HOT-MIX ASPHALT 2.016 TONS/CU. YD.

ALL WASTE RESULTING FROM HOT-MIX ASPHALT SURFACE REMOVAL SHALL BE HANDLED AND DISPOSED OF ACCORDING TO SPECIAL PROVISION "ASBESTOS WATERPROOFING MEMBRANE AND ASBESTOS HOT-MIX ASPHALT SURFACE REMOVAL (BDE)".

**044-0020
BITUMINOUS MIX DESIGN**

LOCATION:	HOT-MIX ASPHALT SURFACE COURSE
MIXTURE USE(S):	HOT-MIX ASPHALT SURFACE COURSE, MIX C, N90
AC/PG:	PG64-22
RAP % (MAX):	10
DESIGN AIR VOIDS:	4.0%, 90 GYRATION DESIGN
MIXTURE COMPOSITION: (GRADATION MIXTURE)	IL - 9.5 mm OR IL 12.5 mm
FRICTION AGGREGATE:	C SURFACE

Prepared By: *Kevin Hammer*
DISTRICT OPERATIONS ENGINEER

Examined By: *John G.*
DISTRICT LAND ACQUISITION ENGINEER

Examined By: *Cassie Nelson*
DISTRICT PROGRAM DEVELOPMENT ENGINEER

Examined By: *Joe Zuber*
DISTRICT STUDIES & PLANS ENGINEER

Examined By: *Joseph L.*
DISTRICT CONSTRUCTION ENGINEER

Examined By: *Bruce W. Phelps*
DISTRICT MATERIALS ENGINEER

Examined By: *John Smith*
DISTRICT PROJECT IMPLEMENTATION ENGINEER

Examined By: *Sammy L. Taylor*
ASSISTANT REGIONAL ENGINEER

Approved By: *Max Orlandi*
DEPUTY DIRECTOR OF HIGHWAYS, REGION 5 ENGINEER

March 24 20 08
DATE

STATE OF ILLINOIS
DEPARTMENT OF TRANSPORTATION

ROUTE NO.	SECTION	COUNTY	TOTAL SHEETS	SHEET NO.
FAP 885 FAP 328	*	JOHNSON WHITE	11	3
FED. ROAD DIST. NO. 7	ALPHABETIC	FED. AID PROJECT		

* 11011-1, 1051-2
CONTRACT NO. 78063

SUMMARY OF QUANTITIES

CODE NO.	SFTY-2A ITEM DESCRIPTION	RURAL UNIT	100% STATE - SFTY-2A		
			QUANTITY		
			TOTAL	JOHNSON	WHITE
40603320	HOT-MIX ASPHALT SURFACE COURSE, MIX "C", N90	TON	3	3	
44001005	HOT-MIX ASPHALT SURFACE REMOVAL	SQ YD	4	4	
50400505	PRECAST PRESTRESSED CONCRETE DECK BEAMS (27" DEPTH)	SQ FT	182	182	
50500405	FURNISHING AND ERECTING STRUCTURAL STEEL	POUND	35,450		35,450
50900905	REMOVING AND RE-ERECTING EXISTING RAILING	FOOT	61	61	
58100200	WATERPROOFING MEMBRANE SYSTEM	SQ YD	24	24	
58300100	PORTLAND CEMENT MORTAR FAIRING COURSE	FOOT	61	61	
67000400	ENGINEER'S FIELD OFFICE, TYPE A	CAL MO	4	1	3
67100100	MOBILIZATION	L SUM	1	0.5	0.5
70100405	TRAFFIC CONTROL AND PROTECTION, STANDARD 701321	EACH	1	1	
70100450	TRAFFIC CONTROL AND PROTECTION, STANDARD 701201	L SUM	1	1	
70106500	TEMPORARY BRIDGE TRAFFIC SIGNALS	EACH	1	1	
70106800	CHANGEABLE MESSAGE SIGN	CAL MO	2	2	
70400100	TEMPORARY CONCRETE BARRIER	FOOT	230	230	
* 78001110	PAINT PAVEMENT MARKING - LINE 4"	FOOT	62	62	
X0320047	REMOVAL OF EXISTING PRECAST PRESTRESSED CONCRETE DECK BEAMS	SQ FT	182	182	
X0320887	POLYMER CONCRETE	CU FT	0.3	0.3	
X0322932	SILICONE JOINT SEALER, 1.5"	FOOT	3	3	
Z0030250	IMPACT ATTENUATORS, TEMPORARY (NON-REDIRECTIVE). TEST LEVEL 3	EACH	2	2	
Z0001900	ASBESTOS BEARING PAD REMOVAL	EACH	1	1	

*SPECIALTY ITEMS

Rev.

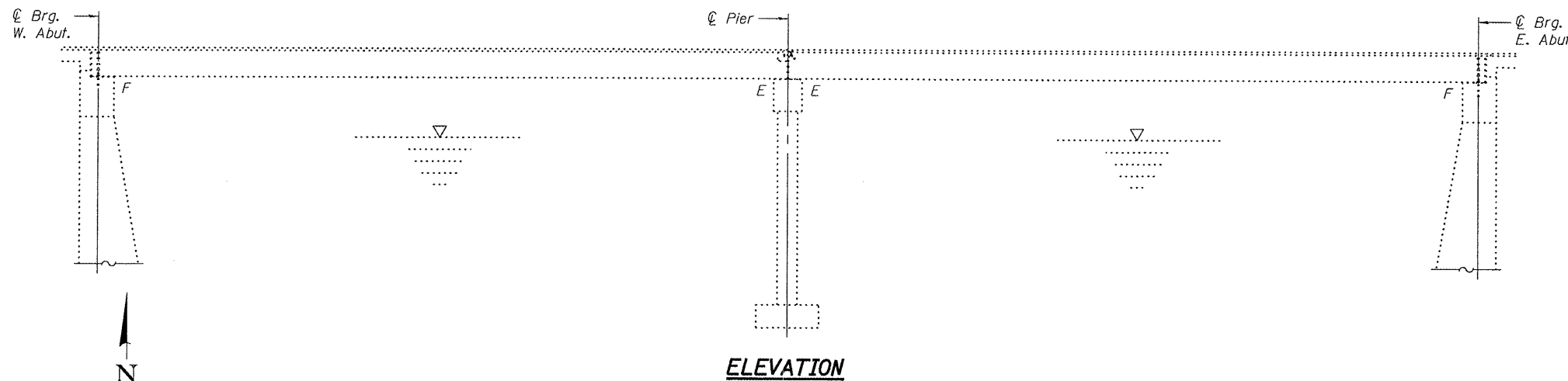
STATE OF ILLINOIS
DEPARTMENT OF TRANSPORTATION

ROUTE NO.	SECTION	COUNTY	LIST SHEETS	SHEET NO.
FAP 885	-	Johnson	11	4
FED. ROAD DIST. NO. 7	ILLINOIS	FED. AID PROJECT		

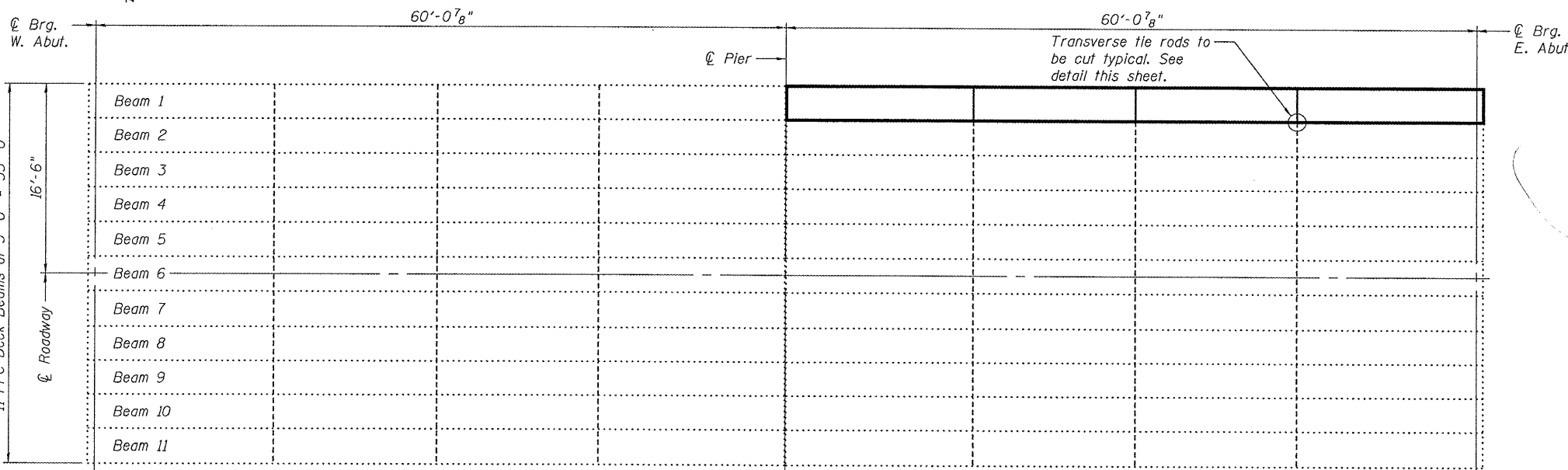
SHEET NO. 1

4 SHEETS

Contract Number: 78063



ELEVATION



PLAN

GENERAL NOTES

The contractor is advised that the existing PPC Deck Beams are in a deteriorated condition with reduced load carrying capacity. It is the contractor's responsibility to account for the condition of the beams when developing construction procedures.

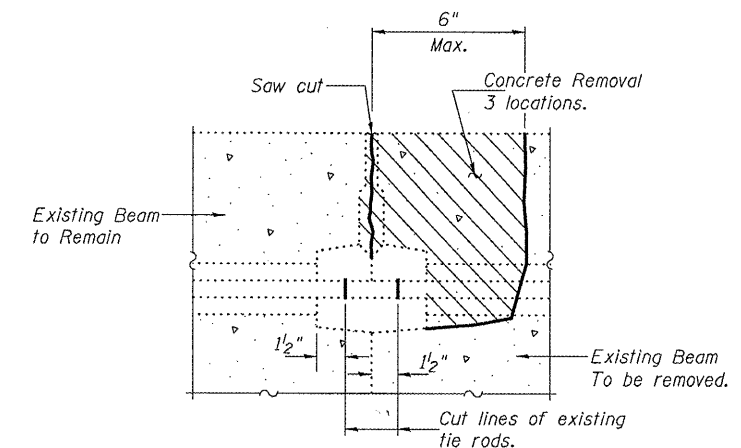
If the contractor's procedure for existing beam removal or placement of new beams involves placement of cranes or other heavy equipment on the bridge, a detailed procedure shall be submitted to the Engineer for approval. The procedure shall include calculations, prepared and sealed by an Illinois Licensed Structural Engineer, verifying that the equipment and procedure used will not overstress the new or existing beams. To distribute load to multiple beams and protect the existing surface, in all cases a double layer mat of heavy timbers shall be used at all times under crane tracks or wheels and any outriggers in the down position. If necessary, shims shall be used under the crane mat to ensure uniform contact with the underlying beams. If heavy equipment will be placed on new PPC deck beams, the following shall be done prior to placement of the timber mats: placement and tightening of transverse tie assemblies, grouting and curing the dowel rods 24 hours minimum and grouting and curing the shear keys.

Any damage done to the bridge during beam removal shall be repaired by the Contractor. Cost to be included in the cost of Removal of Existing PPC Deck Beams.

The top surface of the beams shall be finished according to the IDOT Manual for Fabrication of Precast Prestressed Concrete Products.

Plan dimensions and details relative to existing plans are subject to routine variations. The Contractor shall field verify existing dimensions and details affecting new construction and make necessary approved adjustments prior to construction or ordering of materials. Such variations shall not be cause for additional compensation for a change in scope of the work, however, the Contractor will be paid for the quantity actually furnished based upon the unit price bid for the work.

Concrete barriers are to be anchored into overlay and not into existing PPC Deck Beams.



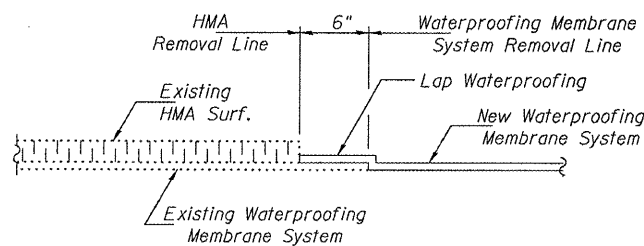
**BEAM REMOVAL DETAIL
AT TRANSVERSE TIES**

**DESIGN STRESSES
PRECAST UNITS**

$f'_c = 6,000$ psi
 $f'_{ci} = 5,000$ psi
 $f'_s = 270,000$ psi ($1/2$ " ϕ low lax strands)
 $f'_{si} = 201,960$ psi ($1/2$ " ϕ low lax strands)

TOTAL BILL OF MATERIAL

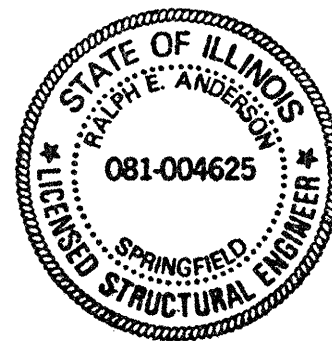
ITEM	UNIT	QUANTITY
HMA Surface Removal	Sq. Yd.	3.6
HMA Surface Course Mix C, N90	Tons	3.0
Removal of Existing PPC Deck Beams	Sq. Ft.	181.8
PPC Deck Beams (27" Depth)	Sq. Ft.	181.8
Waterproofing Membrane System	Sq. Yd.	23.8
PC Mortar Fairing Course	Foot	61
Removing and Re-Erecting Existing Railing	Foot	61
Polymer Concrete	Cu. Ft.	0.3
Silicone Joint Sealer, 1 1/2"	Foot	3
Asbestos Bearing Pad Removal	Each	1



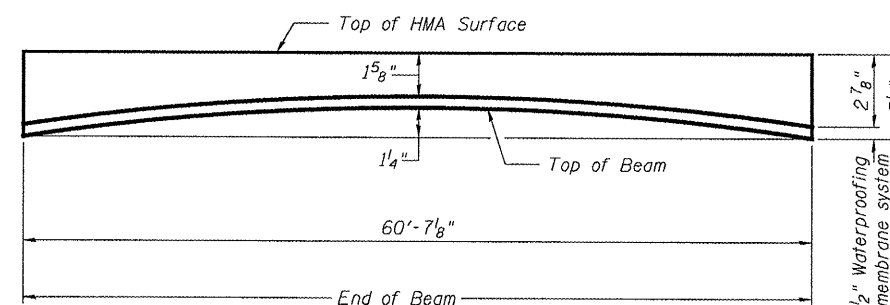
WATERPROOFING TREATMENT

DESIGNED	<i>[Signature]</i>
CHECKED	<i>[Signature]</i>
DRAWN	Drew Christopher
CHECKED	AJB VHK

MAY 8, 2008
EXAMINED *[Signature]*
PASSED *[Signature]*
ENGINEER OF BRIDGES AND STRUCTURES



Expires: November 30, 2008

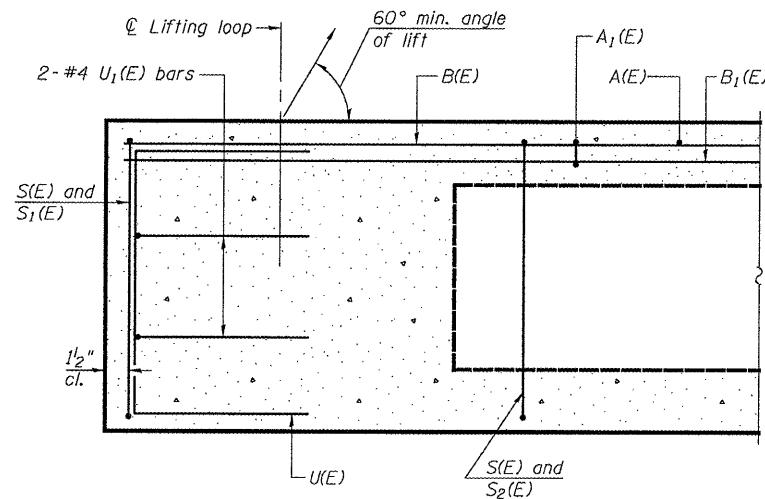


ANTICIPATED INITIAL CAMBER DIAGRAM

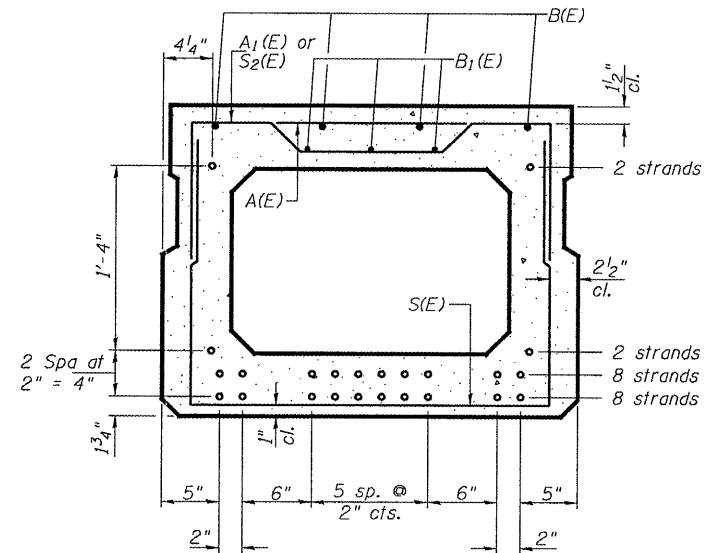
**PLAN AND ELEVATION
FAP 885
JOHNSON COUNTY
SN 044-0020**

STATE OF ILLINOIS
DEPARTMENT OF TRANSPORTATION

ROUTE NO.	SECTION	COUNTY	SHEET NO.	SHEET	SHEET NO. 2 4 SHEETS
FAP 885		Johnson	11	5	
FED. ROAD DIST. NO. 7	ILLINOIS	FED. AID PROJECT-	Contract Number: 78063		

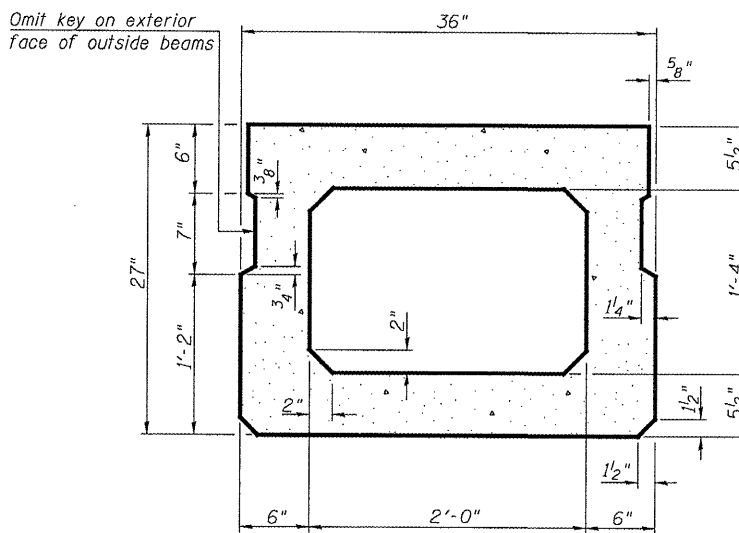


SECTION C-C



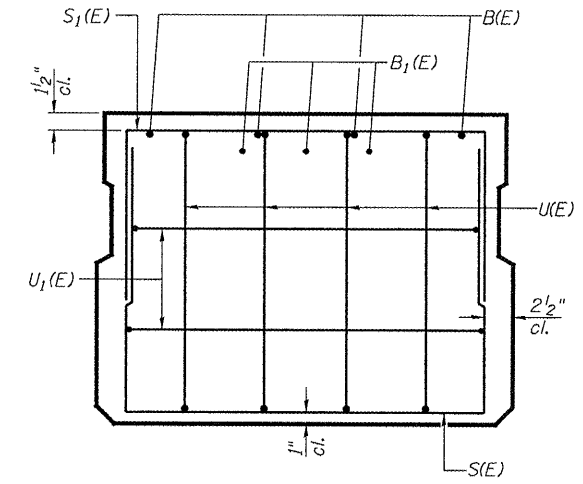
SECTION A-A

(Showing reinforcement and permissible strand locations)
Note: Place the number of strands specified in each row symmetrically about the centerline of beam in the permissible strand locations shown.



SECTION A-A

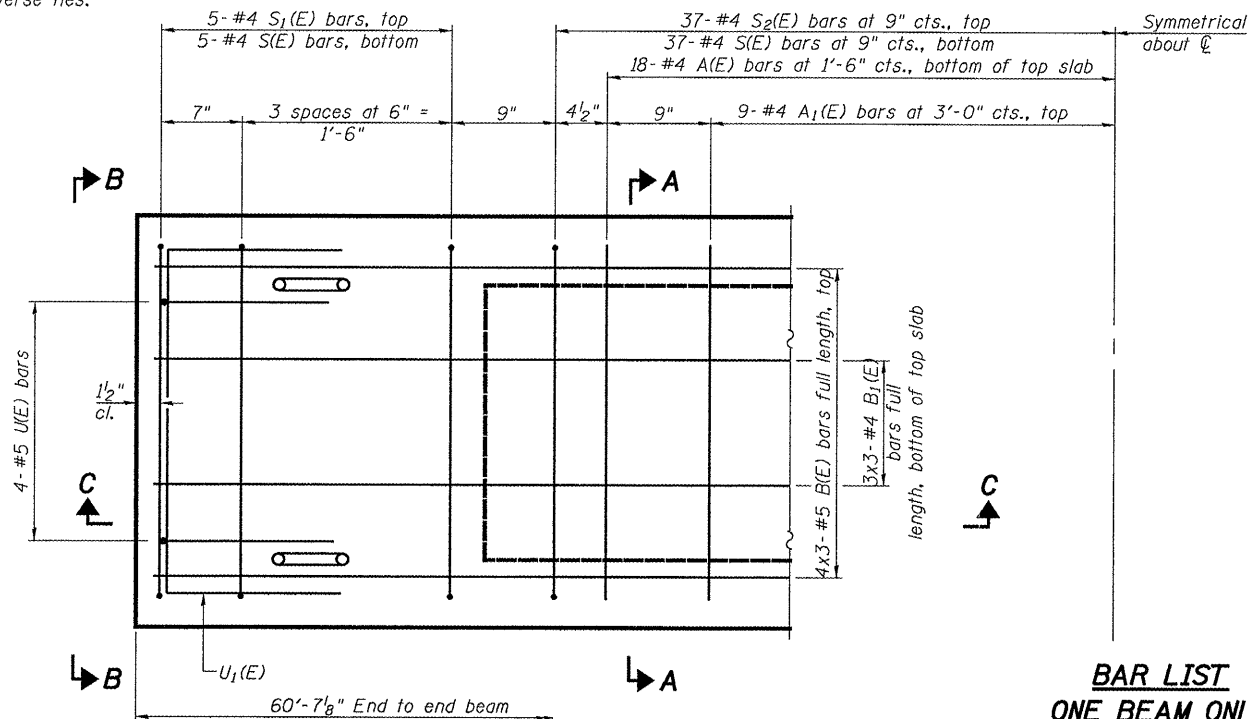
(Showing dimensions)



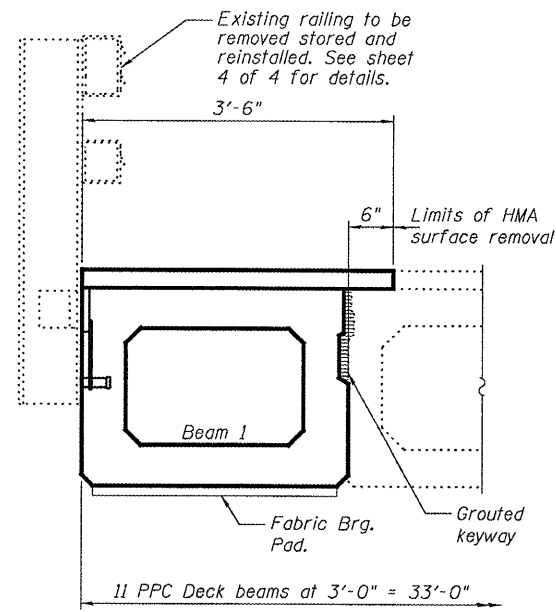
VIEW B-B

*1" joint shall be filled with non-shrink grout. Dimension may vary to accommodate tolerance in beam length.

Note: Spacing of S(E) and S2(E) bars may be adjusted up to 4" in the immediate area of the transverse tie diaphragms to miss the block outs for the transverse ties.



PLAN VIEW



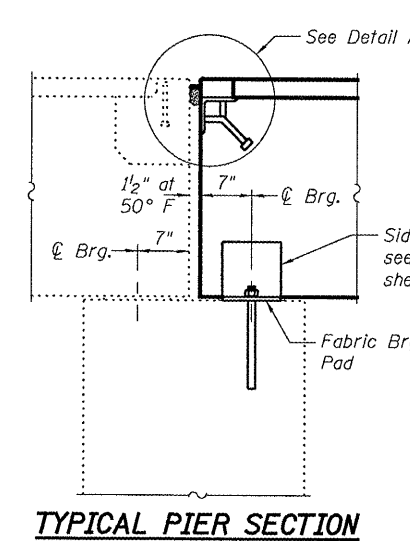
PARTIAL DECK CROSS SECTION

BAR LIST
ONE BEAM ONLY
(For information only)

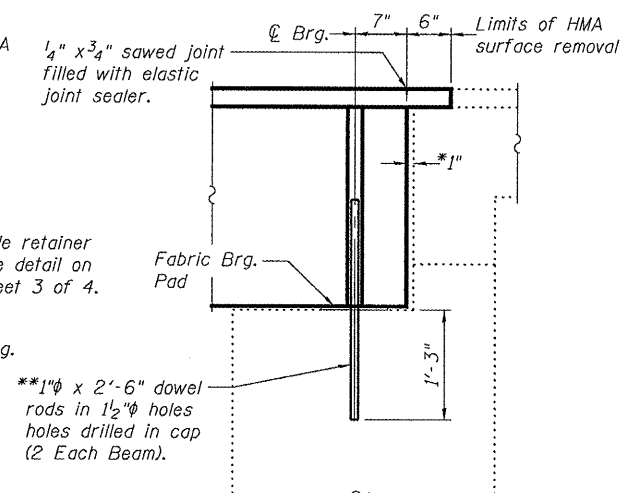
Bar	No.	Size	Length	Shape
A(E)	18	#4	2'-7"	—
A1(E)	36	#4	2'-10"	—
B(E)	12	#5	21'-7"	—
B1(E)	9	#4	21'-3"	—
S(E)	84	#4	6'-5"	—
S1(E)	10	#4	6'-3"	—
S2(E)	74	#4	6'-6"	—
U(E)	8	#5	4'-6"	—
U1(E)	4	#4	5'-0"	—

Notes:
See sheet 3 of 4 for additional details and Bill of Material.
Bars indicated thus 4 x 3-#5 etc. indicates 4 lines of bars with 3 lengths per line.

Min. Bar Lap
#4 = 1'-8"
#5 = 2'-2"

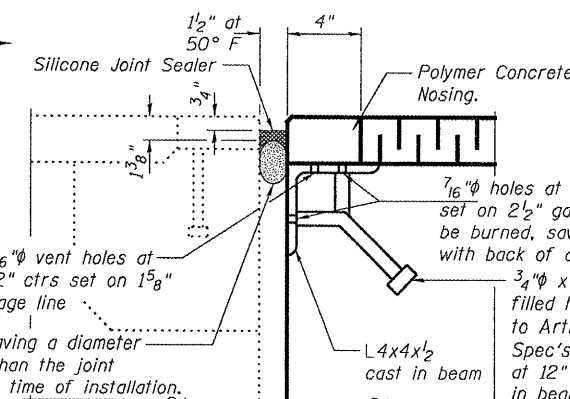


TYPICAL PIER SECTION



TYPICAL ABUTMENT SECTION

**Existing dowel rods are to be burned off, ground flush, and sealed with epoxy prior to placement of new beams. Cost included in Removal of Existing PPC Deck Beams. After beams have been erected holes shall be drilled into cap and dowel rods placed. Dowel holes shall be filled with non-shrink grout to top of beam and allowed to cure a minimum of 24 hours prior to grouting the shear keys.



DETAIL A

(Cost included with PPC Deck Beams, except as noted)

DESIGNED	A.J.B.
CHECKED	V.H.V.
DRAWN	Drew Christopher
CHECKED	A.J.B. V.H.V.

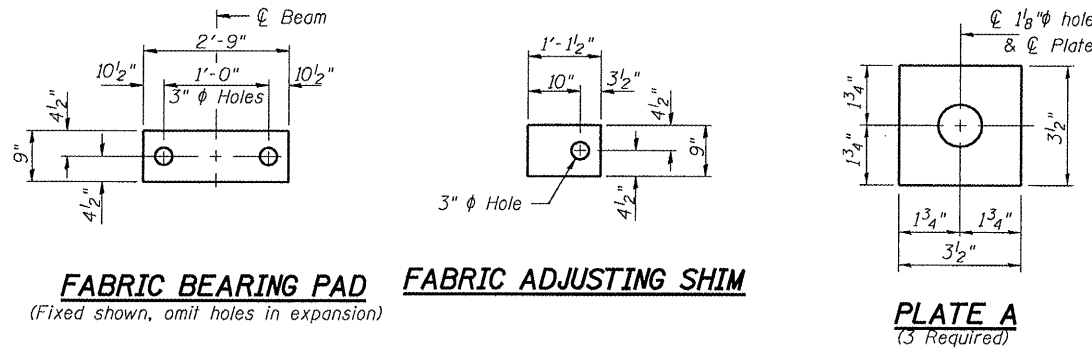
EXAMINED	MAY 8, 2008
PASSED	ENGINEER OF STRUCTURAL SERVICES
	ENGINEER OF BRIDGES AND STRUCTURES

BEAM DETAILS
FAP 885
JOHNSON COUNTY
SN 044-0020

STATE OF ILLINOIS
DEPARTMENT OF TRANSPORTATION

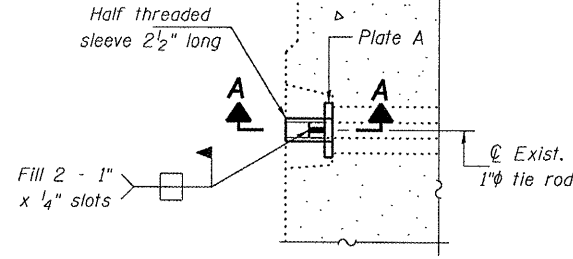
ROUTE NO.	SECTION	COUNTY	TOTAL SHEETS	SHEET NO.	SHEET NO. 3 4 SHEETS
FAP 885	-	Johnson	11	6	
FED. ROAD DIST. NO. 7		ILLINOIS		FED. AID PROJECT	

Contract Number: 78063



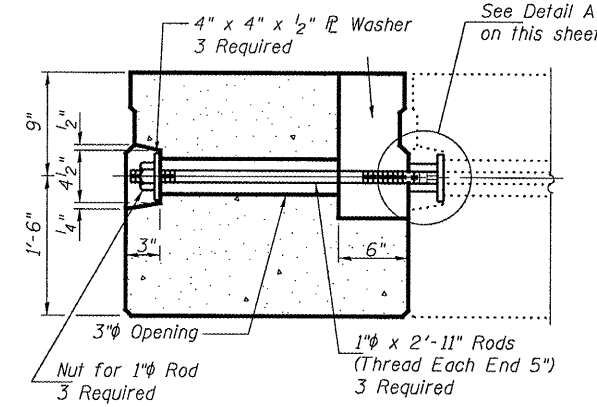
FABRIC BEARING PAD (Fixed shown, omit holes in expansion)
FABRIC ADJUSTING SHIM

PLATE A
(3 Required)

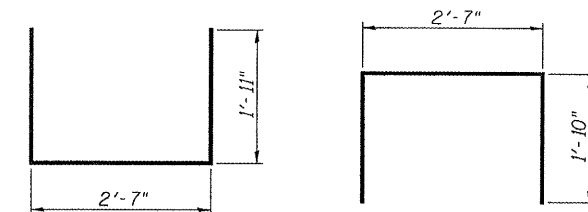


DETAIL A

6" x 6" x 1 1/2" Blockout to be filled with Class BS Concrete after Beams have been installed. Cost shall be included in the cost of "PPC Deck Beams". Omit on outside face of fascia beam.

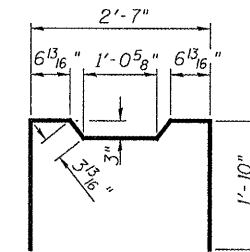


TYPICAL TRANSVERSE TIE ASSEMBLY



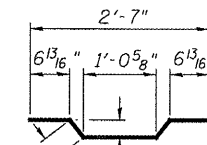
BAR S(E)

BAR S1(E)

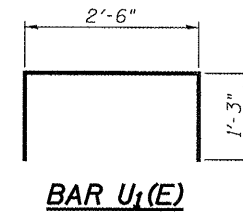


BAR S2(E)

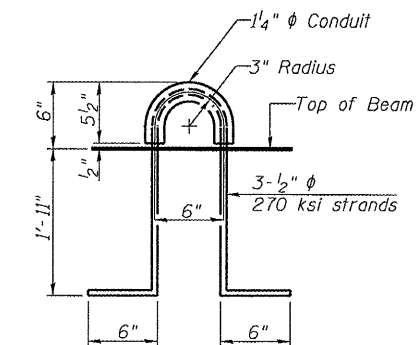
BAR U(E)



BAR A1(E)



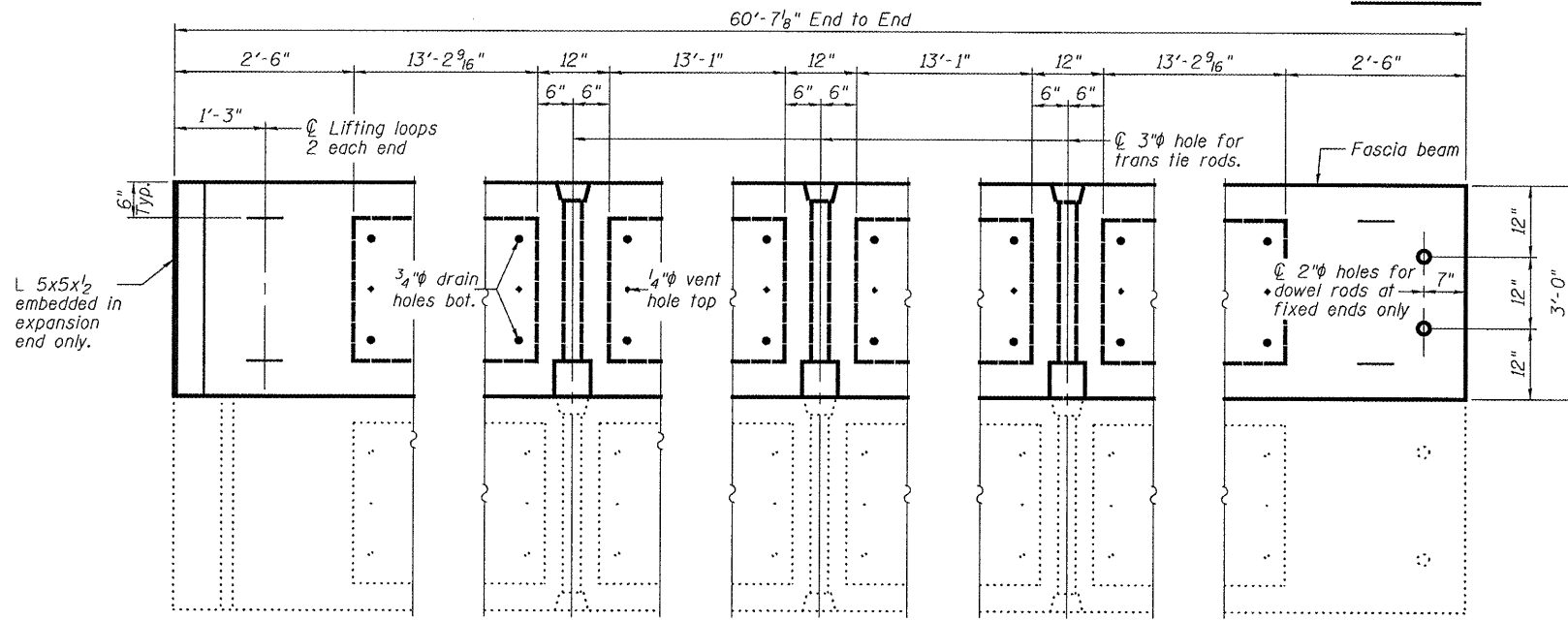
BAR U1(E)



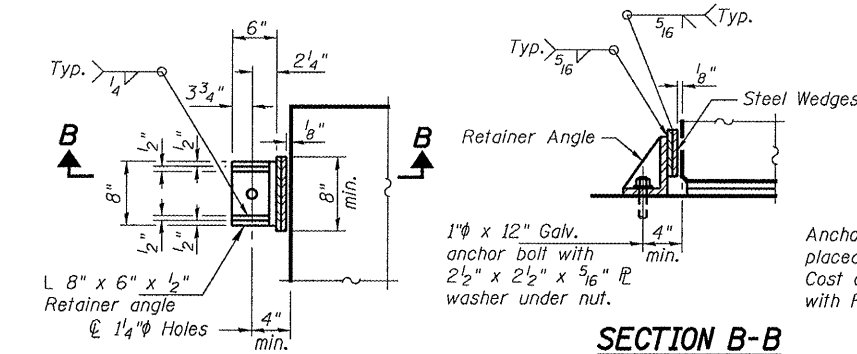
LIFTING LOOP DETAIL

BILL OF MATERIAL

Precast Prestressed Conc. Deck Bms. (27" depth)	Sq. Ft.	181.8
---	---------	-------



PLAN VIEW



SECTION B-B

RETAINER AT BEAM 1, BRG AT PIER 1
(Outside Face only)

DESIGNED	A.J.B.
CHECKED	V.H.V.
DRAWN	Drew Christopher
CHECKED	A.J.B. V.H.V.

MAY 8, 2008
EXAMINED <i>Carl Hines</i> ENGINEER OF STRUCTURAL SERVICES
PASSED <i>Ralph E. Anderson</i> ENGINEER OF BRIDGES AND STRUCTURES

NOTES

- Prestressing steel shall be uncoated high strength, low relaxation 7-wire strand, Grade 270. The nominal diameter shall be 1/2" and the nominal cross-sectional area shall be 0.153 sq. in. The 1" rods in the transverse tie assembly shall be tightened to a snug fit and the threads set. Pockets on exterior faces of bridge shall be filled with grout after transverse tie assembly is in place.
- Reinforcement bars shall conform to ASTM A 706 (IL MOD), Grade 60. (See Special Provisions)
- Two 1/8" fabric adjusting shims of the dimensions shown shall be provided for each bearing pad location. A minimum 2 1/2" lifting pin shall be used to engage the lifting loops during handling.
- Corrosion Inhibitor, per Article 1020.05(b)(12) and 1021.06 of the Standard Specifications, shall be used in the concrete for precast prestressed concrete deck beams.
- Compressive strength of prestressed concrete, f'c, shall be 6000 psi.
- Compressive strength of prestressed concrete at release, f'ci, shall be 5000 psi.

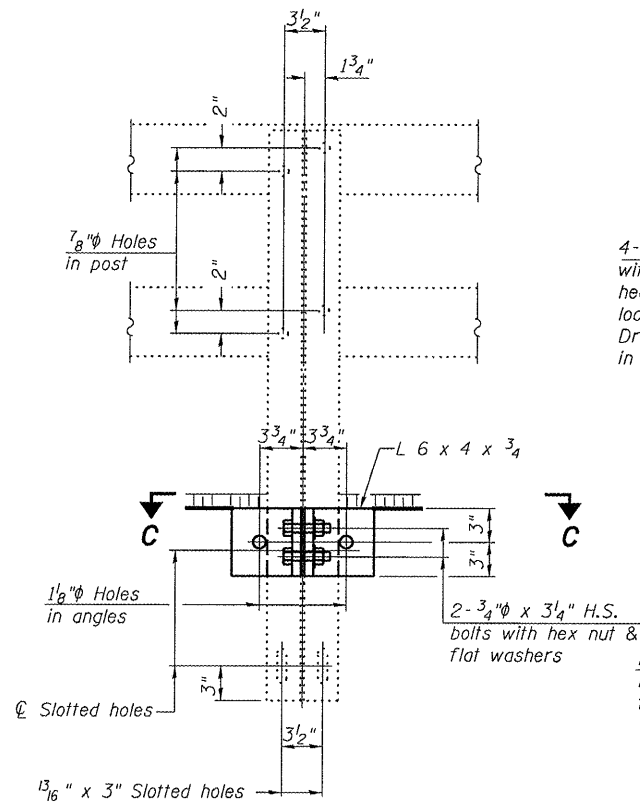
BEAM DETAILS
F.A. RT. 51
JOHNSON COUNTY
SN 044-0020

STATE OF ILLINOIS
DEPARTMENT OF TRANSPORTATION

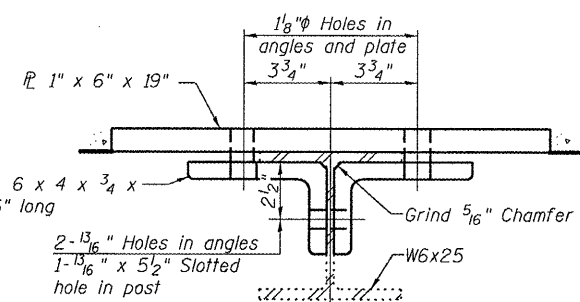
ROUTE NO.	SECTION	COUNTY	TOTAL SHEETS	SHEET NO.
FAP 885		Johnson	11	7
FED. ROAD DIST. NO. 7	ILLINOIS	FED. AID PROJECT		

SHEET NO. 4
4 SHEETS

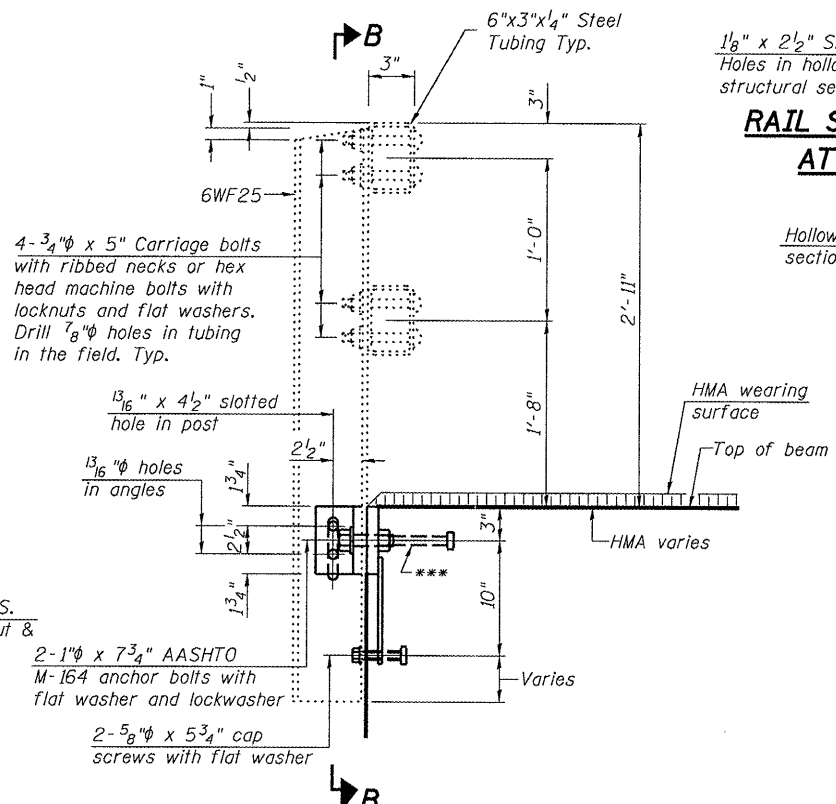
Contract Number: 78063



SECTION B-B

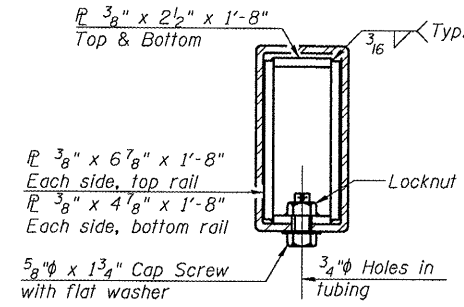
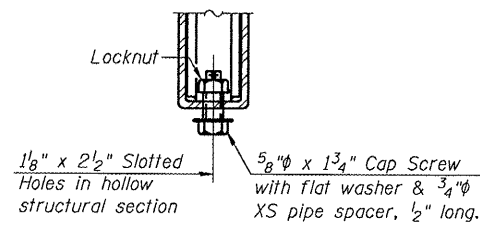


SECTION C-C

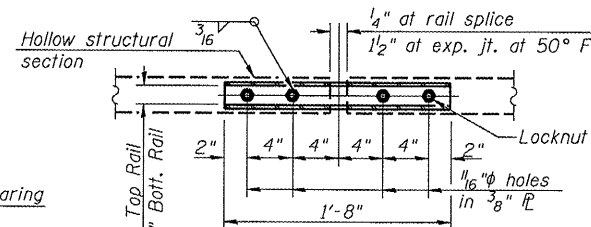


SECTION AT RAIL POST

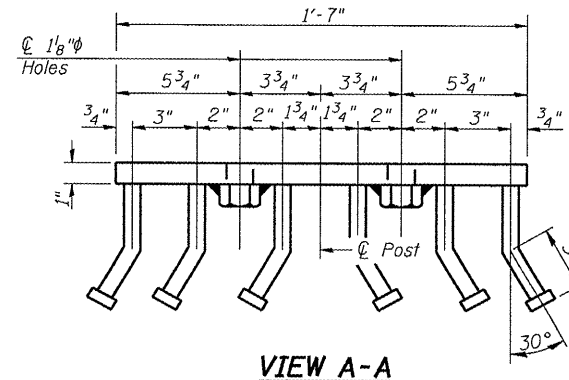
RAIL SPLICE CONNECTION
AT EXPANSION JT.



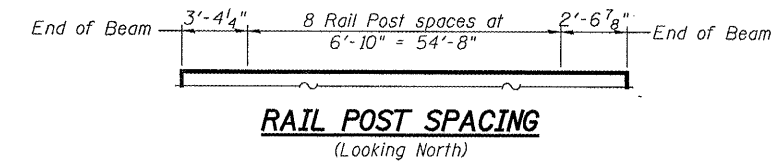
SECTION AT RAIL SPLICE



PLAN-BOTT. SPLICE P
TYPICAL

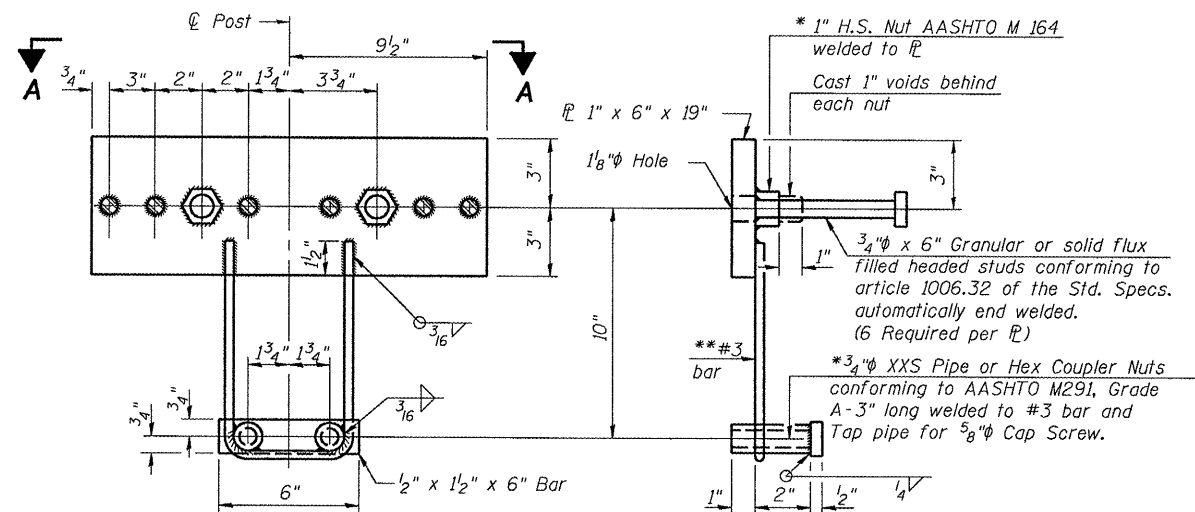


VIEW A-A



RAIL POST SPACING
(Looking North)

Notes:
All field drilled holes shall be coated with an approved zinc rich paint before erection.
Cost included with Steel Railing, Type WT.
All steel rail members shall be galvanized according to Article 509.05 of the Standard Specifications.
*** The studs of the anchor devices shall be placed below the top reinforcement bars and the outermost longitudinal reinforcement bar shall be placed directly above the studs of the rail post anchor device.



ANCHOR DEVICE

*Threaded areas shall be plugged or blocked off during casting of beam. Galvanized after fabrication.

BILL OF MATERIAL

Item	Unit	Quantity
Removing and Re-erecting Existing Railing	Foot	61

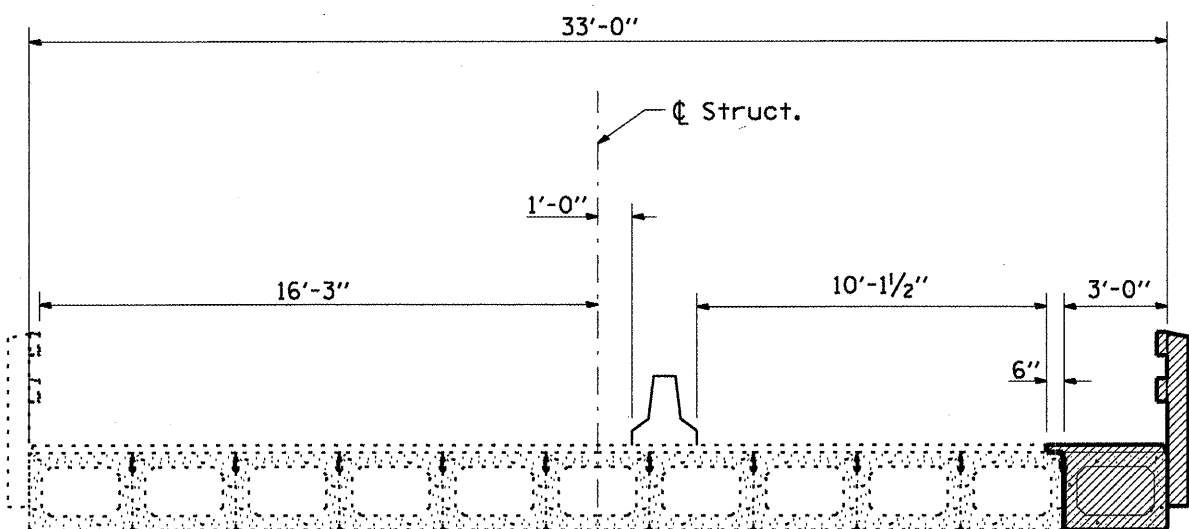
DESIGNED	A.J.B.	EXAMINED	Carl Proyer
CHECKED	V.H.V.	PASSED	Ralph E. Anderson
DRAWN	Drew Christopher		
CHECKED	A.J.B., V.H.V.		

RAIL DETAILS
F.A. RT. 51
JOHNSON COUNTY
SN 044-0020

**Whenever the lower insert assemblies interfere with strand locations, the #3 bars shall be cut and adjusted in order to allow raising or lowering of the lower inserts. Maximum adjustment not to exceed 1/2 inch.

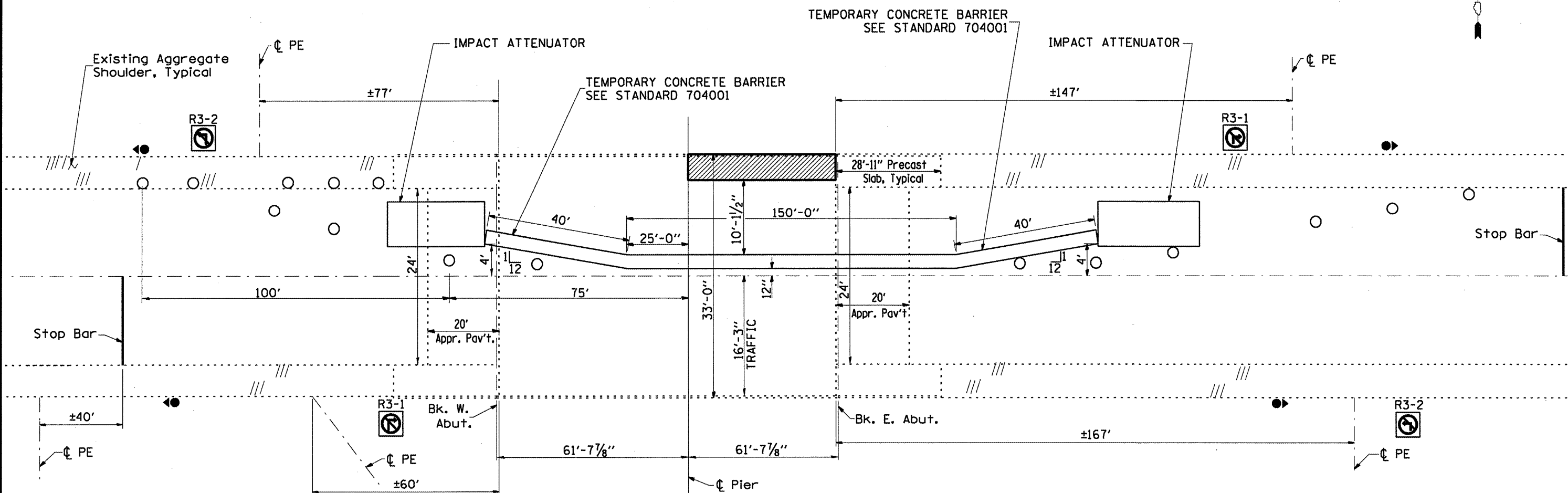
STATE OF ILLINOIS
DEPARTMENT OF TRANSPORTATION

ROUTE NO.	SECTION	COUNTY	TOTAL SHEETS	SHEET NO.
FAP 885 FAP 328	*	JOHNSON WHITE	11	8
FED. ROAD DIST. NO. 7		ILLINOIS	FED. AID PROJECT:	
* 11011-1, 1051-2 CONTRACT NO. 78083				



**TEMPORARY CONCRETE BARRIER
LOOKING WEST**

SEE TRAFFIC CONTROL AND PROTECTION STANDARD 701321 FOR DETAILS NOT SHOWN.



- TRAFFIC SIGNAL
- ▨ WORK AREA
- DRUM WITH STEADY BURNING LIGHT

**TEMPORARY CONCRETE BARRIER
044-0020**

Drawing is not to scale.

STATE OF ILLINOIS
DEPARTMENT OF TRANSPORTATION

ROUTE NO.	SECTION	COUNTY	TOTAL SHEETS	SHEET NO.	SHEET NO. 1
FAP 328		WHITE	11	9	3 SHEETS
FED. ROAD DIST. NO. 7	ILLINOIS	FED. AID PROJECT			

Contract Number: 78063

GENERAL NOTES

All structural steel shall conform to AASHTO Classification M-270 Gr. 36, unless otherwise noted.

Plan dimensions and details relative to existing plans are subject to routine variations. The Contractor shall field verify existing dimensions and details affecting new construction and make necessary approved adjustments prior to construction or ordering of materials. Such variations shall not be cause for additional compensation for a change in scope of the work, however, the Contractor will be paid for the quantity actually furnished based upon the unit price bid for the work.

The contractor is advised that the existing PPC Deck Beams are in a deteriorated condition with reduced load carrying capacity. It is the contractor's responsibility to account for the condition of the beams when developing construction procedures.

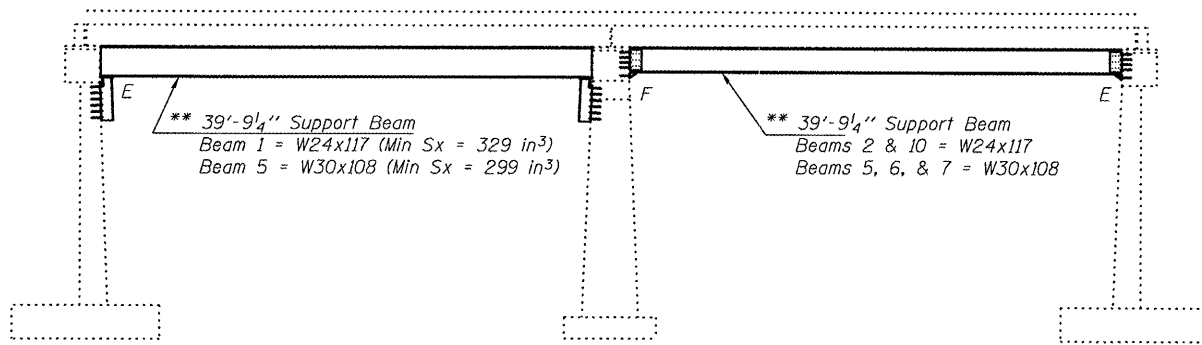
See Section 584 of the Standard Specifications for Epoxy Grouting of Threaded Rods; Minimum embedment 9".

If the contractor's procedure for placement of beams involves placement of cranes or other heavy equipment on the bridge, a detailed procedure shall be submitted to the Engineer for approval. The procedure shall include calculations, prepared and sealed by an Illinois Licensed Structural Engineer, verifying that the equipment and procedure used will not overstress the existing beams. To distribute load to multiple beams shall be used at all times under crane tracks or wheels and any outriggers in the down position. If necessary, shims shall be used under the crane mat to ensure uniform contact with the underlying beams.

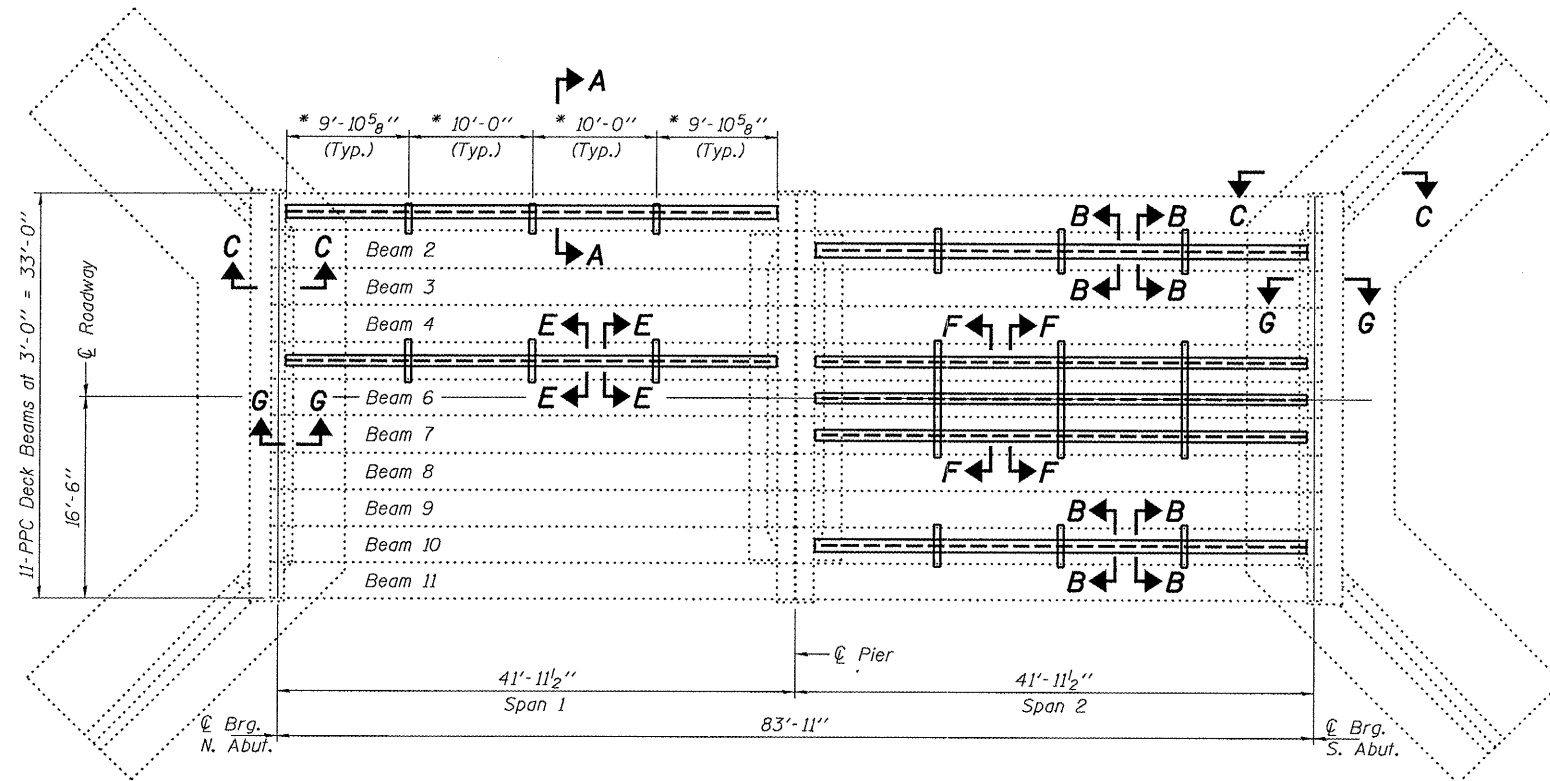
The cost of epoxy grouting threaded rods on the pier cap, abutments and beams shall be included with Furnishing and Erecting Structural Steel.

The Contractor has the option of using used steel. See Special Provisions..

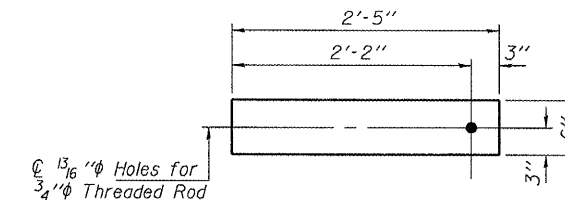
- * ϕ Transverse tie \bar{R} 's (3 per span). Place additional shims at midpoints between tie \bar{R} 's. Securely weld shims to top flange of support beam. Minimum shim size is 6" x flange width.
- ** Contractor is to verify beam length prior to ordering material. Other sections meeting the section modulus requirements shown may be allowed subject to approval by the Bureau of Bridges and Structures. Maximum Girder depth = 24" for Span 1 Beam 1 and Span 2 Beams 2 & 10. Maximum Girder depth = 33" for Span 1 Beam 5 and Span 2 Beams 5 thru 7. No additional payment will be allowed if the contractor chooses a heavier steel section than the one specified in the plans.



ELEVATION

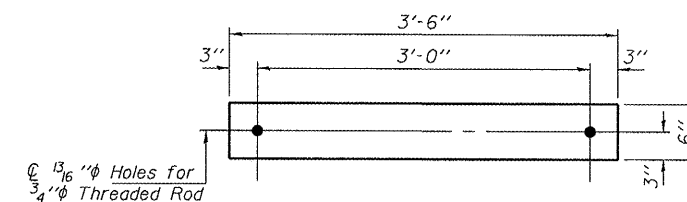


PLAN



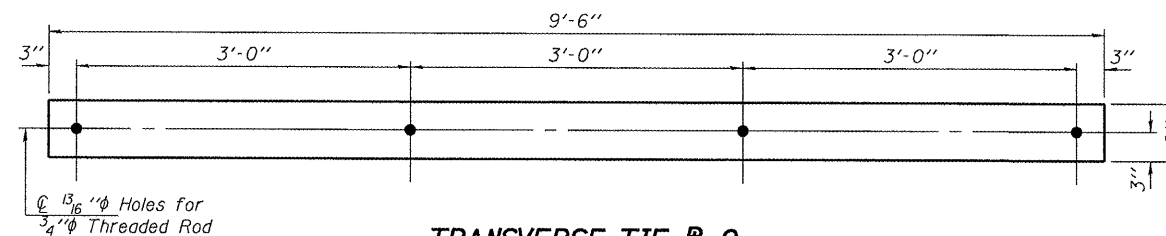
TRANSVERSE TIE \bar{R} A

\bar{R} 1/2" x 6" x 2'-5"
(3 Required)



TRANSVERSE TIE \bar{R} B

\bar{R} 1/2" x 6" x 3'-6"
(9 Required)



TRANSVERSE TIE \bar{R} C

\bar{R} 1/2" x 6" x 9'-6"
(3 Required)

TOTAL BILL OF MATERIAL

ITEM	UNIT	QUANTITY
Furnishing and Erecting Structural Steel	Pound	35,450

PLAN & ELEVATION

FAP RT. 328

WHITE COUNTY

SN 097-0022



EXPIRES 11-30-2008

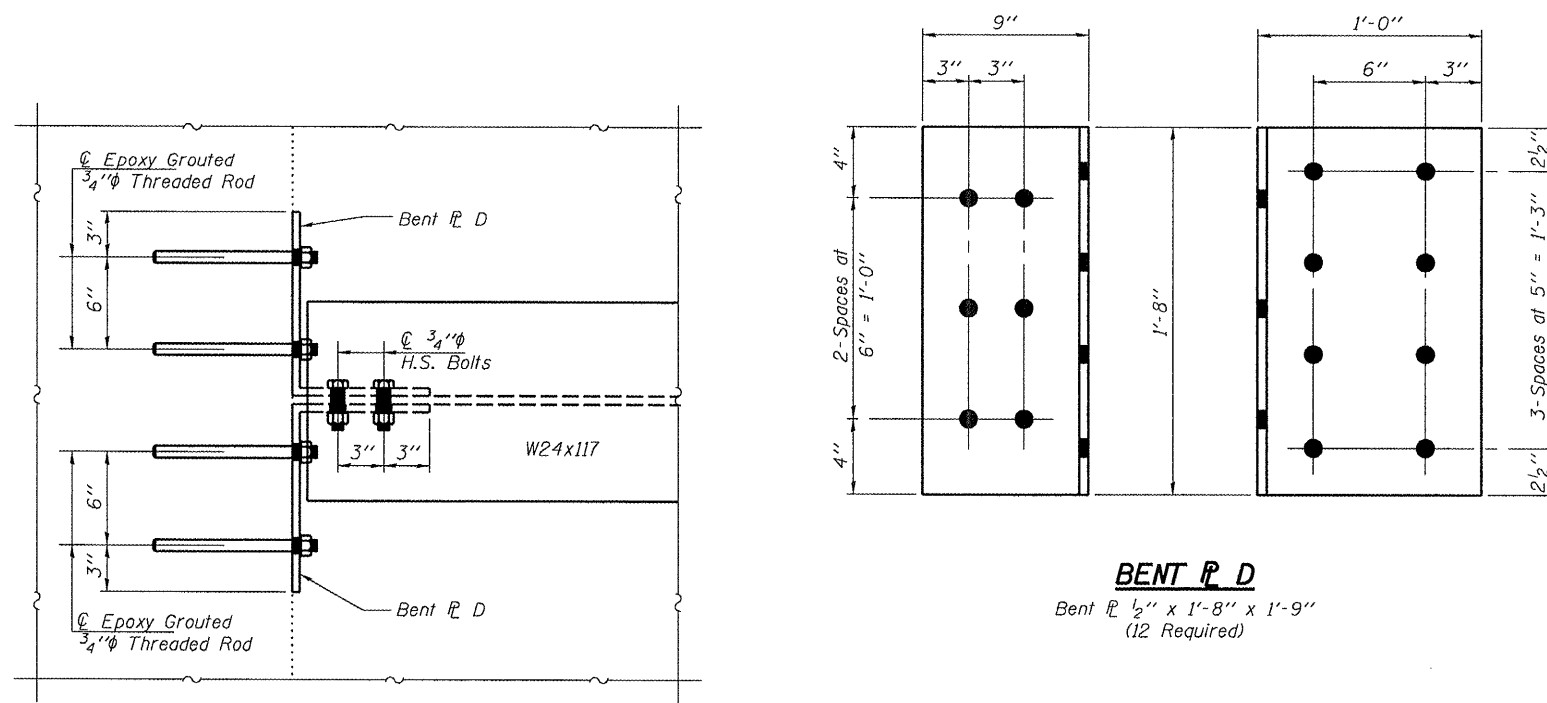
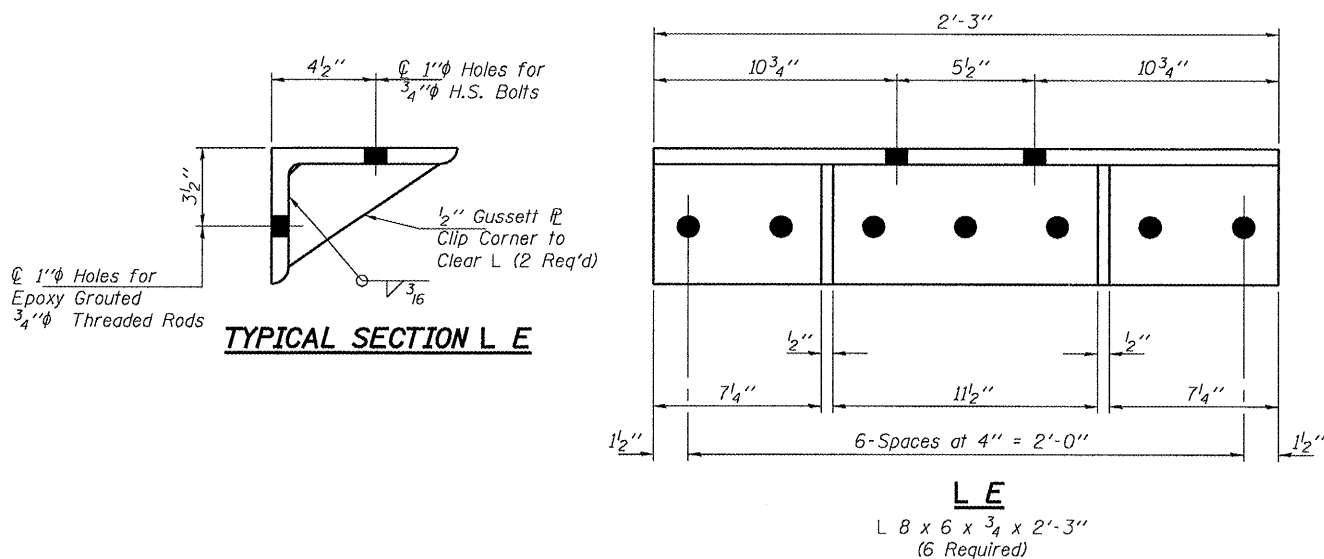
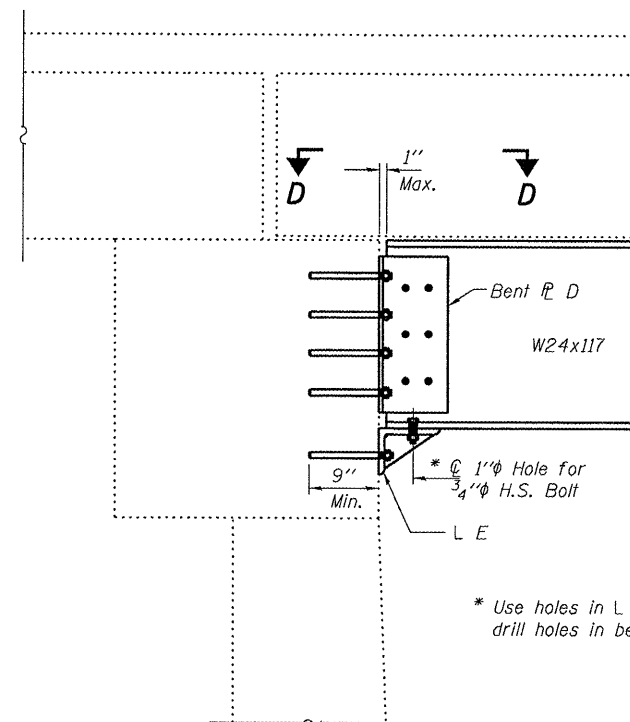
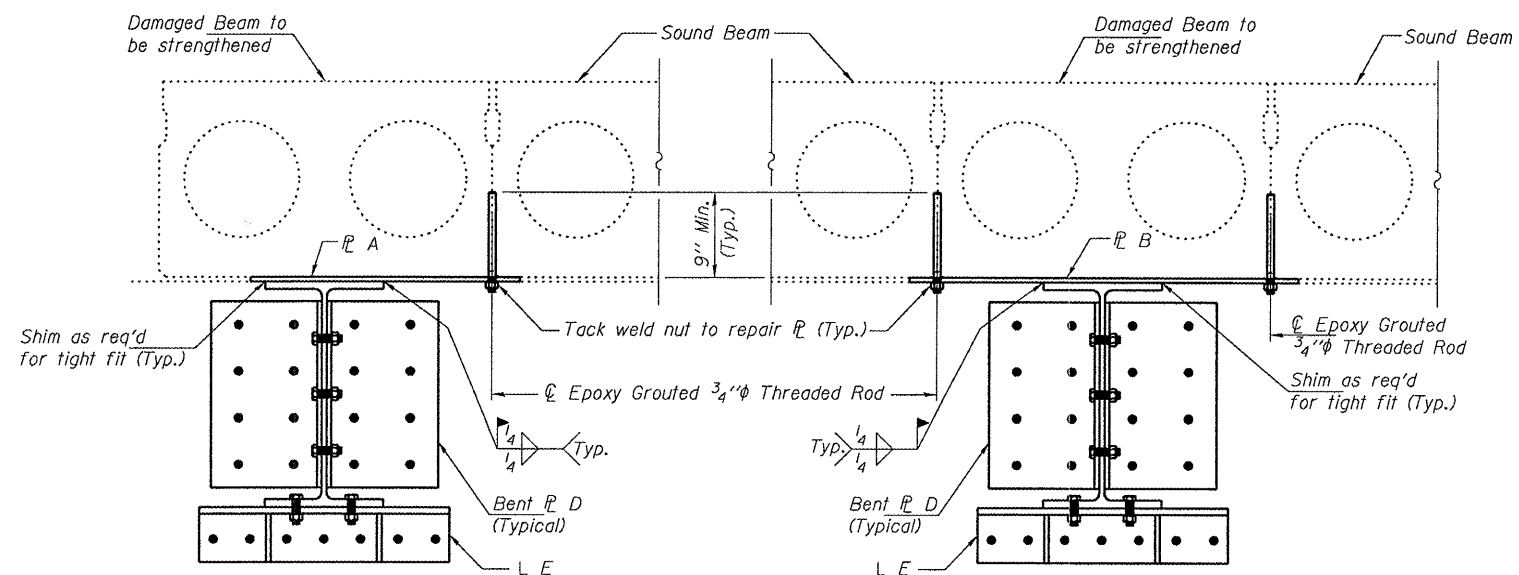
DESIGNED	<i>Victor H. Velle</i>	APRIL 24, 2008
CHECKED	<i>Steffen</i>	EXAMINED <i>Ralph E. Anderson</i>
DRAWN	Steffen	PASSED <i>Ralph E. Anderson</i>
CHECKED	<i>VKV</i>	ENGINEER OF BRIDGES AND STRUCTURES

STATE OF ILLINOIS
DEPARTMENT OF TRANSPORTATION

ROUTE NO.	SECTION	COUNTY	TOTAL SHEETS	SHEET NO.
FAP 328		WHITE	11	10
FED. ROAD DIST. NO. 7	ILLINOIS	FED. AID PROJECT		

SHEET NO. 2
3 SHEETS

Contract Number: 78063



DESIGNED	VHV
CHECKED	DAB
DRAWN	Steffen
CHECKED	VHV DAB

APRIL 24, 2008
EXAMINED *Carl Harvey*
ENGINEER OF STRUCTURAL SERVICES
PASSED *Ralph E. Anderson*
ENGINEER OF BRIDGES AND STRUCTURES

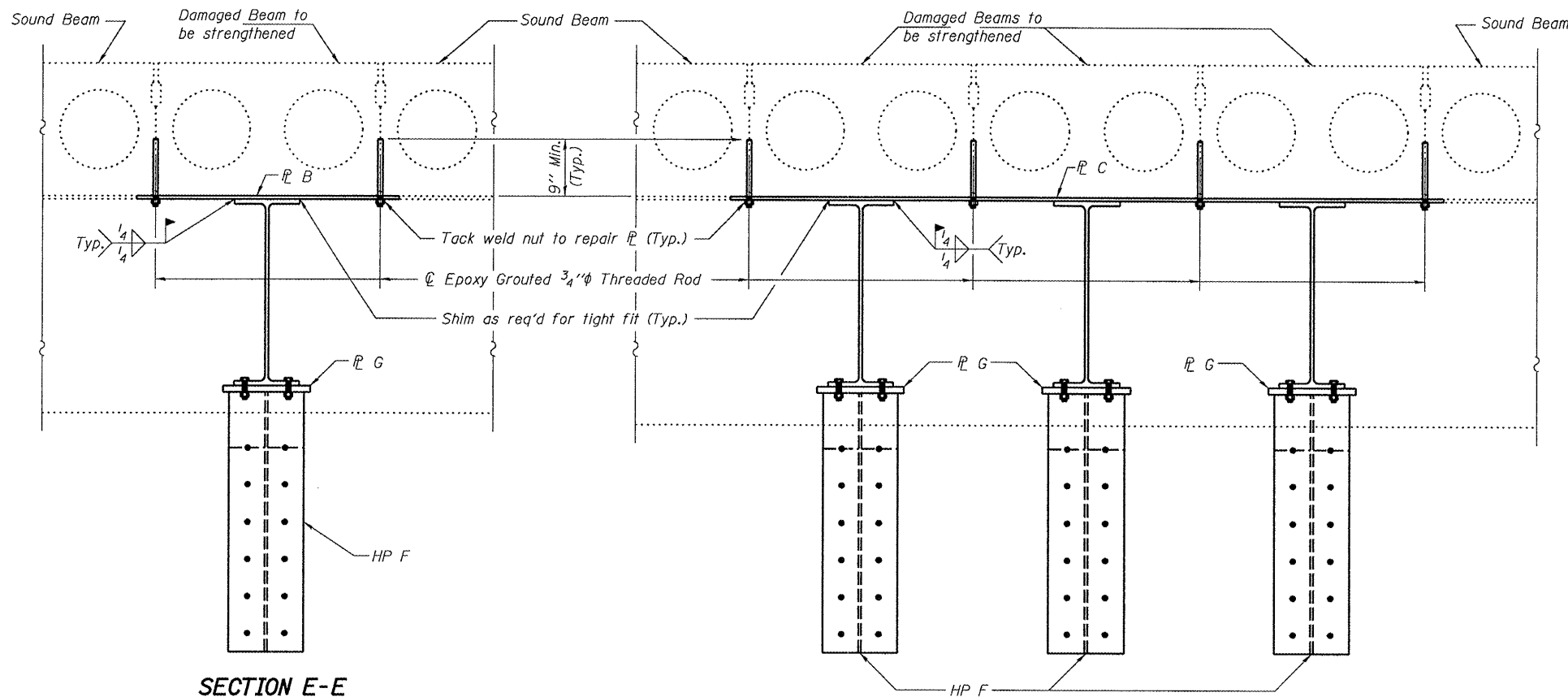
REPAIR DETAILS
FAP RT. 328
WHITE COUNTY
SN 097-0022

STATE OF ILLINOIS
DEPARTMENT OF TRANSPORTATION

ROUTE NO.	SECTION	COUNTY	TOTAL SHEETS	SHEET NO.
FAP 328		WHITE	11	11
FED. ROAD DIST. NO. 7	ILLINOIS	FED. AID PROJECT-		

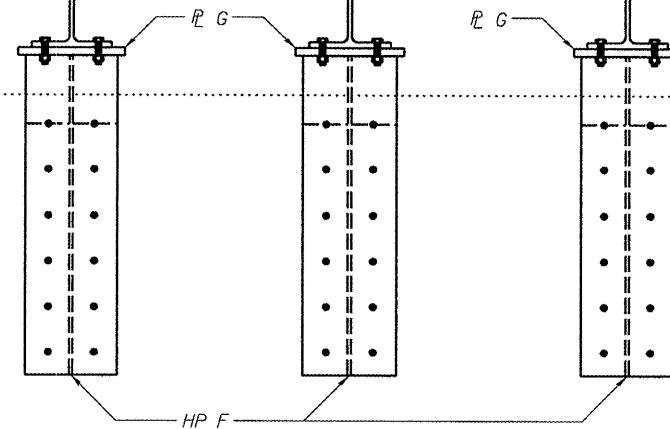
SHEET NO. 3
3 SHEETS

Contract Number: 78063



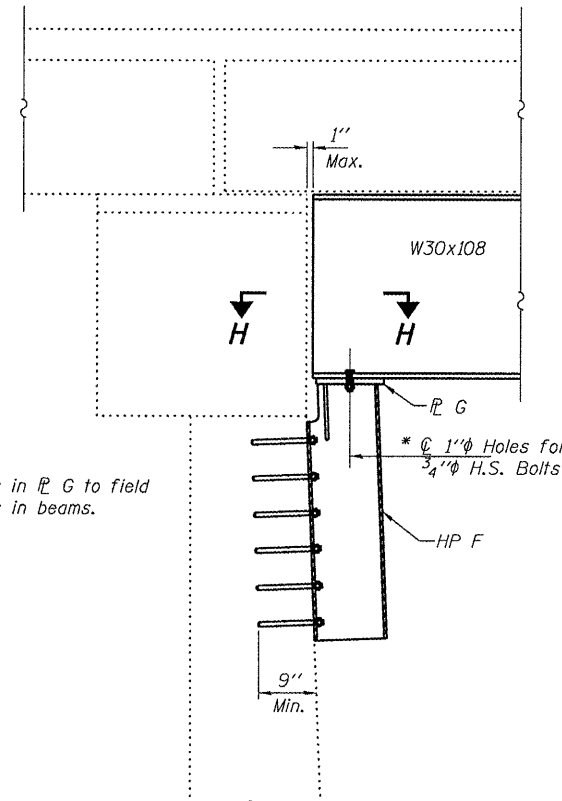
SECTION E-E

Typical Span 1 Beam 5



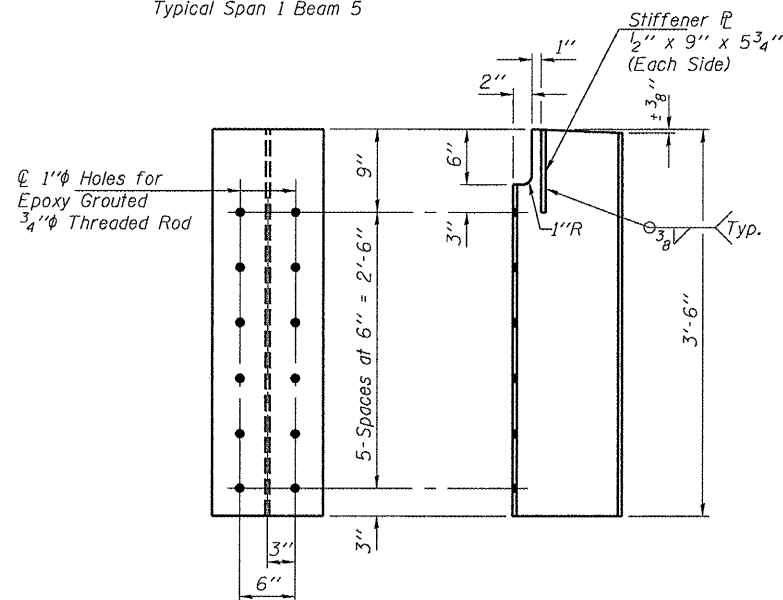
SECTION F-F

Typical Span 2 Beams 5, 6, & 7



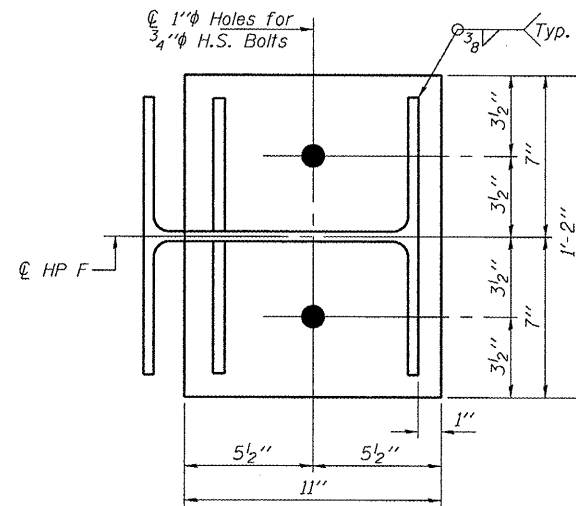
SECTION G-G

(Abutment connection shown, Pier connection similar)
Typical Span 1 Beam 5, Span 2 Beams 5, 6, & 7



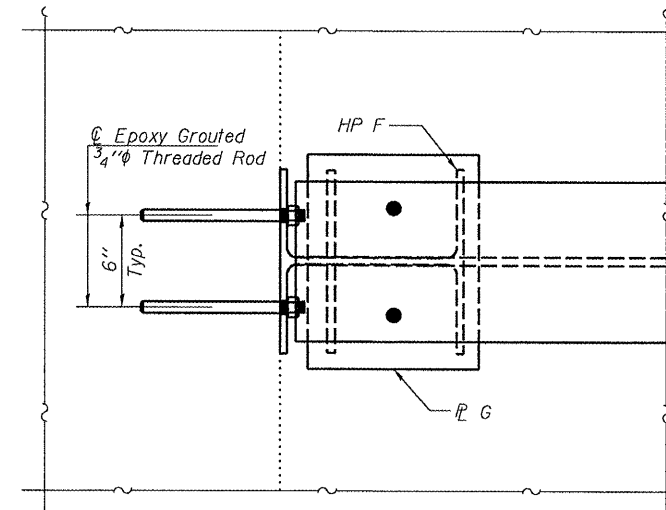
HP F

HP12x53 x 3'-6"
(8 Required)



P G

P 1" x 11" x 1'-2"
(8 Required)



SECTION H-H

DESIGNED	VHV
CHECKED	DAB
DRAWN	Steffen
CHECKED	VHV DAB

APRIL 24, 2008
EXAMINED *Carl Perry*
ENGINEER OF STRUCTURAL SERVICES
PASSED *Ralph E. Anderson*
ENGINEER OF BRIDGES AND STRUCTURES

REPAIR DETAILS
FAP RT. 328
WHITE COUNTY
SN 097-0022