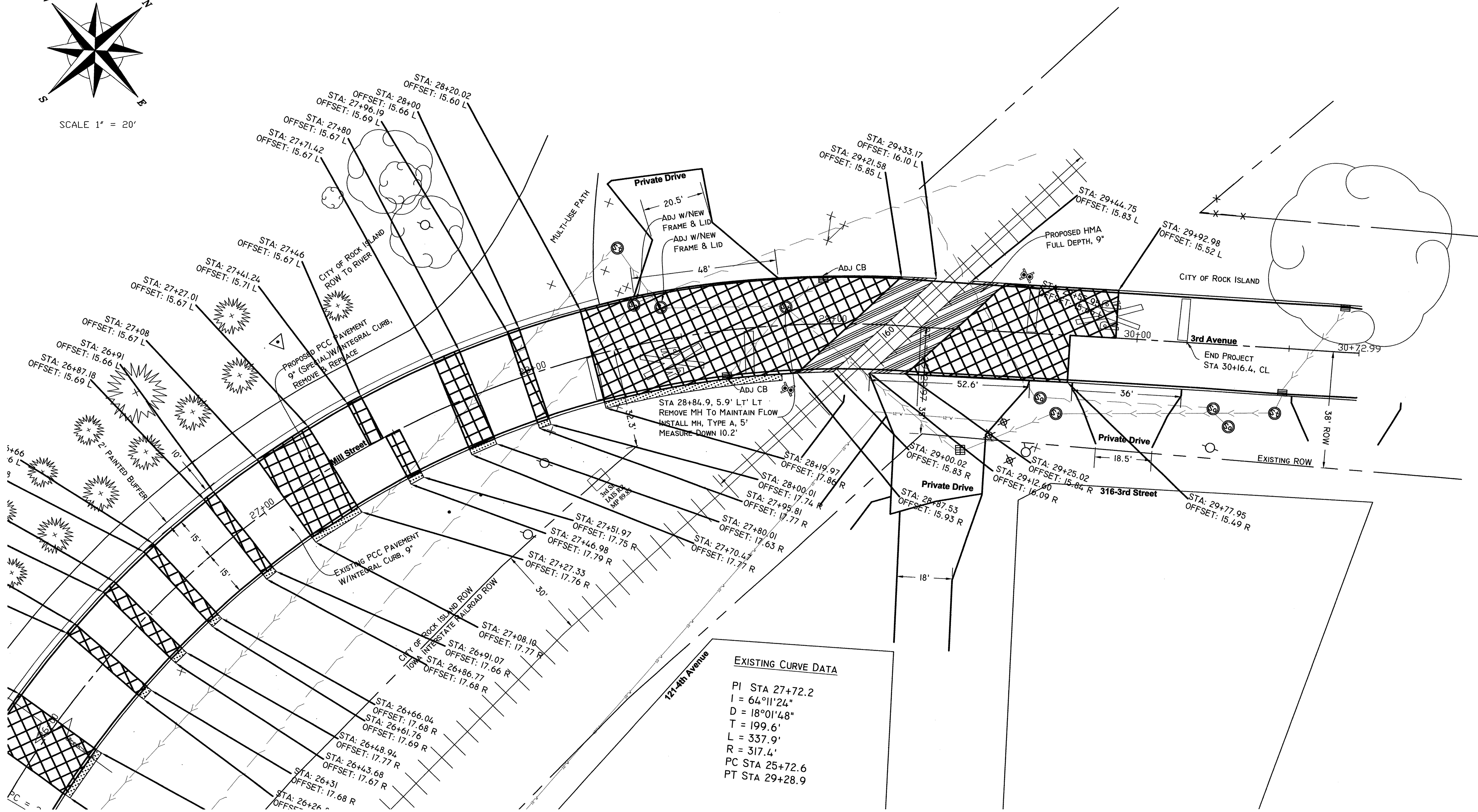


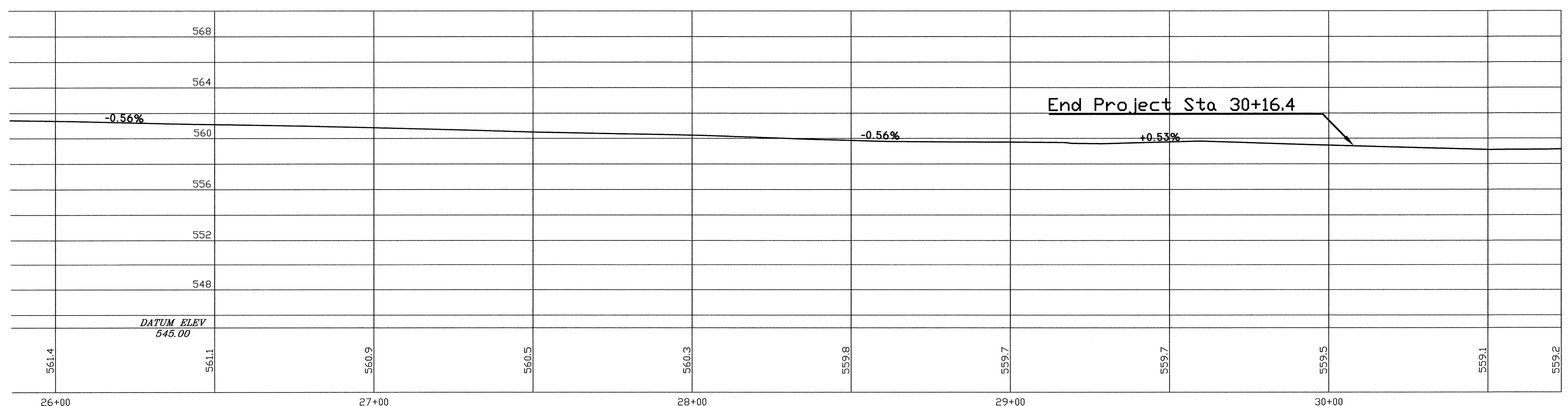
SCALE 1" = 20'



LEGEND

	PCC PAVEMENT 9" Special WITH INTEGRAL CURB. REMOVE & REPLACE
	HOT-MIX ASPHALT, FULL DEPTH, 9"
	HOT-MIX ASPHALT, FULL DEPTH, 3"
	SDD
	Water Valve Manhole
	Sanitary Manhole
	Storm Manhole
	Water Valve Service Valve
	Water Valve Service Valve
	Single Catch Basin
	Hand Hold
	Sanitary Sewer
	Storm Sewer
	GAS
	Water Main
	Telephone
	Guardrail
	Fiber Optic
	Rail Road

EXISTING CURVE DATA
 PI STA 27+72.2
 I = 64°11'24"
 D = 18°01'48"
 T = 199.6'
 L = 337.9'
 R = 317.4'
 PC STA 25+72.6
 PT STA 29+28.9



CITY OF ROCK ISLAND ENGINEERING DIVISION		
Mill Street Rehabilitation 3rd Avenue to 6th Avenue		
Job Number 2550		Date April 2, 2008
Computer Drawing Name S:PW/Eng/2550	ROCK ISLAND ILLINOIS	By WLC
		Sheet 6
		Of 14