



CITY OF ROCK ISLAND, ILLINOIS

ROCK ISLAND
ILLINOIS

(FAU 5803) Mill Street Rehabilitation 3rd Avenue To 6th Avenue

Project No. HPP-2435 (001)

Section No. 05-00175-00-RS

City Job No. 2550

Job No. C-92-051-06

Contract 85435

MAYOR
MARK W. SCHWIEBERT

ALDERMEN	WARD
TERRY M. A. BROOKS I	1
DAVID A. CONROY	2
DENNIS E. PAULEY	3
STEPHEN L. TOLLENAER	4
MARGIE MEJIA-CARABALLO	5
JOY MURPHY	6
CHARLES AUSTIN III	7

CITY MANAGER
JOHN C. PHILLIPS

PUBLIC WORKS DIRECTOR
ROBERT T. HAWES, P.E.

CITY ENGINEER
JAMES E. JOHNSON, P.E.

SHEET NO.	TITLE	SCALE
1	Cover Sheet	Not to Scale
2	Quantities, Legend And Typical Sections	Not to Scale
3	Schedule of Quantities	Not to Scale
4-6	Plan And Profile	1" = 20' Horiz 1" = 5' Vert
7	Pavement Marking Detail	1" = 40'
8-10	Construction Staging/Traffic Control	Not To Scale
11-14	CRI Standards	Not To Scale

420501-04	PCC Pavement And PCC Base Course Adjacent To Railroad Grade Crossing
701301-02	Lane Closure, 2L, 2W, Short Time Operations
701311-02	Lane Closure, 2L, 2W, Moving Operations-Day Only
701501-04	Urban Lane Closure, 2L, 2W, Undivided
701901	Traffic Control Devices
720011	Metal Posts For Signs, Markers & Delineators
728001	Telescoping Steel Sign Support
729001	Applications of Types A & B Metal Posts (For Signs & Markers)
780001-01	Typical Pavement Markings
BLR 10-5	PCC Pavement Special

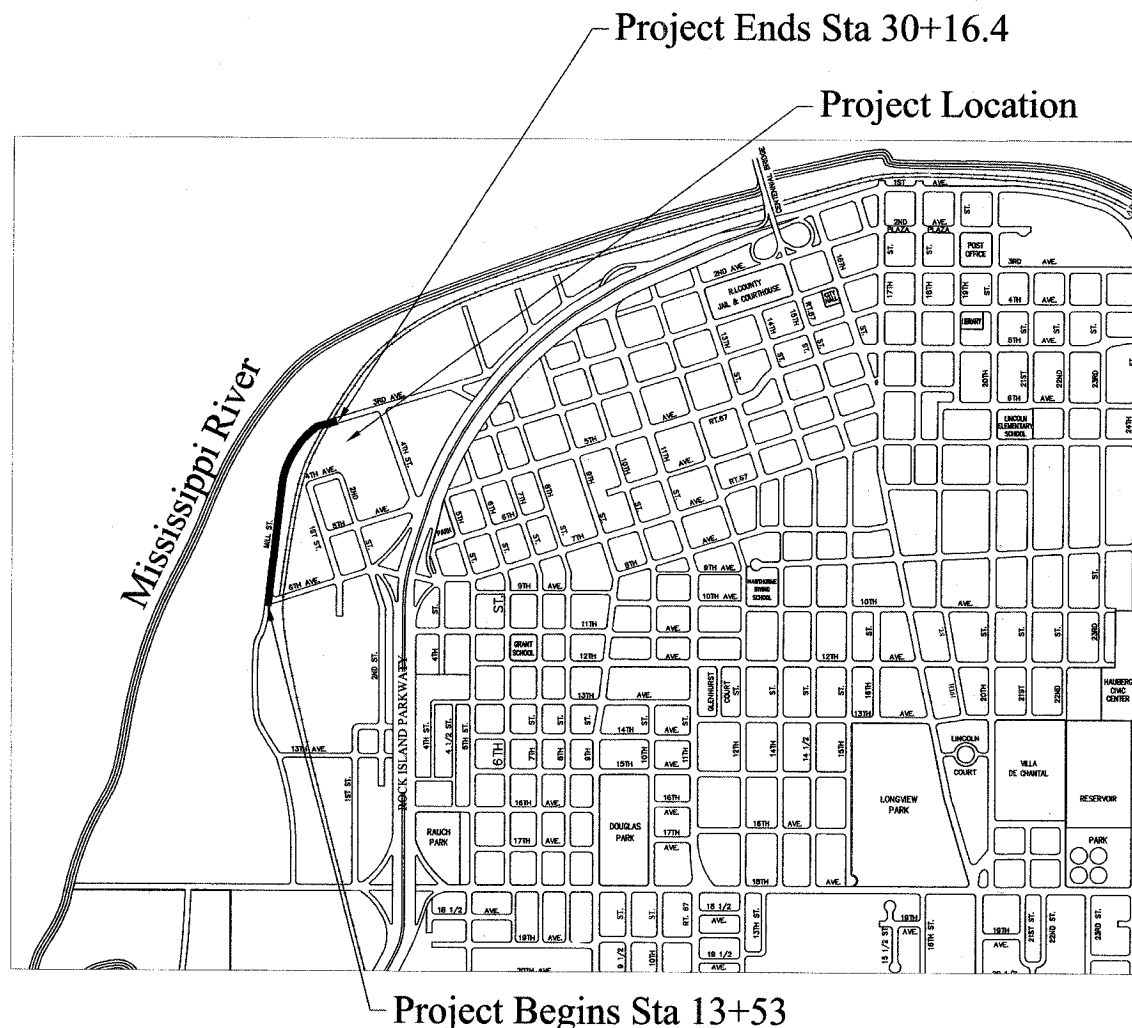
102	Transverse Joints, Headers, And Longitudinal Joints
103	Curb Section & Curb Joint Details
104	Typical Joint Pattern For 25' Streets
106	Driveway Standard
115	Detail Of Joint Filler
116	Reinforcement Steel Placement In Patches
201	Standard Manhole
204	Single Catch Basin
210	Catch Basin Special
212	Trench detail For Storm And Sanitary Sewer Installation
217	Sewer Pipe Connections
305	Manhole Box-Out & Water Service Box Sleeve
402	Inlet Filter For Inlet And Pipe Protection

Functional Classification: Collector (Urban)

ADT: 1250; 8% Trucks

Design Speed: 30 M.P.H.

STRUCTURAL DESIGN TRAFFIC FOR THE YEAR 2018
PV = 1050
SU = 24
MU = 176
ROAD / STREET CLASSIFICATION: CLASS III
LOAD LIMIT: 80,000 LBS.
TRAFFIC FACTOR: 1.02
SUBGRADE SUPPORT: Fair
TRANSVERSE JOINT SPACING: 15 FT.
SHOULDER TYPE: INTEGRAL CURB AND GUTTER
OVERLOADS: 2 PER WEEK
DESIGN PAVEMENT THICKNESS: 8 INCHES



NOT TO SCALE

PROJECT LENGTH:
1663.4 Feet (0.315 Mile)

UTILITY OWNERS

MIDAMERICAN ENERGY COMPANY
2811 - 5TH AVE.
ROCK ISLAND, ILLINOIS 61201

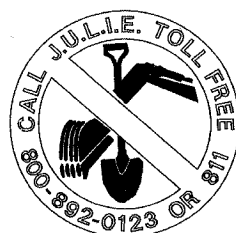
AMERITECH
635 - 18TH ST.
ROCK ISLAND, ILLINOIS 61201

MEDIACOM
3900-26TH AVENUE
MOLINE, ILLINOIS 61_65

CITY OF ROCK ISLAND
MUNICIPAL SERVICES DIVISION
1309 MILL STREET
ROCK ISLAND, ILLINOIS 61201

FOR UTILITY LOCATIONS CALL:
J.U.L.I.E. @ 1-800-892-0123

WARNING



CALL BEFORE
YOU DIG

NOTE:
THIS PROJECT IS LOCATED IN THE
SW 1/4 OF SEC 34, T18N, R2W



THESE PLANS PREPARED BY: CITY OF ROCK ISLAND ENGINEERING DEPARTMENT
APPROVED APRIL 21, 2008
ASSISTANT CITY ENGINEER, CITY OF ROCK ISLAND
PASSED APR 17 2008
DISTRICT 2 ENGINEER OF LOCAL ROADS AND STREETS
RELEASING FOR BID BASED ON LIMITED REVIEW APR 17 2008
DEPUTY DIRECTOR OF HIGHWAYS REGION 2 ENGINEER

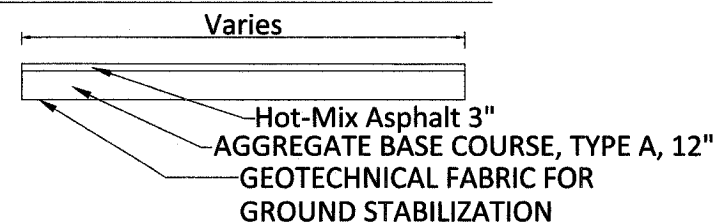
Quantities, Legend & Typical Sections

PAY CODE	Description	Plan Quantity	Units	Construction Type Code
20200100	EARTH EXCAVATION	371	CU YD	J000
21001000	GEOTECHNICAL FABRIC FOR GROUND STABILIZATION	3017	SQ YD	J000
25200100	SODDING	158	SQ YD	J000
28000500	INLET AND PIPE PROTECTION	12	EACH	J000
35100100	AGGREGATE BASE COURSE, TYPE A	1073	TON	J000
55019500	STORM SEWERS, TYPE 1, REINFORCED CONCRETE CULVERT, STORM DRAIN, AND SEWER PIPE, CLASS IV 12"	5	FOOT	J000
40603310	HOT-MIX ASPHALT SURFACE COURSE, MIX "C", N50	0.62	TON	J000
40701861	HOT-MIX ASPHALT PAVEMENT (FULL-DEPTH), 9"	80	SQ YD	J000
44000100	PAVEMENT REMOVAL	2949	SQ YD	J000
60231700	MANHOLES, SPECIAL, 5'-DIAMETER, TYPE 1 FRAME, CLOSED LID	1	EACH	J000
60242400	INLETS, SPECIAL	1	EACH	J000
60250200	CATCH BASINS TO BE ADJUSTED	5	EACH	J000
60255800	MANHOLES TO BE ADJUSTED WITH NEW TYPE 1 FRAME, CLOSED LID	6	EACH	J000
60500070	REMOVING MANHOLES TO MAINTAIN FLOW	1	EACH	J000
60500080	REMOVING CATCH BASINS TO MAINTAIN FLOW	3	EACH	J000
60500090	REMOVING INLETS TO MAINTAIN FLOW	1	EACH	J000
67100100	MOBILIZATION	1	L SUM	J000
70101700	TRAFFIC CONTROL AND PROTECTION	1	L SUM	J000
* 78001100	PAINT PAVEMENT MARKING - LETTERS AND SYMBOLS	122	SQ FT	J000
* 78001110	PAINT PAVEMENT MARKING - LINE 4"	413	FOOT	J000
* 78001180	PAINT PAVEMENT MARKING - LINE 24"	60	FOOT	J000
LR420133	PORTLAND CEMENT CONCRETE PAVEMENT 9" (SPECIAL) WITH INTEGRAL CURB	2948	SQ YD	J000
* X0811100	RAILROAD CROSSING	1	L SUM	J000
XX005764	CATCH BASINS, SINGLE	3	EACH	J000
* Z0048400	RAILROAD CROSSING REMOVAL	1	EACH	J000
Z0048665	RAILROAD PROTECTIVE LIABILITY INSURANCE	1	L SUM	J000

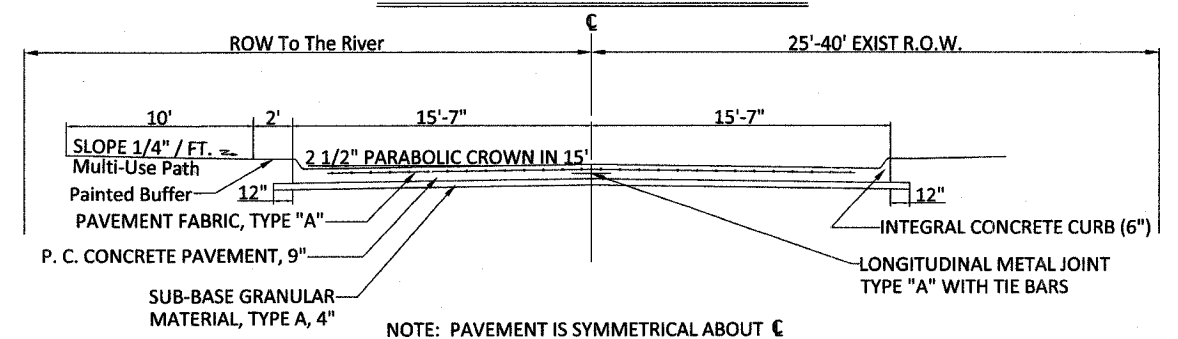
* SPECIALTY ITEMS

BITUMINUS CHART	
Mixture Uses	Surface/Binder
PG:	PG 64-22
Design Air Voids	4.0 @ N50
Mixture Composition	
(Gradation Mixture)	IL 9.5
Friction Aggregate	C
20 Year Seal	0.8
Mix Unit Weight	112 lbs/sy/in

Proposed Hot-Mix Asphalt Surface Course See Plan & Profile For Locations

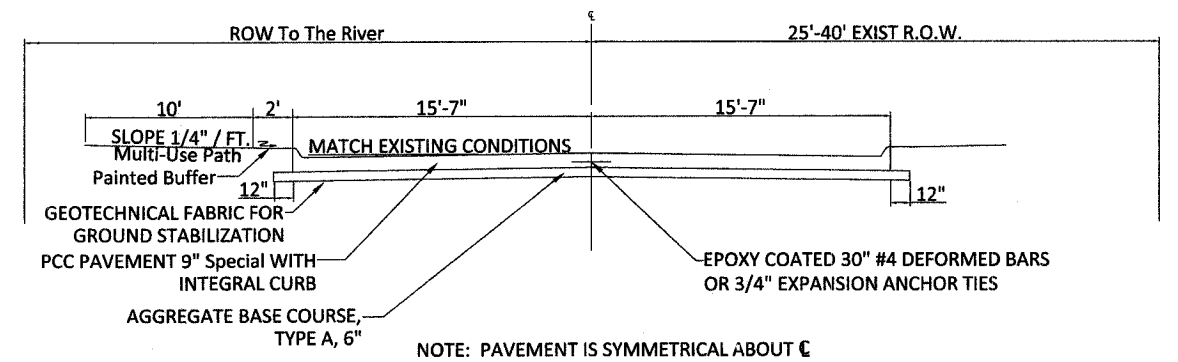


Existing Pavement Conditions



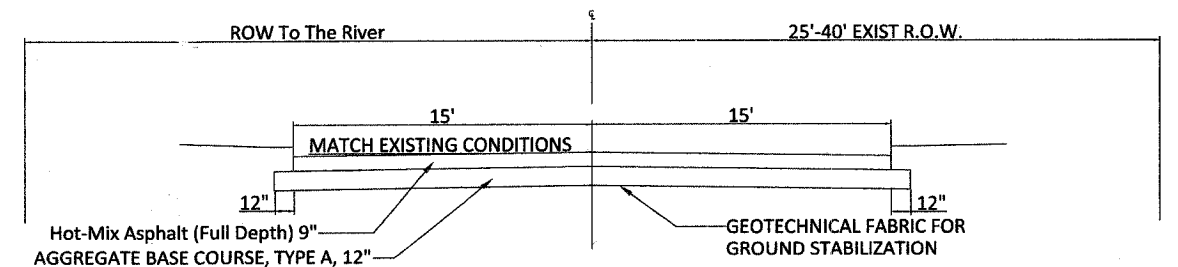
MILL STREET STA. 13+53 to 30+16.4

Proposed Pavement Replacement See Plan & Profile For Locations



MILL STREET STA. 13+53 to 30+16.4

Proposed Hot-Mix Asphalt (Full Depth) 9" See Plan & Profile For Locations

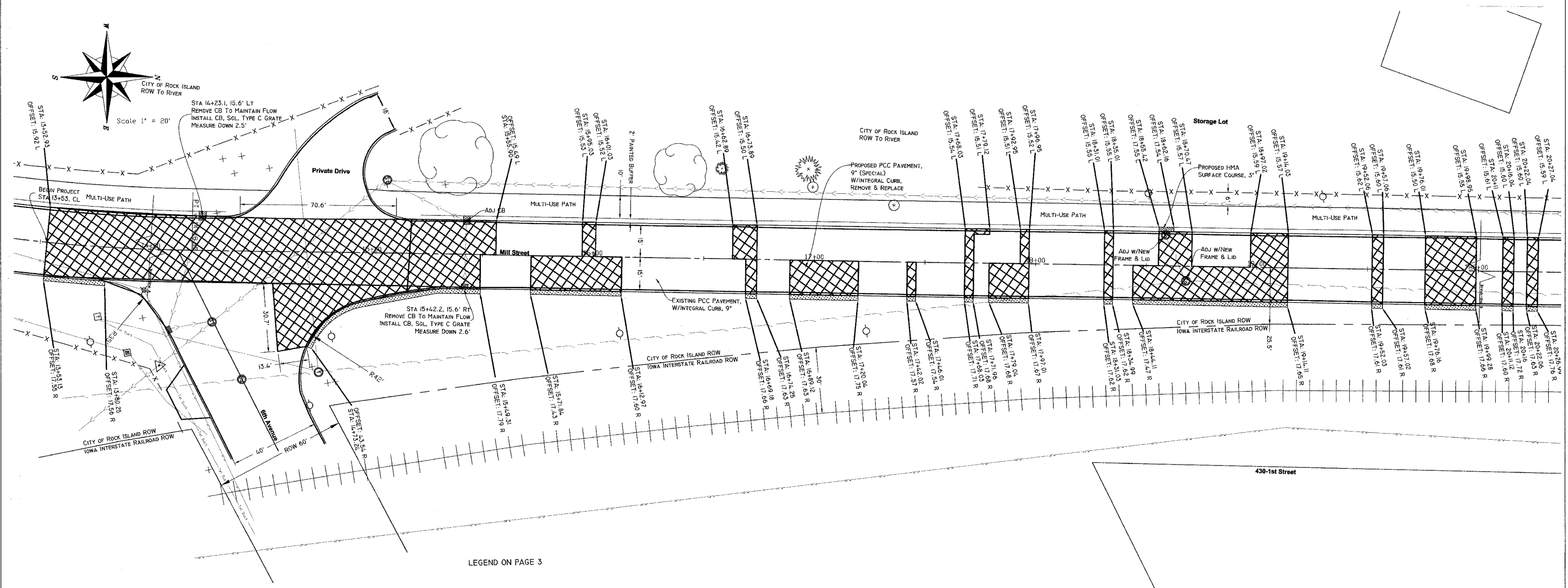


**CITY OF ROCK ISLAND
ENGINEERING DIVISION**

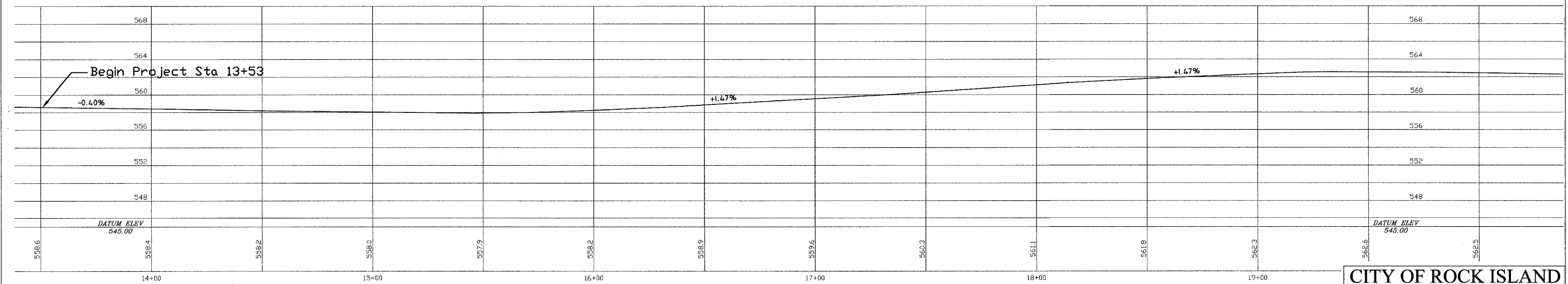
Mill Street Rehabilitation
3rd Avenue to 6th Avenue

Job Number	2550	Date	April 2, 2008
Computer Drawing Name	S:\PW\ENG\Quantities	By	WLC
Sheet	2	Of	None





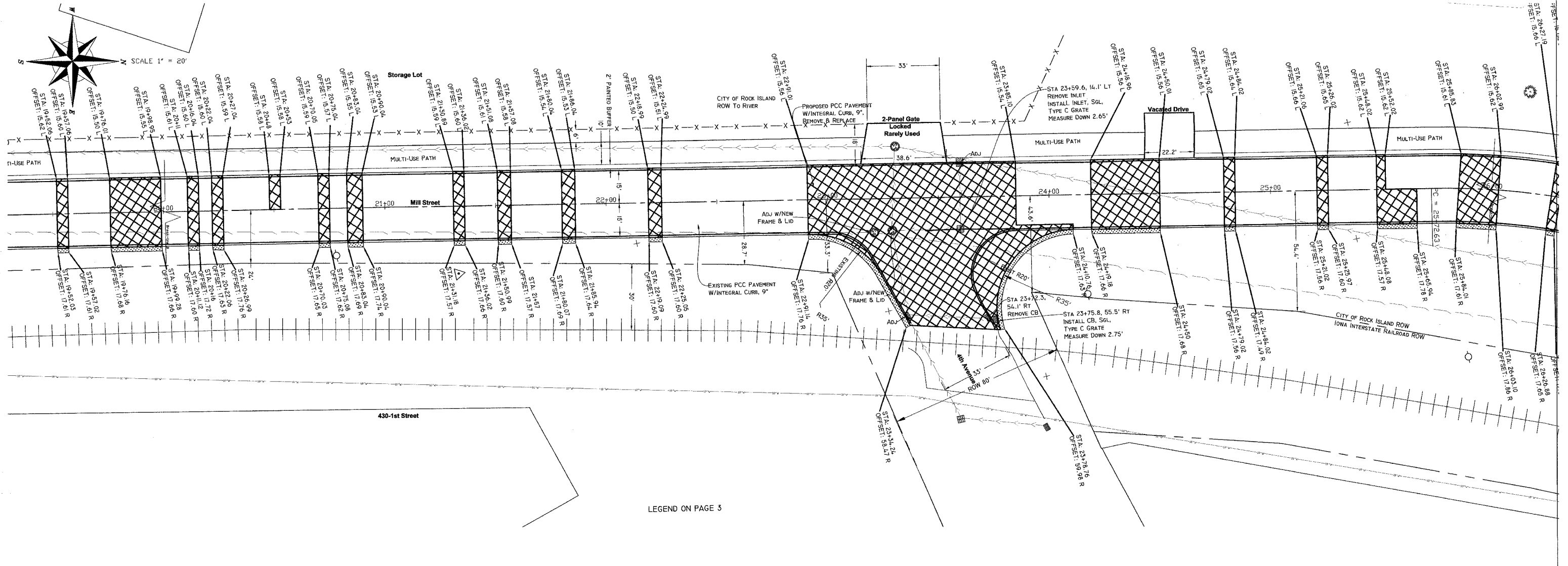
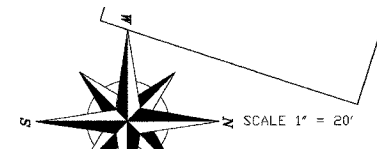
LEGEND ON PAGE 3



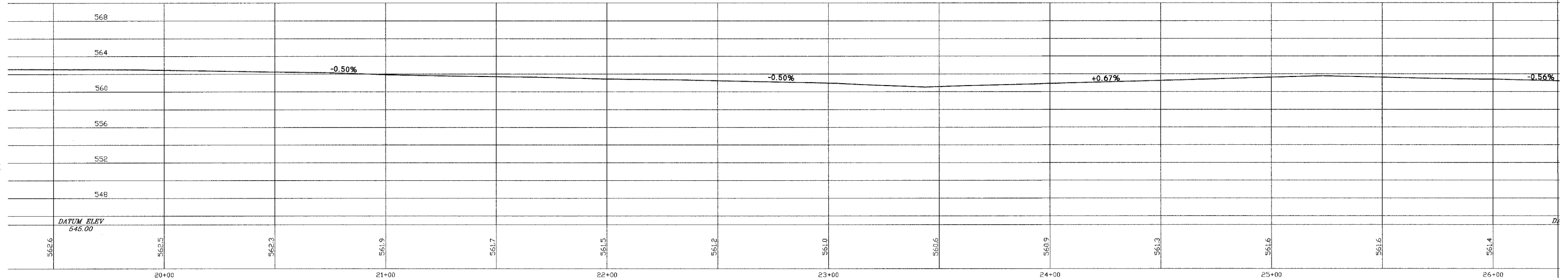
**CITY OF ROCK ISLAND
ENGINEERING DIVISION**

Mill Street Rehabilitation
3rd Avenue to 6th Avenue

Job Number 2550		Date April 2, 2008
Computer Drawing Name S:PW/ENG/Job/2550		By WLC
Sheet 4		Of 14



LEGEND ON PAGE 3



**CITY OF ROCK ISLAND
ENGINEERING DIVISION**

Mill Street Rehabilitation
3rd Avenue to 6th Avenue

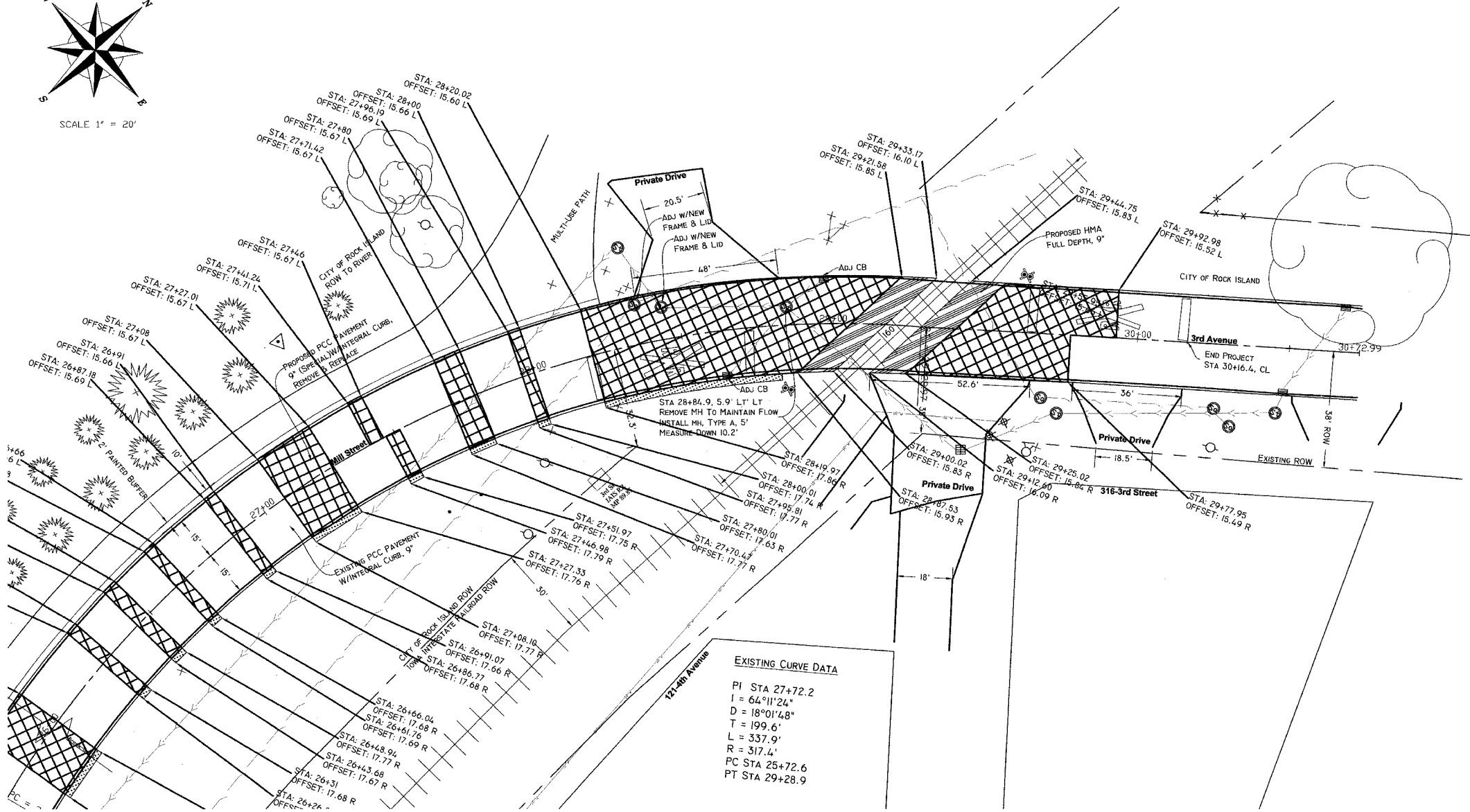
Job Number	2550	Date	April 2, 2008
Computer Drawing Name	S:PW/ENG/Job/2550	By	WLC
		Sheet	5
		Of	14



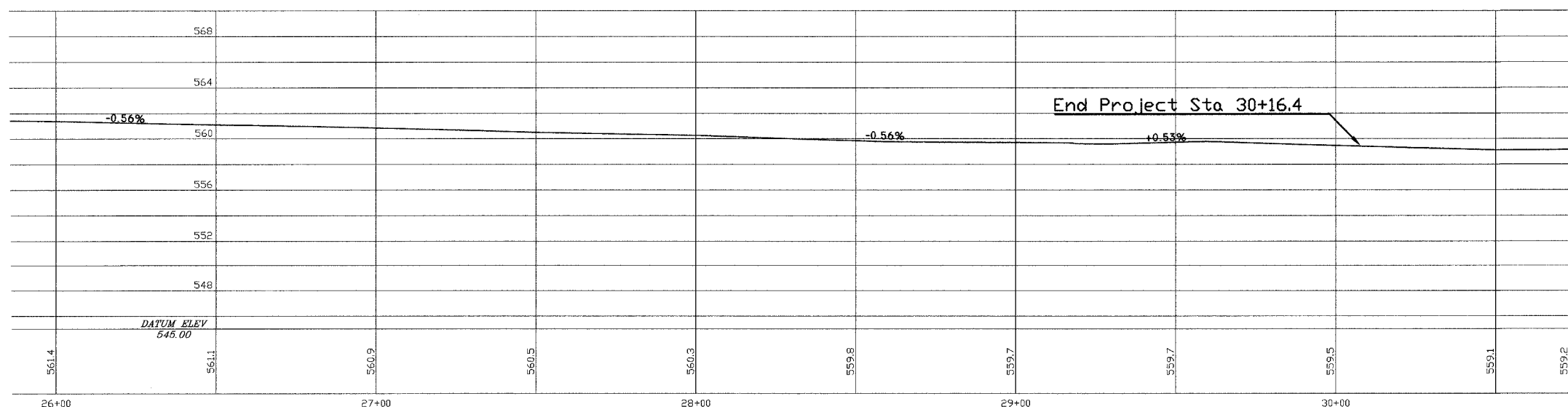
SCALE 1" = 20'

LEGEND

	PCC PAVEMENT 9" Special WITH INTEGRAL CURB, REMOVE & REPLACE
	HOT-MIX ASPHALT, FULL DEPTH, 9"
	HOT-MIX ASPHALT, FULL DEPTH, 3"
	SDD
	Water Valve Manhole
	Sanitary Manhole
	Storm Manhole
	Water Valve Service Valve
	Single Catch Basin
	Hand Hold
	Sanitary Sewer
	Storm Sewer
	Gas Main
	Water Main
	Telephone
	Guardrail
	Fiber Optic
	Rail Road

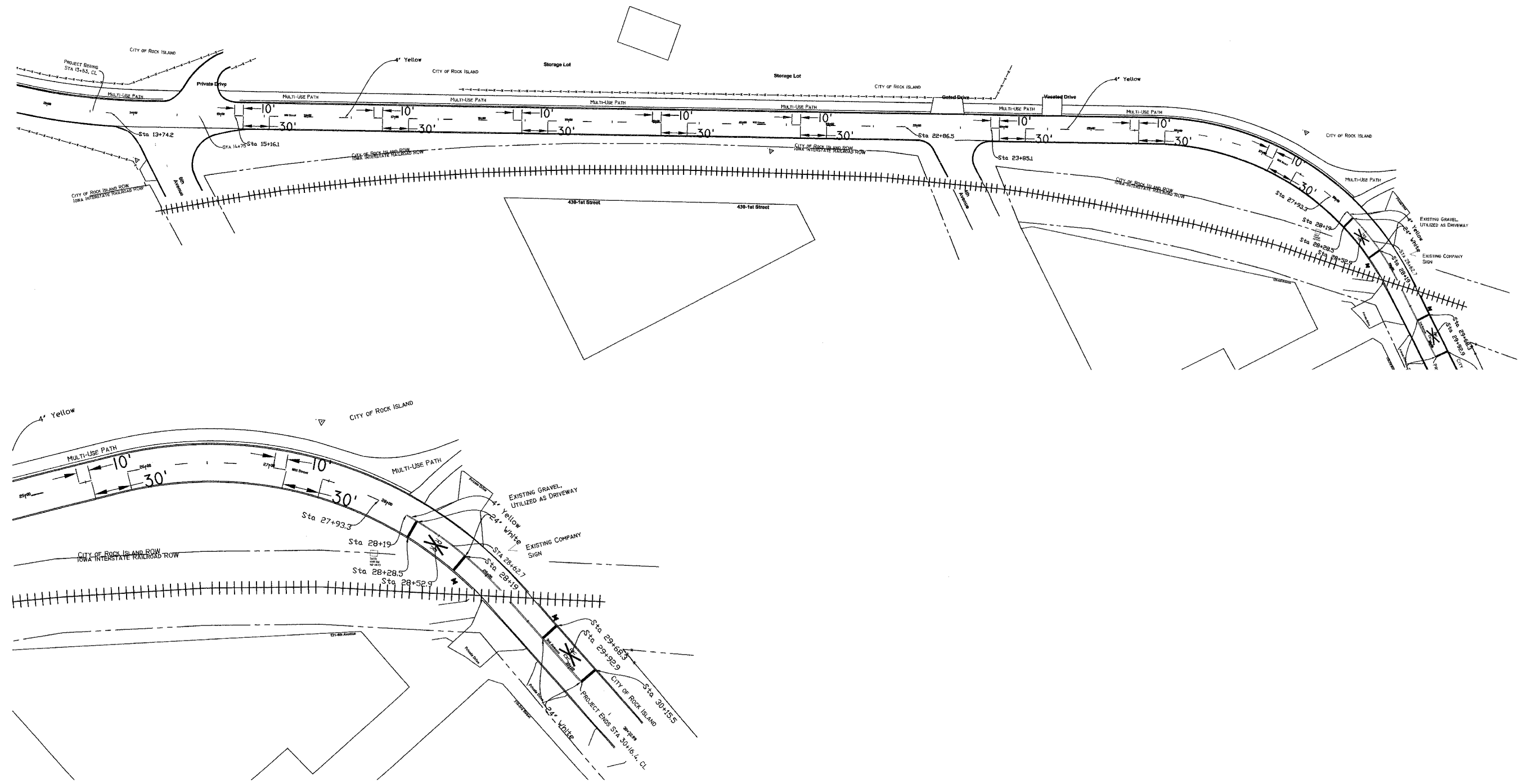



EXISTING CURVE DATA
 PI STA 27+72.2
 I = 64°11'24"
 D = 18°01'48"
 T = 199.6'
 L = 337.9'
 R = 317.4'
 PC STA 25+72.6
 PT STA 29+28.9



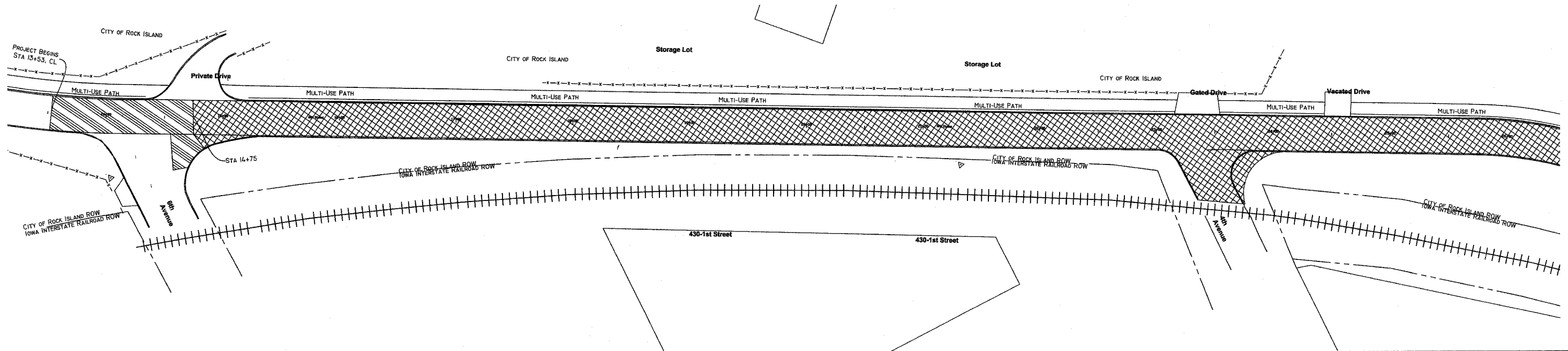
CITY OF ROCK ISLAND ENGINEERING DIVISION			
Mill Street Rehabilitation 3rd Avenue to 6th Avenue			
Job Number	2550	Date	April 2, 2008
Computer Drawing Name	S:PW/Eng/Job/2550	By	WLC
		Sheet	6
		Of	14

PAVEMENT MARKING DETAIL

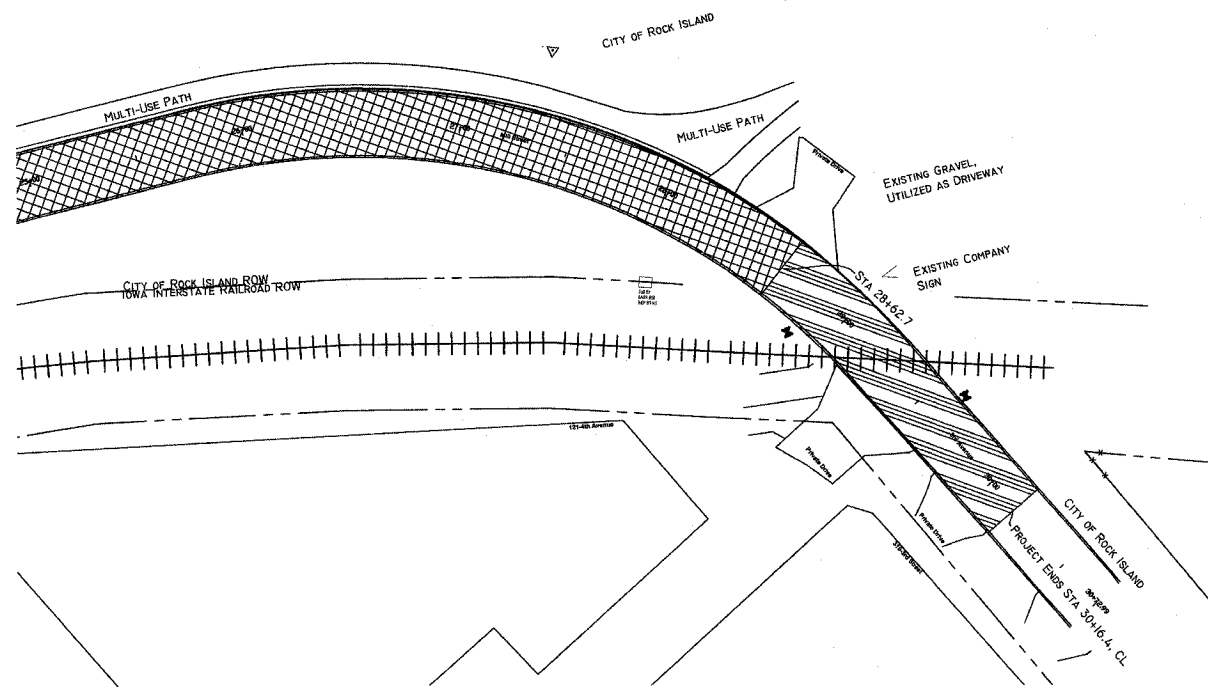


CITY OF ROCK ISLAND ENGINEERING DIVISION		
Mill Street Rehabilitation 3rd Avenue To 6th Avenue		
Job Number	2550	Date April 2, 2008
Computer Drawing Name	S:\PW\ENG\JOBS\2550	By WLC
		Sheet 7 Of 16

CONSTRUCTION STAGING PLAN



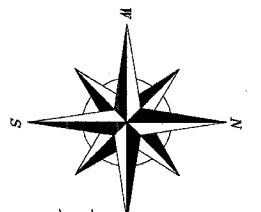
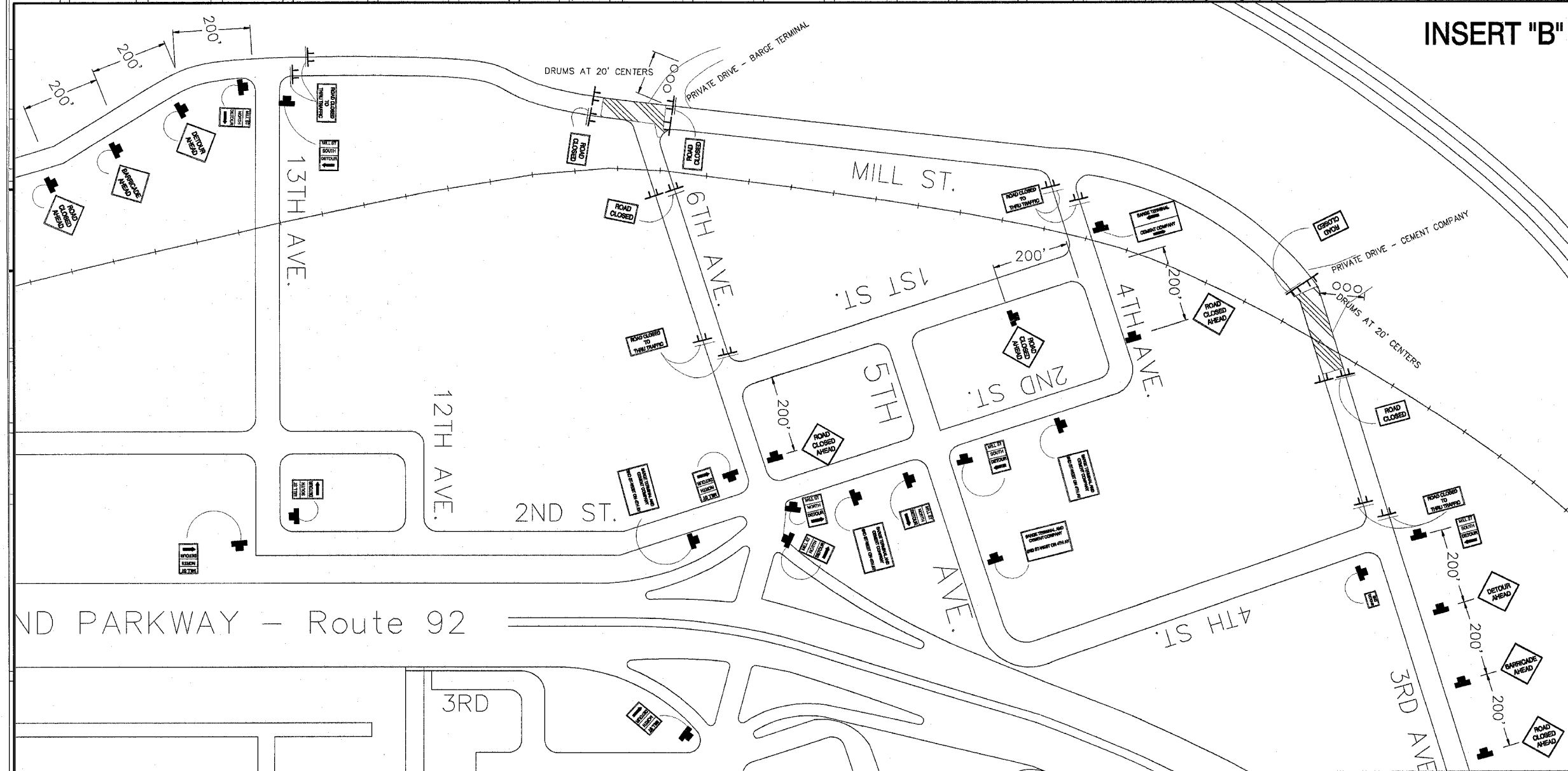
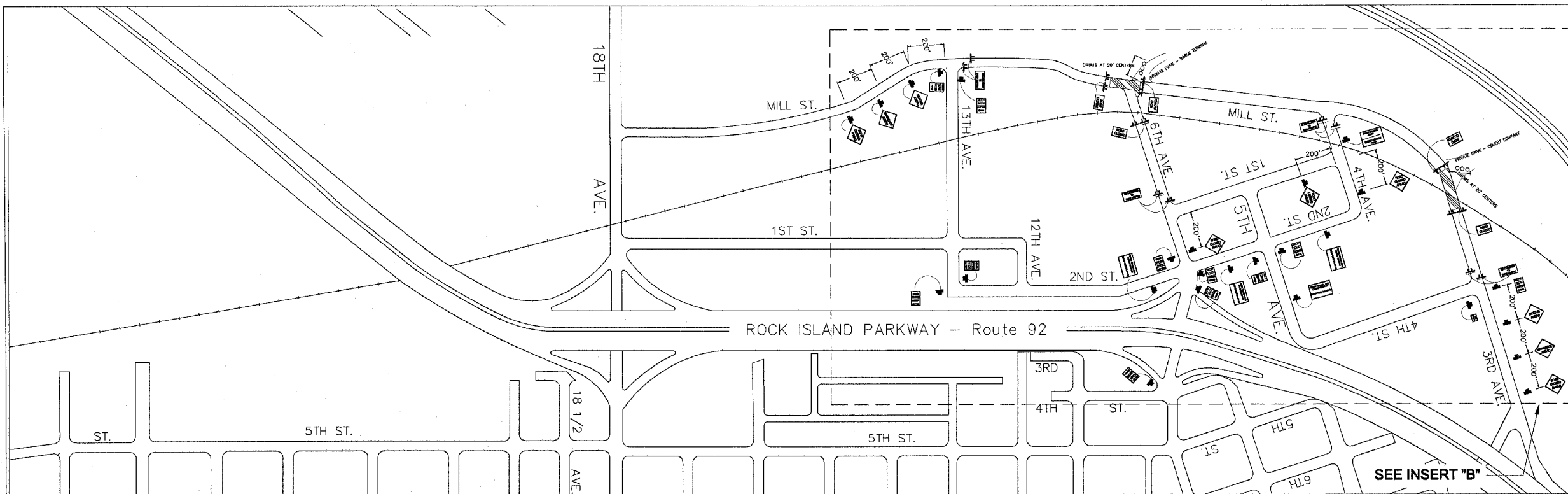
TRAFFIC CONTROL SIGNS AND CONSTRUCTION STAGING LEGEND



 SIGN ON PORTABLE OR PERMANENT SUPPORT	 BARGE TERMINAL CEMENT COMPANY SIGN LETTERING SHALL BE SERIES D CAPITAL LETTERS WITH 5D DIMENSION IN BLACK LETTER WITH ORANGE BACKGROUND PER SPECIAL PROVISION AND STANDARD SPECIFICATIONS 72"x48"	 BARGE TERMINAL AND CEMENT COMPANY 2ND ST-WEST ON 4TH AV SIGN LETTERING SHALL BE SERIES D CAPITAL LETTERS WITH 4D DIMENSION IN BLACK LETTER WITH ORANGE BACKGROUND PER SPECIAL PROVISION AND STANDARD SPECIFICATIONS 72"x48"	 DETOUR AHEAD W20-2(0)-48 48"x48"	 END DETOUR M4-8A 24"x18"	 MILL ST SOUTH DETOUR M4-9R 30"x24" DETOUR WITH SUPPLEMENTAL PLATES	 MILL ST SOUTH DETOUR M4-9L 30"x24" DETOUR WITH SUPPLEMENTAL PLATES		
 TYPE III BARRICADES WITH FLASHING LIGHTS	 CHANNELIZING DRUM	 CEMENT COMPANY USE 7TH AV EXIT SIGN LETTERING SHALL BE SERIES D CAPITAL LETTERS WITH 6D DIMENSION IN BLACK LETTER WITH ORANGE BACKGROUND PER SPECIAL PROVISION AND STANDARD SPECIFICATIONS 72"x48"	 CEMENT COMPANY TAKE THIS EXIT SIGN LETTERING SHALL BE SERIES D CAPITAL LETTERS WITH 6D DIMENSION IN BLACK LETTER WITH ORANGE BACKGROUND PER SPECIAL PROVISION AND STANDARD SPECIFICATIONS 72"x48"	 MILL ST CLOSED 3RD AV - 6TH AV N DETOUR 7TH AV SIGN LETTERING SHALL BE SERIES D CAPITAL LETTERS WITH 6D DIMENSION IN BLACK LETTER WITH ORANGE BACKGROUND PER SPECIAL PROVISION AND STANDARD SPECIFICATIONS 72"x48"	 ROAD CLOSED AHEAD W20-3(0)-48 48"x48"	 DETOUR M4-10R 48"x18"	 MILL ST NORTH DETOUR M4-9R 30"x24" DETOUR WITH SUPPLEMENTAL PLATES	 MILL ST NORTH DETOUR M4-9L 30"x24" DETOUR WITH SUPPLEMENTAL PLATES
 CONSTRUCTION STAGE 1	 CONSTRUCTION STAGE 2	 BARRICADE AHEAD SIGN LETTERING SHALL BE SERIES D CAPITAL LETTERS WITH 7D DIMENSION IN BLACK LETTER WITH ORANGE BACKGROUND PER IDOT REQUIREMENTS, THE SPECIAL PROVISION, AND STANDARD SPECIFICATIONS 48"x48"	 ROAD CLOSED TO THRU TRAFFIC R11-4 60"x30"	CITY OF ROCK ISLAND ENGINEERING DIVISION Mill Street Rehabilitation 3rd Avenue To 6th Avenue Job Number 2550 Computer Drawing Name S:/PW/ENG/JOBS/2550 Date April 2, 2008 By WLC Sheet 8 Of 14				

Construction Stage 1 Traffic Control Signs

(see legend on construction staging sheet)

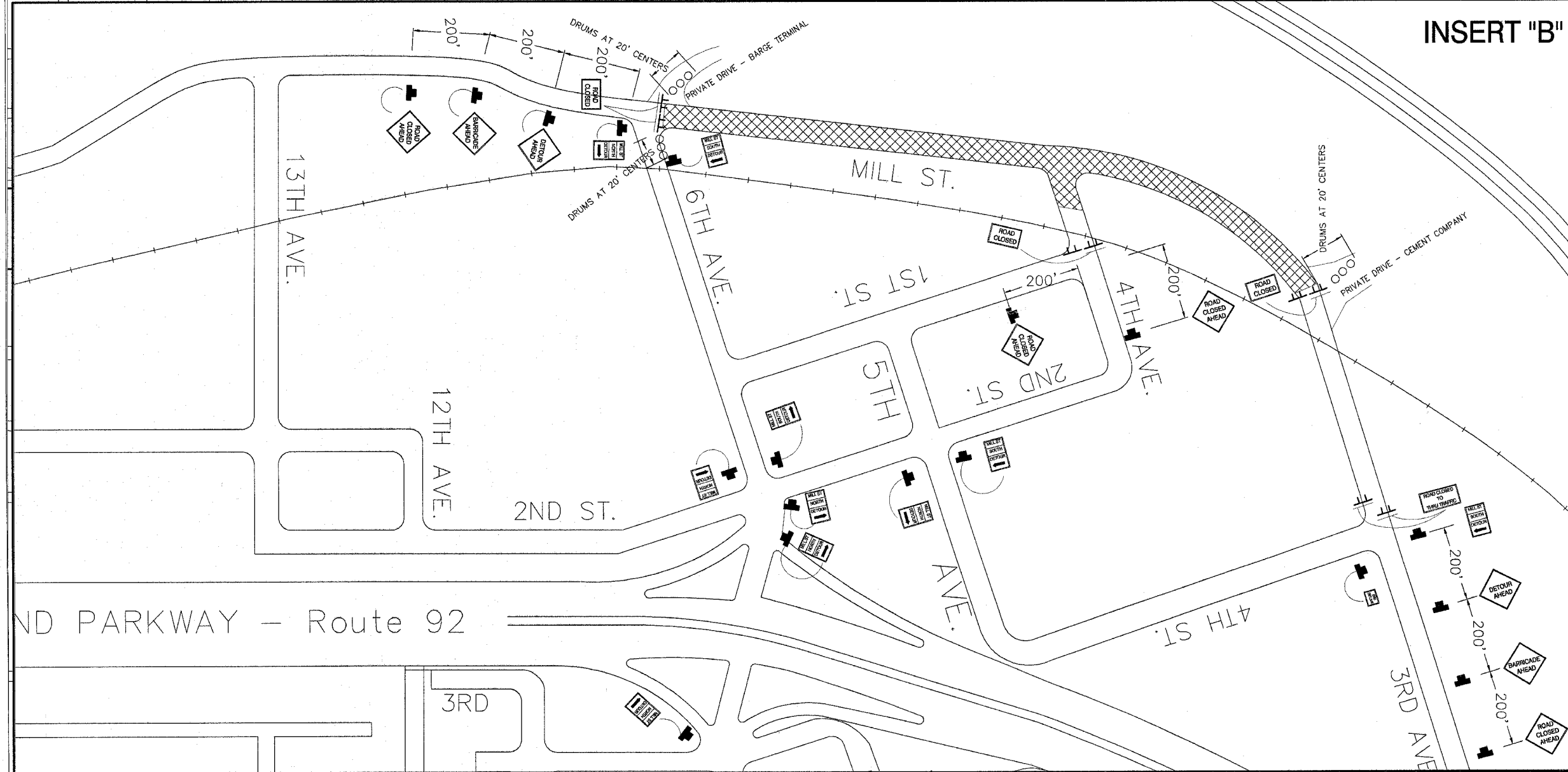
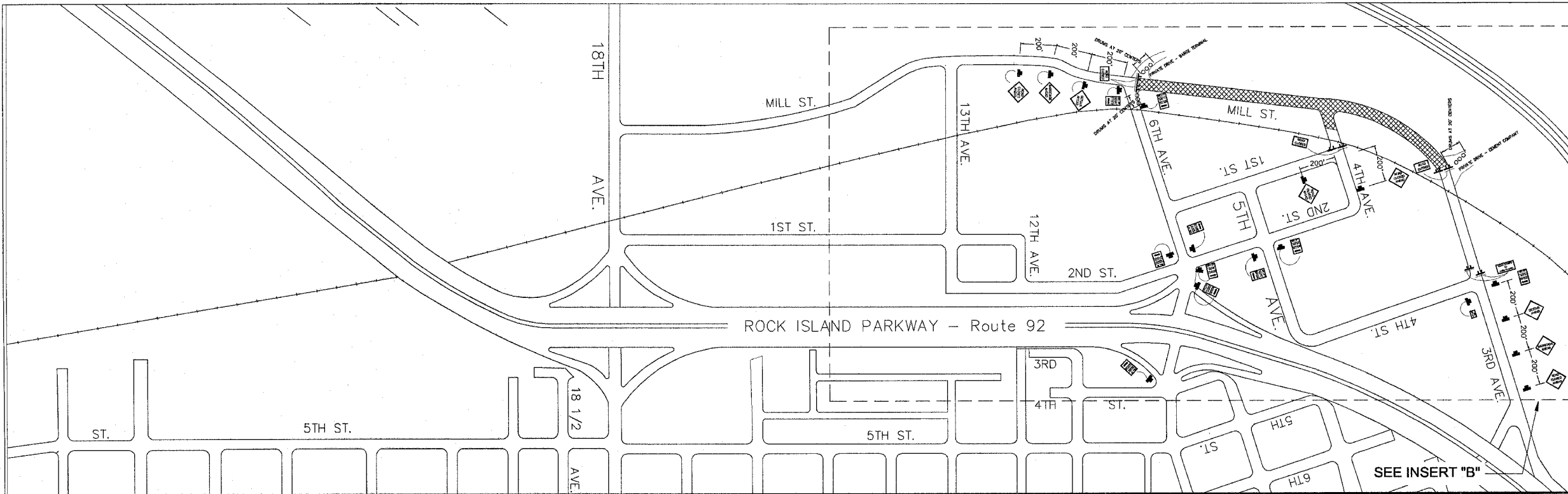


MISSISSIPPI RIVER

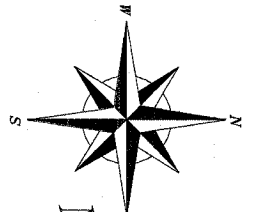
CITY OF ROCK ISLAND ENGINEERING DIVISION	
Mill Street Rehabilitation 3rd Avenue to 6th Avenue	
Job Number 2550	Date March 31, 2008
Computer Drawing Name SPW/Eng/Job/2550	By RAH
	Sheet 9
	Of 14

Construction Stage 2 Traffic Control Signs

(see legend on construction staging sheet)

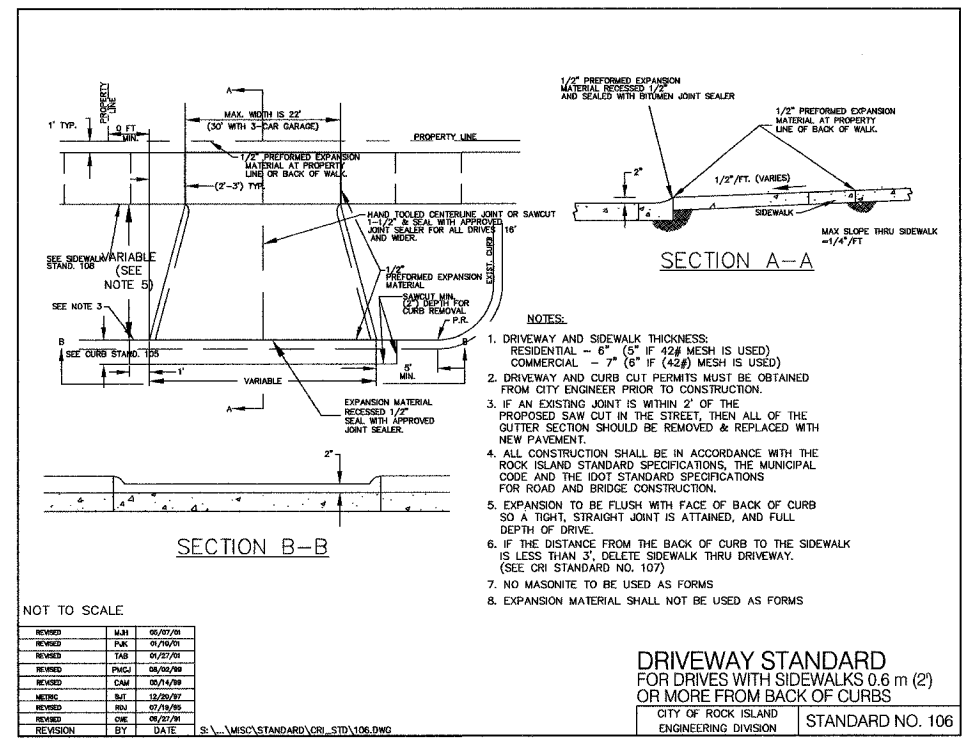
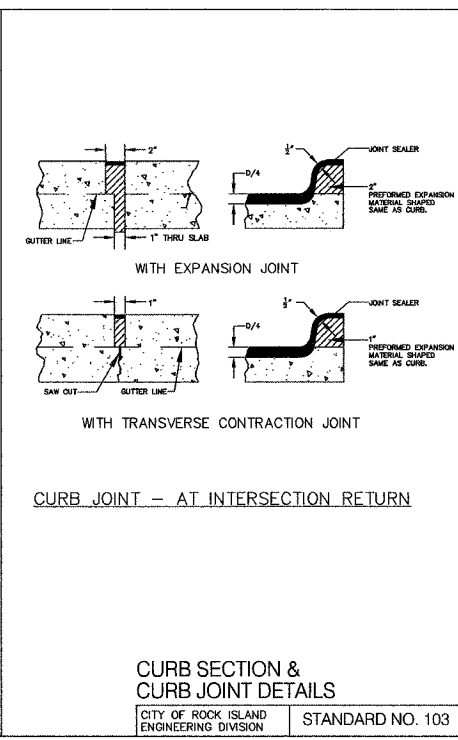
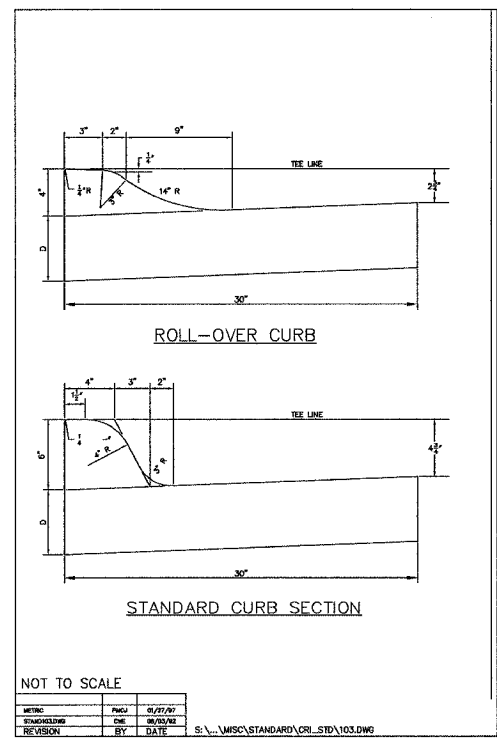
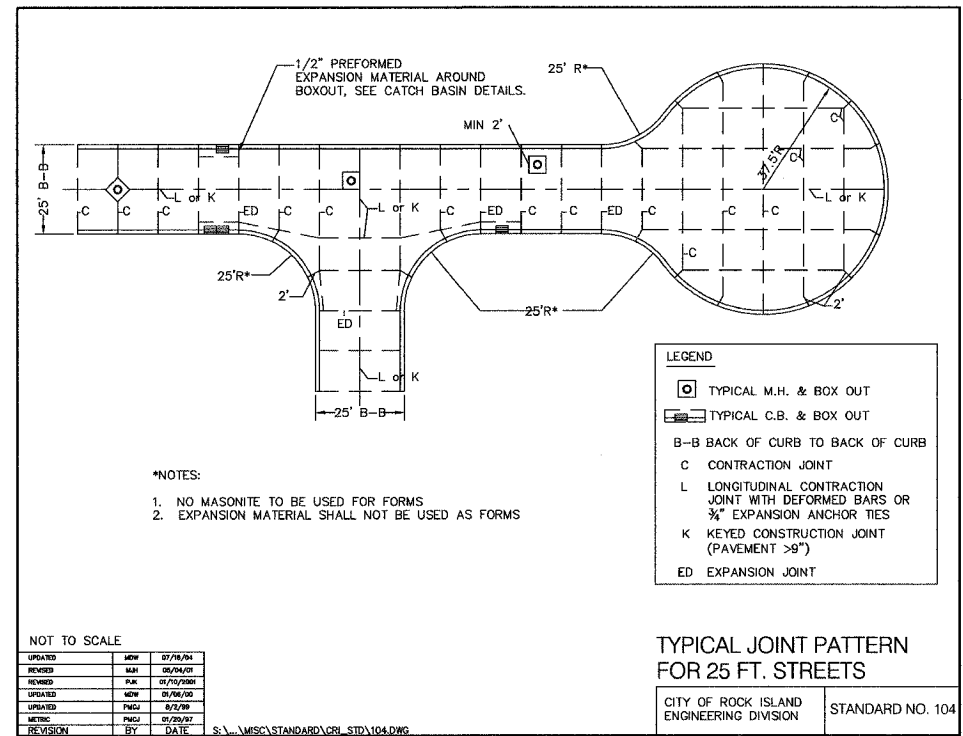
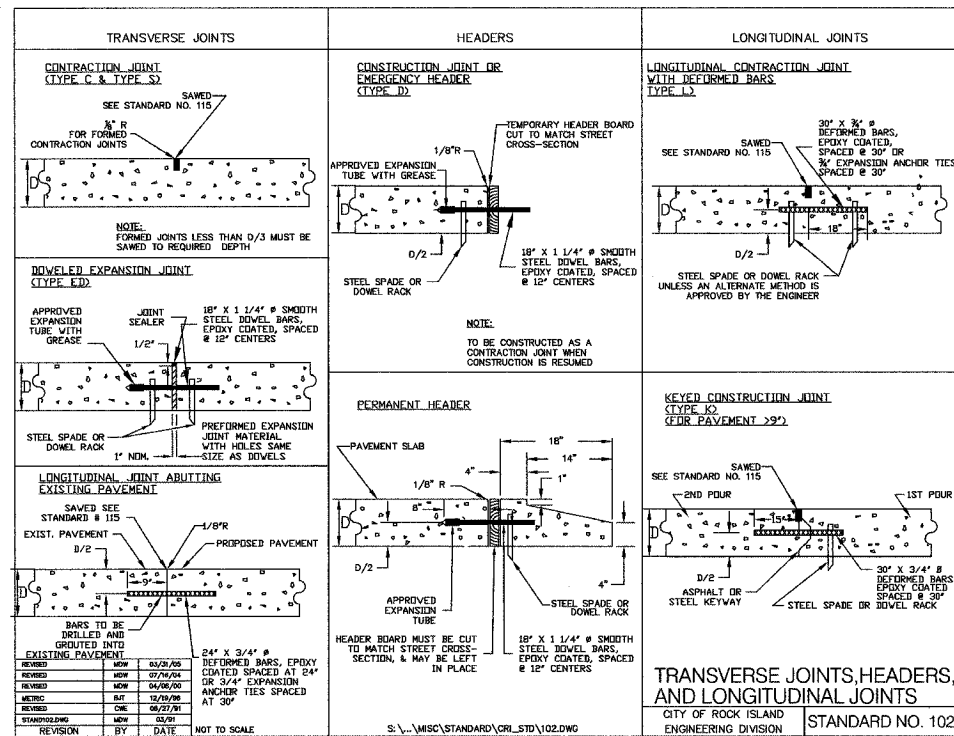


INSERT "B"



MISSISSIPPI RIVER

CITY OF ROCK ISLAND ENGINEERING DIVISION	
Mill Street Rehabilitation 3rd Avenue to 6th Avenue	
Job Number	2550
Computer Drawing Name	S:PW/Eng/Job/2550
Date	March 31, 2008
By	RAH
Sheet	10
Of	14

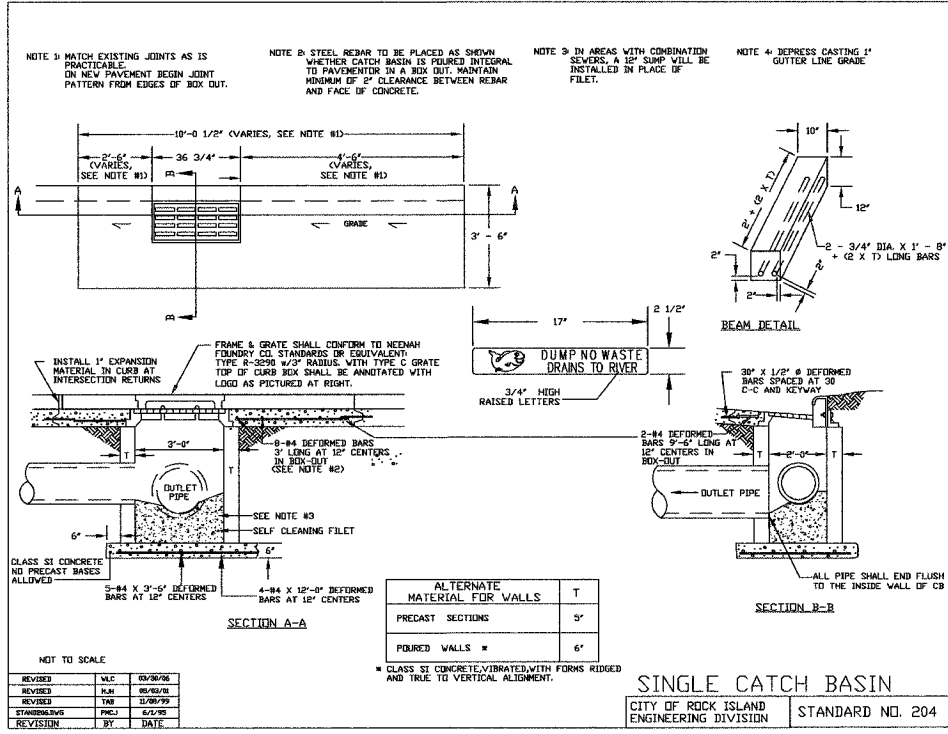
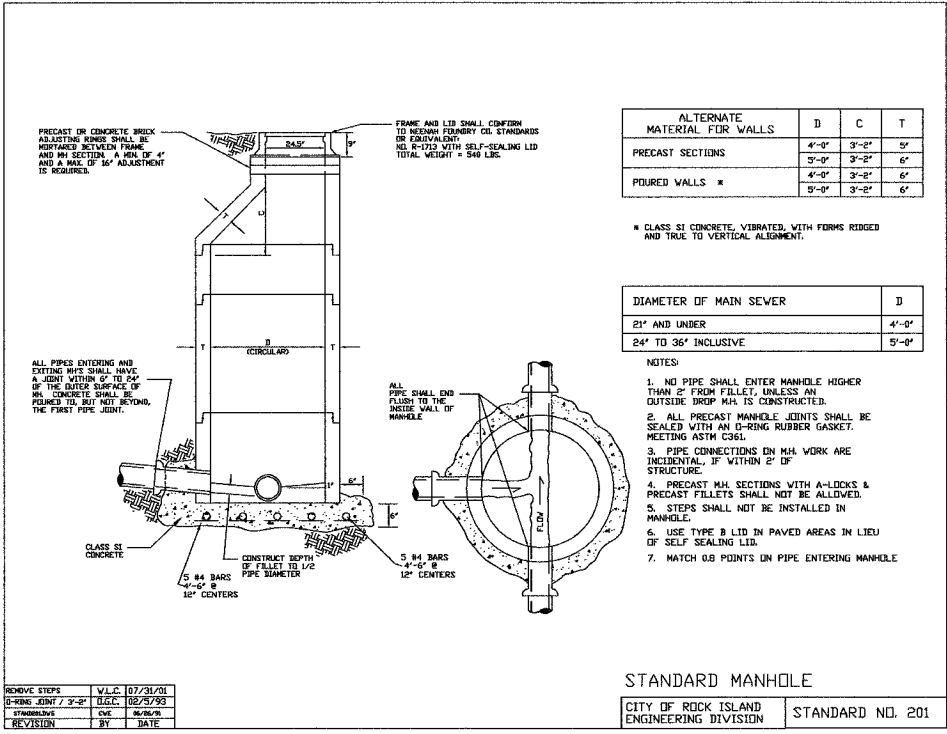
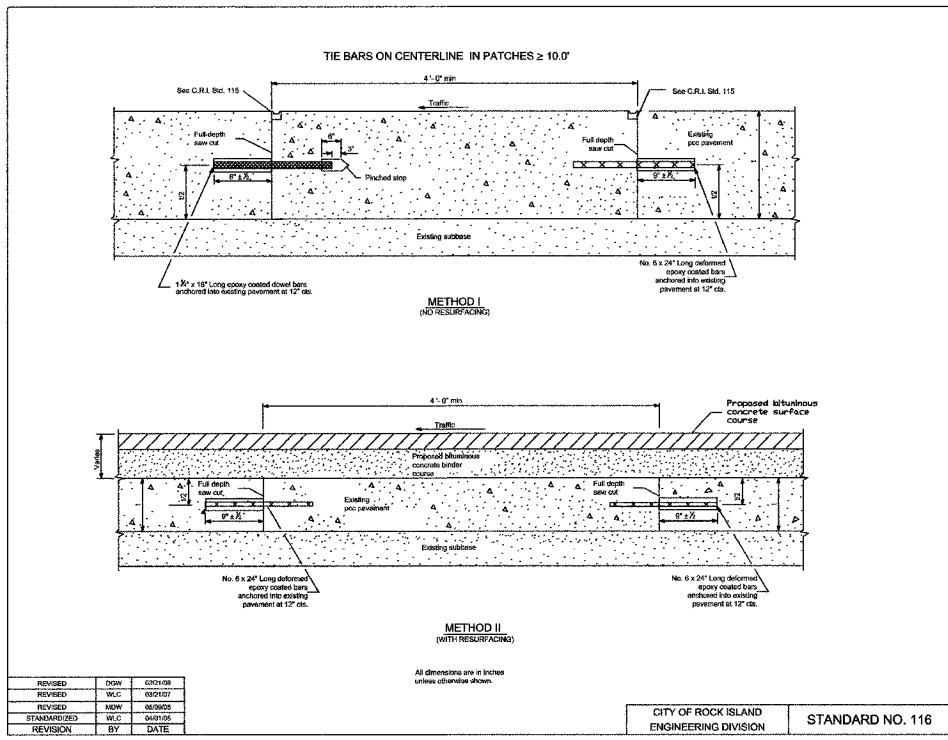
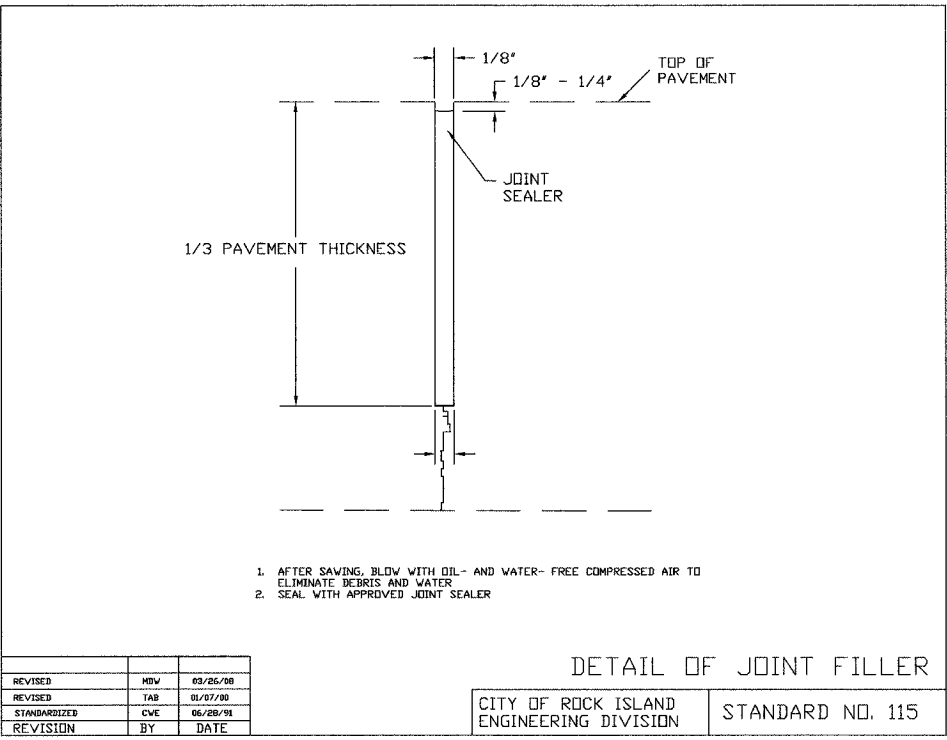


CITY OF ROCK ISLAND ENGINEERING DIVISION

Mill Street Rehabilitation
3rd Avenue To 6th Avenue

Job Number: 2550
 Date: April 2, 2008
 By: WLC

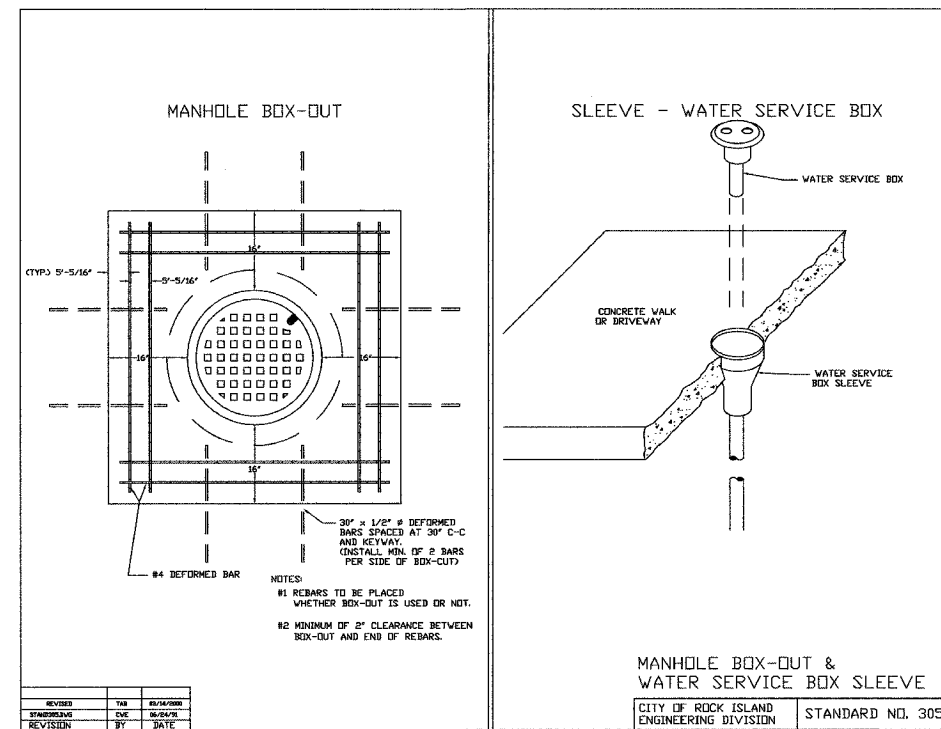
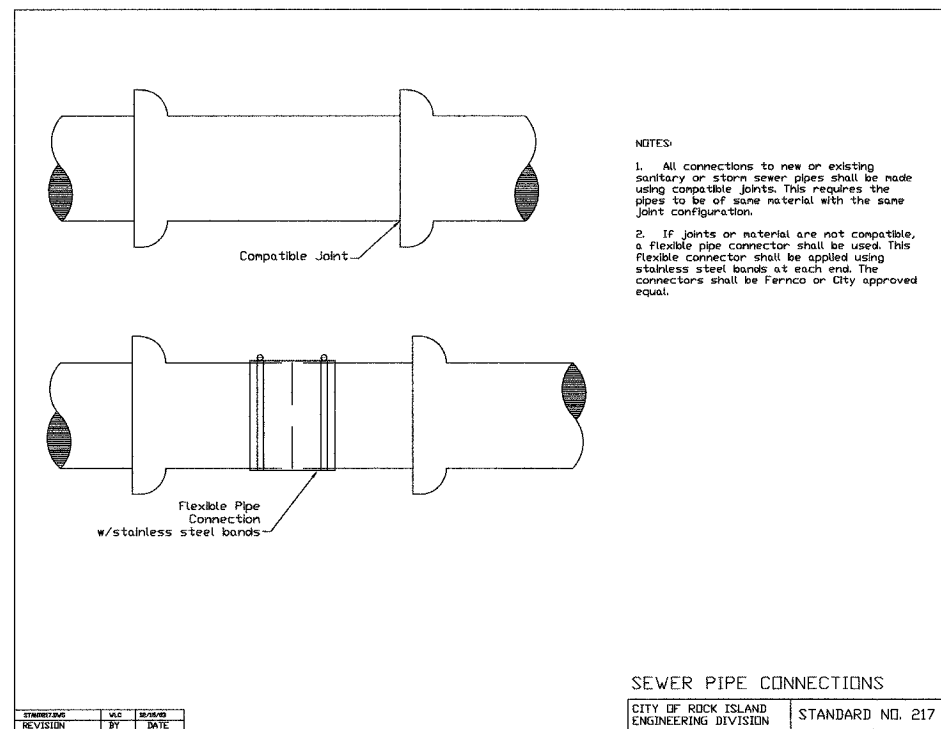
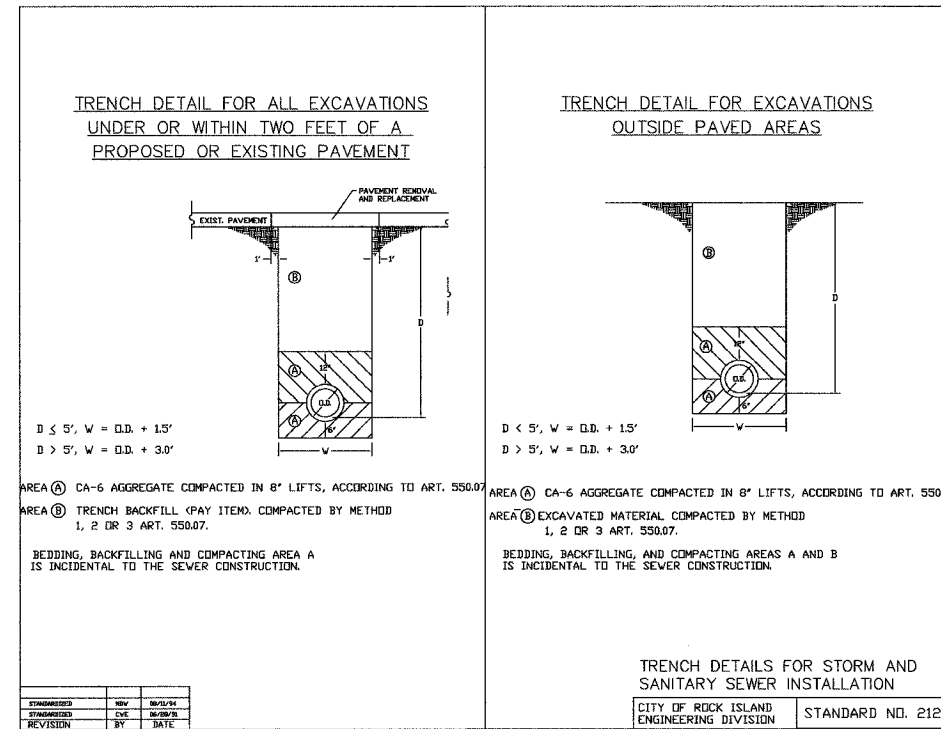
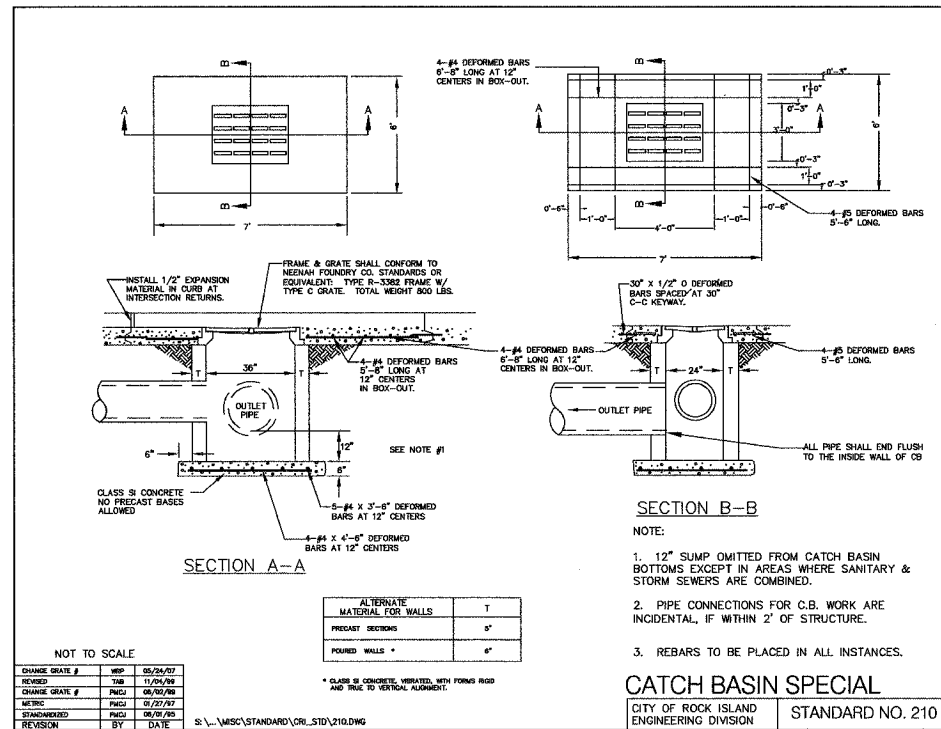
Computer Drawing Name: S:\PW\ENG\JOBS\2550
 Sheet: 11
 Of: 14



**CITY OF ROCK ISLAND
ENGINEERING DIVISION**

Mill Street Rehabilitation
3rd Avenue To 6th Avenue

Job Number	2550	Date	April 2, 2008
Computer Drawing Name	S:/PW/ENG/JOBS/2550	By	WLC
		Sheet	12
		Of	14



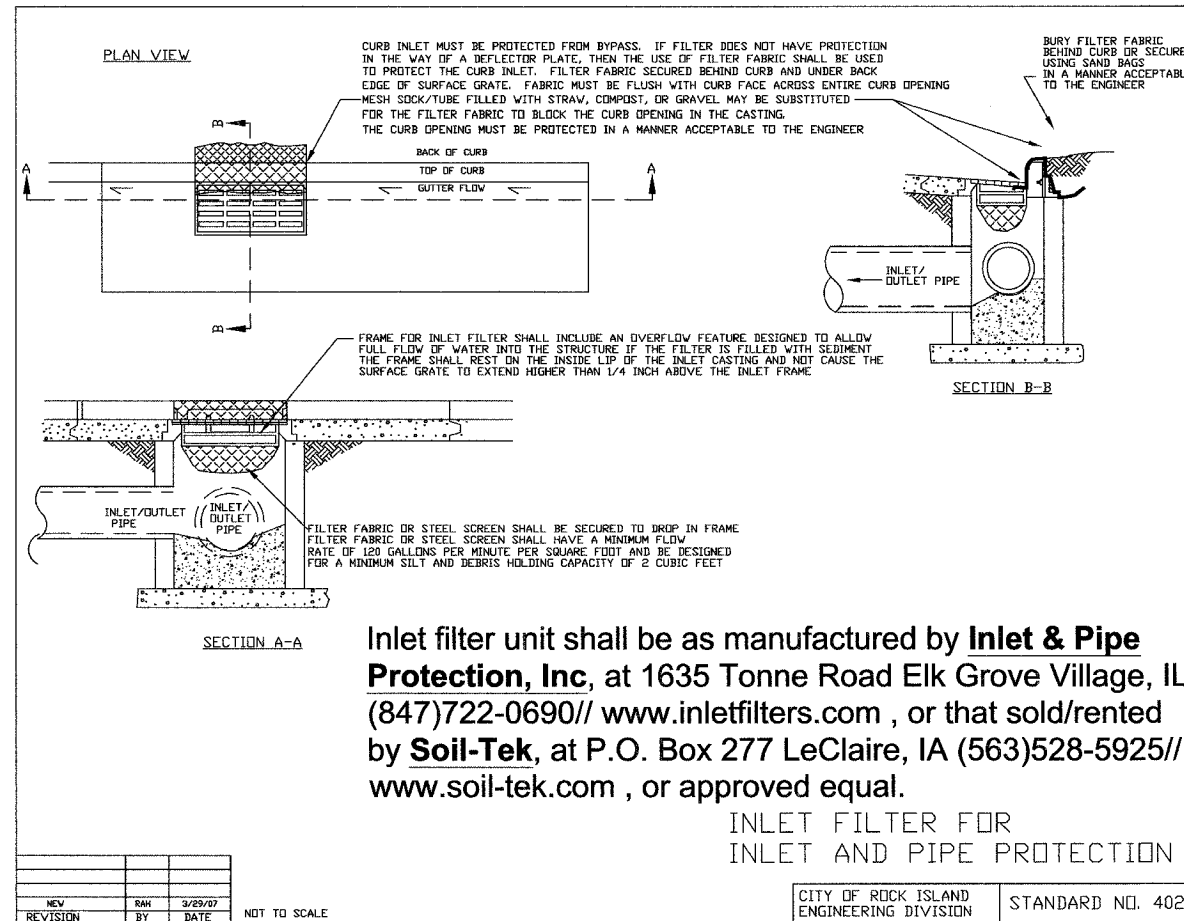
**CITY OF ROCK ISLAND
ENGINEERING DIVISION**

Mill Street Rehabilitation
3rd Avenue To 6th Avenue

Job Number: 2550
Computer Drawing Name: S:/PW/ENG/JOBS/2550

Date: March 19, 2008
By: WLC
Sheet: 13 Of 14

RI
ROCK ISLAND
ILLINOIS



CITY OF ROCK ISLAND ENGINEERING DIVISION			
Mill Street Rehabilitation 3rd Avenue To 6th Avenue			
Job Number	2550	Date	April 2, 2008
Computer Drawing Name	S:/PW/ENG/JOBS/2550	By	WLC
		Sheet	14
		Of	14