

INDEX OF SHEETS

- SHEET 1. COVER SHEET
- SHEET 2. TYPICAL CROSS SECTION, STRUCTURAL DESIGN, BUTT JOINT DETAIL, BITUMINOUS MIXTURE TABLE
- SHEET 3. TYPICAL ENTRANCE DETAIL, MAILBOX DETAILS, SIDE ROAD RETURN, GENERAL NOTES

STANDARDS

- 701301-02 LANE CLOSURE 2 LANE, 2 WAY, SHORT TIME OPERATIONS
- 701306-01 LANE CLOSURE 2 LANE, 2 WAY, SLOW MOVING OPERATIONS - DAY ONLY FOR SPEEDS ≥ 45 MPH
- 701311-02 LANE CLOSURE 2 LANE, 2 WAY, MOVING OPERATIONS - DAY ONLY
- 701901 TRAFFIC CONTROL DEVICES
- 780001-01 TYPICAL PAVEMENT MARKINGS

STATE OF ILLINOIS
DEPARTMENT OF TRANSPORTATION

**PLANS FOR
PROPOSED LOCAL AGENCY IMPROVEMENT
FEDERAL-AID SECONDARY PROJECT**

C.H.17

F.A.S. ROUTE 1352 SECTION 03-00104-00-RS FORD COUNTY

PROJECT RS-1352(107)

JOB NO. C-93-075-04

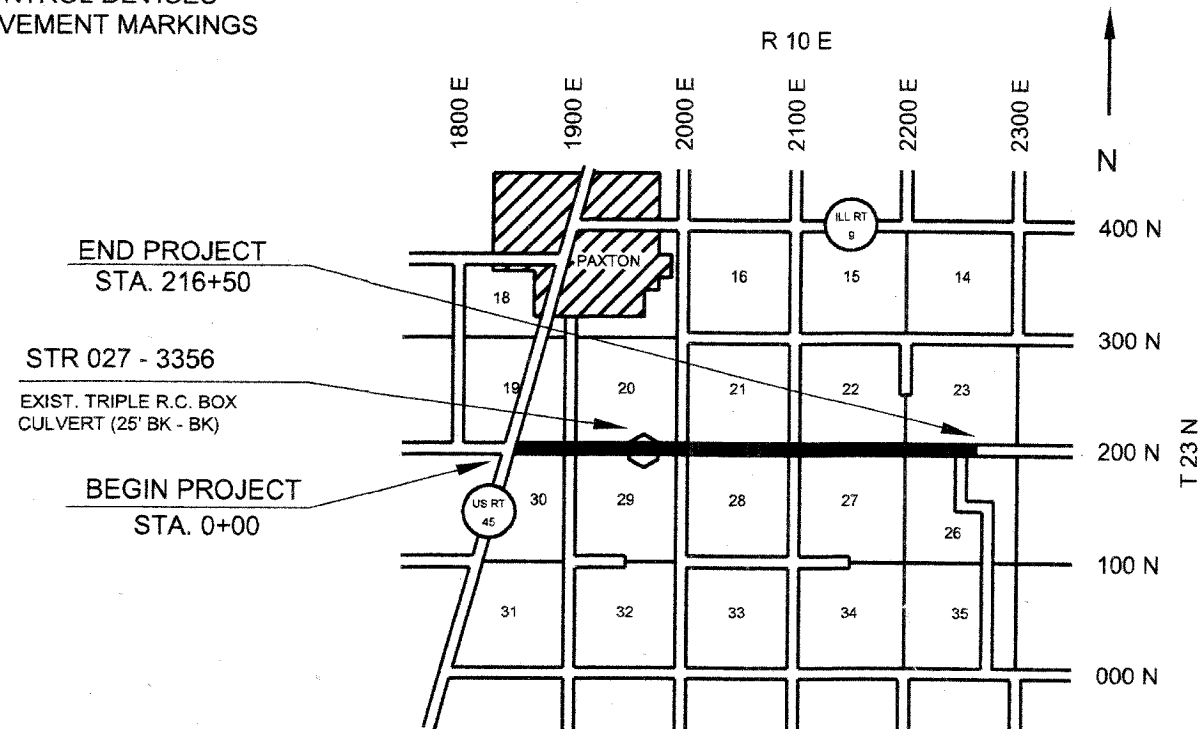
FAS NO	SECTION	COUNTY	TOTAL SHEETS	SHEET NO
1352	03-00104-00-RS		3	1

PROJECT RS - 1352(107)
CONTRACT # 87274

SUMMARY OF QUANTITIES

CODE NO.	ITEM	UNIT	QUANTITY
* 40600100	BITUMINOUS MATERIALS (PRIME COAT)	GALLON	4065
* 40600300	AGGREGATE (PRIME COAT)	TON	55
* 40600982	HOT-MIX ASPHALT SURFACE REMOVAL - BUTT JOINT	SQ YD	245
* 40600990	TEMPORARY RAMP	SQ YD	75
* 40603080	HOT-MIX ASPHALT BINDER COURSE, IL-19.0, N50	TON	7615
* 40603310	HOT-MIX ASPHALT SURFACE COURSE, MIX "C", N50	TON	4500
* 40800050	INCIDENTAL HOT-MIX ASPHALT SURFACING	TON	120
* 48101200	AGGREGATE SHOULDERS, TYPE B	TON	2625
67100100	MOBILIZATION	L SUM	1
* 70100460	TRAFFIC CONTROL AND PROTECTION, STANDARD 701306	L SUM	1
* 70300100	SHORT- TERM PAVEMENT MARKING	FOOT	4330
Δ * 78001110	PAINT PAVEMENT MARKING - LINE 4"	FOOT	16715

* INDICATES SEE SPECIAL PROVISIONS
Δ SPECIALTY ITEM



GROSS LENGTH = 21,650' = 4.10 MI.

NET LENGTH = 21,650' = 4.10 MI.

THE PLANS FOR THIS SECTION WERE APPROVED
BY THE DEPARTMENT AS SECTION 38G & 38Q-FA-1962,
SECTION 83-00052-00-WR & SECTION 03-00104-00-RS
FUNCTIONAL CLASSIFICATION: MAJOR COLLECTOR

UTILITIES

UTILITIES ON THIS SECTION AT VARIOUS LOCATIONS INCLUDES TO THE BEST OF OUR KNOWLEDGE:

VERIZON TELEPHONE COMPANY (UNDERGROUND)
OVERHEAD POWER - AMEREN CIPS
UNDERGROUND GAS - NICOR

CONTRACTORS OR SUBCONTRACTORS SHALL CONTACT J.U.L.I.E. (1-800-892-0123) AT LEAST 72 HOURS PRIOR TO ANY EXCAVATION OR DRIVING FOR UTILITIES LOCATION

JOB NO. C-93-075-04
CONTRACT NO. 87274

Gregory L. Perkinson

ILLINOIS PROFESSIONAL NO. 062-035801

EXPIRES 11-30-2009

CURRENT (2008) ADT = 700 - 88% PC
7% SU
5% MU

DESIGN ADT (2018) = 800

DESIGN SPEED = 50 MPH

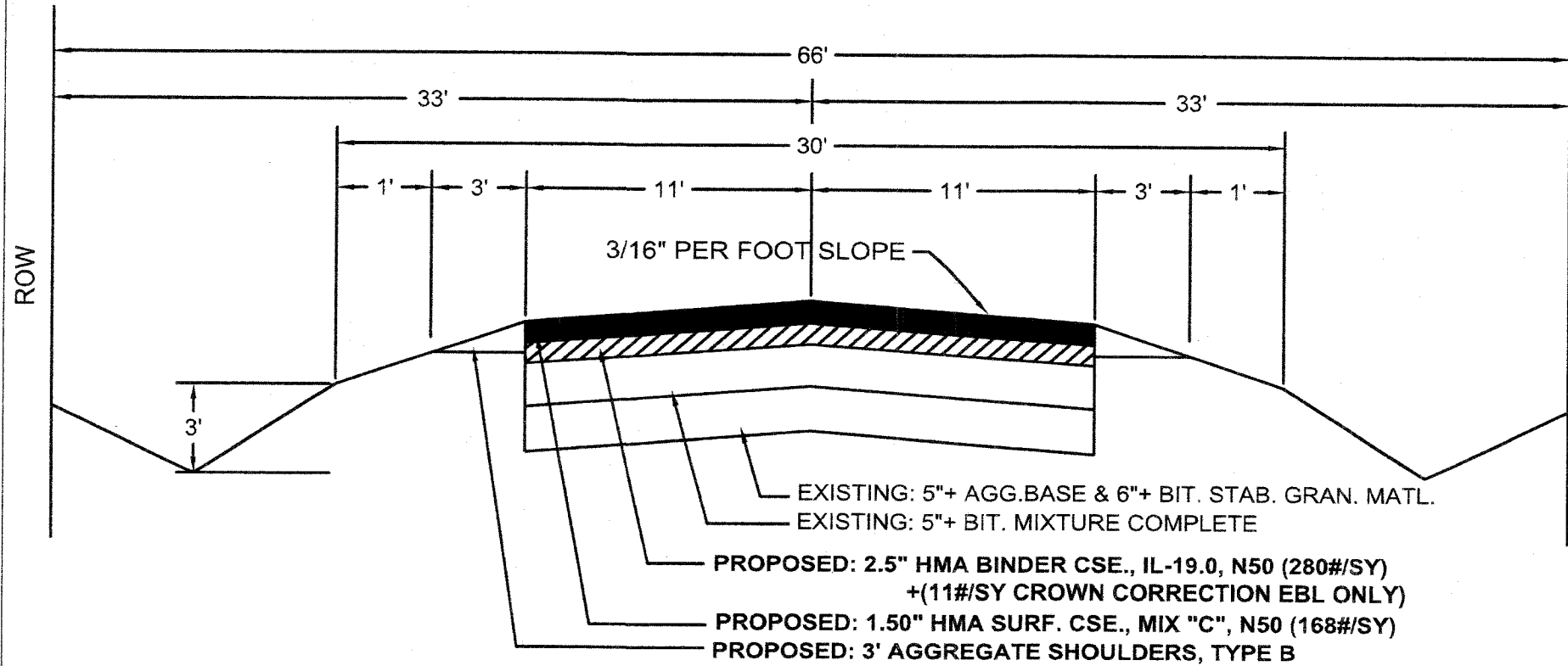
THE ACCEPTANCE OF THIS PROJECT IS BASED ON THE MINIMUM DESIGN CRITERIA UNDER 3R GUIDELINES.



APPROVED	<u>3/26/08</u> <i>Gregory L. Perkinson</i> FORD COUNTY, COUNTY ENGINEER
PASSED	<u>4/4/08</u> <i>Kenneth R. Ly</i> DISTRICT 3 ENGINEER OF LOCAL ROADS & STREETS
Releasing for Bid Based on Limited Review	<u>4/4/08</u> <i>George F. Ryan</i> DEPUTY DIRECTOR OF HIGHWAYS, REGION 2 ENGINEER STATE OF ILLINOIS DEPARTMENT OF TRANSPORTATION

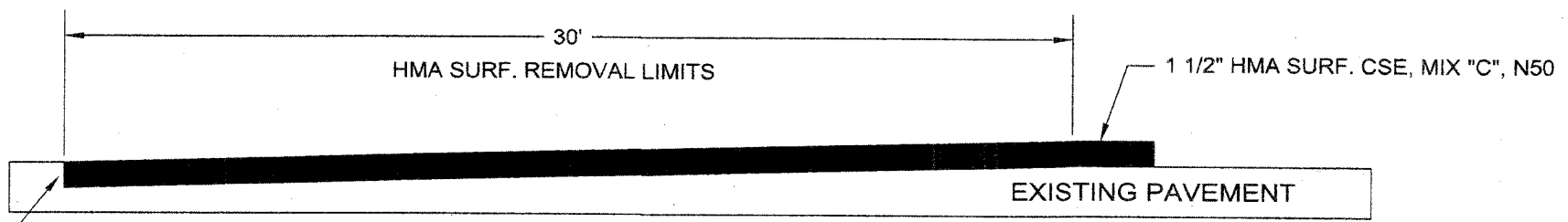
TYPICAL CROSS SECTION
SECTION 03-00104-00-RS (PIT ROAD)
STATION 0+00 TO 216+50

FAS NO	SECTION	COUNTY	TOTAL SHEETS	SHEET NO.
1352	03-00104-00-RS		3	2
PROJECT RS-1352(107)				
CONTRACT # 87274				



STRUCTURAL DESIGN
STA. 0+00 TO STA. 216+50
SEC. 03-00104-00-RS

STRUCTURAL DESIGN TRAFFIC YEAR	2017
CURRENT A.D.T.	700
A.D.T. 2017	800
P.C.	704
S.U.	56
M.U.	40
CLASS	III
MINIMUM SOIL SUPPORT IBV	3
TRAFFIC FACTOR	0.216
Dt REQUIRED	3.30
EXISTING BASE:	
5.0"+ AGGREGATE BASE	5.0" X 0.06 = 0.30
6.0"+ BIT. STAB. GRANULAR MATERIAL	6.0" X 0.09 = 0.54
2.0"+ BIT. MIXTURE COMPLETE	2.0" X 0.17 = 0.34
3.0"+ BIT. MIXTURE COMPLETE	3.0" X 0.23 = 0.69
SUBTOTAL EXISTING	1.87
PROPOSED:	
2.50" HMA BINDER CSE., IL-19.0, N50	2.50" X 0.36 = 0.90
1.50" HMA SURF. CSE., MIX "C", N50	1.50" X 0.36 = 0.54
Dt TOTAL	3.31

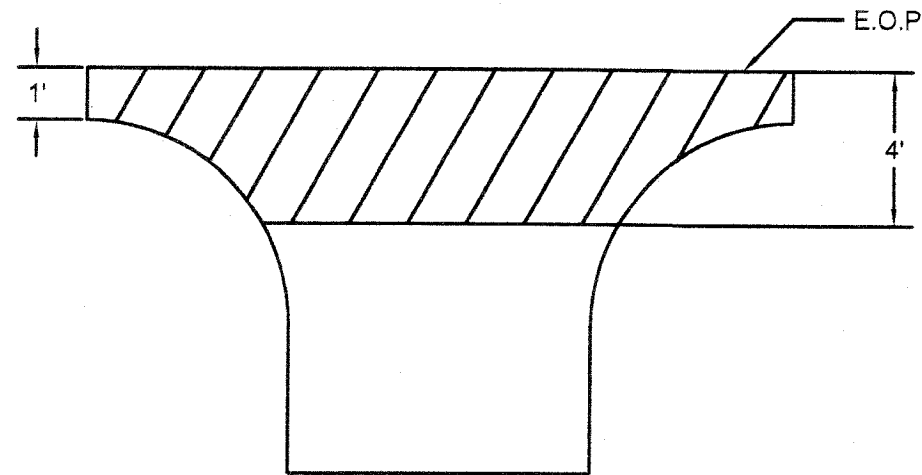


BUTT JOINT DETAIL
2 LOCATIONS
STA. 0+00 TO STA. 0+30
STA. 216+20 TO STA. 216+50

BITUMINOUS MIXTURE TABLE		
	HMA BINDER	HMA SURFACE
PG GRADE	PG 58-22	PG 64-22
MAX. % RAP *	25%	15%
DESIGN AIR VOIDS	4.0 % @ N50	4.0 % @ N50
MIX COMPOSITION	IL-19.0	IL 9.5 or IL 12.5
FRICTION AGGREGATE		MIXTURE "C"
DENSITY CONTROL METHOD	CORRELATION	CORRELATION

* IF RAP PERCENTAGE IS DIFFERENT THAN LISTED ABOVE, THE PG GRADE MAY NEED TO BE ADJUSTED. THIS WILL BE DETERMINED BY THE ENGINEER.

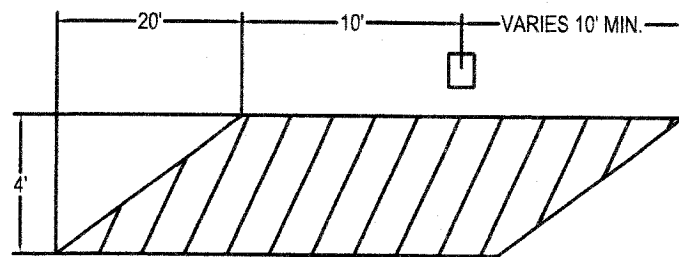
FAS NO	SECTION	COUNTY	TOTAL SHEETS	SHEET NO
1352	03-00104-00-RS		3	3
PROJECT RS- 1352(107)				
CONTRACT # 87274				



TYPICAL FIELD & PRIVATE ENTRANCE

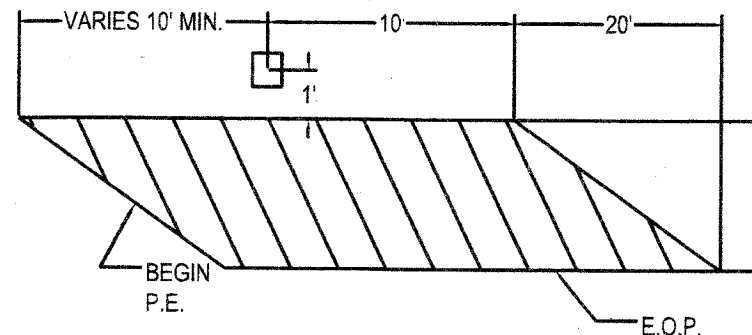
47 EACH

LT. STA.	LT. STA.	RT. STA.	RT. STA.
16+27	114+09	12+95	122+80
17+62	144+09	13+69	123+21
29+53	159+73	31+15	143+09
35+90	161+16	42+06	143+78
42+06	171+42	48+93	148+89
55+55	176+15	53+27	161+56
63+27	179+39	55+55	162+86
80+11	187+33	56+96	164+42
95+40	188+14	62+42	176+15
108+67	196+73	65+13	179+39
		96+97	188+14
		108+37	201+45
		112+96	201+85
		116+41	



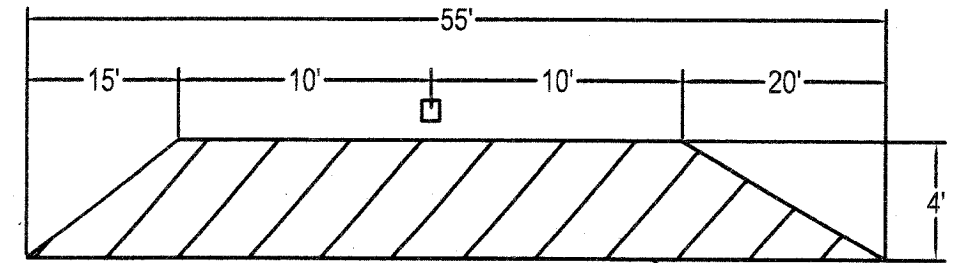
TYPICAL MAILBOX FOLLOWING

2 EACH
STA. 13+85 RT
STA. 123+44 RT



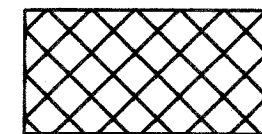
TYPICAL MAILBOX LEAD IN

2 EACH
STA. 122+62 RT
STA. 162+65 RT

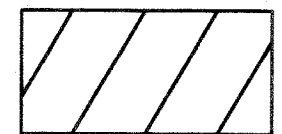


TYPICAL MAILBOX TURN OUT

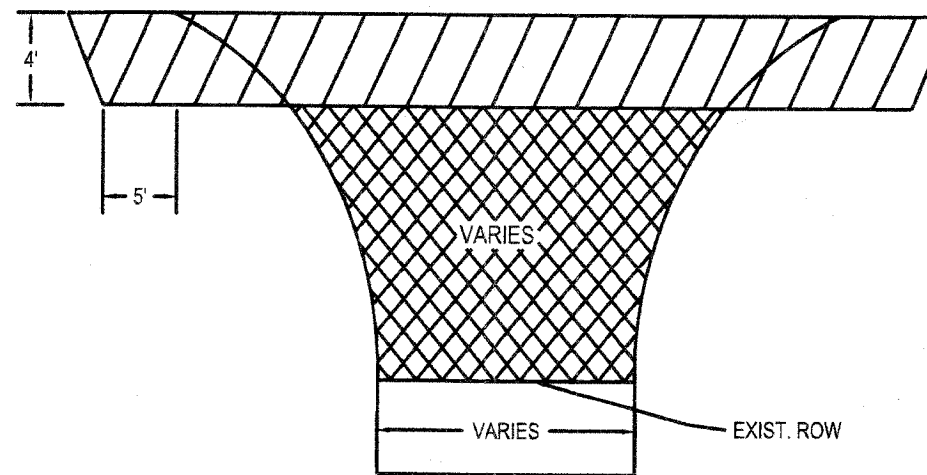
3 EACH
STA. 161+16 RT
STA. 187+12 RT
STA. 187+80 RT



AREA TO BE PAID AS
INCIDENTAL BITUMINOUS SURFACING



AREA TO BE CONSTRUCTED
DURING MAINLINE PAVING OPERATIONS
SLOPE = 3/4" PER FOOT



TYPICAL SIDE ROAD RETURN

8 EACH
STA. 28+55
STA. 81+98
STA. 135+04
STA. 214+96

NOTES

1. USE SAME MAINLINE MATERIAL FOR SIDE ROAD RETURNS, FIELD & PRIVATE ENTRANCES, AND MAILBOXES.
2. AGGREGATE SHOULDERS TO BE PLACED BEHIND SIDE ROAD RETURNS, FIELD & PRIVATE ENTRANCES, AND MAILBOXES AS DIRECTED BY THE ENGINEER.
3. SHORT TERM PAVEMENT MARKINGS TO BE REMOVED BY FORD COUNTY PERSONNEL.
4. THE FOLLOWING APPLICATION RATES HAVE BEEN ASSUMED IN CALCULATING QUANTITIES:

GRANULAR MATERIALS	2.00 TON / CU YD
BIT MATL (PR CT)	0.075 GAL / SQ YD
AGGREGATE (PR CT)	0.001 TON / SQ YD
BIT CONC	112 # / SQ YD / INCH
SHORT TERM PVMT MKING	4 FT / 40 FT OF APPL.