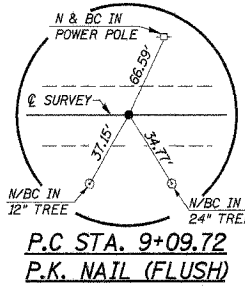


SE 1/4, SECTION 26, T27N, R14W, 2ND P.M.
INEZ C. BRADEN

SW 1/4, SECTION 25, T27N, R14W, 2ND P.M.
SOY CAPITAL AG. SERVICES

ROUTE	SECTION	COUNTY	TOTAL SHEETS	SHEET NO.
T.R. 159	01-11126 -00-BR	IRROQUOIS	23	3
STA. 9+09.72 TO STA. 19+99.66			CONTRACT NO. 87300	
DOUGLAS ROAD DIST., ILLINOIS			BROS-075(128)	

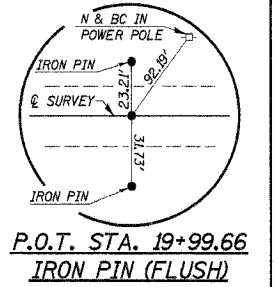
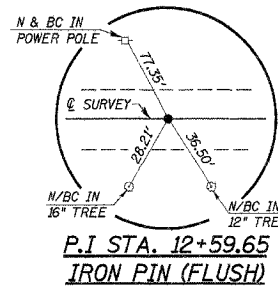


PIPES TO BE REMOVED
LT. STA. 16+90, 12" CMP, 15' LONG
RT. STA. 17+27, 18" CMP, 41' LONG
QUANTITIES INCLUDED IN "EARTH EXCAVATION".

CURVE NO. 1
P.I. STA. 10+09.80
 $\Delta = 5^{\circ}29'59''$ RT.
 $D = 2^{\circ}44'59''$
 $T = 100.08'$
 $R = 2083.62'$
 $L = 200.00'$
 $E = 2.40'$
P.C. STA. 9+09.72
P.T. STA. 11+09.72
NO S.E.

ENTRANCES TO BE BUILT
LT. STA. 16+97, P.E. -0.3%, 24' ROADBED
RT. STA. 17+27, F.E. -4.0%, 24' ROADBED
QUANTITIES INCLUDED IN THOSE LISTED

CHISELED "X" IN CONC. DECK (RESET)
NE COR., NE 1/4, SECTION 35
T27N, R14W, 2ND P.M.
125' LT., STA. 14+87
PERMANENT SURVEY MARKER TO BE SET



P.E. LT. STA. 16+97 W/ MB.
PIPE CULVERTS, CL. D,
TYPE 1, 18", 46' LONG

PK NAIL & BC (FOUND)
NE. COR., NW 1/4, SEC. 36,
T. 27 N., R. 14 W., 2ND P.M.

EXISTING STRUCTURE NO. 038-4030
SINGLE SPAN TRUSS BRIDGE WITH CONCRETE
DECK ON CLOSED CONCRETE ABUTMENTS
WITH WINGWALLS. 121' BK.-BK. ABUTS.,
18'-0" O.-O. DECK; SKEW = 0°
REMOVAL OF EXISTING STRUCTURES = 1 EACH

OVERHEAD POWER
EASTERN ILLINI ELECTRIC COOP.
P.O. BOX 96
PAXTON, IL 60957
BILL HOFFSHNEIDER
217-379-2131 EXT. 155

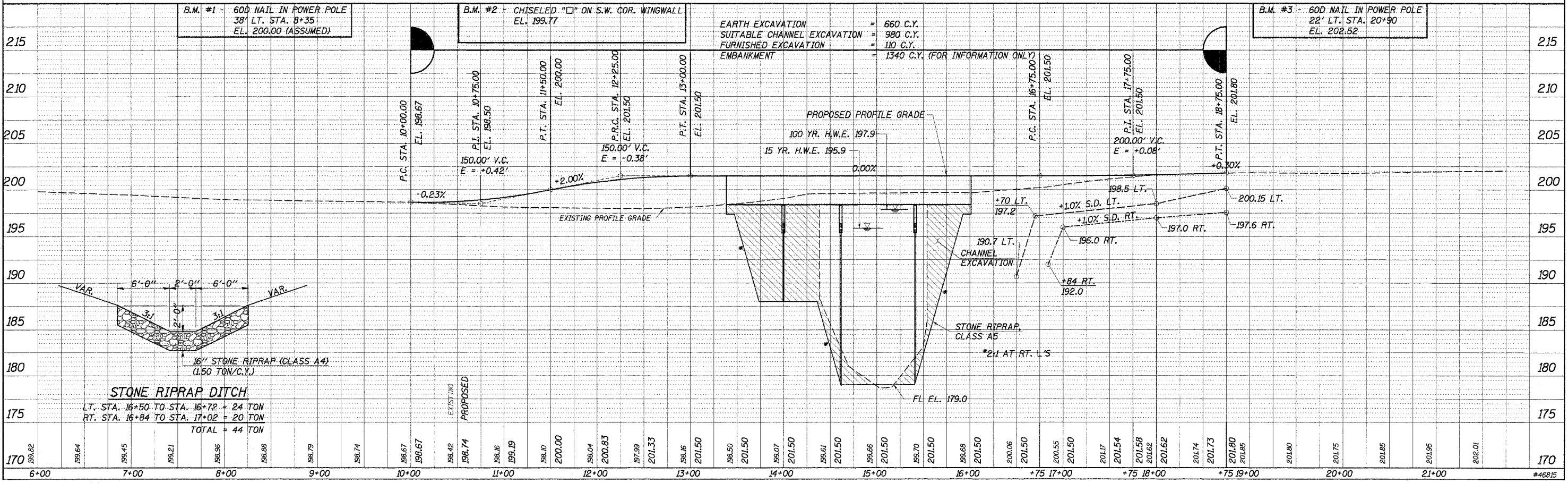
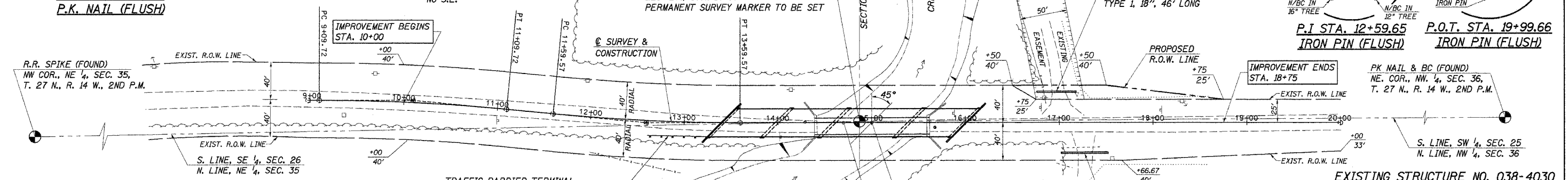
BURIED CABLE
AT&T
65 W. WEBSTER 4TH FLOOR
JOLIET, IL 60432
DAN CHRISTINE
815-727-0575

STEVEN LEMENGER et al
NW 1/4, SECTION 36, T27N, R14W, 2ND P.M.

CHANNEL EXCAVATION
THE CHANNEL SHALL BE EXCAVATED AS SHOWN WITHIN THE
LIMITS OF THE PROPOSED STRUCTURE THEN TAPER TO THE
EXISTING CHANNEL AT THE R.O.W. LINES. SUITABLE
EXCAVATED MATERIAL TO BE USED IN THE EMBANKMENT AS
DIRECTED BY THE ENGINEER.

CHANNEL EXCAVATION = 1960 CU. YD.

JIMMIE L. & MICHAEL S. NIMS
NE 1/4, SECTION 35, T27N, R14W, 2ND P.M.



B.M. #1 - 60D NAIL IN POWER POLE
38' LT. STA. 8+35
EL. 200.00 (ASSUMED)

B.M. #2 - CHISELED "X" ON S.W. COR. WINGWALL
EL. 199.77

B.M. #3 - 60D NAIL IN POWER POLE
22' LT. STA. 20+90
EL. 202.52

EARTH EXCAVATION = 660 C.Y.
SUITABLE CHANNEL EXCAVATION = 980 C.Y.
FURNISHED EXCAVATION = 110 C.Y.
EMBANKMENT = 1340 C.Y. (FOR INFORMATION ONLY)