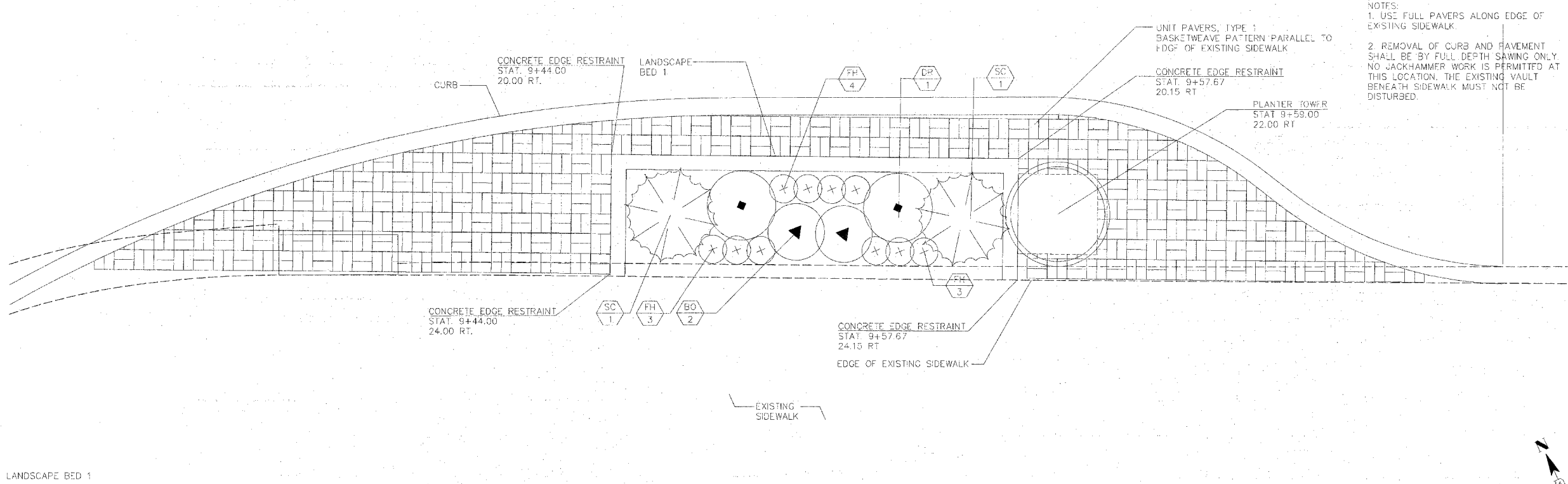




LINCOLN HIGHWAY 38



NOTES:  
 1. USE FULL PAVERS ALONG EDGE OF EXISTING SIDEWALK.  
 2. REMOVAL OF CURB AND PAVEMENT SHALL BE BY FULL DEPTH SAWING ONLY. NO JACKHAMMER WORK IS PERMITTED AT THIS LOCATION. THE EXISTING VAULT BENEATH SIDEWALK MUST NOT BE DISTURBED.

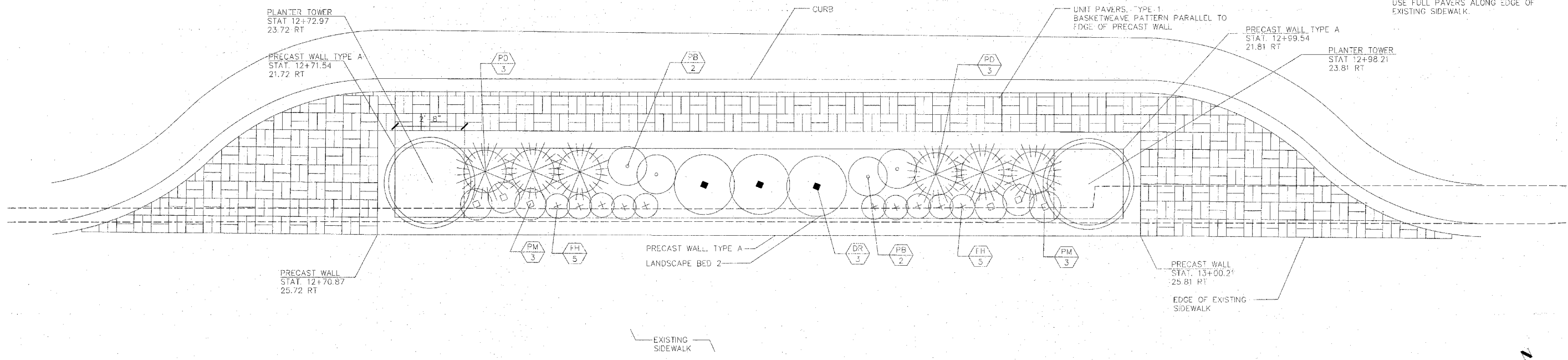
- SHRUB LEGEND
- DJ JUNIPER, DAUB'S FROSTED
  - DR ROSE, DWARF PAVEMENT
  - PR ROSE, PURPLE PAVEMENT
  - SC CYPRESS, SIBERIAN
- PERENNIAL AND GRASS LEGEND
- BO BLUE OAT GRASS
  - FH HEUCHERA, 'FROSTED VIOLET'
  - MC CONEFLOWER, WAGNUS
  - PB DAYLILY, 'PRAIRIE BLUE EYES'
  - PD PRAIRIE DROPS EED
  - PM DAYLILY, 'PARDON ME'
  - WC CATMINT, WALKER'S LOW

LANDSCAPE BED 1

STATIONS: 9+26 TO 9+73 RT

SCALE 1/2"=1'-0"

LINCOLN HIGHWAY 38



NOTE:  
 USE FULL PAVERS ALONG EDGE OF EXISTING SIDEWALK.

LANDSCAPE BED 2

STATIONS: 12+59 TO 13+12 RT

SCALE 1/2"=1'-0"

LAYOUT: SAA 04/08/08  
 DRAWN: SAA 04/09/08  
 REVIEWED: CPS 04/10/08

FILE NAME: -	USER NAME: SAA	DESIGNED: SAA	REVISED: -
I:\06\jobs\051501A\CADD\Road\Sheet\SAA\SP_Sp.dgn		DRAWN: SAA	REVISED: -
	PLOT SCALE: AS SHOWN	CHECKED: CPS	REVISED: -
	PLOT DATE: 04/14/2008 01:52 PM	DATE: 04/10/08	REVISED: -

STATE OF ILLINOIS  
 DEPARTMENT OF TRANSPORTATION

PROPOSED BUMP-OUT LANDSCAPING PLAN  
 EAST LINCOLN HIGHWAY  
 LIGHTING AND STREETScape  
 DEKALB, IL

F.A.P. RTE. 567	SECTION 06-00173-00-LT	COUNTY DEKALB	TOTAL SHEETS 41	SHEET NO. 14
SCALE: AS SHOWN			SHEET NO. OF SHEETS	STA. TO STA.
CONTRACT NO. 87337			ILLINOIS IITP 32025	