

93457

COUNTY	ROUTE	SECTION	TOTAL SHEETS	SHEET NO.
ADAMS	FAS 432	08-00206-00-RS	11	1

INDEX OF SHEETS:

SHEET NO.	SHEET
1	TITLE SHEET
2	SUMMARY OF QUANTITIES
	GENERAL NOTES
3	TYPICAL CROSS SECTIONS
4-10	PLAN SHEETS
11	SIDE ROAD & ENTRANCE DETAILS
	BUTT JOINT DETAIL
STANDARD	701001-01
STANDARD	701006-02
STANDARD	701301-02
STANDARD	701306-01
STANDARD	701901
STANDARD	BLR 24-1

STATE OF ILLINOIS  
DEPARTMENT OF TRANSPORTATION  
DIVISION OF HIGHWAYS  
PLANS FOR PROPOSED

SURFACE TRANSPORTATION/RURAL PROGRAM  
LOCAL AGENCY PAVEMENT PRESERVATION

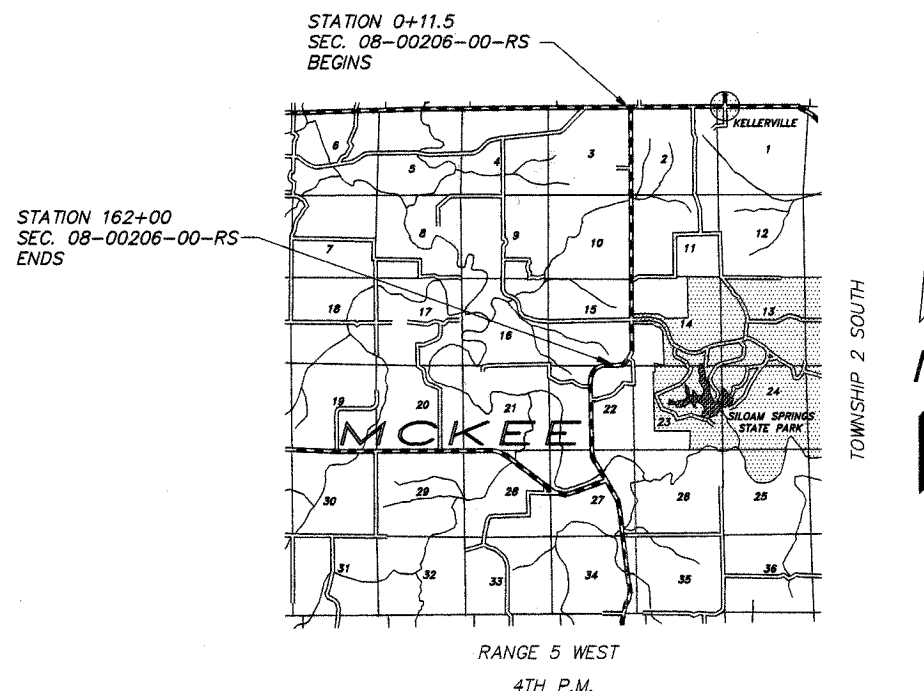
FAS 432 (CH 14) SECTION 08-00206-00-RS ADAMS COUNTY  
PROJECT NO. RS-432(122) JOB NO. C-96-222-08



PROPOSED IMPROVEMENT MARKED THUS —

THESE PLANS WERE PREPARED BY ME OR BY A FULL-TIME MEMBER OF MY STAFF WORKING UNDER MY PERSONAL SUPERVISION.

SUBMITTED BY Richard A. Klemmer DATE 2-26-08  
COUNTY ENGINEER  
LICENSE NO. 062-032961  
LIC. EXPIRES 11/30/2009



LOCATION MAP



FUNCTIONAL CLASS: MAJOR COLLECTOR (NON-URBAN)  
ADT=225

PROPOSED IMPROVEMENT CONSISTS OF PLACING 1 1/2" POLYMERIZED HOT-MIX ASPHALT SURFACE COURSE, MIX "C", N50 OVER 3/4" OF LEVELING BINDER (MACHINE METHOD) N50 ON THE EXISTING 22' ROADWAY WITH OTHER MISCELLANEOUS CONSTRUCTION

UTILITIES:

J.U.L.I.E. \_\_\_\_\_ 1-800-892-0123  
GENERAL TELEPHONE \_\_\_\_\_ QUINCY, IL  
ADAMS RURAL ELECTRICAL CO-OP \_\_\_\_\_ CAMP POINT, IL

GROSS LENGTH:

STA. 0+11.50 TO STA. 162+00.00 = 16,188.50 FT.  
NET LENGTH TO BE IMPROVED: 16,188.50 FT. = 3.066 MILES

APPROVED	<u>February 26<sup>th</sup></u>	2008
	<u>Richard A. Klemmer</u>	COUNTY ENGINEER
PASSED	<u>Feb 31</u>	2008
	<u>W.R.J.</u>	DISTRICT ENGINEER OF CONSTRUCTION
PASSED	<u>APRIL 1<sup>st</sup></u>	2008
	<u>Tom J. J.</u>	DISTRICT ENGINEER OF LOCAL ROADS AND STREETS
RELEASING FOR BID BASED ON LIMITED REVIEW	<u>APRIL 1<sup>st</sup></u>	2008
	<u>Christine M. Reed</u>	DEPUTY DIRECTOR OF HIGHWAYS REGION FOUR ENGINEER

STATE OF ILLINOIS  
DEPARTMENT OF TRANSPORTATION

CONTRACT NO. 93457

ADAMS COUNTY

SECTION 08-00206-00-RS

ROUTE FAS 432 (C.H. 14)