

| ROUTE NO. | SECTION | COUNTY | TOTAL SHEETS | SHEET NO. |
|-----------------------|----------------|-------------------|--------------|-----------|
| # | 04-00001-00-BR | MACOUPIN | 10 | 1 |
| FED. ROAD DIST. NO. 7 | ILLINOIS | FED. AID PROJECT- | | |

*JULIAN AVENUE

STATE OF ILLINOIS
DEPARTMENT OF TRANSPORTATION
DIVISION OF HIGHWAYS
**PLANS FOR PROPOSED
HIGHWAY BRIDGE PROGRAM**

INDEX OF SHEETS

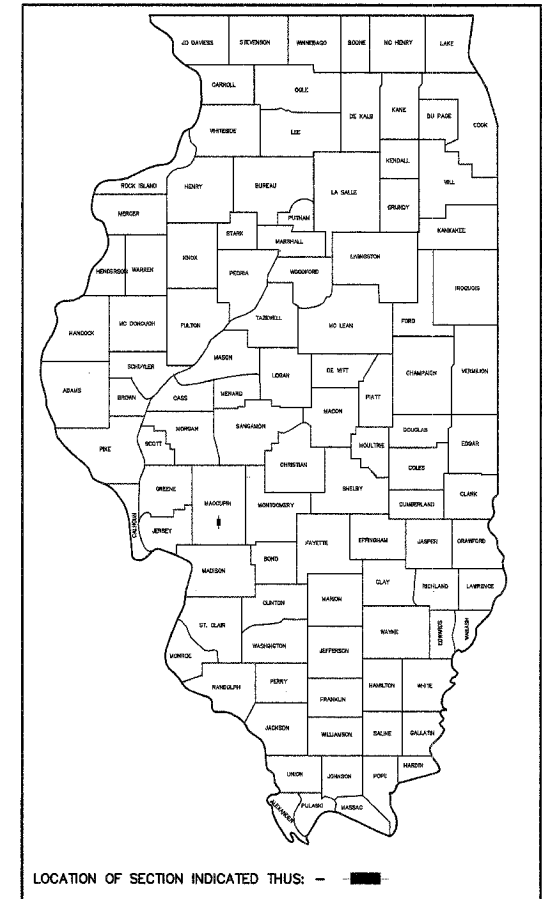
1. COVER SHEET
2. SUMMARY OF QUANTITIES & TYPICAL CROSS SECTION
3. PLAN AND PROFILE
- 4.-7. BRIDGE PLANS
- 8.-10. STATION CROSS SECTIONS

STANDARDS:

- 515001-02 NAME PLATE FOR BRIDGES
- 542301-01 PRECAST REINFORCED CONCRETE FLARED END SECTION
- 635006-02 REFLECTOR AND TERMINAL MARKER PLACEMENT
- 701301-02 LANE CLOSURE, 2L, 2W, SHORT TIME OPERATIONS
- 701901 TRAFFIC CONTROL DEVICES
- BLR 21-7 TYPICAL APPLICATION OF TRAFFIC CONTROL DEVICES FOR CONSTRUCTION ON RURAL LOCAL HIGHWAYS



SECTION 04-00001-00-BR
VILLAGE OF ROYAL LAKES
MACOUPIN COUNTY
PROJECT BROS-117(71)
C-96-223-07

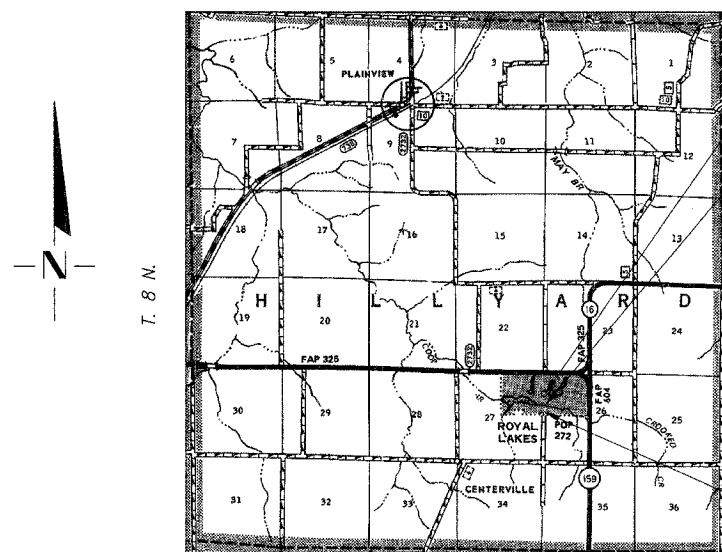


Julian Avenue
R. 8 W., 3rd. P.M.

Improvement Ends
Sta. 12+80

Sta. 9+93 ~ Special Bridge Design
Precast Prestressed Concrete Deck
Beam Bridge. One Span @ 70'-0"
27'-0" Rdwy.; 0' Skew
Proposed Structure No. 059-3444
Replaces Structure No. 059-3144

Improvement Begins
Sta. 7+75



LAYOUT

APPROXIMATE SCALE = 0 [scale bar] 1 MILE
Net Length of Section = 505.00 Feet = 0.096 Miles

UTILITIES

FRONTIER COMMUNICATIONS
225 NORTH BROAD STREET
CARLINVILLE, IL 62626

MJM ELECTRIC COOPERATIVE
P.O. BOX 80
CARLINVILLE, IL 62626

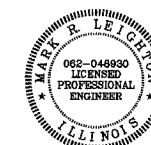
VILLAGE OF ROYAL LAKES WATER DEPT.
549 WEST SHIPMAN ROAD
ROYAL LAKES, IL 62685

DESIGN FUNCTIONAL CLASSIFICATION:
LOCAL ROAD (NON-URBAN) 0-250 ADT
DESIGN TRAFFIC: < 150
DESIGN SPEED: 30 M.P.H.

CONTRACT NO. **93462**

COOMBE-BLOXDORF P.C.
Consulting Engineers • Land Surveyors • Planners
706 South Grand Avenue West, Springfield, Illinois 62704 217/544-8477
Design Firm License No. 184-002703

Mark R. Leighten
ILLINOIS PROFESSIONAL NO. 48930 Expires 11-30-09



APPROVED 3-19 2008
Thomas A Reinhardt
COUNTY ENGINEER

APPROVED 3-19 2008
London Simmons
MAYOR - VILLAGE OF ROYAL LAKES

PASSED APRIL 3 2008
Jim Z...
DISTRICT SIX ENGINEER OF LOCAL ROADS & STREETS

PASSED April 7 2008
[Signature]
DISTRICT SIX ENGINEER OF CONSTRUCTION

Releasing For Bid Based on Limited Review
APRIL 7 2008
Christine M Reed
DEPUTY DIRECTOR OF HIGHWAYS
REGION FOUR ENGINEER
STATE OF ILLINOIS
DEPARTMENT OF TRANSPORTATION

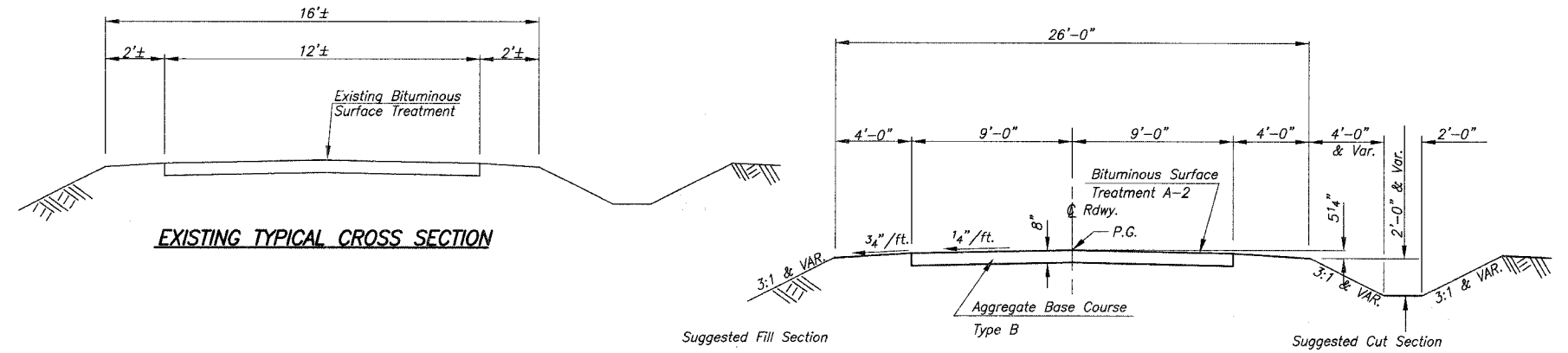
TOLL FREE JOINT UTILITY LOCATING
INFORMATION FOR EXCAVATORS (J.U.L.I.E.)
TELEPHONE NUMBER 1-800-892-0123

| ROUTE NO. | SECTION | COUNTY | TOTAL SHEETS | SHEET NO. |
|-----------------------|----------------|----------|-------------------|-----------|
| # | 04-00001-00-BR | MACOUPIN | 10 | 2 |
| FED. ROAD DIST. NO. 7 | | ILLINOIS | FED. AID PROJECT- | |

*JULIAN AVENUE

| SUMMARY OF QUANTITIES CONSTRUCTION TYPE CODE X081-2.A | | | |
|--|--|--------|----------|
| CODE NO. | ITEM | UNIT | QUANTITY |
| 20200100 | EARTH EXCAVATION | CU YD | 155 |
| 20300100 | CHANNEL EXCAVATION | CU YD | 210 |
| 20400800 | * FURNISHED EXCAVATION | CU YD | 445 |
| 25001000 | * SEEDING CLASS 2 (SPECIAL) | ACRE | 0.5 |
| 28101700 | * RIPRAP, SPECIAL | TON | 124 |
| 35101400 | AGGREGATE BASE COURSE, TYPE B | TON | 551 |
| 40300100 | BITUMINOUS MATERIALS (PRIME COAT) | GALLON | 483 |
| 40300300 | BITUMINOUS MATERIALS (COVER AND SEAL COATS) | GALLON | 966 |
| 40300500 | COVER COAT AGGREGATE | TON | 16 |
| 40300600 | SEAL COAT AGGREGATE | TON | 16 |
| 50100100 | REMOVAL OF EXISTING STRUCTURES | EACH | 1 |
| 50300225 | CONCRETE STRUCTURES | CU YD | 20.7 |
| 50300280 | CONCRETE ENCASEMENT | CU YD | 2.8 |
| 50400505 | PRECAST PRESTRESSED CONCRETE DECK BEAMS, (27" DEPTH) | SQ FT | 1,890 |
| 50800105 | REINFORCEMENT BARS | POUND | 3,360 |
| 50900205 | STEEL RAILING, TYPE S1 | FOOT | 140 |
| 51201400 | FURNISHING STEEL PILES HP 10X42 | FOOT | 225 |
| 51202305 | DRIVING PILES | FOOT | 225 |
| 51203400 | TEST PILE STEEL HP 10X42 | EACH | 2 |
| 51500100 | NAME PLATES | EACH | 1 |
| 54200439 | PIPE CULVERTS, TYPE 1, RCCP, 24" | FOOT | 44 |
| 54200220 | PIPE CULVERTS, CLASS D, TYPE 1 15" (CSCP) | FOOT | 50 |
| 54213669 | PRECAST REINFORCED CONCRETE FLARED END SECTIONS 24" | EACH | 2 |
| 67100100 | MOBILIZATION | L SUM | 1 |
| 70101700 | * TRAFFIC CONTROL AND PROTECTION | L SUM | 1 |
| 78201000 | * TERMINAL MARKER-DIRECT APPLIED | EACH | 4 |

* SEE SPECIAL PROVISIONS

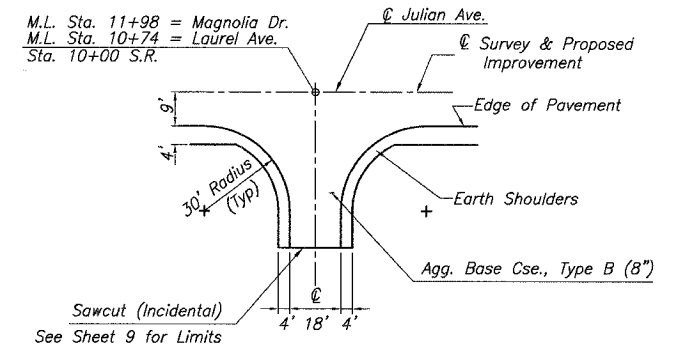


Road Classification: Local Road ADT 0-250
Current ADT 150

PROPOSED TYPICAL CROSS SECTION

Sta. 8+25 to Sta. 12+30

Transition from the proposed roadway to the existing roadway to be constructed from Sta. 7+75 to 8+25 and from Sta. 12+30 to 12+80. See sheet 4 for transition at the bridge.



INTERSECTION DETAIL

Magnolia Drive
Laurel Avenue

GENERAL NOTES

WHERE SECTION AND SUBSECTION MONUMENTS ARE ENCOUNTERED, THE ENGINEER SHALL BE NOTIFIED BEFORE SUCH MONUMENTS ARE REMOVED. THE CONTRACTOR SHALL PROTECT AND CAREFULLY PRESERVE ALL PROPERTY MARKS AND MONUMENTS UNTIL THE OWNER, AN AUTHORIZED SURVEYOR OR AGENT HAS WITNESSED OR OTHERWISE REFERENCED THEIR LOCATION.

THE AREA TO BE SEEDED SHALL CONSIST OF ALL DISTURBED EARTH SURFACES WITHIN THE RIGHT OF WAY AND EASEMENTS AS DIRECTED BY THE ENGINEER.

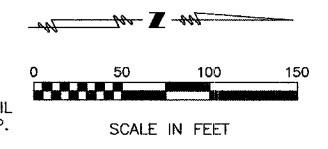
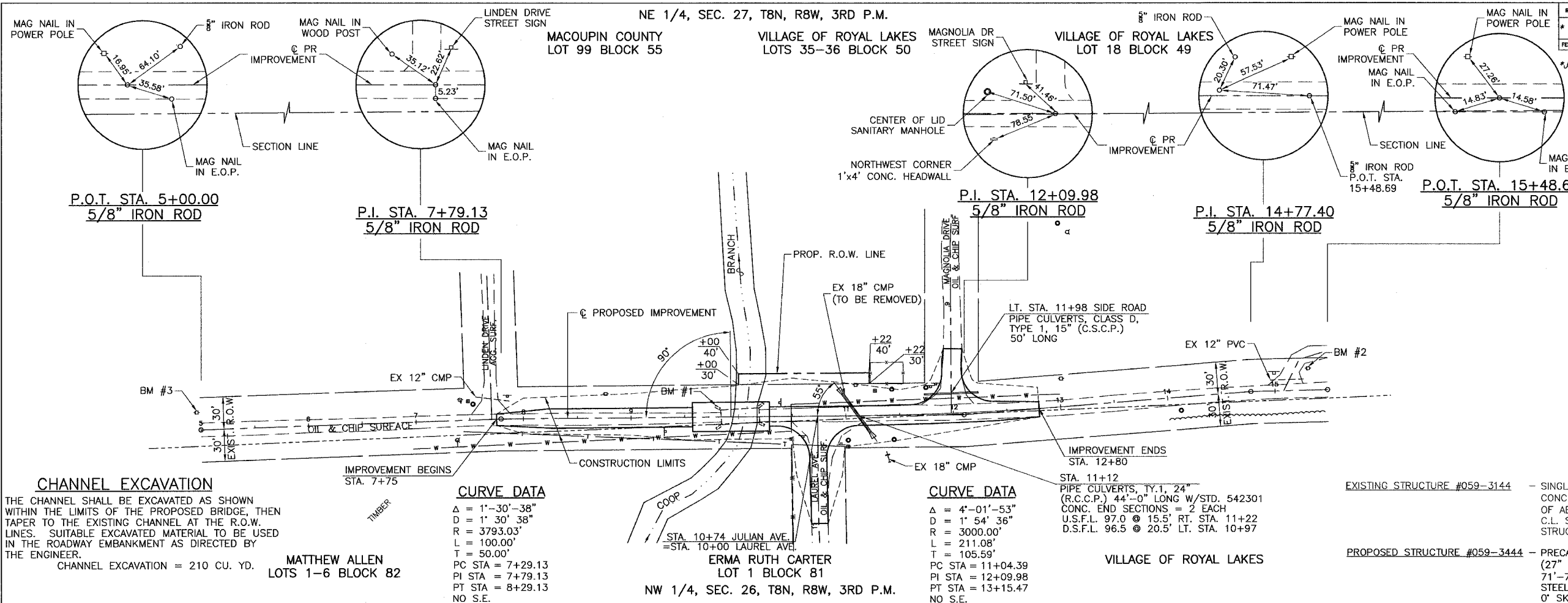
SEEDING, CLASS 2 (SPECIAL) = 0.5 ACRES

THE COST OF REMOVAL OF ANY OBSTRUCTIONS OR CULVERTS NOT OTHERWISE INCLUDED IN REMOVAL OF EXISTING STRUCTURES WHICH INTERFERE WITH CONSTRUCTION WILL BE CONSIDERED INCIDENTAL TO THE COST OF EARTH EXCAVATION.

ALL PLAN ELEVATIONS REPRESENT ASSUMED DATUM.

| | | | |
|---|---|---|---------|
| SHEET TITLE | | SUMMARY OF QUANTITIES & TYPICAL CROSS SECTION | |
| PROJECT | SECTION 04-00001-00-BR VILLAGE OF ROYAL LAKES MACOUPIN COUNTY STATION 9+93 | PROJECT NO. | 06012 |
| | | SCALE | 1-30-08 |
| | | DATE | 1-30-08 |
| | | DRAWN BY | MRL |
| | | CHECKED BY | MCB |
| COOMBE-BLOXDORF P.C. Engineers / Land Surveyors Springfield, Illinois Design Firm License No. 184-002703 | | DRAWING NO. | 2 |
| | | OF 10 | SHTS |

| ROUTE NO. | SECTION | COUNTY | TOTAL SHEETS | SHEET NO. |
|-----------------------|---------|----------|-------------------|-----------|
| 04-0001-00-BR | | MACOUPIN | 10 | 3 |
| FED. ROAD DIST. NO. 7 | | ILLINOIS | FED. AID PROJECT- | |



LEGEND

- SET IRON PIN
- △ SET MAG NAIL
- MANHOLE
- ⊞ TELEPHONE SPLICE BOX
- ⊞ POWER POLE
- ⊞ SIGN
- ⊞ FIRE HYDRANT
- GUY WIRE
- BURIED TELEPHONE LINE
- WATER MAIN
- STREAM
- EDGE OF TIMBER

CHANNEL EXCAVATION

THE CHANNEL SHALL BE EXCAVATED AS SHOWN WITHIN THE LIMITS OF THE PROPOSED BRIDGE, THEN TAPER TO THE EXISTING CHANNEL AT THE R.O.W. LINES. SUITABLE EXCAVATED MATERIAL TO BE USED IN THE ROADWAY EMBANKMENT AS DIRECTED BY THE ENGINEER.

CHANNEL EXCAVATION = 210 CU. YD. **MATTHEW ALLEN**
LOTS 1-6 BLOCK 82

CURVE DATA

Δ = 1°-30'-38"
D = 1' 30" 38"
R = 3793.03'
L = 100.00'
T = 50.00'
PC STA = 7+29.13
PI STA = 7+79.13
PT STA = 8+29.13
NO S.E.

CURVE DATA

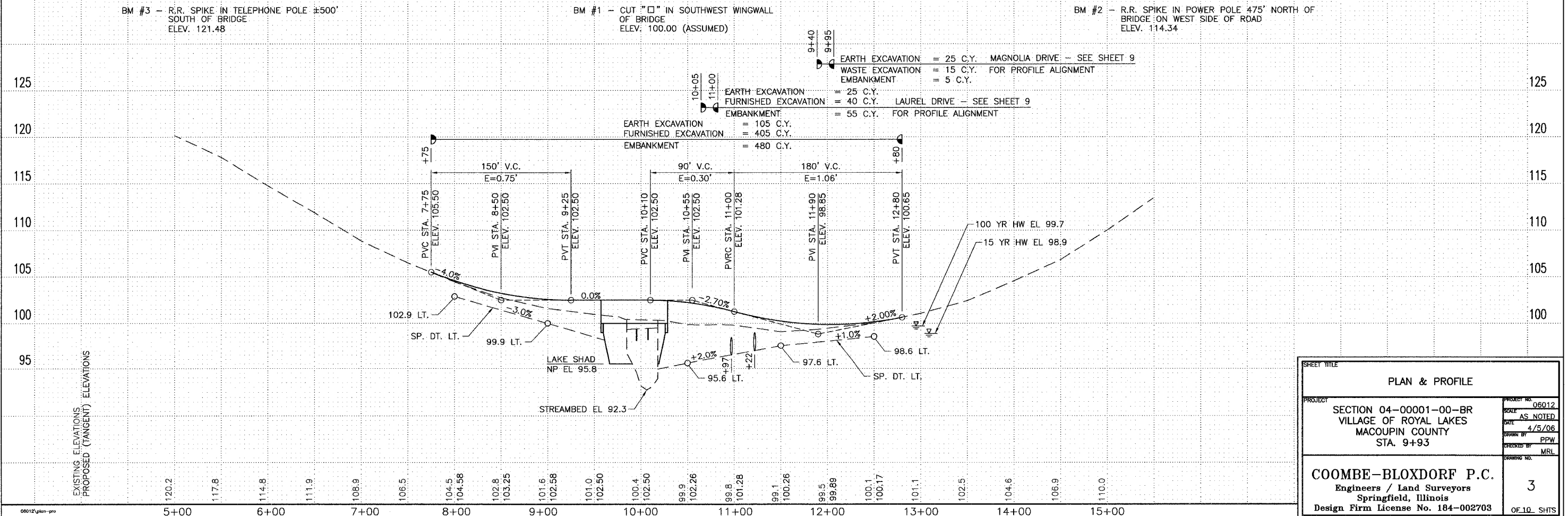
Δ = 4°-01'-53"
D = 1' 54' 36"
R = 3000.00'
L = 211.08'
T = 105.59'
PC STA = 11+04.39
PI STA = 12+09.98
PT STA = 13+15.47
NO S.E.

EXISTING STRUCTURE #059-3144

SINGLE SPAN STEEL PONY TRUSS ON CLOSED CONCRETE ABUTMENTS AND WINGS, 33.8' FC-FC OF ABUTMENTS, 14.2' O-O DECK, 0' SKEW. C.L. STA. 10+01.6 REMOVAL OF EXISTING STRUCTURE: 1 EACH

PROPOSED STRUCTURE #059-3444

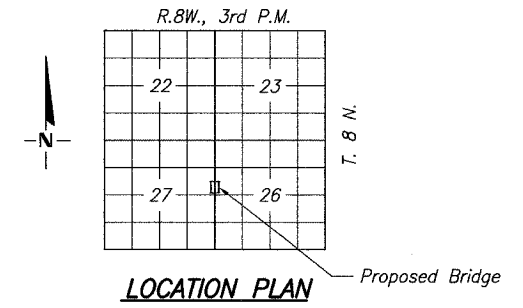
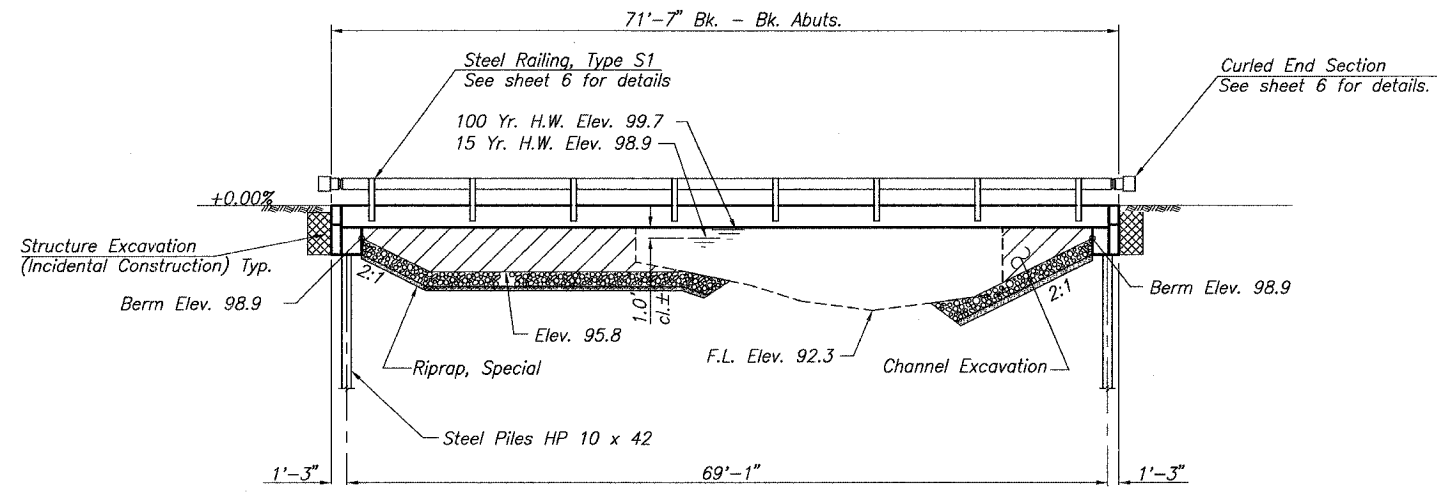
PRECAST PRESTRESSED CONCRETE DECK BEAMS (27" DEPTH), ONE SPAN @ 70'-0" 71'-7" BK-BK ABUTS, 27'-0"(MIN) O-O DECK, STEEL RAILING TY S-1, SPILL THRU ABUTMENTS, 0' SKEW, CL STA. 9+93.00



| | |
|--|--|
| PLAN & PROFILE | |
| PROJECT SECTION 04-0001-00-BR VILLAGE OF ROYAL LAKES MACOUPIN COUNTY STA. 9+93 | PROJECT NO. 06012 SCALE AS NOTED DATE 4/5/06 DRAWN BY PPW CHECKED BY MRL |
| COOMBE-BLOXDORF P.C. Engineers / Land Surveyors Springfield, Illinois Design Firm License No. 184-002703 | |
| 3 | OF 10 SHTS |

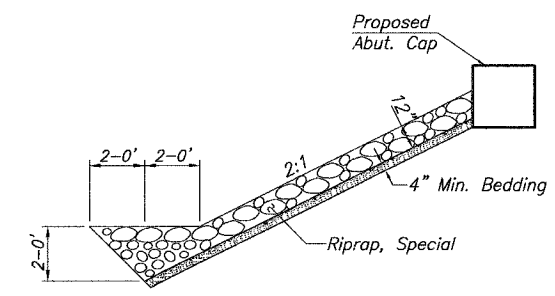
| ROUTE NO. | SECTION | COUNTY | TOTAL SHEETS | SHEET NO. |
|-----------------------|----------------|----------|------------------|-----------|
| # | 04-00001-00-BR | MACOUPIN | 10 | 4 |
| FED. ROAD DIST. NO. 7 | | ILLINOIS | FED. AID PROJECT | |

*JULIAN AVENUE



COOP BRANCH
BUILT 200_ BY
MACOUPIN COUNTY
VILLAGE OF ROYAL LAKES
SEC. 04-00001-00-BR
STR. NO. 059-3444
LOADING HS 20

LETTERING FOR NAME PLATE
See Std. 515001



Note: See Special Provisions for Riprap, Special

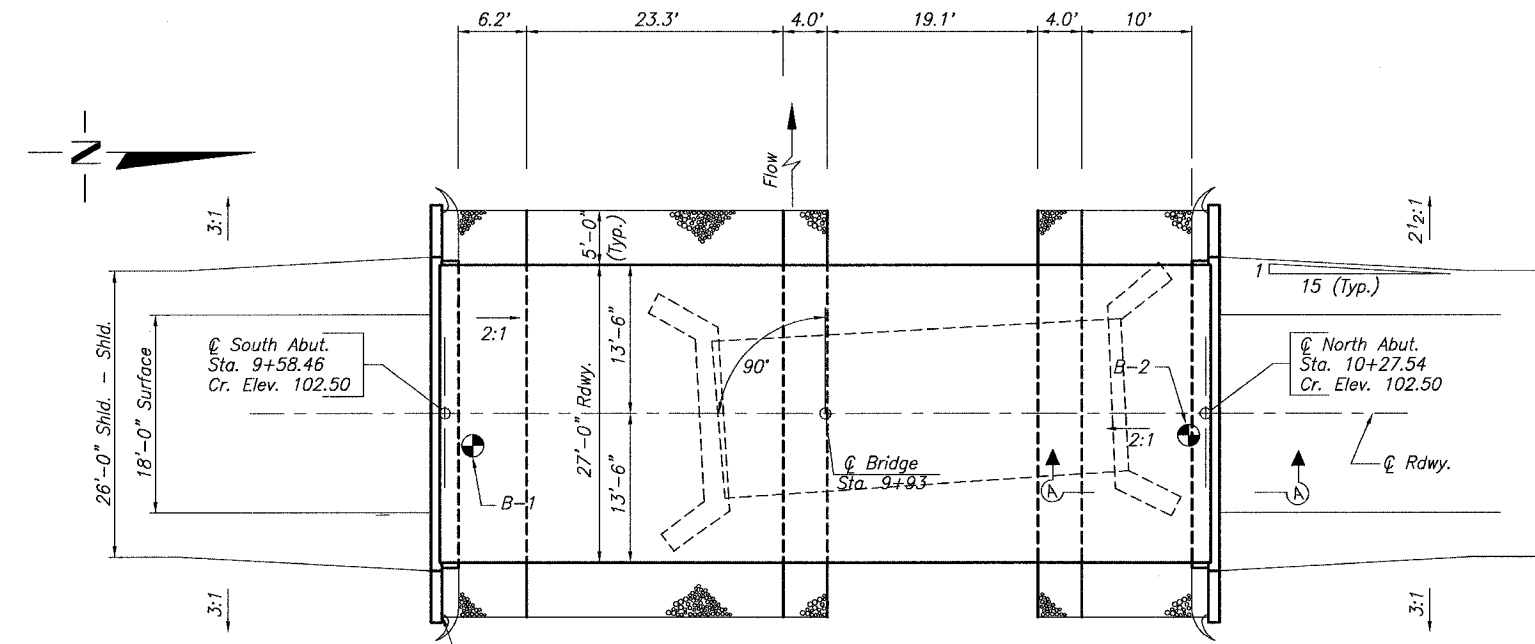
GENERAL NOTES

The Standard Specifications adopted by the Department of Transportation, January 1, 2007 shall apply to this work.

The layout of riprap may be varied in the field to better suit ground conditions, as directed by the Engineer.

The Contractor shall drive one steel test pile in a permanent location at each Abutment, as directed by the Engineer, before ordering the remainder of the piles. See Special Provisions for Borings.

Reinforcement bars shall conform to requirements of ASTM A706 Grade 60. See Special Provisions.



TOTAL BILL OF MATERIAL

| ITEM | UNIT | SUPER | SUB | TOTAL |
|---|---------|-------|-------|-------|
| Precast Prestressed Concrete Deck Beams (27" Depth) | Sq. Ft. | 1,890 | | 1,890 |
| Concrete Structures | Cu. Yd. | | 20.7 | 20.7 |
| Reinforcement Bars | Pound | | 3,360 | 3,360 |
| Steel Railing, Type S1 | Foot | 140 | | 140 |
| Name Plates | Each | | 1 | 1 |
| Steel Pile, HP 10 x 42 | Foot | | 225 | 225 |
| Test Pile, Steel HP 10 x 42 | Each | | 2 | 2 |
| Riprap, Special | Ton | | | 124 |
| Concrete Encasement | Cu. Yd. | | 2.8 | 2.8 |

WATERWAY DATA

| | |
|--------------------------|--------------|
| DRAINAGE AREA | 3.05 SQ. MI. |
| EXISTING OPENING | 168 SQ. FT. |
| REQUIRED OPENING | 246 SQ. FT. |
| PROPOSED OPENING | 246 SQ. FT. |
| DESIGN DISCHARGE (15YR.) | 947 C.F.S. |
| CREATED HEAD | 0.13 FEET |
| 100 YR. DISCHARGE | 1657 C.F.S. |
| 100 YR. CREATED HEAD | 0.47 FEET |

IDNR-Office of Water Resources has issued Permit DS2008010 for construction of this project.

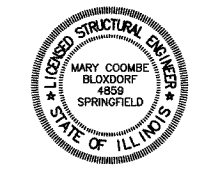
DESIGN STRESSES

| | |
|-----------|---|
| f'_c | = 5,000 psi (Prestressed Beams) |
| f'_{ci} | = 4,000 psi (Prestressed Beams) |
| f_c | = 1,400 psi (Class SI Concrete) |
| f'_s | = 270,000 psi (Prestressed Strands) |
| f'_{si} | = 201,960 psi (Prestressed Strands) |
| f_s | = 24,000 psi (Reinf. Bars -- Field Units) |
| f_y | = 60,000 psi (Reinf. Bars -- Precast Units) |
| n | = 9 (Class SI Concrete) |

Loading HS 20-44
Design Specifications: 2002 AASHTO
25#/Sq. Ft. included in dead load for future wearing surface.

I certify that to the best of my knowledge, information and belief, this bridge design is structurally adequate for the design loading shown on the plans. The design is an economical one for the style of structure and complies with requirements of the current "AASHTO Standard Specifications for Highway Bridges".

Mary Coombe Bloxdorf 03/20/08
ILLINOIS STRUCTURAL NO. 4859



EXP. 11-30-08

SHEET TITLE

GENERAL PLAN & ELEVATION

PROJECT SECTION 04-00001-00-BR VILLAGE OF ROYAL LAKES MACOUPIN COUNTY STATION 9+93

PROJECT NO. 060112

SCALE 1-30-08

DRAWN BY MRL

CHECKED BY MCB

DRAWING NO. 4

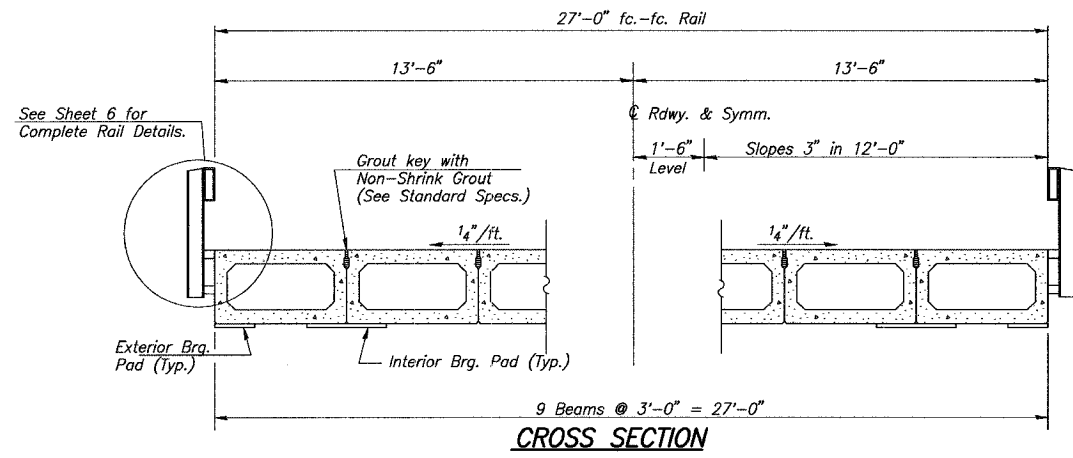
OF 10 SHTS

COOMBE-BLOXDORF P.C. Engineers / Land Surveyors Springfield, Illinois Design Firm License No. 184-002703

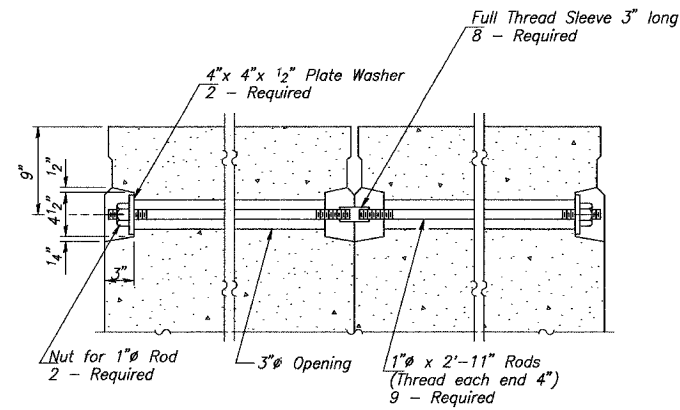
| ROUTE NO. | SECTION | COUNTY | TOTAL SHEETS | SHEET NO. |
|-----------------------|----------|-------------------|--------------|-----------|
| 04-0001-00-BR | MACOUPIN | ILLINOIS | 10 | 5 |
| FED. ROAD DIST. NO. 7 | | FED. AID PROJECT- | | |

*JULIAN AVENUE

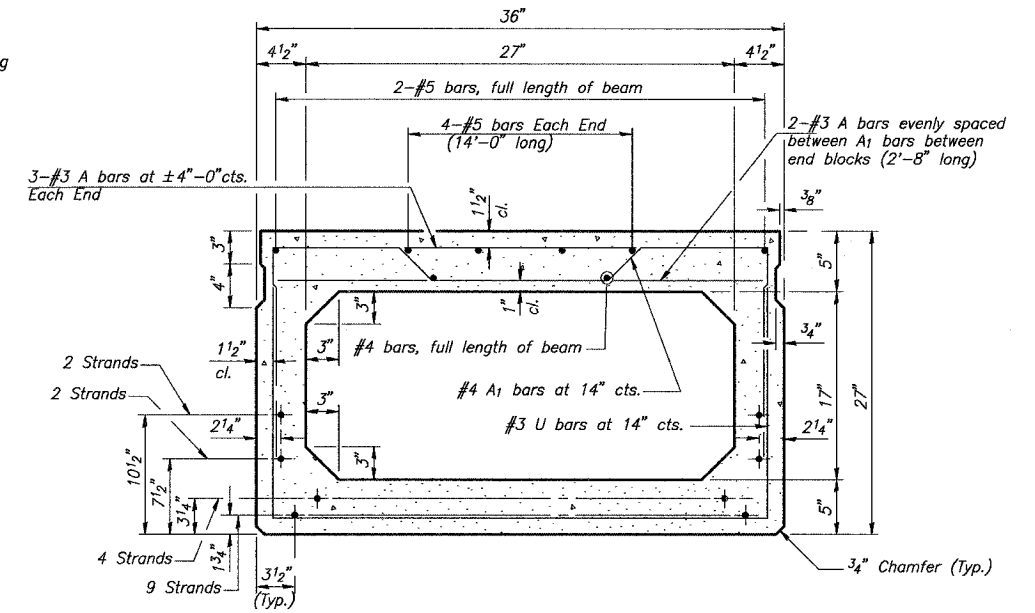
NOTE: Omit key on exterior face of outside beams.



CROSS SECTION

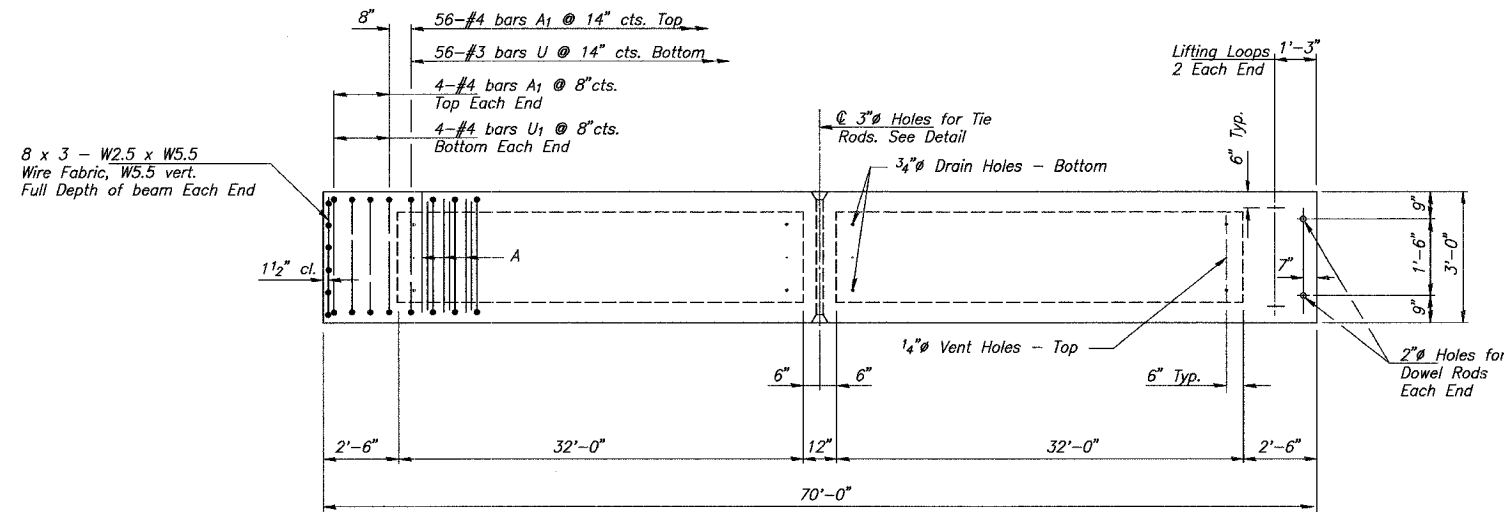


TRAVERSE TIE ROD DETAIL



TYPICAL SECTION THRU BEAM

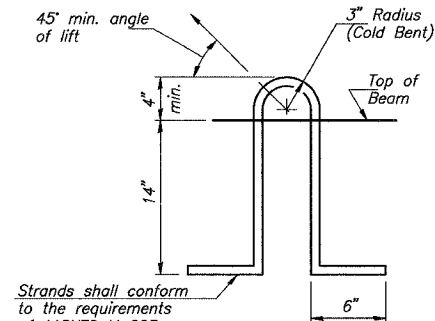
17- 1/2" Strands Stressed to 30,900 Lbs. Each Place strands symmetrically about ϵ of beam. Use Standard Grid Pattern.



TYPICAL PLAN OF BEAMS

NOTES

Required release strength, f_{ci} , shall be 4,000 p.s.i. Prestressing steel shall be uncoated, high strength, low relaxation 7-wire strand, Grade 270. The nominal diameter shall be 1/2" and the nominal cross-sectional area shall be 0.153 sq. in. Lifting loops shall be 7-wire stress-relieved, 3-1/2" - 270 ksi strands. The 1" rods in the transverse tie assembly shall be tightened to a snug fit and the threads set. Pockets that receive tie rods on outside shall be filled with grout after ties are in place. Reinforcement bars shall conform to the requirements of ASTM A706 Grade 60. See Special Provisions. The bearing seat surfaces shall be adjusted by shimming to assure firm and even bearing. Two 1/8" fabric adjusting shims of the dimensions of the Exterior Bearing Pad shall be provided for each bearing. Keyway surfaces shall be cleaned to remove form oil and other bond breaking material prior to shipment of the beams. Cleaning shall be done by sandblasting the keyway areas between top of the beam and the bottom edge of the key. Railpost anchor devices shall be cast into exterior face of outside beams as specified elsewhere.

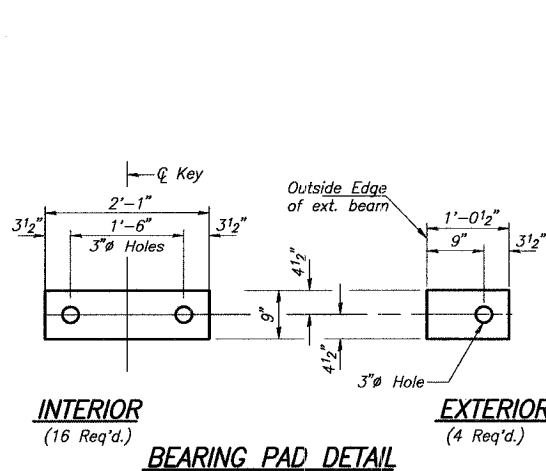


LIFTING LOOP DETAIL

Approved alternate may be substituted for the above.

BILL OF MATERIAL

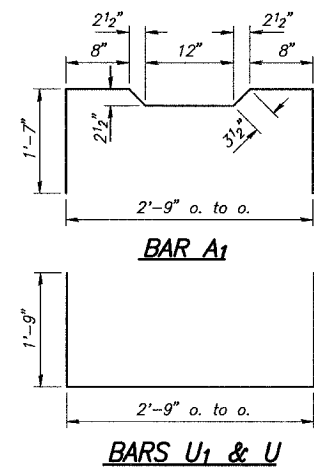
| Item | Unit | Quantity |
|---|---------|----------|
| Precast Prestressed Concrete Deck Beams (27" Depth) | Sq. Ft. | 1,890 |
| | | |
| | | |
| | | |
| | | |



INTERIOR
(16 Req'd.)

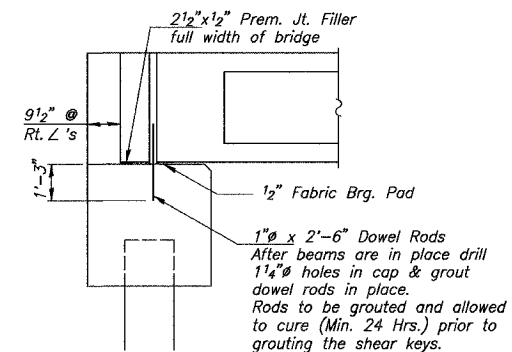
BEARING PAD DETAIL

EXTERIOR
(4 Req'd.)



BAR A1

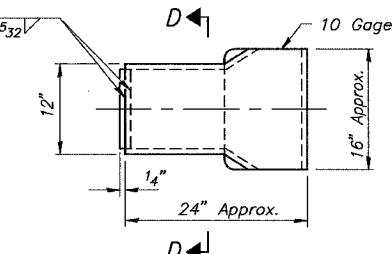
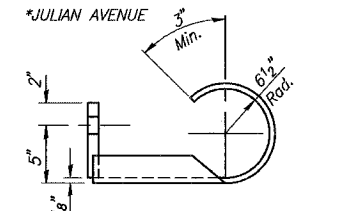
BARS U1 & U



SECTION AT ABUTMENTS

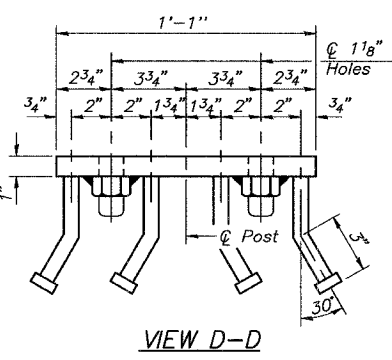
| | | | |
|------------------------------------|------------------------|-----------------|---------|
| SHEET TITLE | | SUPERSTRUCTURE | |
| PROJECT | SECTION 04-0001-00-BR | PROJECT NO. | 06012 |
| | VILLAGE OF ROYAL LAKES | SCALE | 1-30-08 |
| | MACOUPIN COUNTY | DRAWN BY | MRL |
| | STATION 9+93 | CHECKED BY | MCB |
| COOMBE-BLOXDORF P.C. | | ENGINEERING NO. | 5 |
| Engineers / Land Surveyors | | | |
| Springfield, Illinois | | | |
| Design Firm License No. 184-002703 | | | |

| ROUTE NO. | SECTION | COUNTY | TOTAL SHEETS | SHEET NO. |
|-----------------------|----------|-------------------|--------------|-----------|
| 04-00001-00-BR | MACOUPIN | ILLINOIS | 10 | 6 |
| FED. ROAD DIST. NO. 7 | | FED. AID PROJECT- | | |



CURLED END SECTION DETAILS
(4 Required)

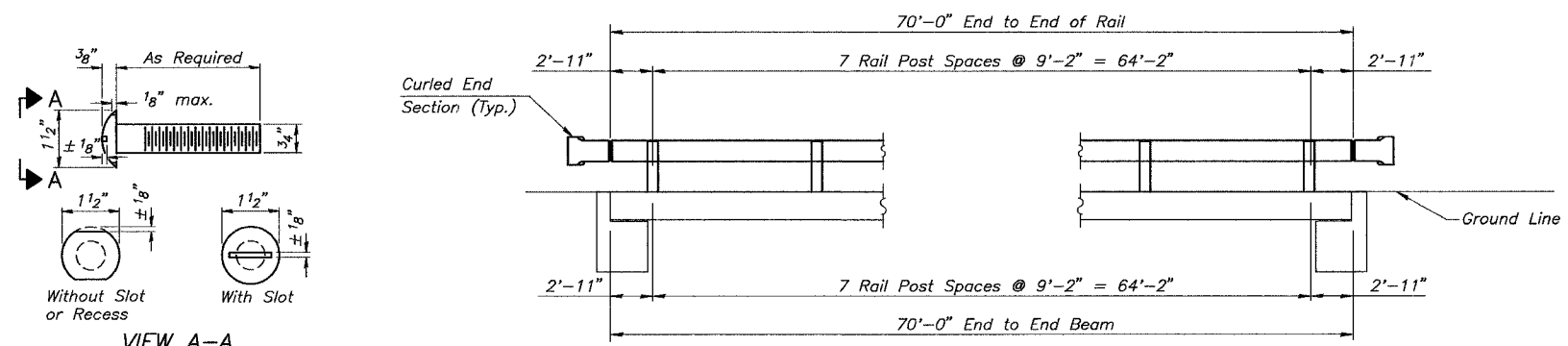
Notes:
All field drilled holes shall be coated with an approved zinc rich paint before erection.
For multi-span bridges, sufficient 1/4" x 6" x 1'-2" galvanized steel shims shall be provided to align rail between adjacent spans. Cost included with Steel Railing, Type S-1.
All steel rail elements shall be galvanized according to Article 509.05 of the Standard Specifications.
*** The studs of the anchor devices shall be placed below the top reinforcement bars and the outermost longitudinal reinforcement bar shall be placed directly above the studs of the rail post anchor device.
Curled End Sections shall conform to the requirements of AASHTO M 180 Type 1, Class A.



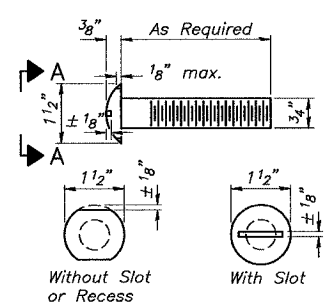
BILL OF MATERIAL

| Item | Unit | Quantity |
|------------------------|------|----------|
| Steel Railing, Type S1 | Foot | 140 |

| | | | |
|--------------------|--|---|--|
| SHEET TITLE | | STEEL RAILING, TYPE S1 | |
| PROJECT | | SECTION 04-00001-00-BR VILLAGE OF ROYAL LAKES MACOUPIN COUNTY STATION 9+93 | |
| DESIGNER | | COOMBE-BLOXDORF P.C. Engineers / Land Surveyors Springfield, Illinois Design Firm License No. 184-002703 | |
| DATE | | 06012 1-30-08 | |
| DRAWN BY | | PPW | |
| CHECKED BY | | MRL | |
| DRAWING NO. | | 6 | |
| | | OF 10_SHTS | |

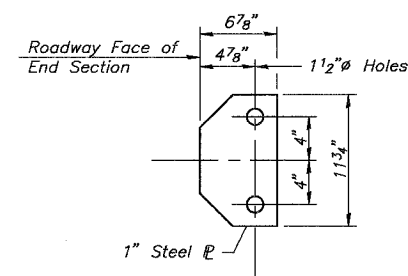


ELEVATION
Showing Inside Face of Rail

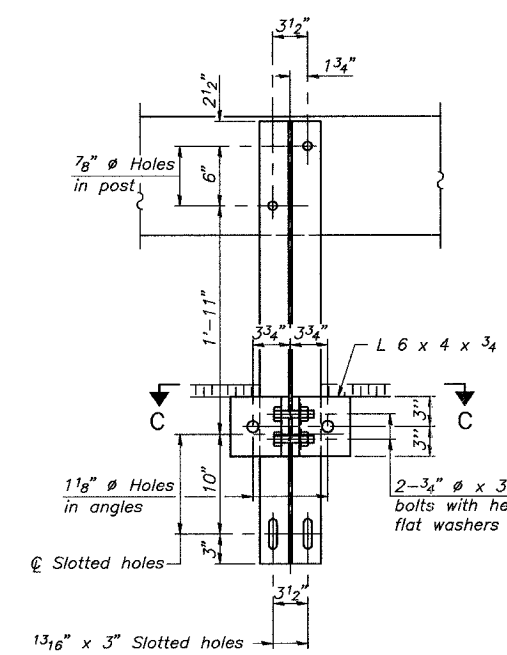


VIEW A-A
ROUND HEAD BOLT

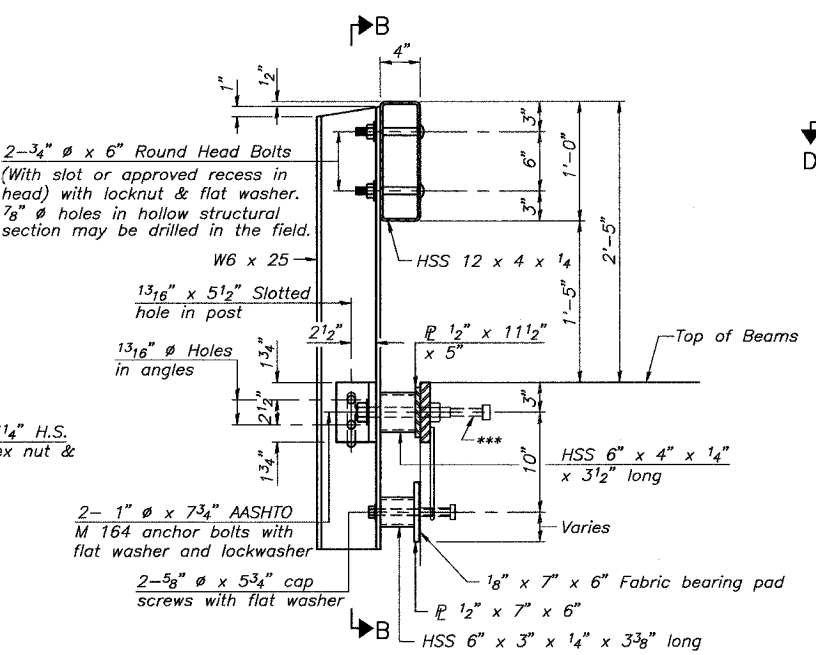
Note: Cost of Curled End Sections shall be considered incidental to the Steel Railing, Type S1.



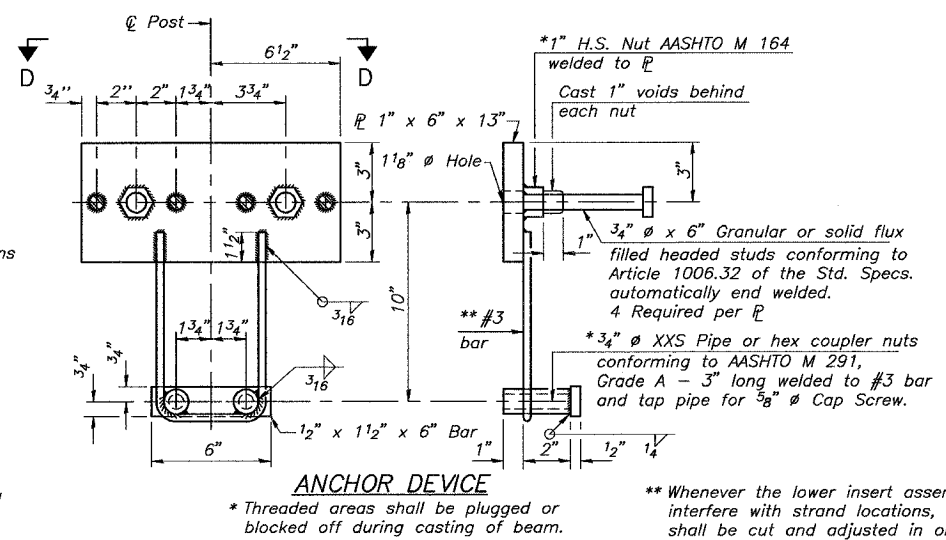
SECTION D-D



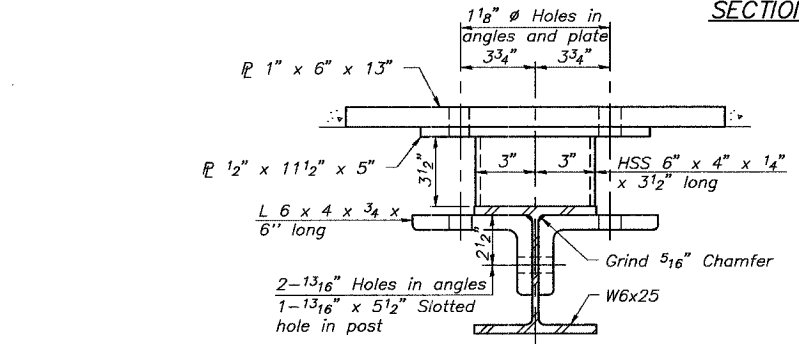
SECTION B-B



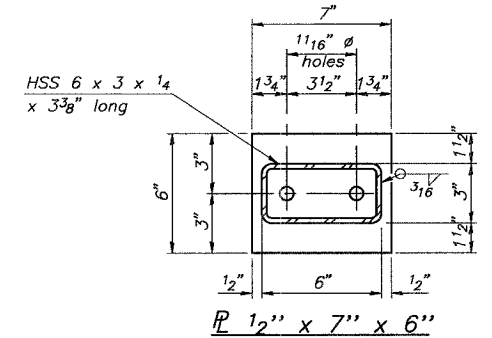
SECTION AT RAILING POST



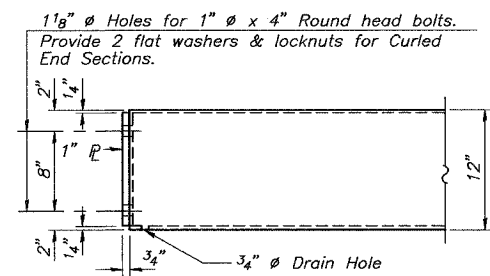
ANCHOR DEVICE



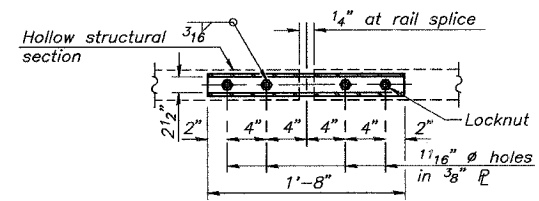
SECTION C-C



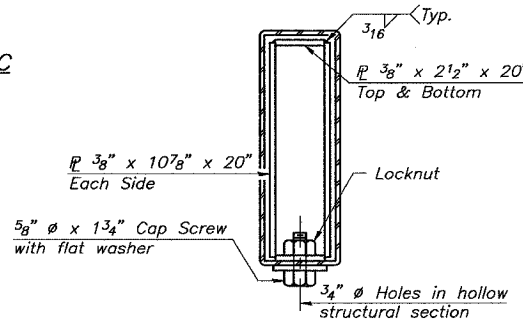
1/2" x 7" x 6"



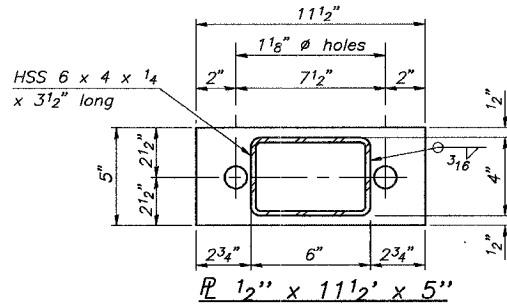
END OF RAIL DETAILS



PLAN-BOTT. SPLICE
TYPICAL



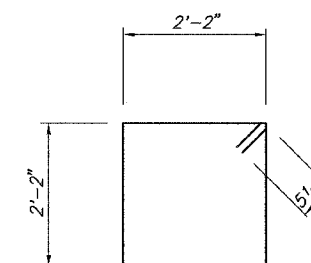
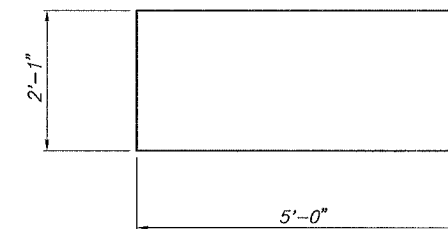
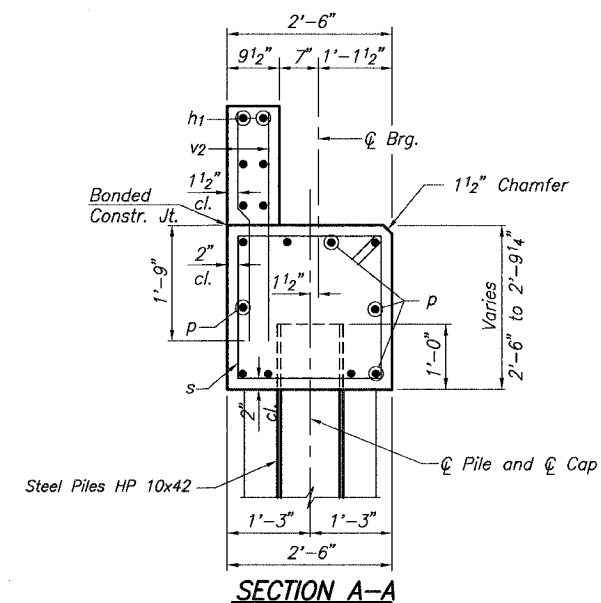
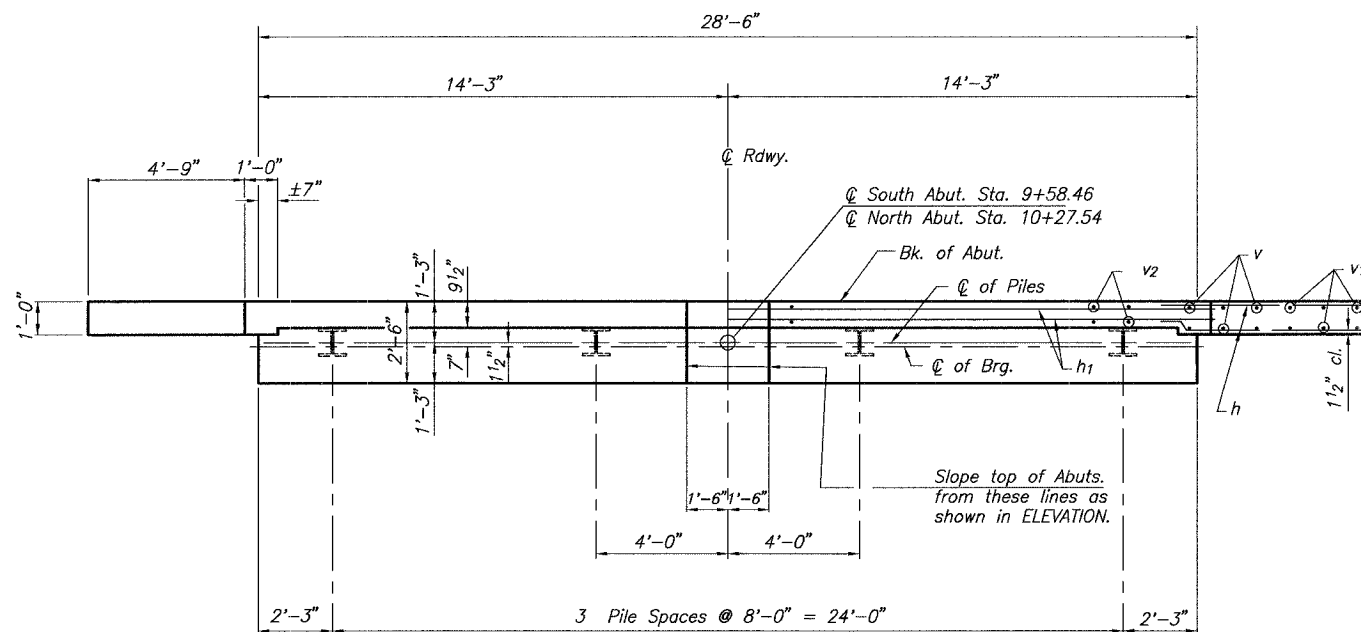
SECTIONS AT RAIL SPLICE



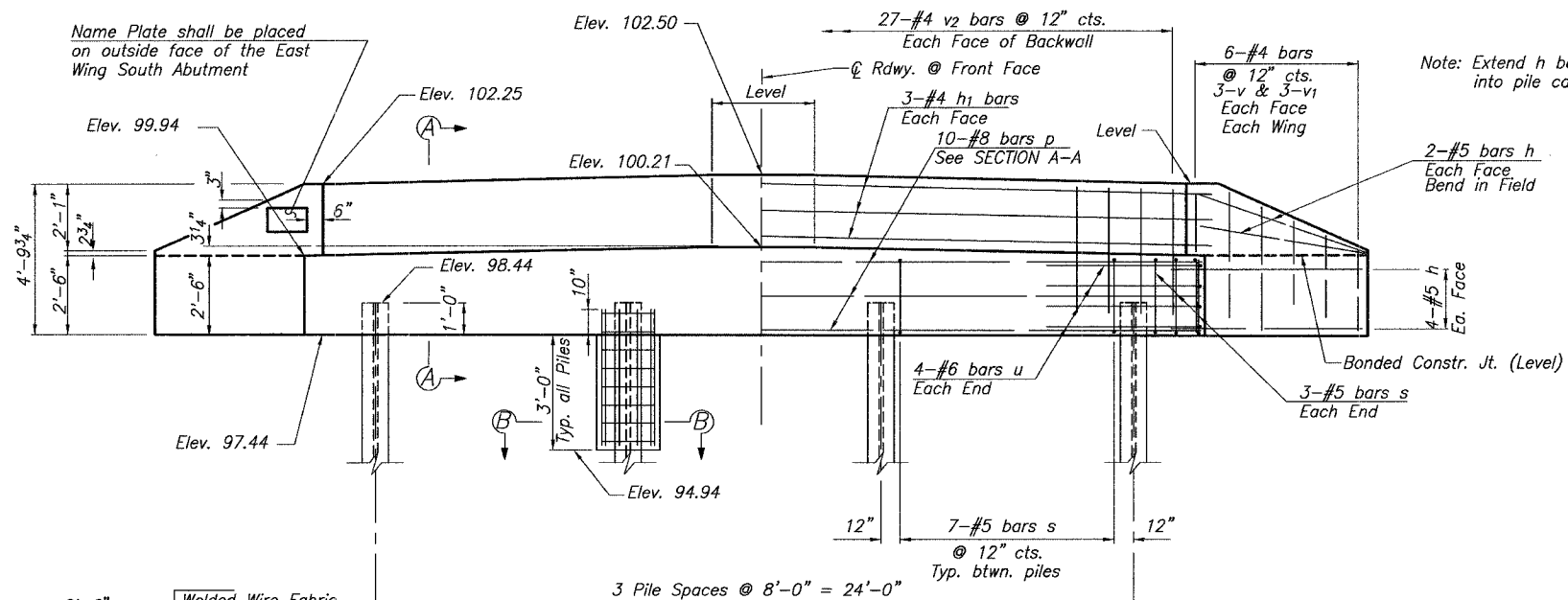
1/2" x 11 1/2" x 5"

| ROUTE NO. | SECTION | COUNTY | TOTAL SHEETS | SHEET NO. |
|-----------------------|----------|----------|-------------------|-----------|
| 04-0001-00-BR | MACOUPIN | MACOUPIN | 10 | 7 |
| FED. ROAD DIST. NO. 7 | | ILLINOIS | FED. AID PROJECT- | |

*JULIAN AVENUE



Note: After all beams are in place and dowel rods grouted, the backwall and portions of the wingwall above the bonded construction joint shall be poured.



BILL OF MATERIAL - 2 ABUTS.

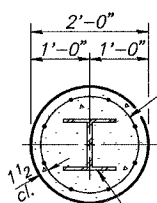
| BAR NO. | SIZE | LENGTH | SHAPE |
|---------------------------|------|--------|--------------|
| h | #5 | 7'-6" | — |
| h ₁ | #4 | 30'-6" | — |
| p | #8 | 28'-2" | — |
| s | #5 | 9'-7" | □ |
| u | #6 | 12'-1" | — |
| v | #4 | 3'-11" | — |
| v ₁ | #4 | 2'-7" | — |
| v ₂ | #4 | 4'-1" | — |
| Concrete Structures | | | Cu. Yd. 20.7 |
| Reinforcement Bars | | | Pound 3,360 |
| Name Plates | | | Each 1 |
| Steel Pile, HP 10x42 | | | Foot 225 |
| Test Pile, Steel HP 10x42 | | | Each 2 |
| Conc. Encasement | | | Cu. Yd. 2.8 |

PILE DATA

Type _____ Steel HP 10x42
 No. Req'd. (2 Abut.) _____ 8*
 Nominal Required Bearing _____ 288 Kips/Pile
 Allowable Resistance Available _____ 96 Kips/Pile
 Est. Length _____ 35 Feet/Pile (North Abut.)
 _____ 40 Feet/Pile (South Abut.)

*Includes one steel test pile to be driven in a permanent location at the each Abutment. The test pile shall be driven to 110 percent of the Nominal Required Bearing indicated in the pile data information.

Steel H-Piles shall be according to AASHTO M270, Grade 50.



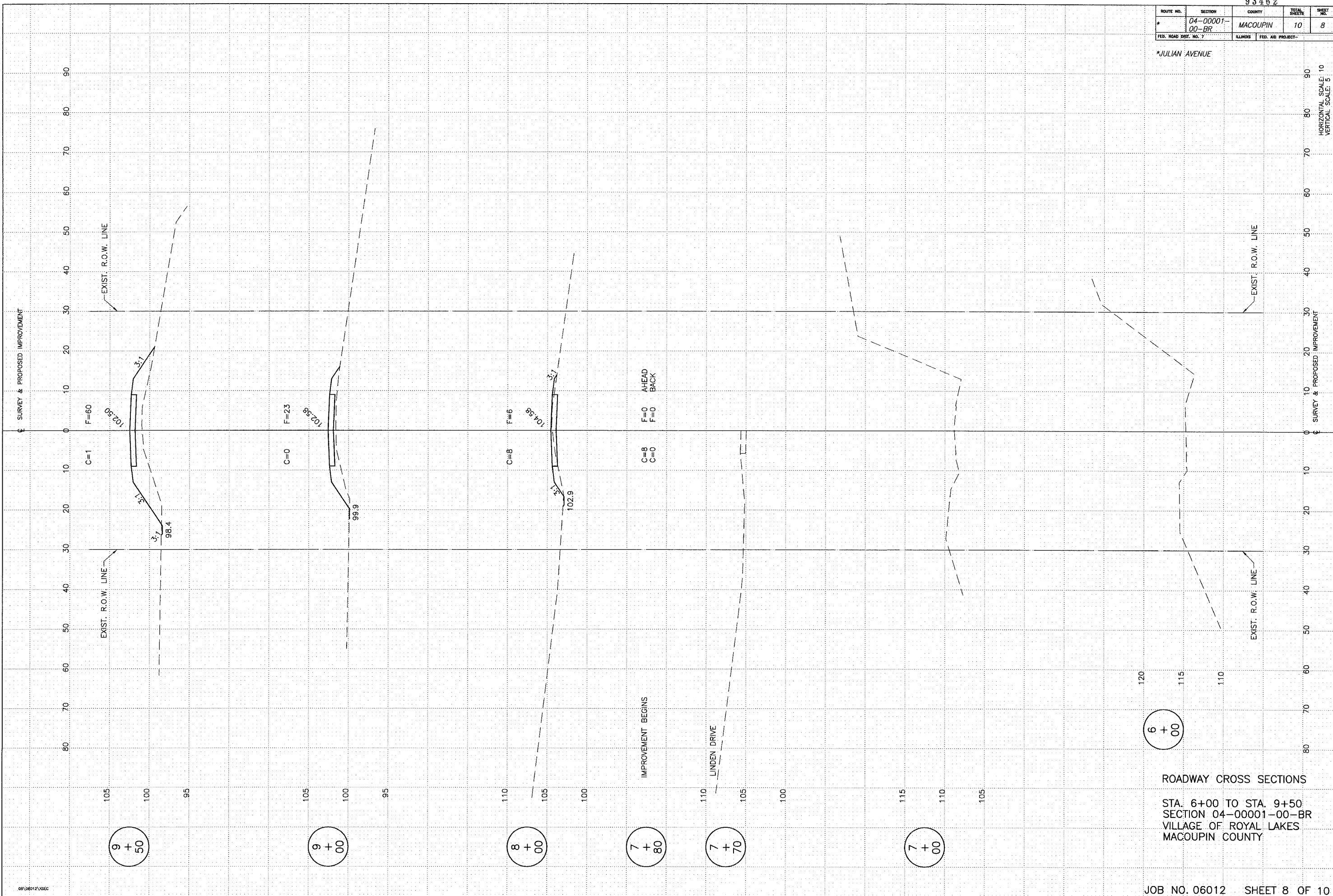
Welded Wire Fabric 6x6-W4.0xW4.0 weighing 58#/100 sq. ft. The cost of Excavation and Reinforcement shall be incidental to the cost of Concrete Encasement. Forms for Encasement may be omitted when soil conditions permit. Extend reinforcement 1'-0" into cap.

| | | | | |
|------------------------------------|--|-----------------------|-------------|---------|
| PROJECT | | SECTION 04-0001-00-BR | PROJECT NO. | 08012 |
| VILLAGE OF ROYAL LAKES | | MACOUPIN COUNTY | SCALE | 1-30-08 |
| STATION 9+93 | | | DATE | 1-30-08 |
| | | | DRAWN BY | MRL |
| | | | CHECKED BY | MCB |
| DRAWING NO. | | 7 | | |
| COOMBE-BLOXDORF P.C. | | OF 10 SHEETS | | |
| Engineers / Land Surveyors | | | | |
| Springfield, Illinois | | | | |
| Design Firm License No. 184-002703 | | | | |

| ROUTE NO. | SECTION | COUNTY | TOTAL SHEETS | SHEET NO. |
|-----------------------|----------|-------------------|--------------|-----------|
| * 04-00001-00-BR | | MACOUPIN | 10 | 8 |
| FED. ROAD DIST. NO. 7 | ILLINOIS | FED. AID PROJECT- | | |

*JULIAN AVENUE

HORIZONTAL SCALE: 10
VERTICAL SCALE: 5

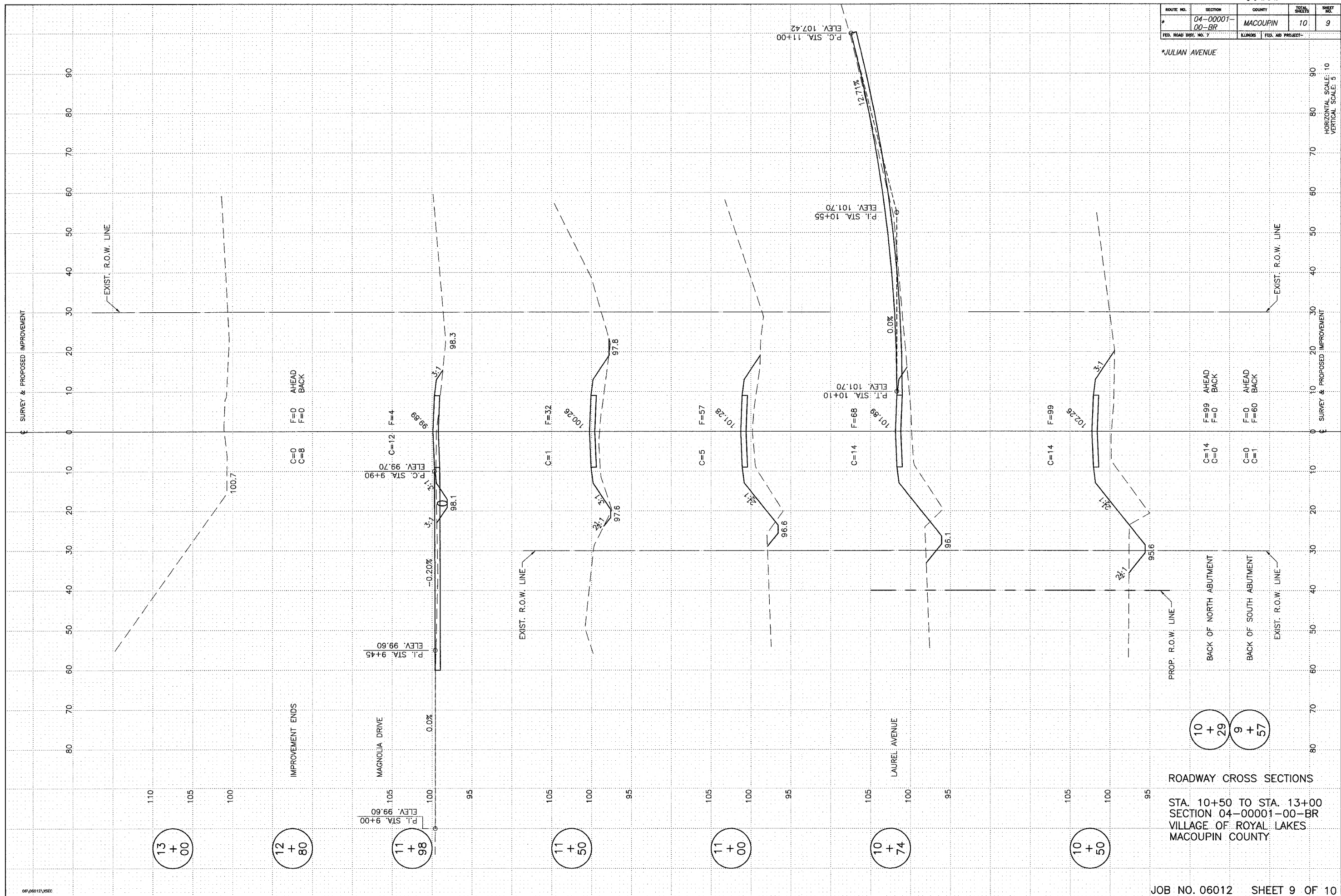


ROADWAY CROSS SECTIONS
 STA. 6+00 TO STA. 9+50
 SECTION 04-00001-00-BR
 VILLAGE OF ROYAL LAKES
 MACOUPIN COUNTY

| ROUTE NO. | SECTION | COUNTY | TOTAL SHEETS | SHEET NO. |
|-----------------------|----------------|----------------------------|--------------|-----------|
| # | 04-00001-00-BR | MACOUPIN | 10 | 9 |
| FED. ROAD DIST. NO. 7 | | ILLINOIS FED. AID PROJECT- | | |

*JULIAN AVENUE

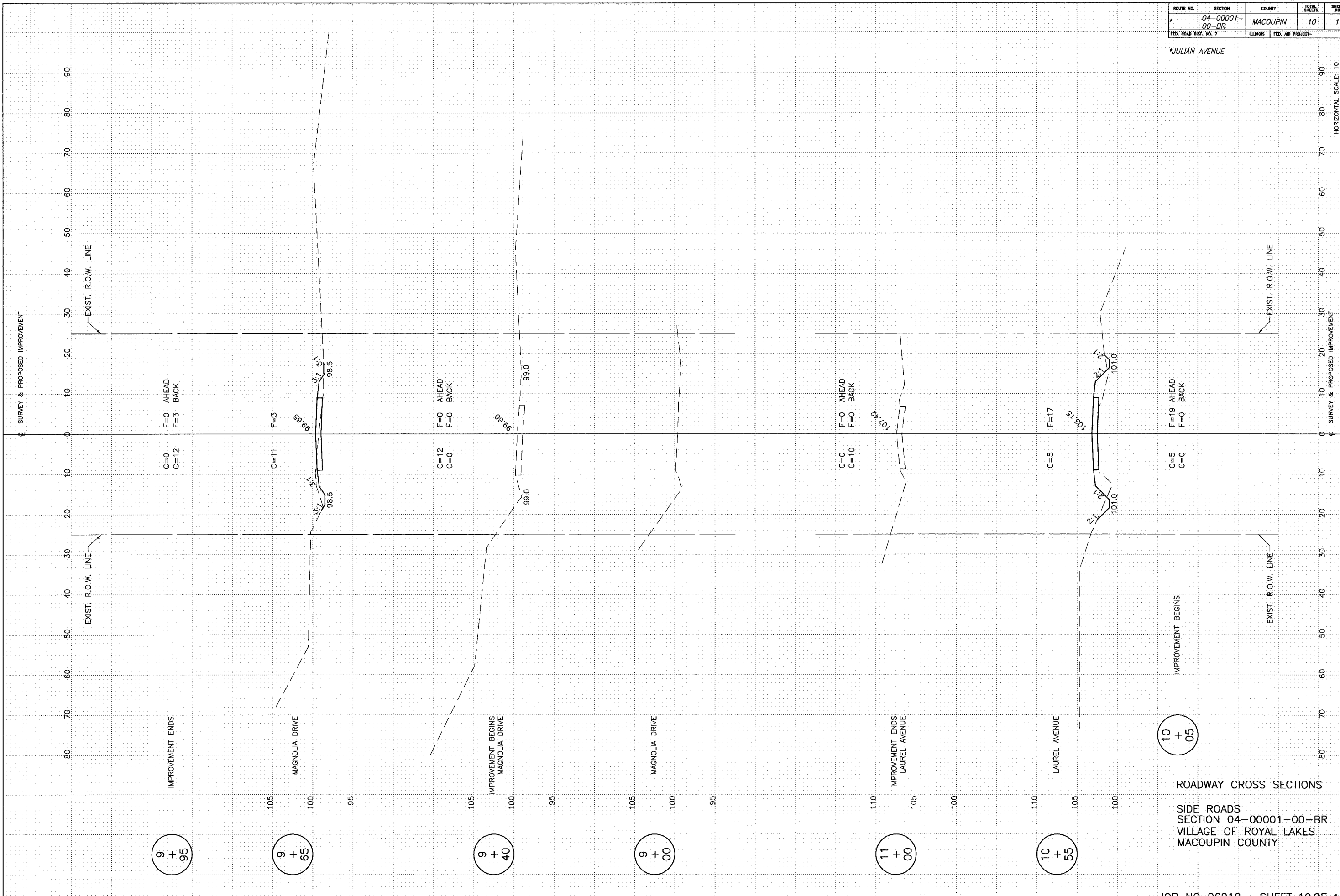
HORIZONTAL SCALE: 10
VERTICAL SCALE: 5



ROADWAY CROSS SECTIONS
 STA. 10+50 TO STA. 13+00
 SECTION 04-00001-00-BR
 VILLAGE OF ROYAL LAKES
 MACOUPIN COUNTY

| ROUTE NO. | SECTION | COUNTY | TOTAL SHEETS | SHEET NO. |
|-----------------------|---------|----------|-------------------|-----------|
| * 04-0001-00-BR | | MACOUPIN | 10 | 10 |
| FED. ROAD DIST. NO. 7 | | ILLINOIS | FED. AID PROJECT- | |

*JULIAN AVENUE



ROADWAY CROSS SECTIONS
 SIDE ROADS
 SECTION 04-0001-00-BR
 VILLAGE OF ROYAL LAKES
 MACOUPIN COUNTY