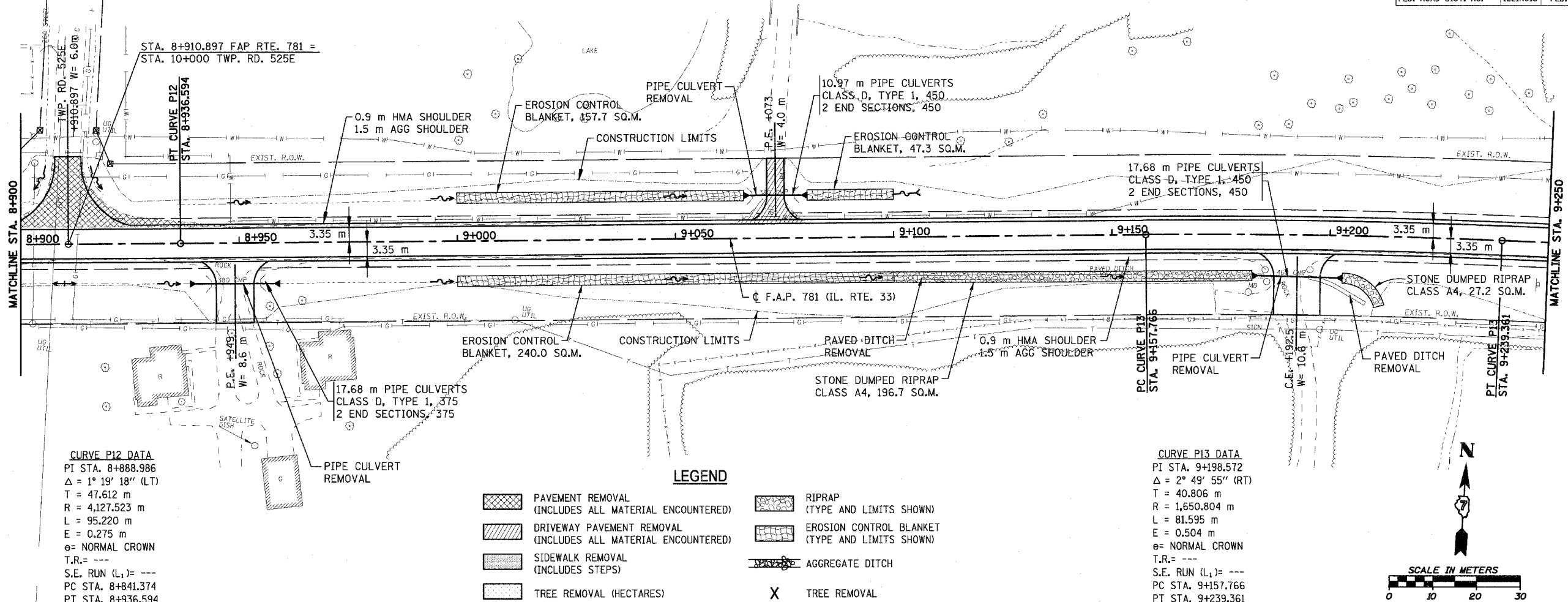


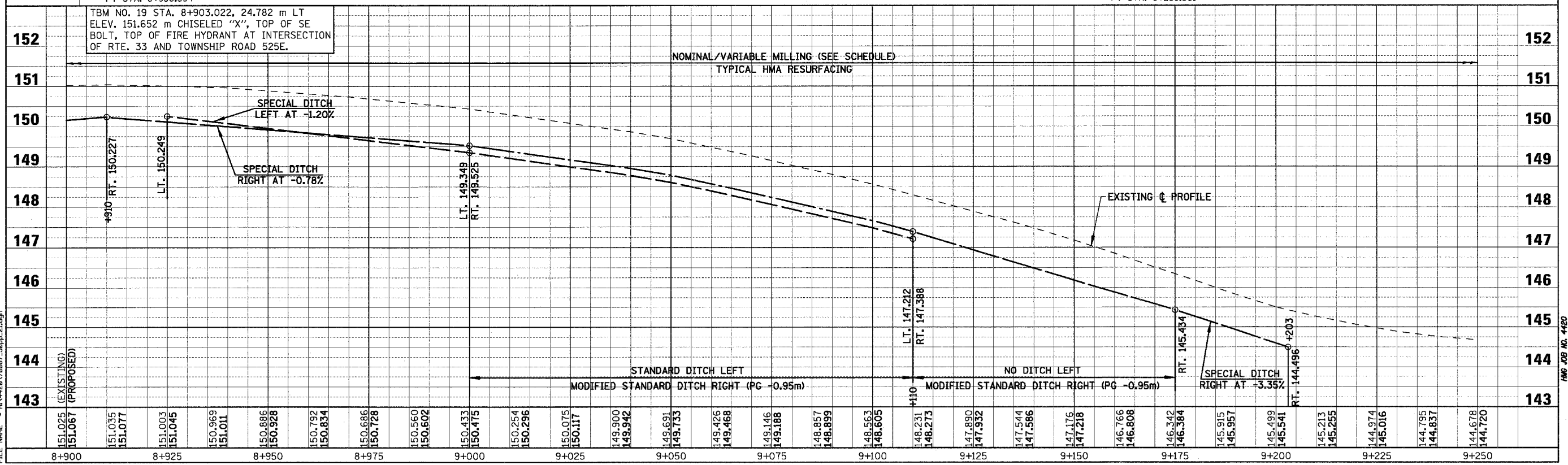
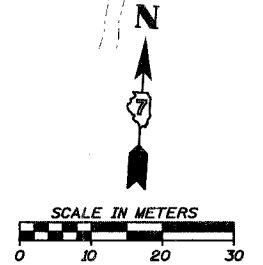
F.A.P. RTE.	SECTION	COUNTY	TOTAL SHEETS	SHEET NO.
781	1YRS, 2ZRS-1	CRAWFORD	378	87
STA. 8+900		TO STA. 9+250		
FED. ROAD DIST. NO.	ILLINOIS	FED. AID PROJECT		



**CURVE P12 DATA**  
 PI STA. 8+888.986  
 $\Delta = 1^\circ 19' 18''$  (LT)  
 T = 47.612 m  
 R = 4,127.523 m  
 L = 95.220 m  
 e = 0.275 m  
 e = NORMAL CROWN  
 T.R. = ---  
 S.E. RUN (L<sub>1</sub>) = ---  
 PC STA. 8+841.374  
 PT STA. 8+936.594

**CURVE P13 DATA**  
 PI STA. 9+198.572  
 $\Delta = 2^\circ 49' 55''$  (RT)  
 T = 40.806 m  
 R = 1,650.804 m  
 L = 81.595 m  
 e = 0.504 m  
 e = NORMAL CROWN  
 T.R. = ---  
 S.E. RUN (L<sub>1</sub>) = ---  
 PC STA. 9+157.766  
 PT STA. 9+239.361

- LEGEND**
- PAVEMENT REMOVAL (INCLUDES ALL MATERIAL ENCOUNTERED)
  - DRIVEWAY PAVEMENT REMOVAL (INCLUDES ALL MATERIAL ENCOUNTERED)
  - SIDEWALK REMOVAL (INCLUDES STEPS)
  - TREE REMOVAL (HECTARES)
  - RIPRAP (TYPE AND LIMITS SHOWN)
  - EROSION CONTROL BLANKET (TYPE AND LIMITS SHOWN)
  - AGGREGATE DITCH
  - TREE REMOVAL



TBM NO. 19 STA. 8+903.022, 24.782 m LT  
 ELEV. 151.652 m CHISELED "X", TOP OF SE BOLT, TOP OF FIRE HYDRANT AT INTERSECTION OF RTE. 33 AND TOWNSHIP ROAD 525E.

PLOT DATE = 4/18/2008  
 FILE NAME = H:\4428\70087\_50pp\_2.dgn

Sheet: 21  
 Angle: 3.6548  
 Chain: P\_IL33