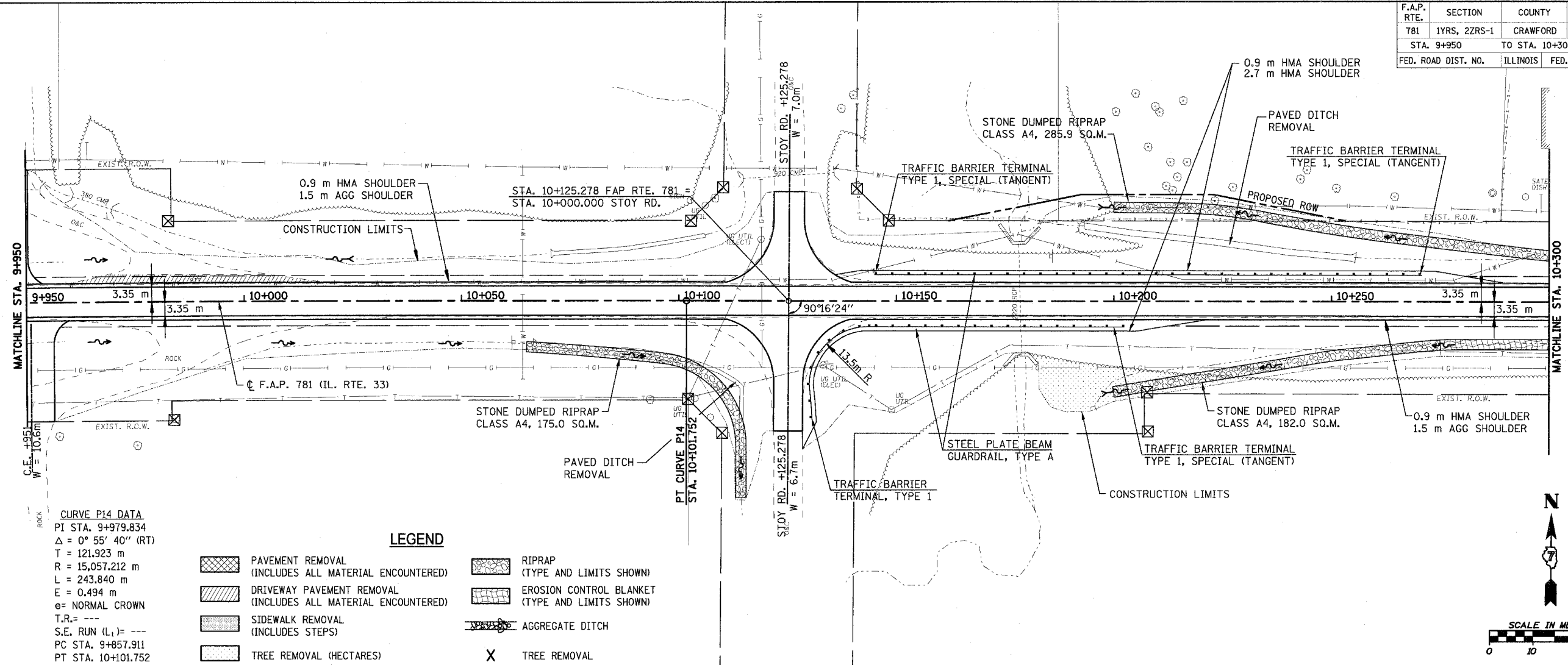


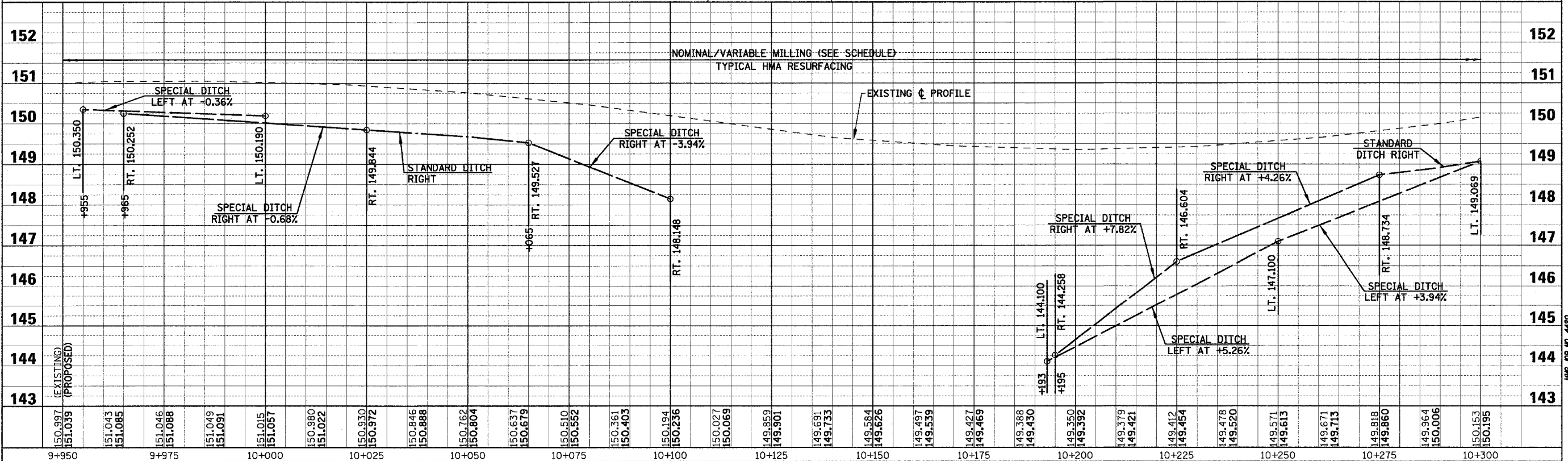
| F.A.P. RTE. | SECTION | COUNTY | TOTAL SHEETS | SHEET NO. |
|---------------------|--------------|----------------|------------------|-----------|
| 781 | 1YRS, 2ZRS-1 | CRAWFORD | 378 | 90 |
| STA. 9+950 | | TO STA. 10+300 | | |
| FED. ROAD DIST. NO. | | ILLINOIS | FED. AID PROJECT | |



CURVE P14 DATA
 PI STA. 9+979.834
 $\Delta = 0^\circ 55' 40''$ (RT)
 T = 121.923 m
 R = 15,057.212 m
 L = 243.840 m
 E = 0.494 m
 e = NORMAL CROWN
 T.R. = ---
 S.E. RUN (L₁) = ---
 PC STA. 9+857.911
 PT STA. 10+101.752

LEGEND

| | | | |
|--|--|--|--|
| | PAVEMENT REMOVAL (INCLUDES ALL MATERIAL ENCOUNTERED) | | RIPRAP (TYPE AND LIMITS SHOWN) |
| | DRIVEWAY PAVEMENT REMOVAL (INCLUDES ALL MATERIAL ENCOUNTERED) | | EROSION CONTROL BLANKET (TYPE AND LIMITS SHOWN) |
| | SIDEWALK REMOVAL (INCLUDES STEPS) | | AGGREGATE DITCH |
| | TREE REMOVAL (HECTARES) | | TREE REMOVAL |



PLOT DATE = 4/18/2008
 FILE NAME = H:\4428\7009\4_50pp-24.dgn