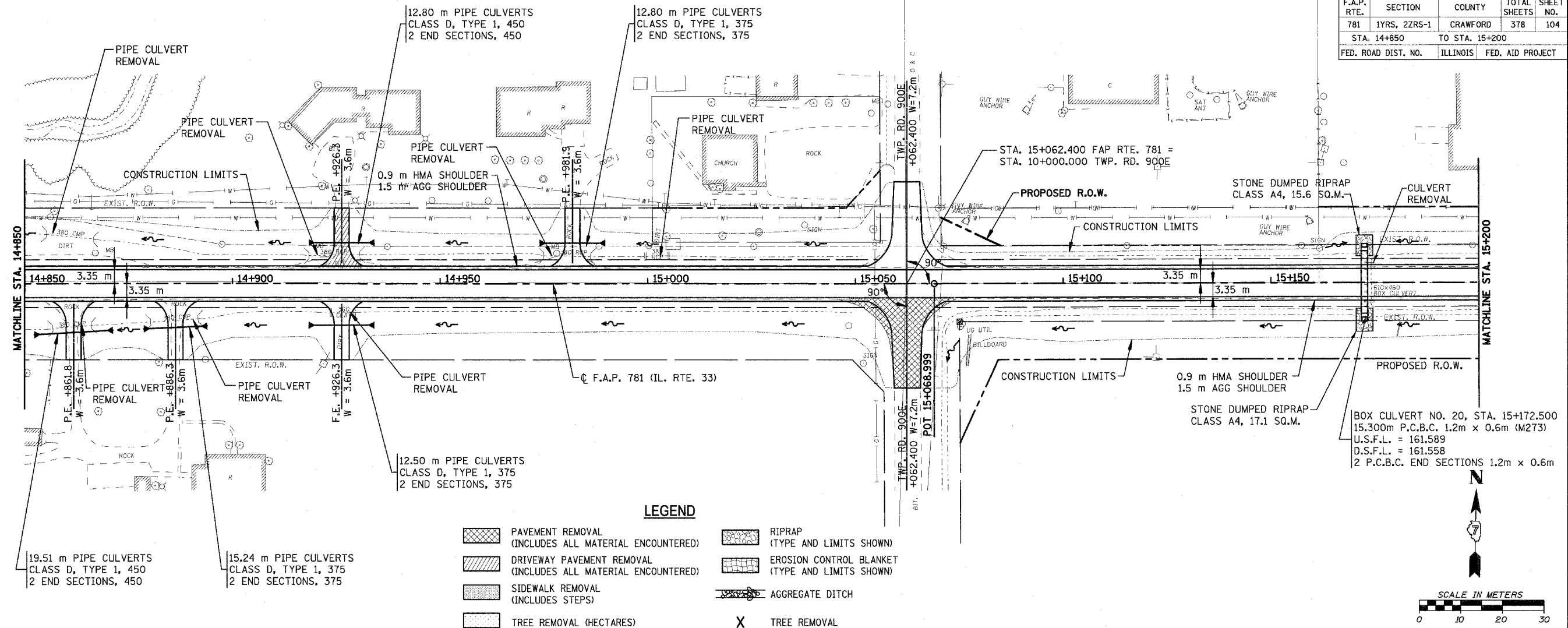


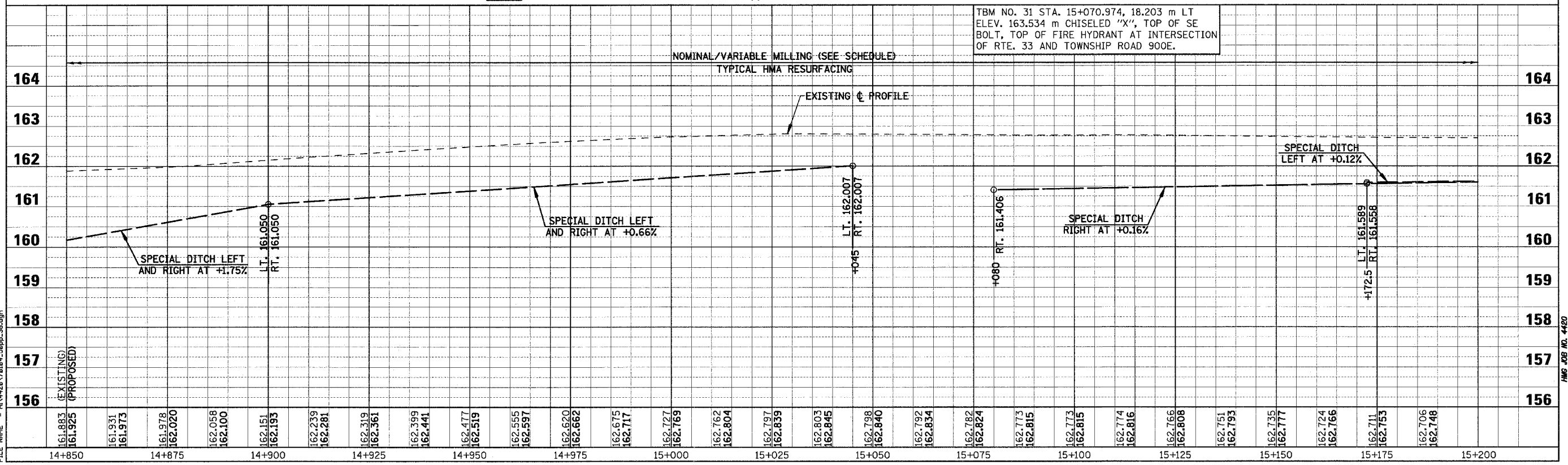
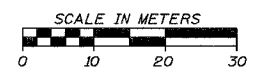
F.A.P. RTE.	SECTION	COUNTY	TOTAL SHEETS	SHEET NO.
781	1YRS, 2ZRS-1	CRAWFORD	378	104
STA. 14+850		TO STA. 15+200		
FED. ROAD DIST. NO.		ILLINOIS	FED. AID PROJECT	



BOX CULVERT NO. 20, STA. 15+172.500
 15.300m P.C.B.C. 1.2m x 0.6m (M273)
 U.S.F.L. = 161.589
 D.S.F.L. = 161.558
 2 P.C.B.C. END SECTIONS 1.2m x 0.6m

LEGEND

- PAVEMENT REMOVAL (INCLUDES ALL MATERIAL ENCOUNTERED)
- DRIVEWAY PAVEMENT REMOVAL (INCLUDES ALL MATERIAL ENCOUNTERED)
- SIDEWALK REMOVAL (INCLUDES STEPS)
- TREE REMOVAL (HECTARES)
- RIPRAP (TYPE AND LIMITS SHOWN)
- EROSION CONTROL BLANKET (TYPE AND LIMITS SHOWN)
- AGGREGATE DITCH
- TREE REMOVAL



TBM NO. 31 STA. 15+070.974, 18.203 m LT
 ELEV. 163.534 m CHISELED "X", TOP OF SE
 BOLT, TOP OF FIRE HYDRANT AT INTERSECTION
 OF RTE. 33 AND TOWNSHIP ROAD 900E.

PLOT DATE = 4/18/2008
 FILE NAME = H:\4428\78104_50ppc_38.dgn