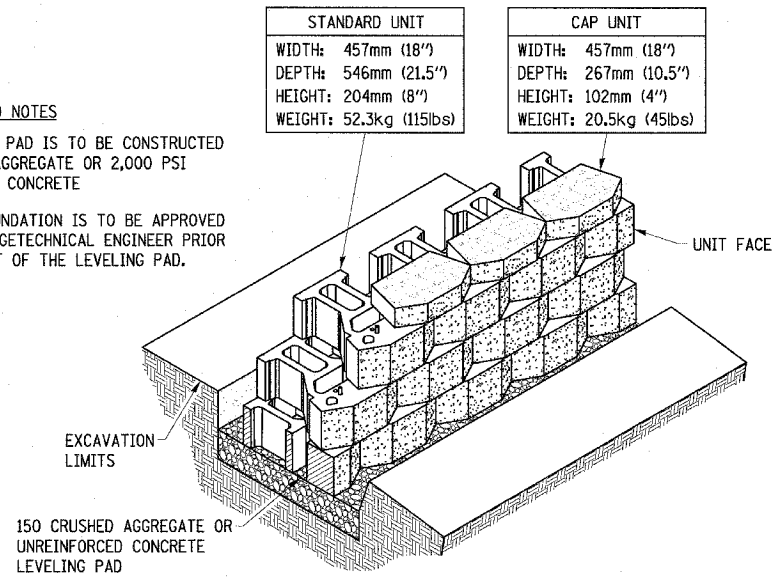


F.A.P. RTE.	SECTION	COUNTY	TOTAL SHEETS	SHEET NO.
781	1YRS, 2ZRS-1	CRAWFORD	378	108
STA.		TO STA.		
FED. ROAD DIST. NO.	ILLINOIS	FED. AID PROJECT		

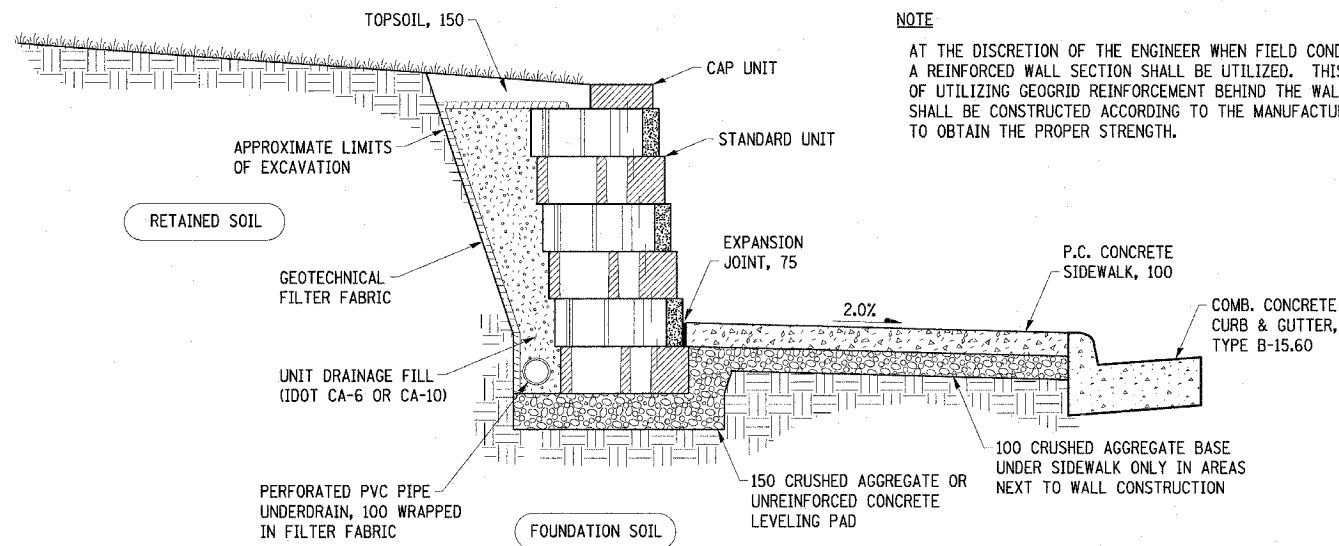
BASE LEVELING PAD NOTES

1. THE LEVELING PAD IS TO BE CONSTRUCTED OF CRUSHED AGGREGATE OR 2,000 PSI UNREINFORCED CONCRETE
2. THE BASE FOUNDATION IS TO BE APPROVED BY THE SITE GEOTECHNICAL ENGINEER PRIOR TO PLACEMENT OF THE LEVELING PAD.



STANDARD UNIT/BASE PAD ISOMETRIC SECTION VIEW

Unit Dimensions & Weight May Vary by Region

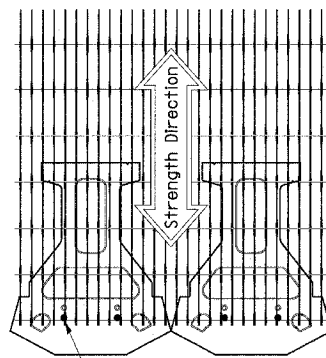


TYPICAL GRAVITY WALL SECTION

Standard Unit - 25mm (1") Setback

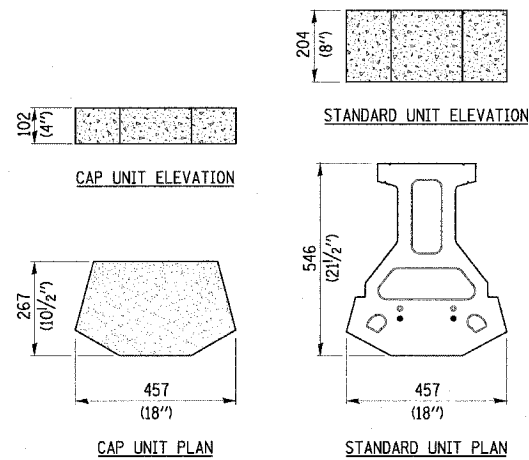
NOTE

AT THE DISCRETION OF THE ENGINEER WHEN FIELD CONDITIONS WARRANT, A REINFORCED WALL SECTION SHALL BE UTILIZED. THIS SHALL CONSIST OF UTILIZING GEOGRID REINFORCEMENT BEHIND THE WALL. THE GEOGRID SHALL BE CONSTRUCTED ACCORDING TO THE MANUFACTURERS SPECIFICATIONS TO OBTAIN THE PROPER STRENGTH.



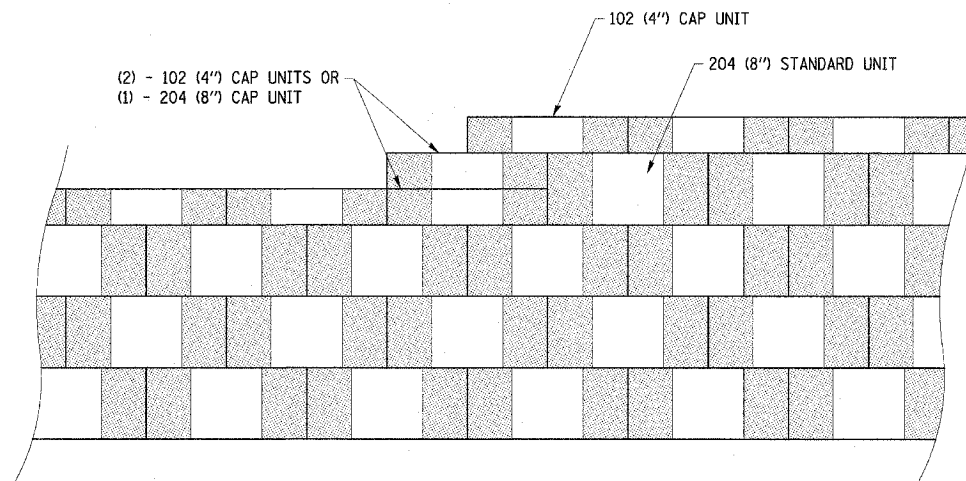
GRID & PIN CONNECTION

If Required Due to Soil Conditions



STANDARD TRI-PLANE UNIT/CAP DETAILS

Unit Dimensions & Weight May Vary by Region



TOP OF WALL STEP DETAIL

Unit Dimensions & Weight May Vary by Region

REVISIONS	
NAME	DATE

ILLINOIS DEPARTMENT OF TRANSPORTATION

MODULAR RETAINING WALL DETAILS

SCALE: NO SCALE
 DATE: APRIL 18, 2008
 DRAWN BY: EDW
 CHECKED BY: RGH

ALL DIMENSIONS ARE IN MILLIMETERS UNLESS OTHERWISE SHOWN.

PLOT DATE = 4/18/2008
 FILE NAME = H:\4420\7000_mdw\wall_detail.dgn