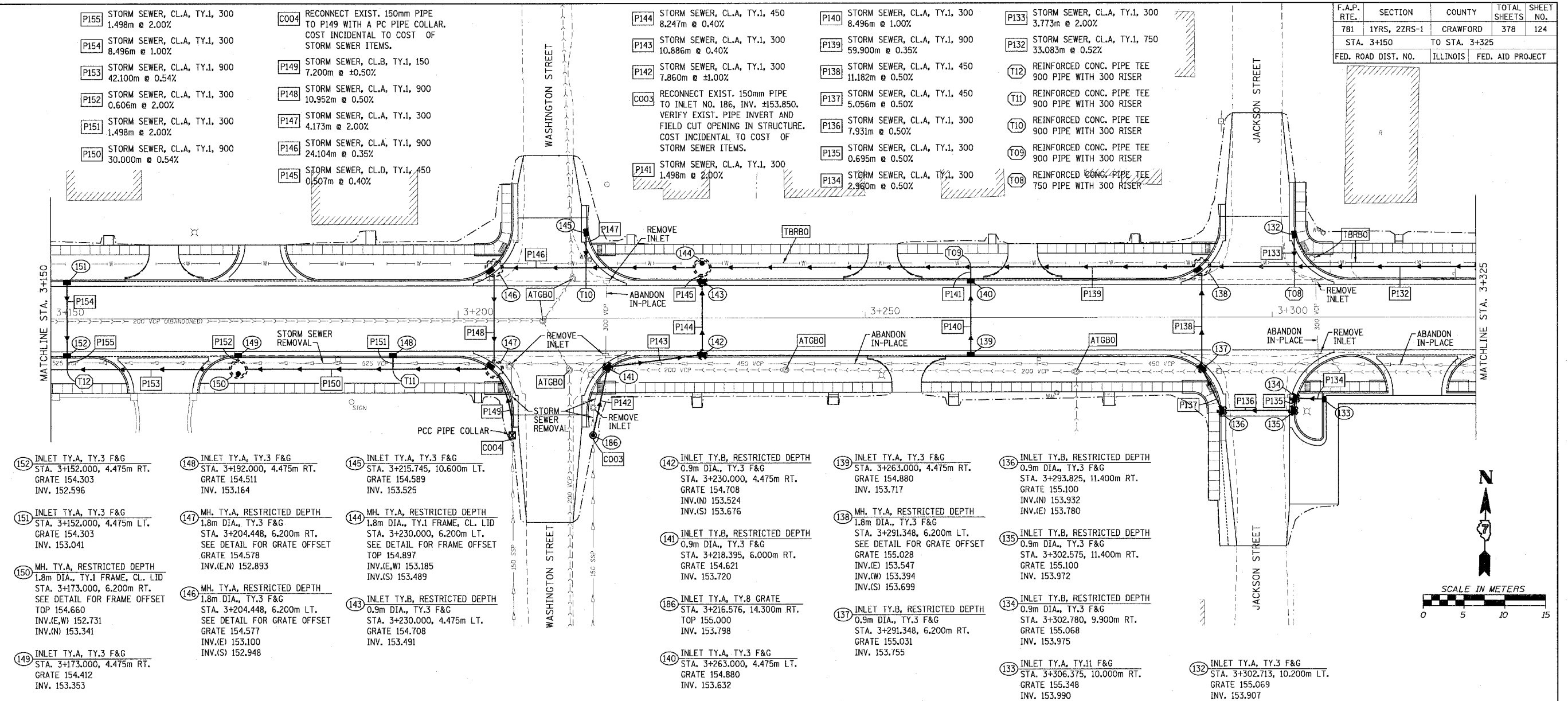
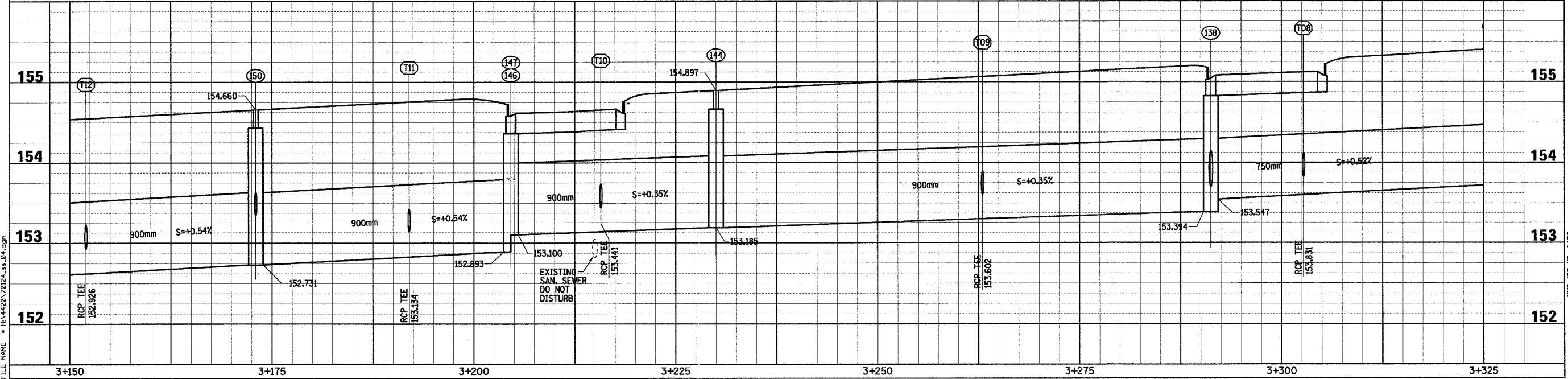
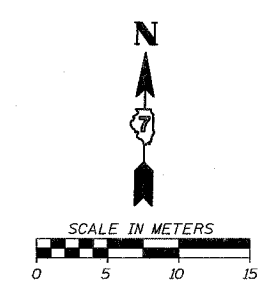


F.A.P. RTE.	SECTION	COUNTY	TOTAL SHEETS	SHEET NO.
781	1YRS, 2ZRS-1	CRAWFORD	378	124
STA. 3+150		TO STA. 3+325		
FED. ROAD DIST. NO.		ILLINOIS	FED. AID PROJECT	



<p>152 INLET TY.A, TY.3 F&G STA. 3+152.000, 4.475m RT. GRATE 154.303 INV. 152.596</p> <p>151 INLET TY.A, TY.3 F&G STA. 3+152.000, 4.475m LT. GRATE 154.303 INV. 153.041</p> <p>150 MH. TY.A, RESTRICTED DEPTH 1.8m DIA., TY.1 FRAME, CL. LID STA. 3+173.000, 6.200m RT. SEE DETAIL FOR FRAME OFFSET TOP 154.660 INV.(E,W) 152.731 INV.(N) 153.341</p> <p>149 INLET TY.A, TY.3 F&G STA. 3+173.000, 4.475m RT. GRATE 154.412 INV. 153.353</p>	<p>148 INLET TY.A, TY.3 F&G STA. 3+192.000, 4.475m RT. GRATE 154.511 INV. 153.164</p> <p>147 MH. TY.A, RESTRICTED DEPTH 1.8m DIA., TY.3 F&G STA. 3+204.448, 6.200m RT. SEE DETAIL FOR GRATE OFFSET GRATE 154.578 INV.(E,N) 152.893</p> <p>146 MH. TY.A, RESTRICTED DEPTH 1.8m DIA., TY.3 F&G STA. 3+204.448, 6.200m LT. SEE DETAIL FOR GRATE OFFSET GRATE 154.577 INV.(E) 153.100 INV.(S) 152.948</p>	<p>145 INLET TY.A, TY.3 F&G STA. 3+215.745, 10.600m LT. GRATE 154.589 INV. 153.525</p> <p>144 MH. TY.A, RESTRICTED DEPTH 1.8m DIA., TY.1 FRAME, CL. LID STA. 3+230.000, 6.200m LT. SEE DETAIL FOR FRAME OFFSET TOP 154.897 INV.(E,W) 153.185 INV.(S) 153.489</p> <p>143 INLET TY.B, RESTRICTED DEPTH 0.9m DIA., TY.3 F&G STA. 3+230.000, 4.475m LT. GRATE 154.708 INV. 153.491</p>	<p>142 INLET TY.B, RESTRICTED DEPTH 0.9m DIA., TY.3 F&G STA. 3+230.000, 4.475m RT. GRATE 154.708 INV.(N) 153.524 INV.(S) 153.676</p> <p>141 INLET TY.B, RESTRICTED DEPTH 0.9m DIA., TY.3 F&G STA. 3+218.395, 6.000m RT. GRATE 154.621 INV. 153.720</p> <p>138 INLET TY.A, TY.8 GRATE STA. 3+216.576, 14.300m RT. TOP 155.000 INV. 153.798</p> <p>140 INLET TY.A, TY.3 F&G STA. 3+263.000, 4.475m LT. GRATE 154.880 INV. 153.632</p>	<p>139 INLET TY.A, TY.3 F&G STA. 3+263.000, 4.475m RT. GRATE 154.880 INV. 153.717</p> <p>138 MH. TY.A, RESTRICTED DEPTH 1.8m DIA., TY.3 F&G STA. 3+291.348, 6.200m LT. SEE DETAIL FOR GRATE OFFSET GRATE 155.028 INV.(E) 153.547 INV.(W) 153.394 INV.(S) 153.699</p> <p>137 INLET TY.B, RESTRICTED DEPTH 0.9m DIA., TY.3 F&G STA. 3+291.348, 6.200m RT. GRATE 155.031 INV. 153.755</p>	<p>136 INLET TY.B, RESTRICTED DEPTH 0.9m DIA., TY.3 F&G STA. 3+293.825, 11.400m RT. GRATE 155.100 INV.(N) 153.932 INV.(E) 153.780</p> <p>135 INLET TY.B, RESTRICTED DEPTH 0.9m DIA., TY.3 F&G STA. 3+302.575, 11.400m RT. GRATE 155.100 INV. 153.972</p> <p>134 INLET TY.B, RESTRICTED DEPTH 0.9m DIA., TY.3 F&G STA. 3+302.780, 9.900m RT. GRATE 155.068 INV. 153.975</p>	<p>133 INLET TY.A, TY.11 F&G STA. 3+306.375, 10.000m RT. GRATE 155.348 INV. 153.990</p> <p>132 INLET TY.A, TY.3 F&G STA. 3+302.713, 10.200m LT. GRATE 155.069 INV. 153.907</p>
---	---	--	---	--	--	--



Sheet 4
Angle: 0.9785
Chain: P_IL33

PLOT DATE = 3/20/2008
FILE NAME = H:\4428\78124_ss_04.dgn

HMG JOB NO. 4420