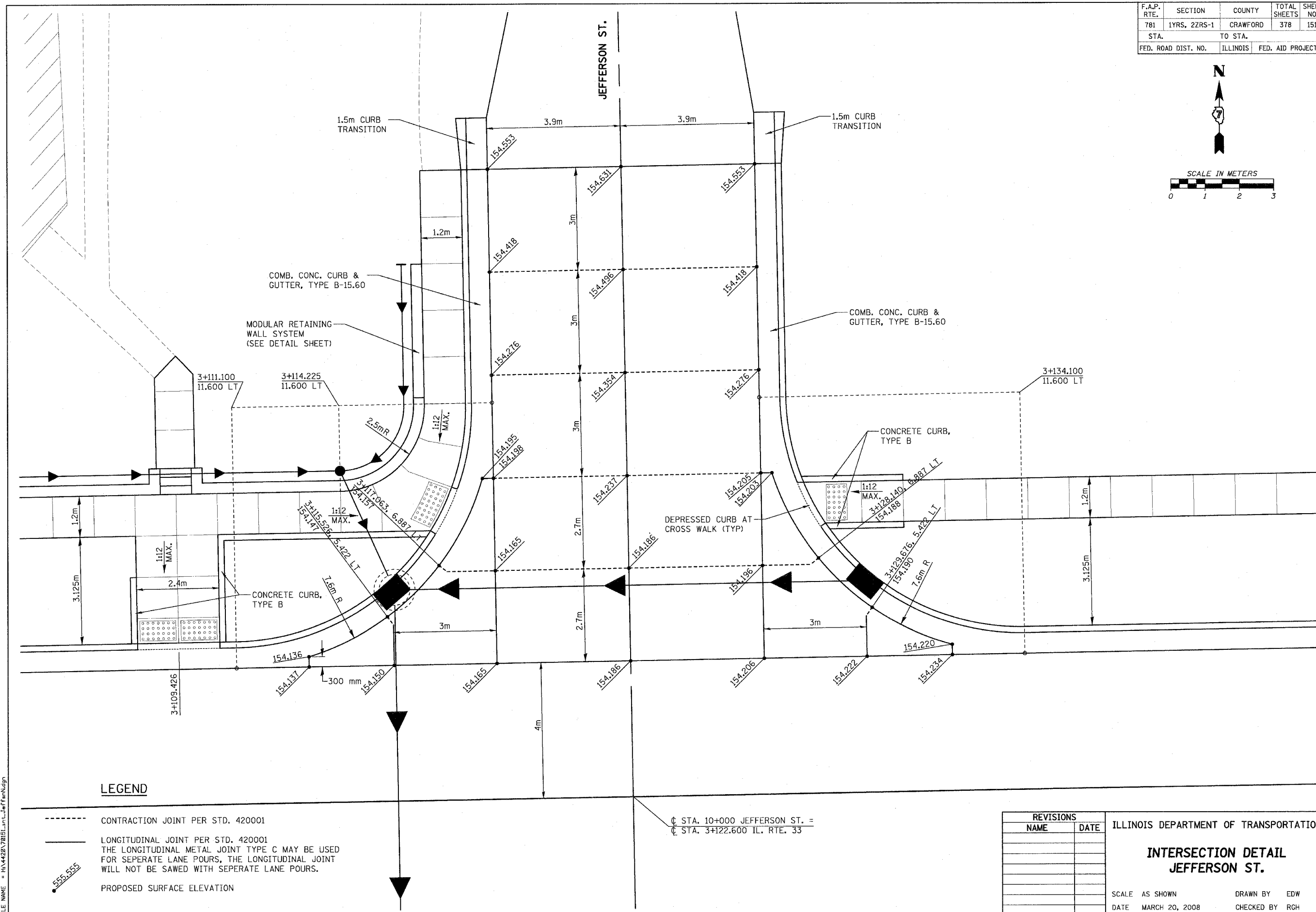
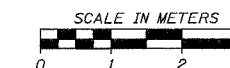


F.A.P. RTE.	SECTION	COUNTY	TOTAL SHEETS	SHEET NO.
781	1YRS, 2ZRS-1	CRAWFORD	378	151
STA.		TO STA.		
FED. ROAD DIST. NO.	ILLINOIS	FED. AID PROJECT		



LEGEND

- CONTRACTION JOINT PER STD. 420001
- LONGITUDINAL JOINT PER STD. 420001
THE LONGITUDINAL METAL JOINT TYPE C MAY BE USED FOR SEPARATE LANE POURS, THE LONGITUDINAL JOINT WILL NOT BE SAWED WITH SEPARATE LANE POURS.
- ▲ PROPOSED SURFACE ELEVATION

Ⓢ STA. 10+000 JEFFERSON ST. =
 Ⓢ STA. 3+122.600 IL. RTE. 33

REVISIONS	
NAME	DATE

ILLINOIS DEPARTMENT OF TRANSPORTATION

**INTERSECTION DETAIL
JEFFERSON ST.**

SCALE AS SHOWN DRAWN BY EDW
DATE MARCH 20, 2008 CHECKED BY RGH

PLOT DATE = 3/20/2008
 FILE NAME = H:\4428\70151\int_jeff.mxd

H. M. & G. NO. 4420