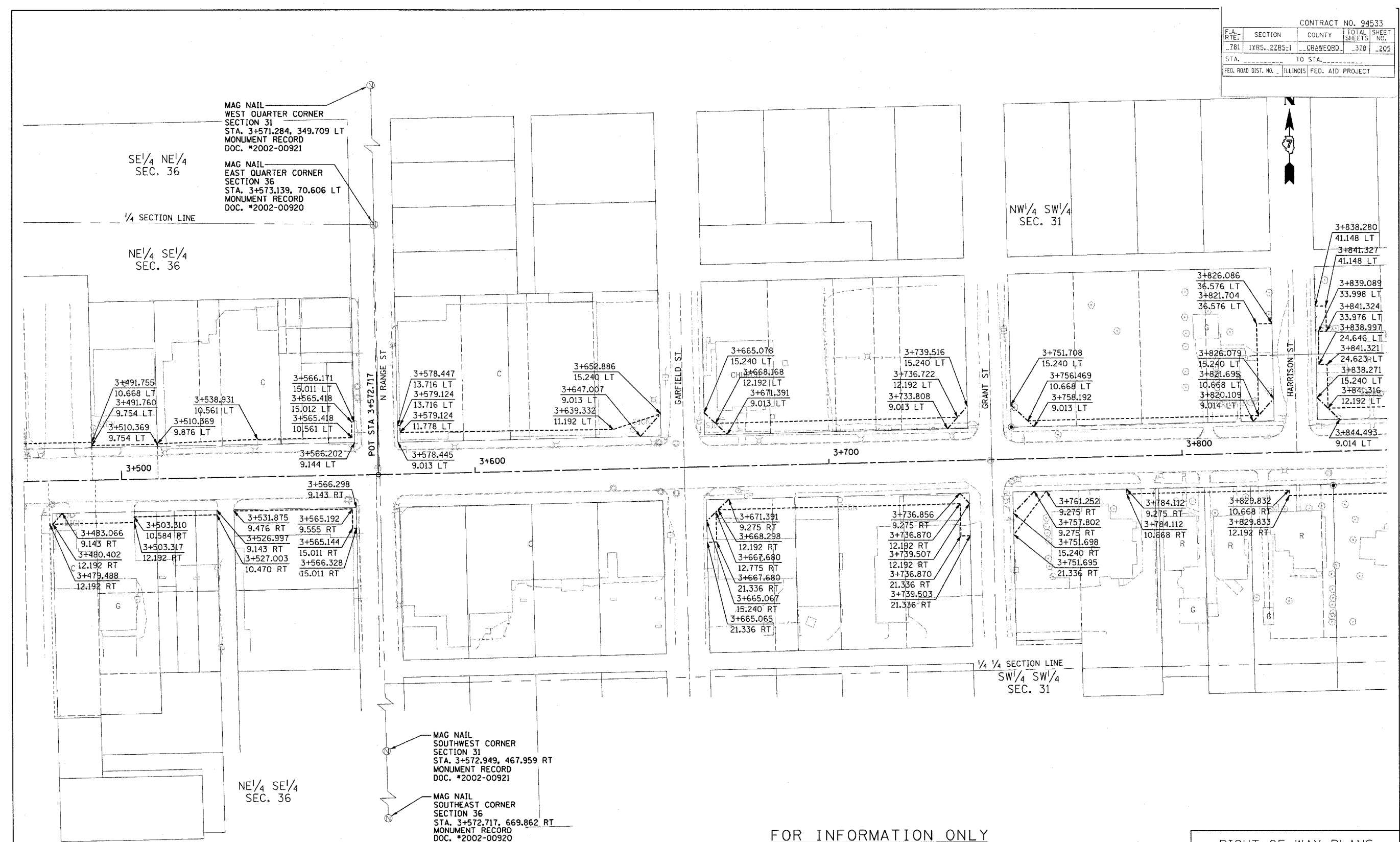


| | | | |
|---------------------|---------------|------------------|-----------------|
| CONTRACT NO. 94533 | | | |
| F.A. RTE. | SECTION | COUNTY | TOTAL SHEET NO. |
| 781 | 1YRS., 2ZRS-1 | CRAWFORD | 378 209 |
| STA. | TO STA. | | |
| FED. ROAD DIST. NO. | ILLINOIS | FED. AID PROJECT | |



FOR INFORMATION ONLY

THESE METRIC RIGHT-OF-WAY PLANS ARE FOR INFORMATION ONLY. THEY WERE DEVELOPED FROM THE OFFICIAL ENGLISH VERSION OF THE RIGHT-OF-WAY PLANS. STATIONING AND DIMENSIONS CONVERTED TO METRIC. FINAL RIGHT-OF-WAY SHALL BE DETERMINED BY THE ORIGINAL ENGLISH PLANS.

RIGHT OF WAY PLANS
FAP ROUTE 781
 PROJECT SECTION 1YRS., 2ZRS-1
 STATION 3+475 TO
 STATION 3+855
 COUNTY CRAWFORD
 SCALE 1:500 SHEET 5 OF 22