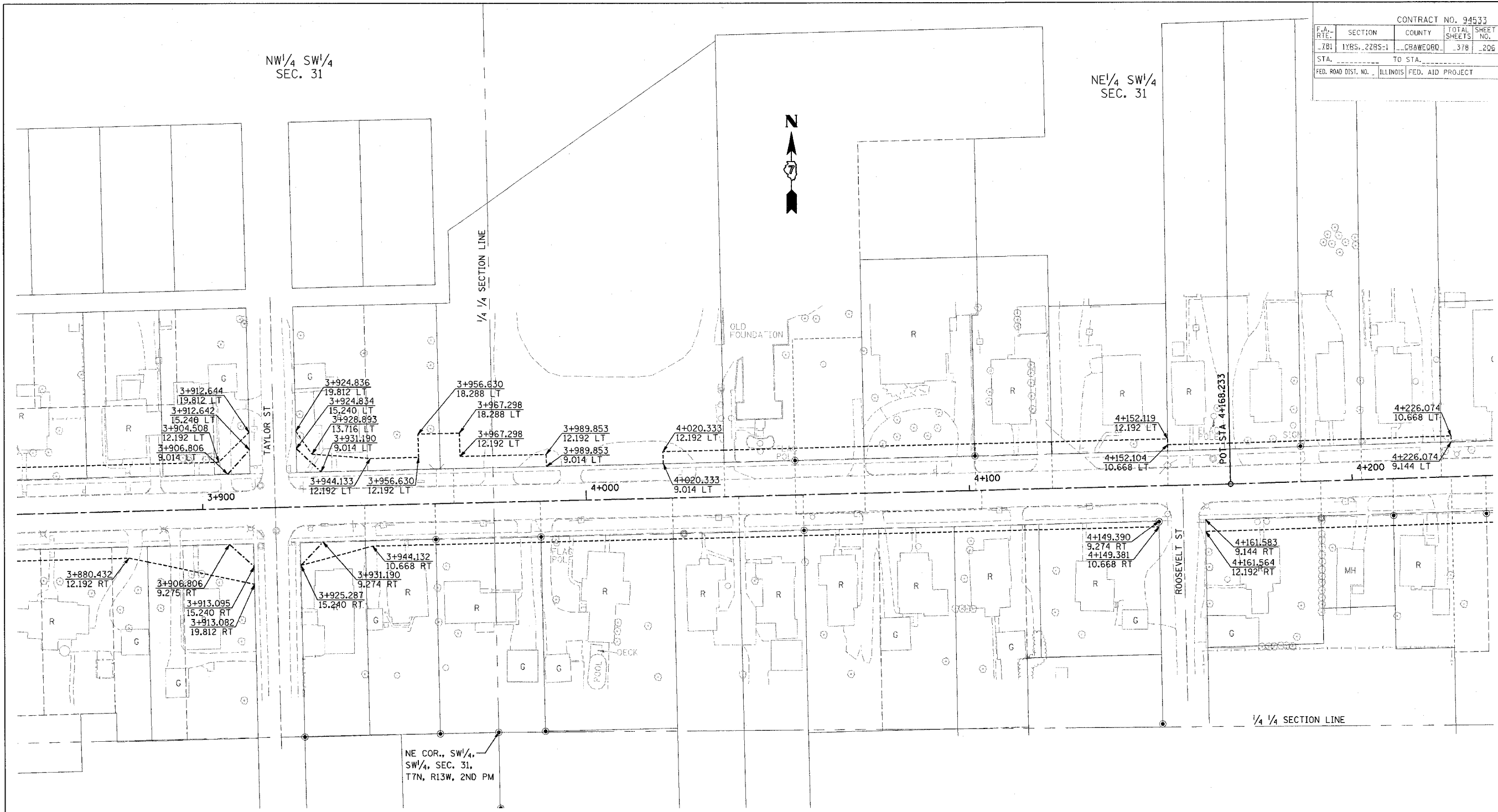


CONTRACT NO. 94533				
F.A. RTE.	SECTION	COUNTY	TOTAL SHEETS	SHEET NO.
781	22RS-1	CRAWFORD	378	206
STA.	TO STA.			
FED. ROAD DIST. NO.	ILLINOIS	FED. AID PROJECT		



FOR INFORMATION ONLY

THESE METRIC RIGHT-OF-WAY PLANS ARE FOR INFORMATION ONLY. THEY WERE DEVELOPED FROM THE OFFICIAL ENGLISH VERSION OF THE RIGHT-OF-WAY PLANS. STATIONING AND DIMENSIONS CONVERTED TO METRIC. FINAL RIGHT-OF-WAY SHALL BE DETERMINED BY THE ORIGINAL ENGLISH PLANS.

CONTRACT NO. 94533

RIGHT OF WAY PLANS
FAP ROUTE 781
 PROJECT SECTION 1YRS, 22RS-1
 TO STATION 3+855
 TO STATION 4+235
 COUNTY CRAWFORD
 SCALE 1:500 SHEET 6 OF 22