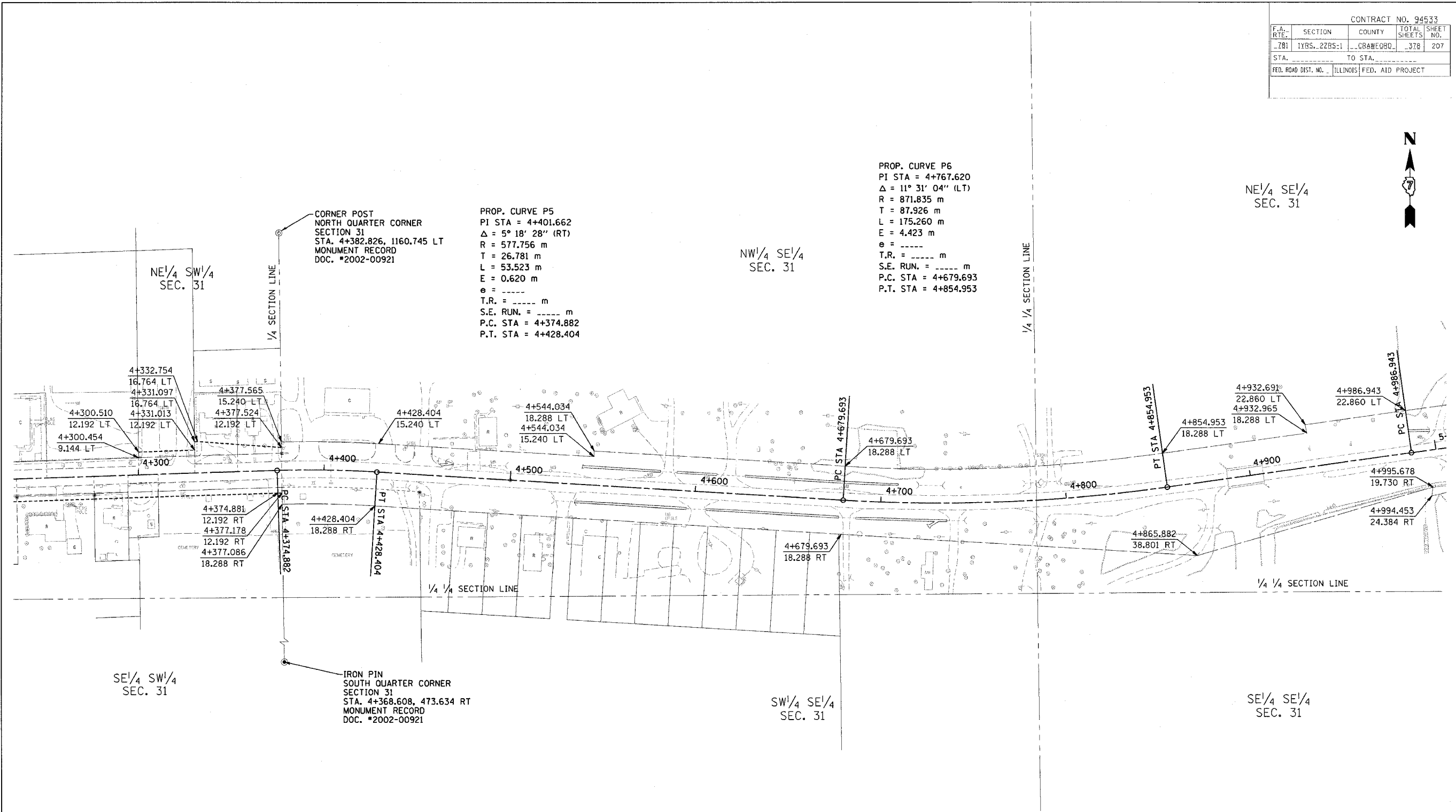


CONTRACT NO. 94533			
F.A. RTE.	SECTION	COUNTY	TOTAL SHEET NO.
781	1YRS. 2ZRS-1	CRAWFORD	378 207
STA.	TO STA.		
FED. ROAD DIST. NO.	ILLINOIS	FED. AID PROJECT	



**FOR INFORMATION ONLY**

THESE METRIC RIGHT-OF-WAY PLANS ARE FOR INFORMATION ONLY. THEY WERE DEVELOPED FROM THE OFFICIAL ENGLISH VERSION OF THE RIGHT-OF-WAY PLANS. STATIONING AND DIMENSIONS CONVERTED TO METRIC. FINAL RIGHT-OF-WAY SHALL BE DETERMINED BY THE ORIGINAL ENGLISH PLANS.

CONTRACT NO. 94533

RIGHT OF WAY PLANS  
 FAP ROUTE 781  
 PROJECT SECTION 1YRS. 2ZRS-1  
 STATION 4+235 TO  
 STATION 5+000  
 COUNTY CRAWFORD  
 SCALE 1:1000 SHEET 7 OF 22