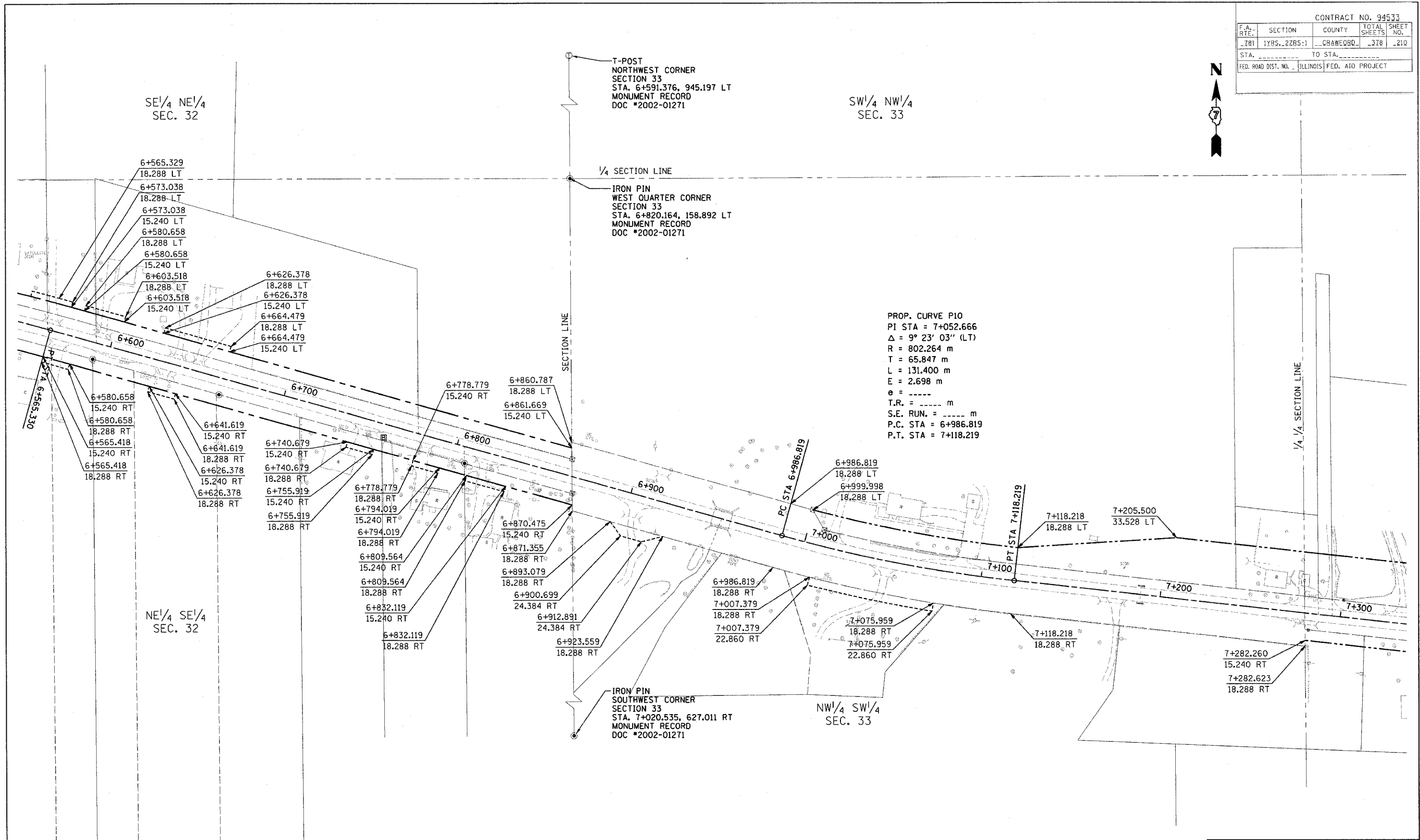


CONTRACT NO. 94533

P.A. RTE.	SECTION	COUNTY	TOTAL SHEETS	SHEET NO.
781	1YRS-2ZRS-1	CRAWFORD	378	210
STA.	TO STA.			
FED. ROAD DIST. NO.	ILLINOIS	FED. AID PROJECT		



FOR INFORMATION ONLY

THESE METRIC RIGHT-OF-WAY PLANS ARE FOR INFORMATION ONLY. THEY WERE DEVELOPED FROM THE OFFICIAL ENGLISH VERSION OF THE RIGHT-OF-WAY PLANS. STATIONING AND DIMENSIONS CONVERTED TO METRIC. FINAL RIGHT-OF-WAY SHALL BE DETERMINED BY THE ORIGINAL ENGLISH PLANS.

**RIGHT OF WAY PLANS
FAP ROUTE 781**

PROJECT SECTION 1YRS, 2ZRS-1
STATION 6+555 TO STATION 7+335
COUNTY CRAWFORD
SCALE 1:1000 SHEET 10 OF 22

CONTRACT NO. 94533