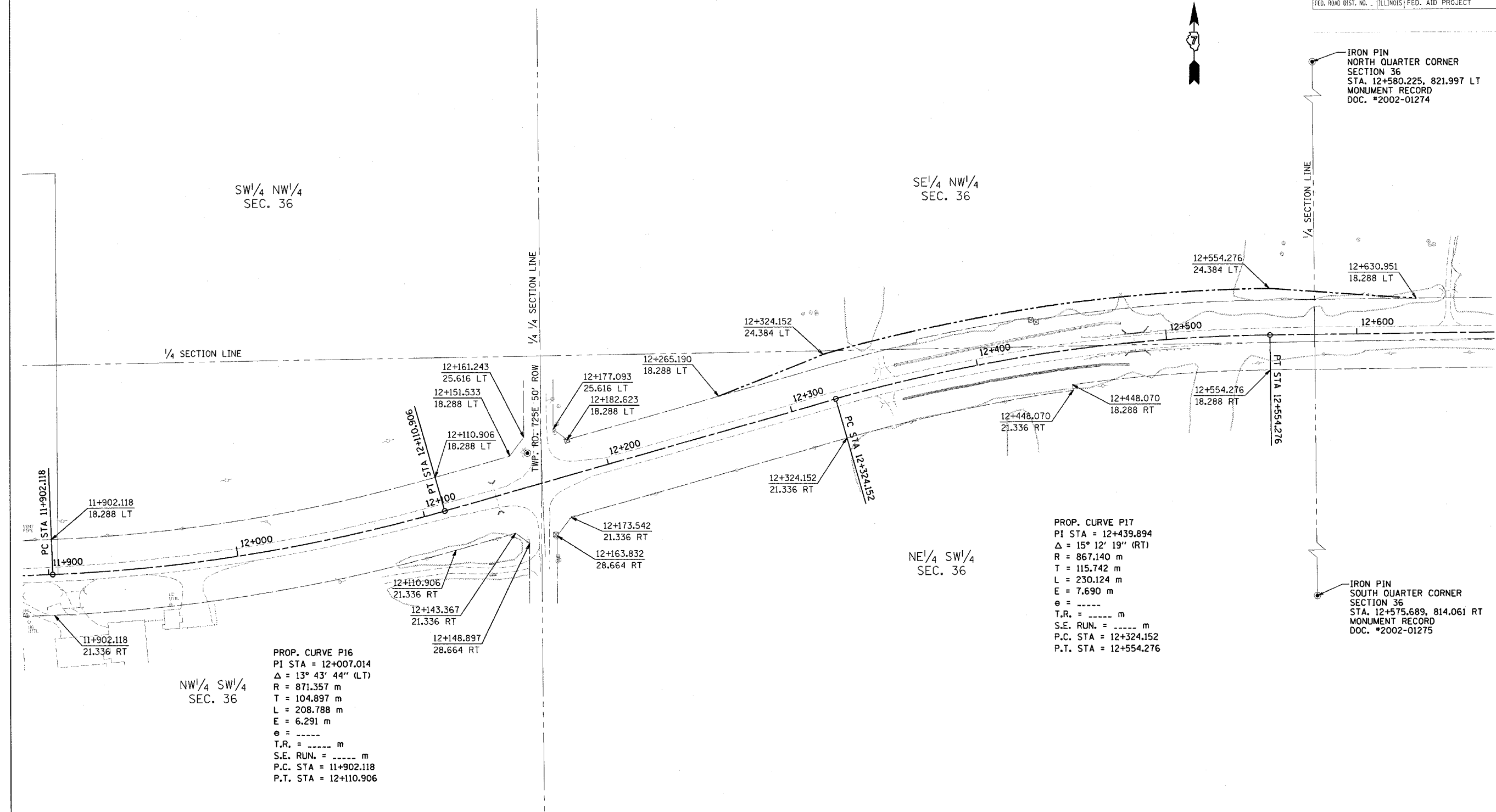


| | | | |
|---------------------|----------|------------------|-----|
| CONTRACT NO. 94533 | | | |
| F.A. SECTION | COUNTY | TOTAL SHEET | NO. |
| 781 1YRS-2ZRS-1 | CRAWFORD | 378 | 217 |
| STA. | TO STA. | | |
| FED. ROAD DIST. NO. | ILLINOIS | FED. AID PROJECT | |



PROP. CURVE P16
 PI STA = 12+007.014
 $\Delta = 13^\circ 43' 44''$ (LT)
 R = 871.357 m
 T = 104.897 m
 L = 208.788 m
 E = 6.291 m
 $e = \dots$
 T.R. = \dots m
 S.E. RUN. = \dots m
 P.C. STA = 11+902.118
 P.T. STA = 12+110.906

PROP. CURVE P17
 PI STA = 12+439.894
 $\Delta = 15^\circ 12' 19''$ (RT)
 R = 867.140 m
 T = 115.742 m
 L = 230.124 m
 E = 7.690 m
 $e = \dots$
 T.R. = \dots m
 S.E. RUN. = \dots m
 P.C. STA = 12+324.152
 P.T. STA = 12+554.276

IRON PIN
 NORTH QUARTER CORNER
 SECTION 36
 STA. 12+580.225, 821.997 LT
 MONUMENT RECORD
 DOC. #2002-01274

IRON PIN
 SOUTH QUARTER CORNER
 SECTION 36
 STA. 12+575.689, 814.061 RT
 MONUMENT RECORD
 DOC. #2002-01275

FOR INFORMATION ONLY

THESE METRIC RIGHT-OF-WAY PLANS ARE FOR INFORMATION ONLY. THEY WERE DEVELOPED FROM THE OFFICIAL ENGLISH VERSION OF THE RIGHT-OF-WAY PLANS. STATIONING AND DIMENSIONS CONVERTED TO METRIC. FINAL RIGHT-OF-WAY SHALL BE DETERMINED BY THE ORIGINAL ENGLISH PLANS.

RIGHT OF WAY PLANS
 FAP ROUTE 781
 PROJECT SECTION 1YRS, 2ZRS-1
 STATION 11+895 TO STATION 12+670
 COUNTY CRAWFORD
 SCALE 1:1000 SHEET 17 OF 22