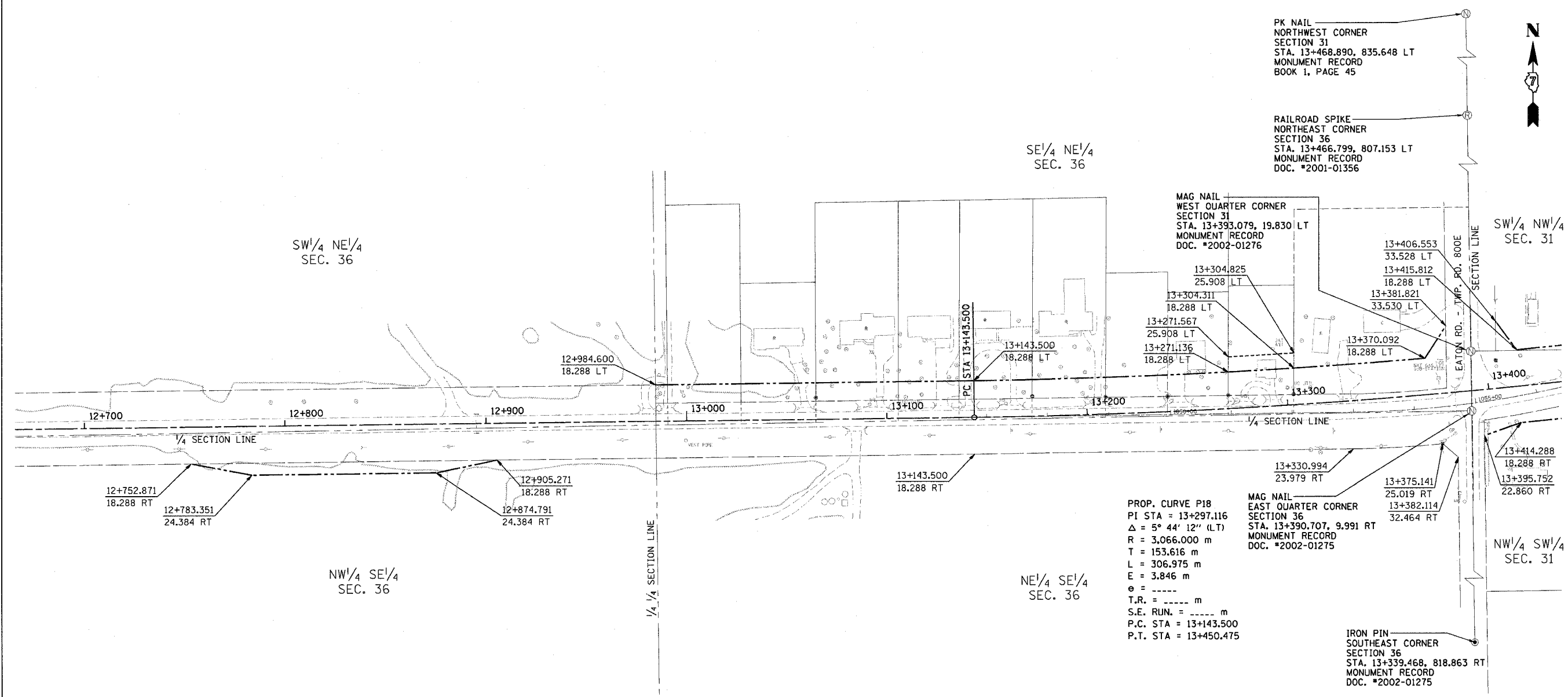


CONTRACT NO. 94533			
F.A. RT#	SECTION	COUNTY	TOTAL SHEET NO.
781	1YRS, 22RS-1	CRAWFORD	378 218
STA.	TO STA.		
FED. ROAD DIST. NO.	ILLINOIS FED. AID PROJECT		



FOR INFORMATION ONLY

THESE METRIC RIGHT-OF-WAY PLANS ARE FOR INFORMATION ONLY. THEY WERE DEVELOPED FROM THE OFFICIAL ENGLISH VERSION OF THE RIGHT-OF-WAY PLANS. STATIONING AND DIMENSIONS CONVERTED TO METRIC. FINAL RIGHT-OF-WAY SHALL BE DETERMINED BY THE ORIGINAL ENGLISH PLANS.

RIGHT OF WAY PLANS	
FAP ROUTE 781	
PROJECT	SECTION 1YRS, 22RS-1
STATION 12+670	TO
STATION 13+430	
COUNTY CRAWFORD	
SCALE 1:1000	SHEET 18 OF 22