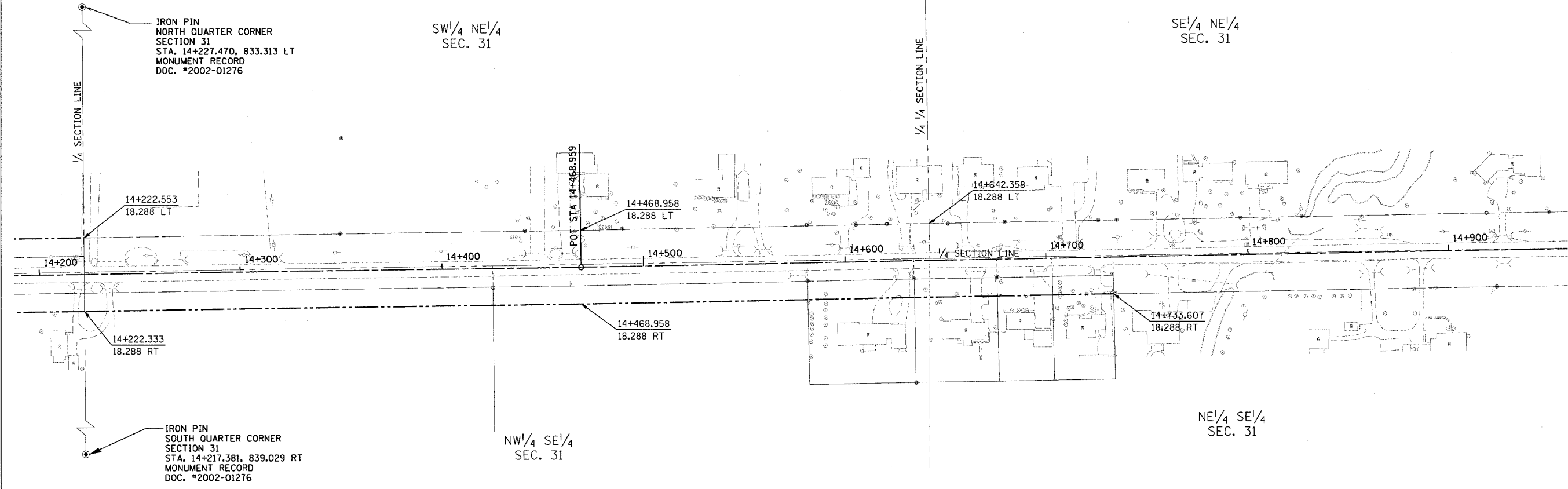


| | | | |
|---------------------|--------------|---------------------------|-----------------|
| CONTRACT NO. 94533 | | | |
| F.A. RITE | SECTION | COUNTY | TOTAL SHEET NO. |
| 781 | 1YRS, 2ZRS-1 | CRAWFORD | 378 - 229 |
| STA. | | TO STA. | |
| FED. ROAD DIST. NO. | | ILLINOIS FED. AID PROJECT | |



FOR INFORMATION ONLY

THESE METRIC RIGHT-OF-WAY PLANS ARE FOR INFORMATION ONLY. THEY WERE DEVELOPED FROM THE OFFICIAL ENGLISH VERSION OF THE RIGHT-OF-WAY PLANS. STATIONING AND DIMENSIONS CONVERTED TO METRIC. FINAL RIGHT-OF-WAY SHALL BE DETERMINED BY THE ORIGINAL ENGLISH PLANS.

CONTRACT NO. 94533

RIGHT OF WAY PLANS
FAP ROUTE 781
PROJECT SECTION 1YRS, 2ZRS-1
STATION 14+195 TO
STATION 14+955
COUNTY CRAWFORD
SCALE 1:1000 SHEET 20 OF 22