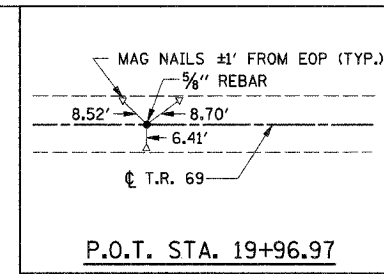
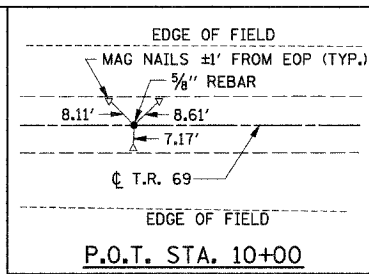


F.A.P. RTE.	SECTION	COUNTY	TOTAL SHEETS	SHEET NO.
TR 69	01-19113-00-BR	SHELBY	12	3
STA.		TO STA.		
FED. ROAD DIST. NO.		ILLINOIS FED. AID PROJECT		



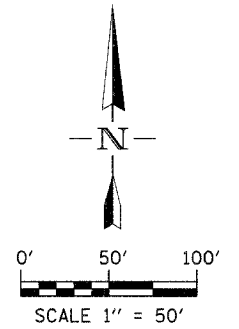
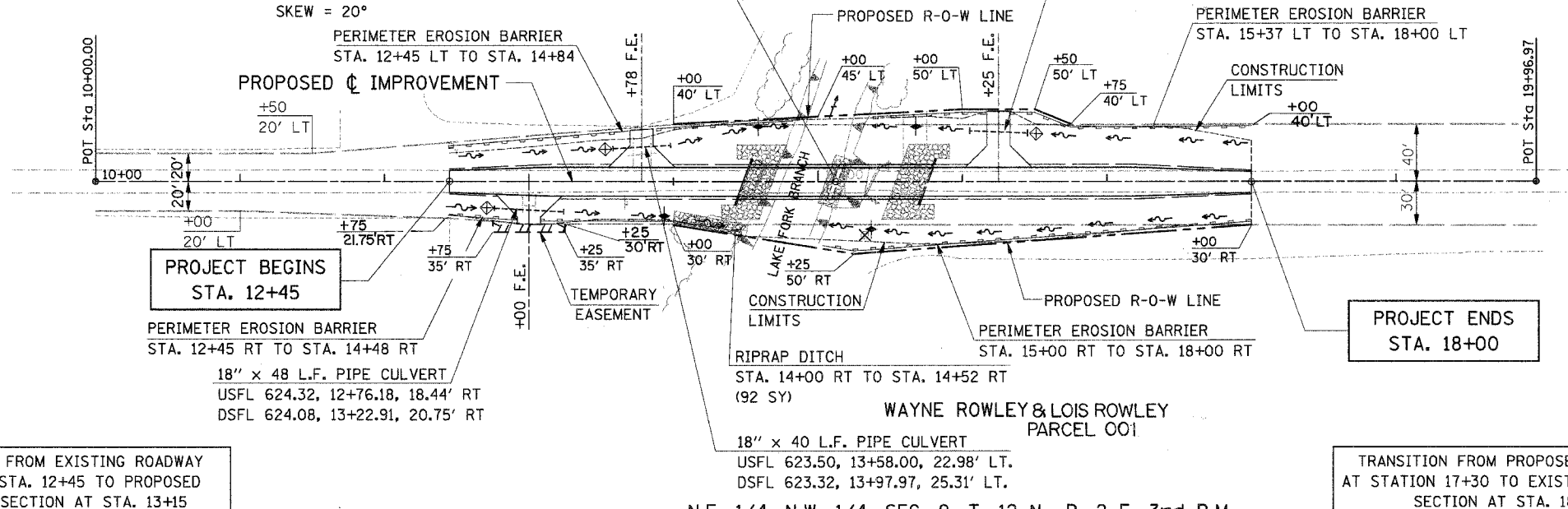
S.E. 1/4, S.W. 1/4, SEC. 4, T. 12 N., R. 2 E. 3rd P.M.

JOHN AND JULIE
HOLTHAUS
PARCEL 002

STA. 15+12.13 - SPECIAL BRIDGE DESIGN

2 - SPAN, 27" P.C.C. DECK BEAM BRIDGE,
2 - 62'-10 1/2" SPANS, 128'-0" BK TO BK
OF ABUTMENTS,
24'-0" CLEAR WIDTH, ON BENT PILE ABUTMENTS.
SKEW = 20°

24" x 40 L.F. PIPE CULVERT
USFL 619.68, 16+05.00, 35.40' LT.
DSFL 619.57, 16+44.98, 33.71' LT.

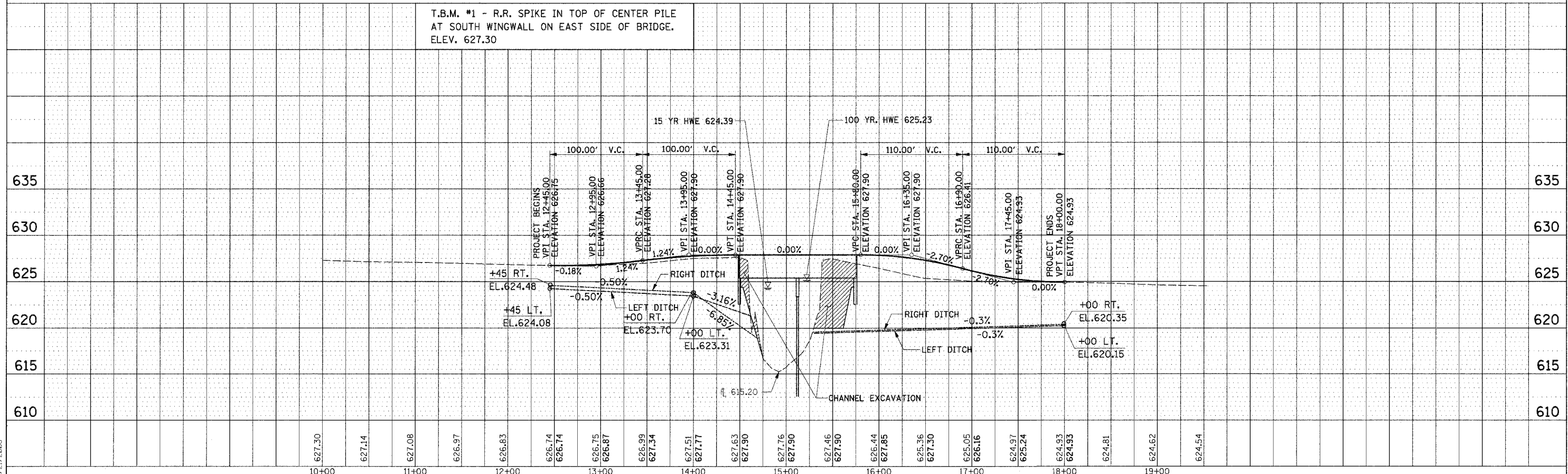


LEGEND

- +— DITCH CHECK
- >— FLOW ARROW
- ▨ RIPRAP

T.B.M. #1 - R.R. SPIKE IN TOP OF CENTER PILE
AT SOUTH WINGWALL ON EAST SIDE OF BRIDGE.
ELEV. 627.30

N.E. 1/4, N.W. 1/4, SEC. 9, T. 12 N., R. 2 E. 3rd P.M.



PLAN
DESIGNED BY
CHECKED BY
DATE
NOTE BOOK NO.

PROFILE
DESIGNED BY
CHECKED BY
DATE
NOTE BOOK NO.

3/21/2008