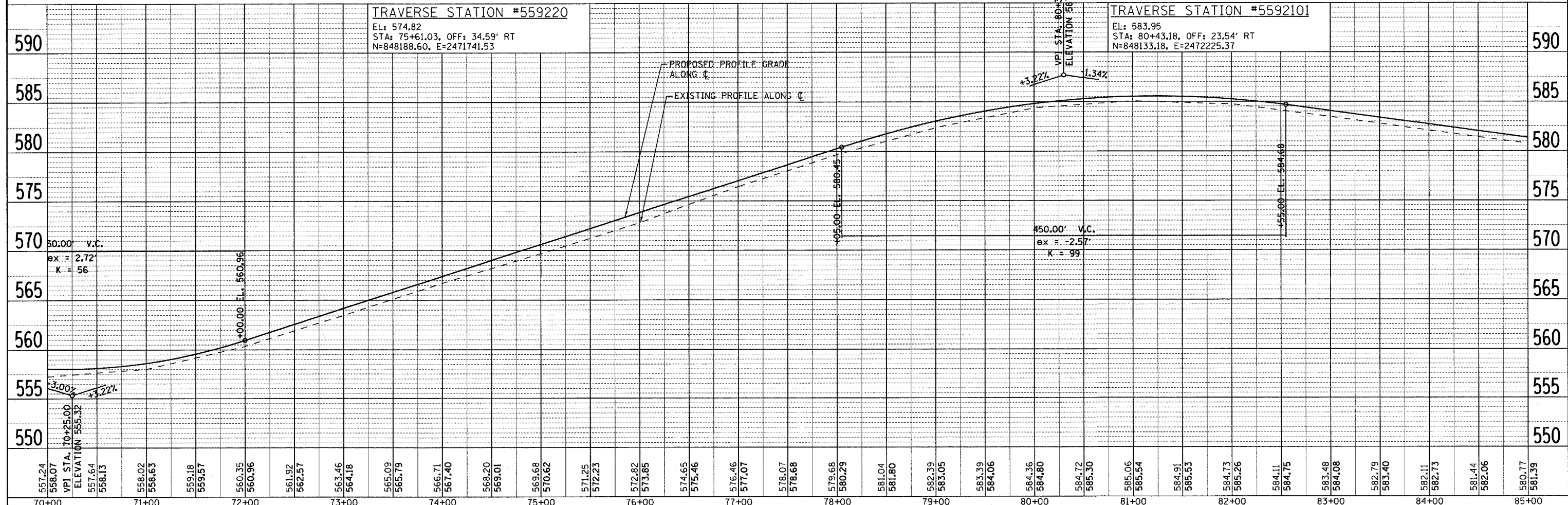
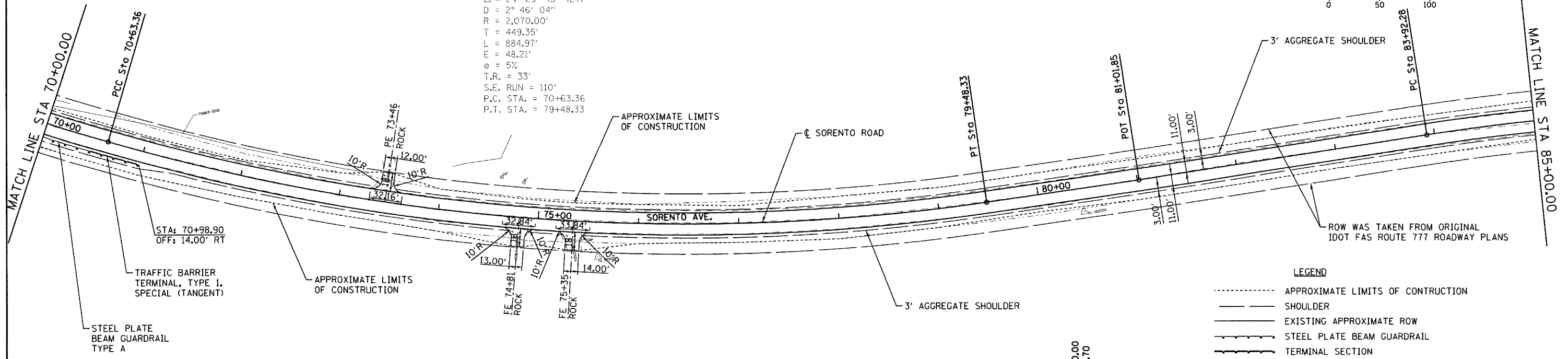
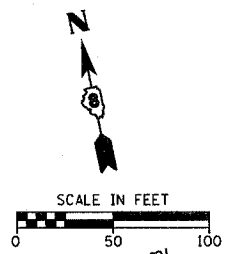


PLAN	SURVEYED	BY	DATE
	PLANNED		
	CHECKED		
	REVISIONS		
	NO. OF WAY CHECKED		
	CADD FILE NAME		
	NO.		

PROFILE	SURVEYED	BY	DATE
	PLANNED		
	CHECKED		
	REVISIONS		
	NO. OF WAY CHECKED		
	CADD FILE NAME		
	NO.		

EXIST. CURVE EXSOR-6
 PI STA. = 75+12.71
 $\Delta = 24^\circ 29' 43''$ (LT)
 $D = 2^\circ 46' 04''$
 $R = 2,070.00'$
 $T = 449.35'$
 $L = 884.97'$
 $E = 48.21'$
 $\theta = 5\%$
 $T.R. = 33'$
 $S.E. RUN = 110'$
 $P.C. STA. = 70+63.36$
 $P.T. STA. = 79+48.33$



FILE NAME = H:\5592\PP_SR_5592_05.dgn	USER NAME = _USERDESCR_	DESIGNED - DLD	REVISED -	STATE OF ILLINOIS DEPARTMENT OF TRANSPORTATION	PLAN & PROFILE - SORENTO ROAD		F.A.S. RTE. 777	SECTION 05-00080-00-R5	COUNTY BOND	TOTAL SHEETS 90	SHEET NO. 19
PLOT SCALE = 50.0000' / IN.	CHECKED - KOJ	REVISED -	REVISED -		SCALE: 50	SHEET NO. OF SHEETS	STA. 70+00 TO STA. 85+00	CONTRACT NO. 97341		FED. ROAD DIST. NO. 8 ILLINOIS FED. AID PROJECT	
PLOI DATE = 3/21/2008	DATE - 1-17-08	REVISED -	REVISED -								

HENRY, MEISENHEIMER & GENDE, INC., 1075 LAKE ROAD, PO BOX 70, CARLYLE, IL 62231 PHONE (618) 594-3711 WWW.HMGENGINEERS.COM