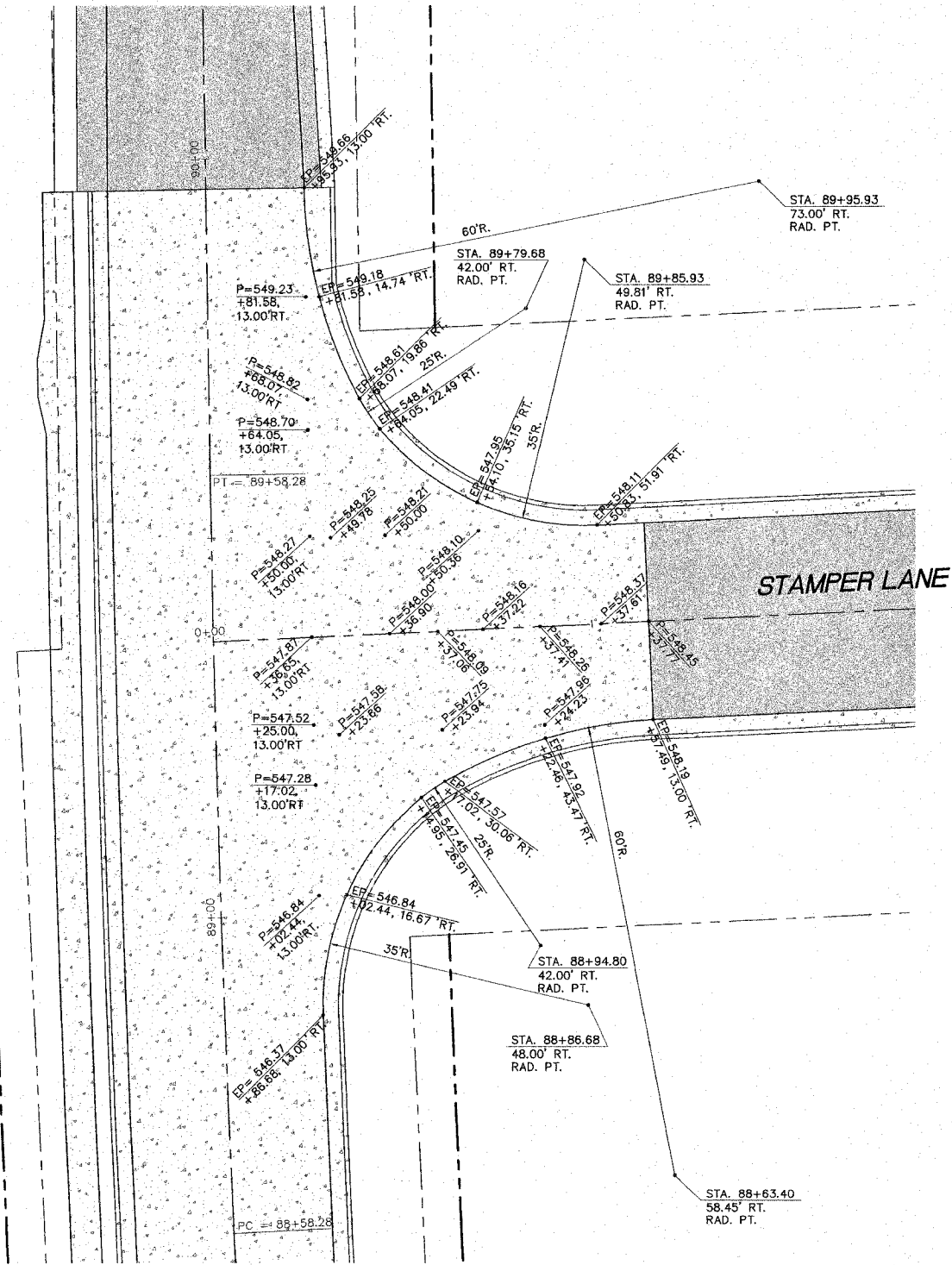
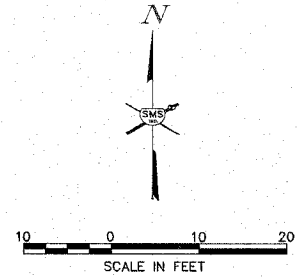


REVISIONS



**SMS** Sheppard, Morgan & Schwaab, Inc.  
 CONSULTING ENGINEERS AND LAND SURVEYORS  
 215 Walnut Street, P.O. Box E, Alton, IL 62902, 618/492-2755, E-mail: [sm@smsengineers.com](mailto:sm@smsengineers.com)  
 10 Central Industrial Drive, Granite City, IL 62040, 618/871-4700, E-mail: [ms@smsengineers.com](mailto:ms@smsengineers.com)  
**ENGINEERS** DESIGN FIRM # 184-000992

PIERCE LANE IMP. (PHASE 3 AND 4)-GODFREY, ILLINOIS  
 FAU ROUTE 8985  
 05-00001-03-PV (PHASE 3) / 06-00001-04-BR (PHASE 4)  
 INTERSECTION DETAIL - PIERCE LANE AND STAMPER LANE

DWG. NO.	PRC PH3 DET CONST.DWG
REF. BK.	PG.
JOB NO.	436613
DSN. BY.	SJW/DDT
CHK. BY.	SJW
DATE.	FEBRUARY, 2008

SCALE: 1"=10'  
 SHEET 27 OF 61