

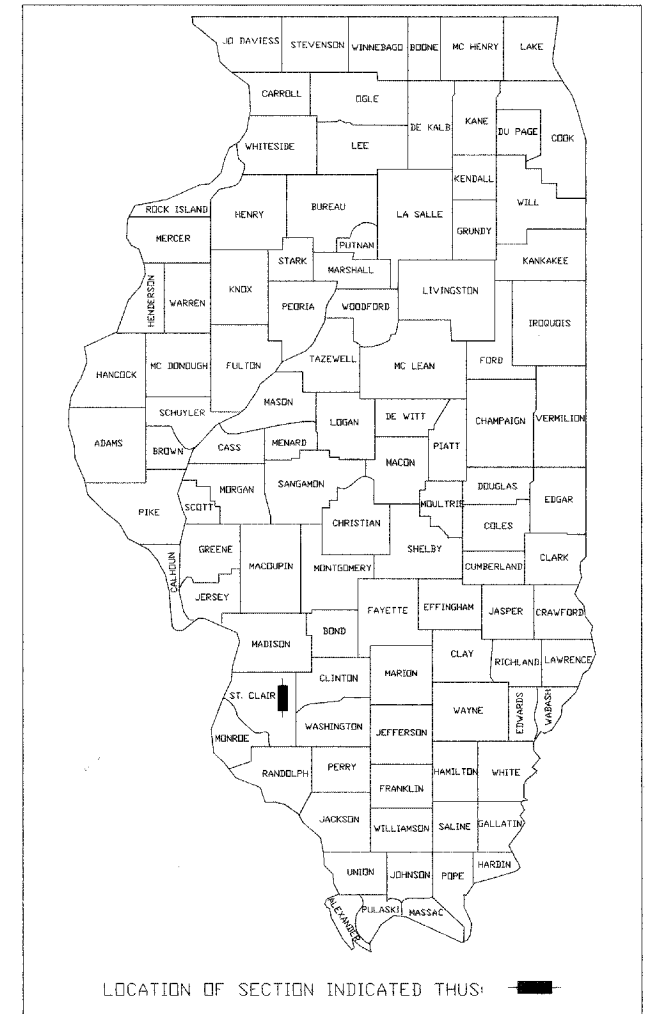
INDEX OF SHEETS

- 1. COVER SHEET
- 2. GENERAL NOTES
- 3-5. SUMMARY OF QUANTITIES
- 6-9. TYPICAL SECTIONS
- 10-14. SCHEDULES OF QUANTITIES
- 15-27. ROADWAY PLAN & PROFILE SHEETS
- 28-31. STAGED CONSTRUCTION AND TRAFFIC CONTROL PLAN
- 32. DETOUR PLANS
- 33-39. PIPE CULVERTS AND EROSION CONTROL PLAN
- 40-41. INTERSECTION DETAILS
- 42-50. PAVEMENT MARKING & SIGNAGE PLANS
- 51-53. BOX CULVERT DETAILS
- 54. ENTRANCE DETAILS
- 55-113. CROSS SECTIONS

STATE OF ILLINOIS DEPARTMENT OF TRANSPORTATION DIVISION OF HIGHWAYS

PLANS FOR PROPOSED FEDERAL AID PROJECT CITY OF MASCOUTAH PROPOSED COUNTY ROAD RECONSTRUCTION FAU ROUTE 9380 SECTION 02-00016-01-PV PROJECT NO. M-5011(249) ST. CLAIR COUNTY JOB NO. C-98-318-08

FAU ROUTE	IDOT SECTION	COUNTY	TOTAL SHEETS	SHEET NO.
9380	02-00016-01-PV	ST. CLAIR	113	1
FEDERAL AID PROJECT			ILLINOIS	
IDOT JOB NO. C-98-318-08				
IDOT CONTRACT NO. 97345				

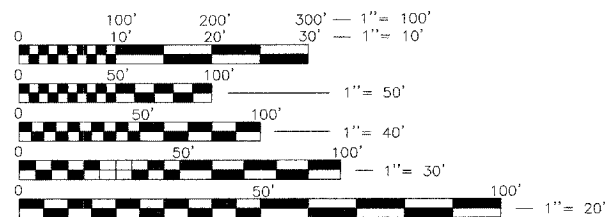


IDOT STANDARDS (ATTACHED AFTER PLANS)

000001-05	604001-02	701001-01	720011
001001-01	604091-01	701006-02	728001
001006	606001-03	701011-01	731001
280001-04	606006-01	701201-02	780001-01
482001-02	606101-03	701301-02	781001-02
542301-01	630001-07	701306-01	BLR 17-3
542306-01	630101-07	701311-02	BLR 18-4
602301-01	630301-04	701501-04	BLR 21-7
602401-01	635006-02	701901	BLR 22-5
602601-01	635011-01	720001	BLR 24-1
602701-01	666001	720006-01	

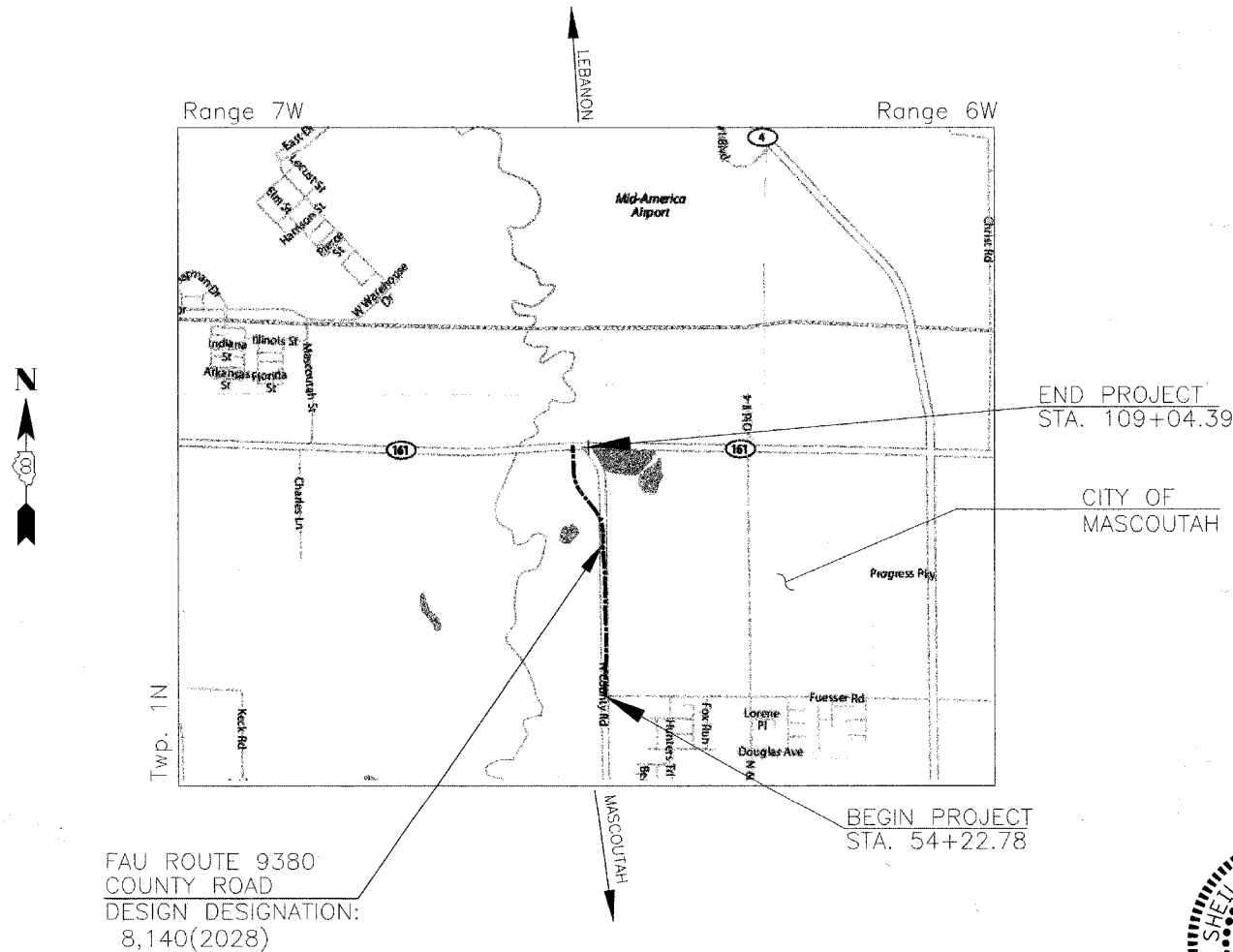
UTILITIES

- TELEPHONE**
VERIZON
111 EAST STATE STREET
MASCOUTAH, IL 62258
(618) 566-9815
- CABLE TV**
CHARTER COMMUNICATIONS
7645 MAGNA DRIVE, SUITE 100
BELLEVILLE, IL 62223
(618) 474-5205
- GAS**
AMEREN IP
2600 N. CENTER STREET
MARYVILLE, IL 62062
(618) 346-1279
- ELECTRIC/WATER/SANITARY SEWER**
CITY OF MASCOUTAH
3 WEST MAIN STREET
MASCOUTAH, IL 62258
(618) 566-2964



FULL SIZE PLANS HAVE BEEN PREPARED USING STANDARD ENGINEERING SCALES, REDUCED SIZED PLANS WILL NOT CONFORM TO STANDARD SCALES, IN MAKING MEASUREMENTS ON REDUCED PLANS, THE ABOVE SCALES MAY BE USED.

J.U.L.I.E.
JOINT UTILITY LOCATION INFORMATION FOR EXCAVATION
1-800-892-0123



FAU ROUTE 9380
COUNTY ROAD
DESIGN DESIGNATION:
8,140(2028)

LOCATION MAP
N.T.S.

COUNTY ROAD
LENGTH OF PROJECT

COUNTY ROAD DESIGN DESIGNATION:
ROADWAY CLASSIFICATION - URBAN COLLECTOR
DESIGN SPEED - 40 MPH
DESIGN TRAFFIC (2028) ADT - 8,140
1.112(FD-20)

COUNTY ROAD
GROSS LENGTH = 5,481.61' (1.038 MILES)
NET LENGTH = 5,481.61' (1.038 MILES)



STATE OF ILLINOIS
DEPARTMENT OF TRANSPORTATION
DIVISION OF HIGHWAYS

APPROVED April 11 2008
By: [Signature]
MAYOR
CITY OF MASCOUTAH

PASSED April 15 2008
[Signature]
DISTRICT 8 ENGINEER
LOCAL ROADS & STREETS

RELEASED FOR
BID BASED ON
LIMITED REVIEW
April 15 2008
[Signature]
DEPUTY DIRECTOR OF HIGHWAYS
REGION FIVE ENGINEER

Sheila J. Kimlinger April 10, 2008
SHEILA J. KIMLINGER, P.E.
LICENSE NO. 062-049175
EXPIRATION DATE
11-30-2009

PREPARED BY:
TWM THOUVENOT, WADE & MOERCHEN, INC.

TWM JOB NO. T20-010154A