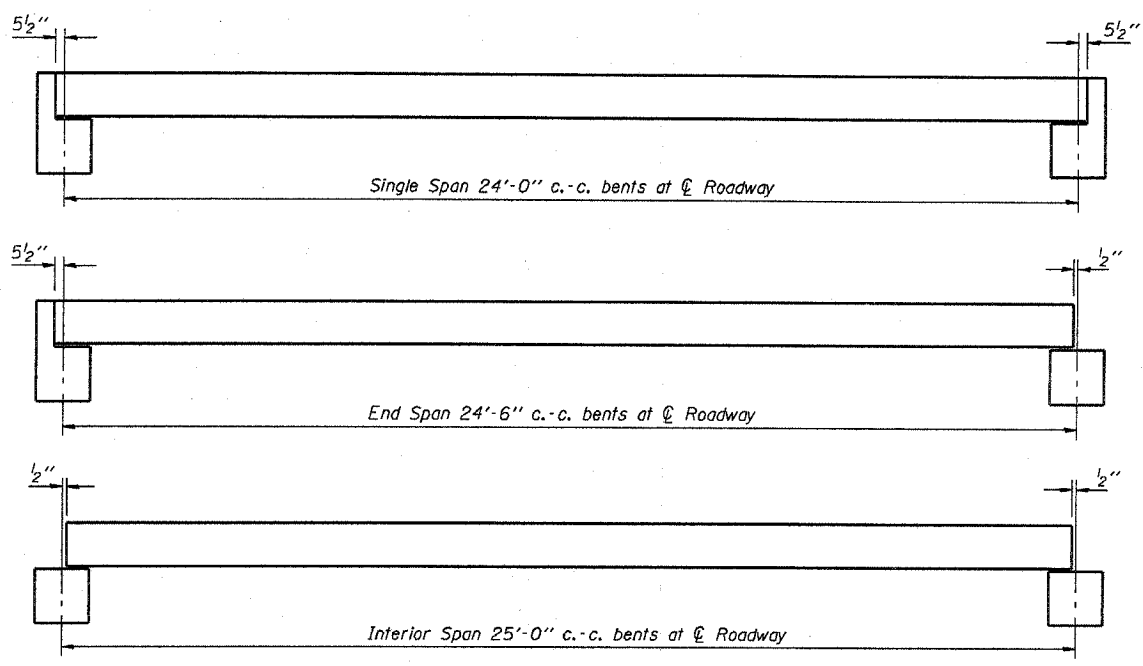
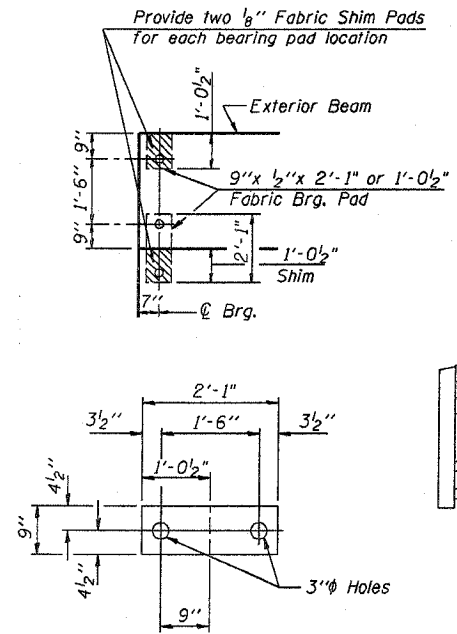


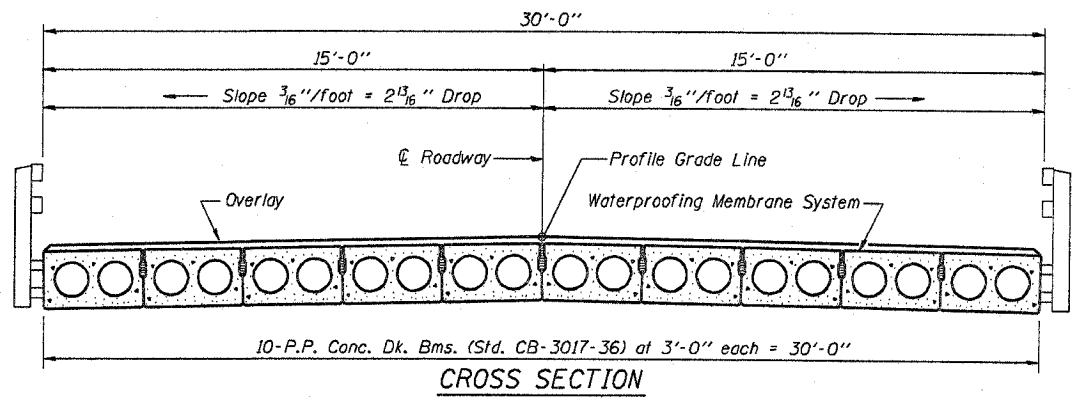
SECTION NO.	COUNTY HIGHWAY	COUNTY	SHEET OF SHEETS
00-00261-02-BR	83	ST. CLAIR	5 OF 14
FHWA REG. NO.	ILLINOIS	PROJ. BROS-163(30)	
FEDERAL AID PROJECT	CONTRACT # 97346		
SUPERSTRUCTURE DETAILS			



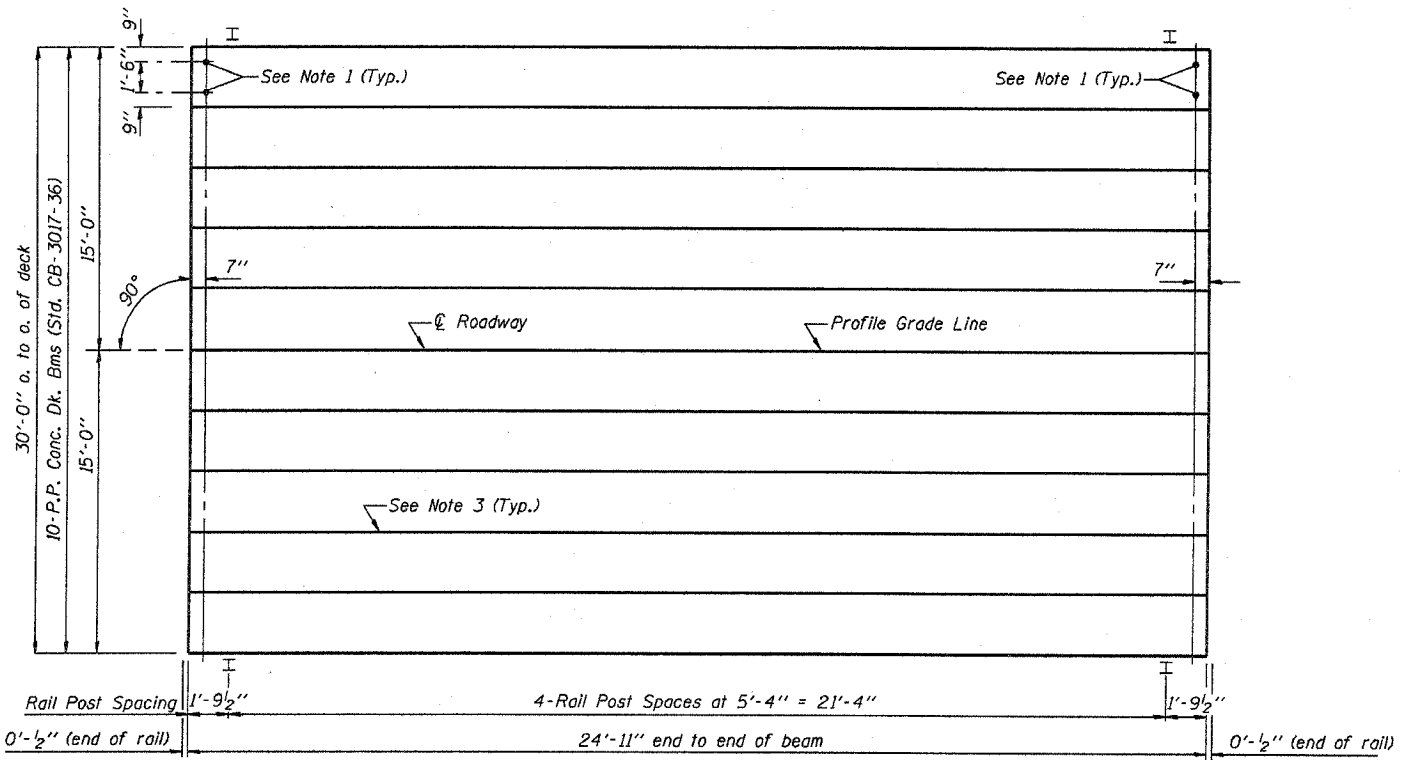
TYPICAL ELEVATIONS



1/2" FABRIC BRG. PAD DETAILS



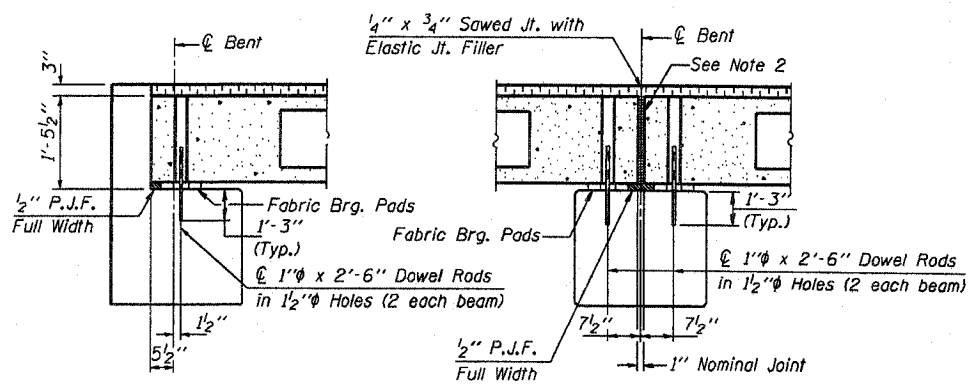
CROSS SECTION



PLAN

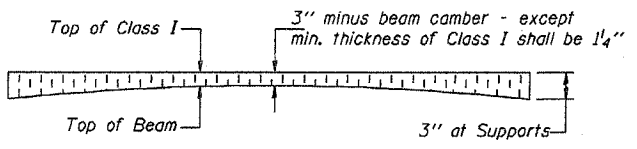
NOTES

1. After beams have been erected, holes shall be drilled into substructure and anchor dowels placed. Dowel holes shall be filled with non-shrink grout to top of beam and allowed to cure min. 24 hrs. prior to grouting the shear keys.
2. Nominal 1" joint at centerline Pier shall be filled with non-shrink grout.
3. Longitudinal keys shall be grouted.



SECTION AT ABUTS.
(Along centerline Beams)

SECTION AT PIERS
(Along centerline Beams)



PROFILE OF OVERLAY

QUANTITIES FOR ONE SPAN

P.P. Conc. Dk. Bm. 17" Dp.	750 Sq. Ft.
Steel Railing	50 Ft.
Waterproofing Membrane System	83.4 Sq. Yds.
Portland Cement Mortar	
Fairing Course	225 Ft.

Note: Quantity of overlay for one span = 13.6 Tons

P.P.C. DECK BEAM SUPERSTRUCTURE			
30' RDWY.	17" BMS.	25' SPAN	0° SKEW
STANDARD CS-3017-25			

Illinois Department of Transportation

PASSED APRIL 4, 2005
Thomas J. Romanowski
 Engineer of Bridge Design

APPROVED APRIL 4, 2005
Ralph E. Anderson
 Engineer of Bridges and Structures