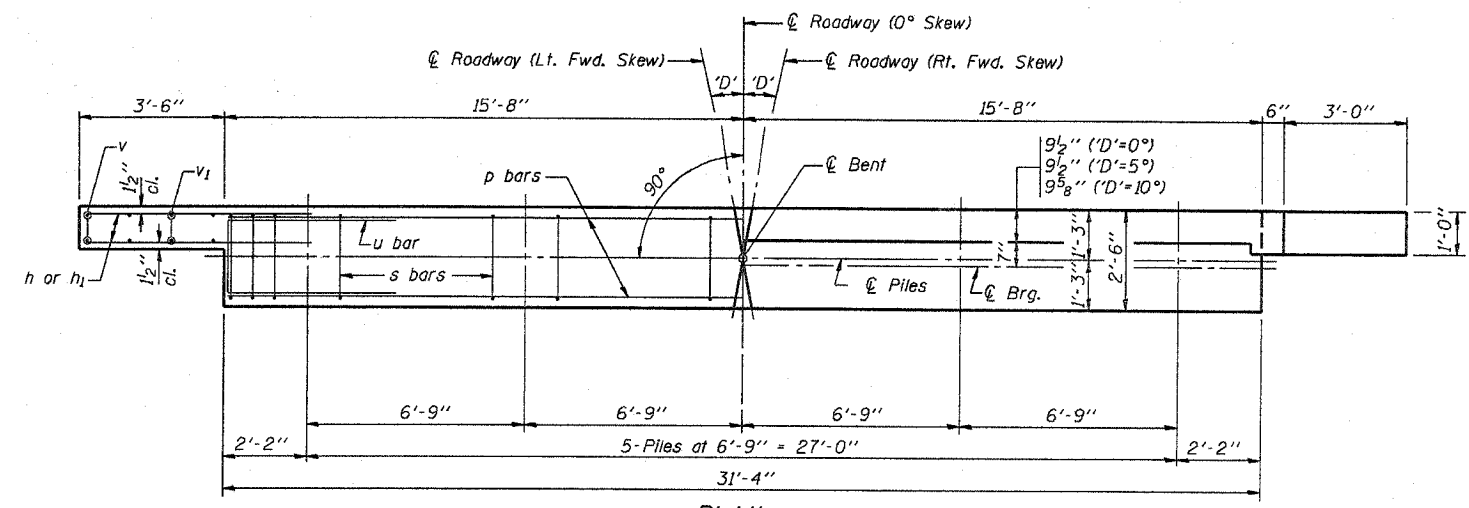
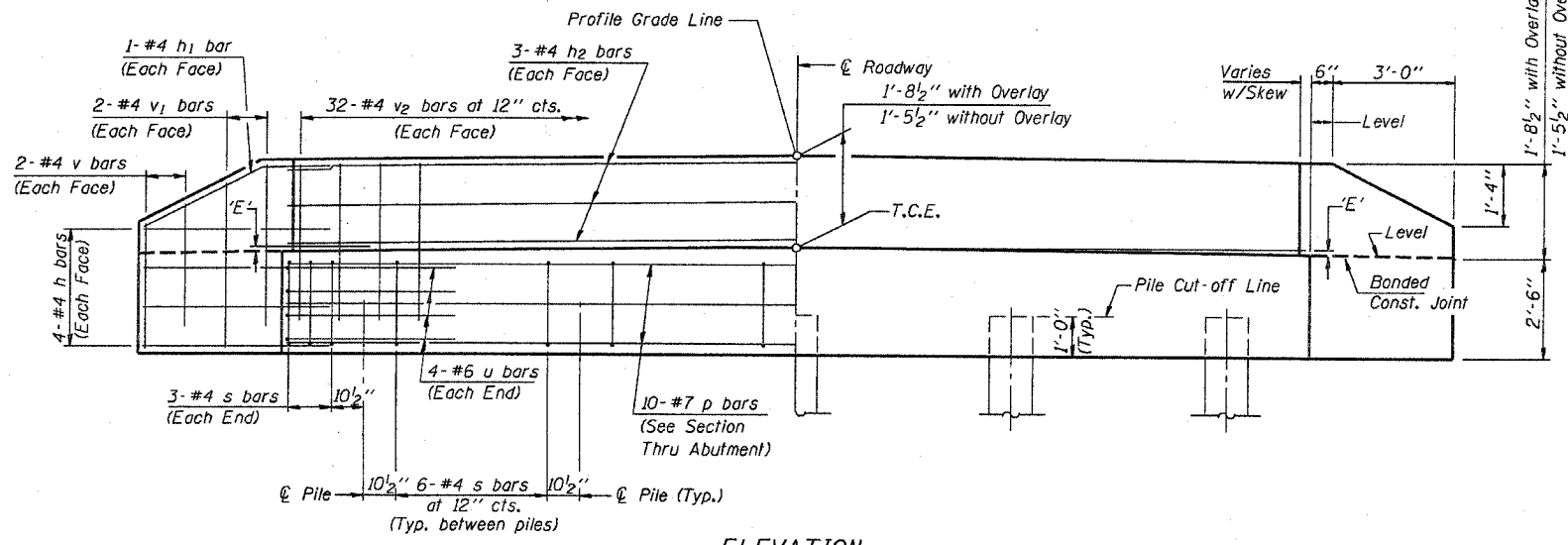


SECTION NO.	COUNTY HIGHWAY	COUNTY	SHEET OF SHEETS
00-00261-02-BR	83	ST. CLAIR	8 OF 14
FHWA REG. NO.	ILLINOIS	PROJ. BROS-163(30)	
FEDERAL AID PROJECT	CONTRACT # 97346		
ABUTMENT DETAILS			



**PLAN**  
(\*D'=Designated Skew Angle)



**ELEVATION**

**DIMENSION 'E'**

GRADE	'D'=0°		'D'=5°		'D'=10°	
	UPGRADE END	DOWNGRADE END	UPGRADE END	DOWNGRADE END	UPGRADE END	DOWNGRADE END
0%	2 7/8"	2 7/8"	2 7/8"	2 7/8"	2 7/8"	2 7/8"
Over 0% to 1%	2 7/8"	2 7/8"	2 7/8"	3"	2 3/4"	3"
Over 1% to 2%	2 7/8"	2 7/8"	2 5/8"	3 1/8"	2 3/8"	3 3/8"
Over 2% to 3%	2 7/8"	2 7/8"	2 1/2"	3 3/8"	2 1/8"	3 3/4"
Over 3% to 4%	2 7/8"	2 7/8"	2 3/8"	3 1/2"	1 3/4"	4"

**NOTES**

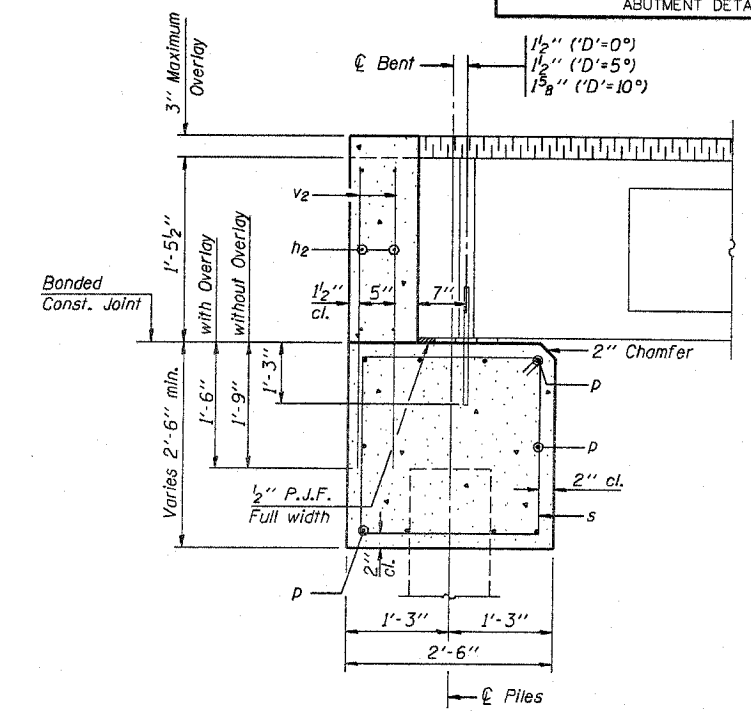
- The Backwall and the portion of the Wingwalls above the bonded construction joint shall be cast against the in-place beam.
- Reinforcement bars shall conform to the requirements of A.A.S.H.T.O. M-31 or M-322, Grade 60.
- Space reinforcement in cap to miss anchor bolts.

**MAXIMUM PILE LOADS**

SPAN	TONS
25'	25
30'	25
35'	27
40'	29

**DESIGN STRESSES**

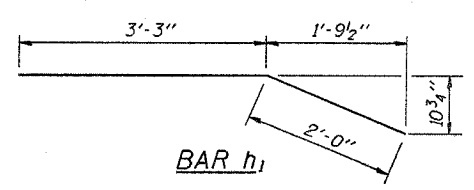
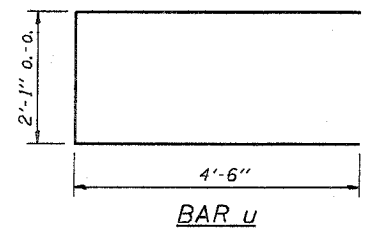
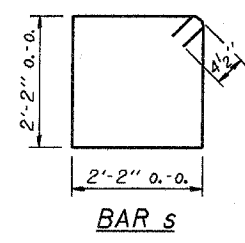
$f'_c = 3,500$  psi  
 $f_y = 60,000$  psi



**SECTION THRU ABUTMENT**  
(At Right Angles)

**BILL OF MATERIAL FOR ONE ABUTMENT**

Bar	No.	Size	Length	Shape
h	16	#4	5'-0"	—
h1	4	#4	5'-3"	—
h2	6	#4	31'-0"	—
p	10	#7	31'-0"	—
s	30	#4	9'-5"	□
u	8	#6	11'-1"	□
v	8	#4	2'-6"	—
v1	8	#4	3'-5"	—
v2	64	#4	3'-1"	—
Concrete Structures				10.1 Cu. Yds.
Reinforcement Bars				1310 Lb.



Illinois Department of Transportation

PASSED APRIL 4, 2005  
Theresa J. [Signature]  
Engineer of Bridge Design

APPROVED APRIL 4, 2005  
Ralph E. [Signature]  
Engineer of Bridges and Structures

ISSUED 4-4-2005

P.P.C. DECK BEAMS  
PILE BENT ABUTMENT

30' RDWY. 17" BMS. 'D'=0°, 5° OR 10°

STANDARD CA-3017-10