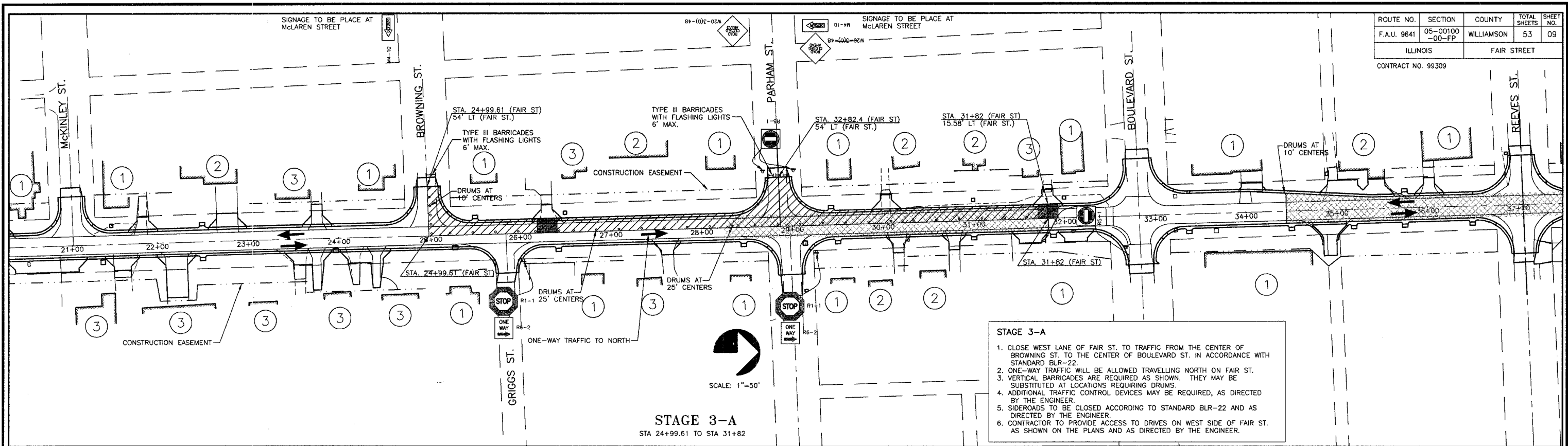


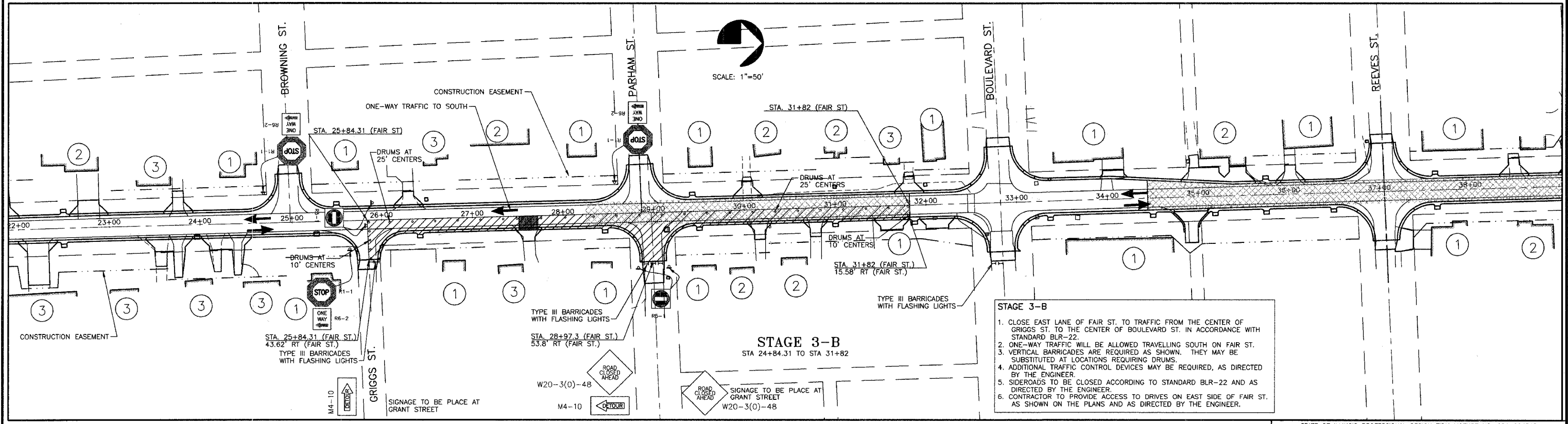
ROUTE NO.	SECTION	COUNTY	TOTAL SHEETS	SHEET NO.
F.A.U. 9641	05-00100-00-FP	WILLIAMSON	53	09
ILLINOIS		FAIR STREET		

CONTRACT NO. 99309



**STAGE 3-A**  
STA 24+99.61 TO STA 31+82

- STAGE 3-A**
1. CLOSE WEST LANE OF FAIR ST. TO TRAFFIC FROM THE CENTER OF BROWNING ST. TO THE CENTER OF BOULEVARD ST. IN ACCORDANCE WITH STANDARD BLR-22.
  2. ONE-WAY TRAFFIC WILL BE ALLOWED TRAVELLING NORTH ON FAIR ST.
  3. VERTICAL BARRICADES ARE REQUIRED AS SHOWN. THEY MAY BE SUBSTITUTED AT LOCATIONS REQUIRING DRUMS.
  4. ADDITIONAL TRAFFIC CONTROL DEVICES MAY BE REQUIRED, AS DIRECTED BY THE ENGINEER.
  5. SIDEROADS TO BE CLOSED ACCORDING TO STANDARD BLR-22 AND AS DIRECTED BY THE ENGINEER.
  6. CONTRACTOR TO PROVIDE ACCESS TO DRIVES ON WEST SIDE OF FAIR ST. AS SHOWN ON THE PLANS AND AS DIRECTED BY THE ENGINEER.



**STAGE 3-B**  
STA 24+84.31 TO STA 31+82

- STAGE 3-B**
1. CLOSE EAST LANE OF FAIR ST. TO TRAFFIC FROM THE CENTER OF GRIGOS ST. TO THE CENTER OF BOULEVARD ST. IN ACCORDANCE WITH STANDARD BLR-22.
  2. ONE-WAY TRAFFIC WILL BE ALLOWED TRAVELLING SOUTH ON FAIR ST.
  3. VERTICAL BARRICADES ARE REQUIRED AS SHOWN. THEY MAY BE SUBSTITUTED AT LOCATIONS REQUIRING DRUMS.
  4. ADDITIONAL TRAFFIC CONTROL DEVICES MAY BE REQUIRED, AS DIRECTED BY THE ENGINEER.
  5. SIDEROADS TO BE CLOSED ACCORDING TO STANDARD BLR-22 AND AS DIRECTED BY THE ENGINEER.
  6. CONTRACTOR TO PROVIDE ACCESS TO DRIVES ON EAST SIDE OF FAIR ST. AS SHOWN ON THE PLANS AND AS DIRECTED BY THE ENGINEER.

**LEGEND**

①	HAS ACCESS FROM SIDE STREET DURING CONSTRUCTION.
②	HAS ACCESS FROM REAR ALLEY DURING CONSTRUCTION.
③	HAS ACCESS FROM STREET ONLY.
	STAGING AREA
	TEMPORARY GRAVEL ACCESS
	AREA FOR WIDENING ONLY

STATE OF ILLINOIS PROFESSIONAL DESIGN FIRM LICENSE NO. 184-004515

© 2008 ALL RIGHTS RESERVED

**CLARIDA & ZIEGLER ENGINEERING CO.**  
308 South Court St., P.O. Box 937  
Marion, Illinois 62959  
Phone - (618)993-6411, Fax - (618)993-6750

**STAGING PLAN  
FAIR STREET WIDENING  
MARION, ILLINOIS**

REVISIONS	DATE	NO.

Date 2/26/08 DR. By P.L.D. CK'D By H.C.G.  
Scale 1"=50' Job No. 05142 Sheet No. 9 of 53

P:\05142\PLANS\07-10 STAGING.dwg, 4/10/2008 10:22:05 AM, 1:1