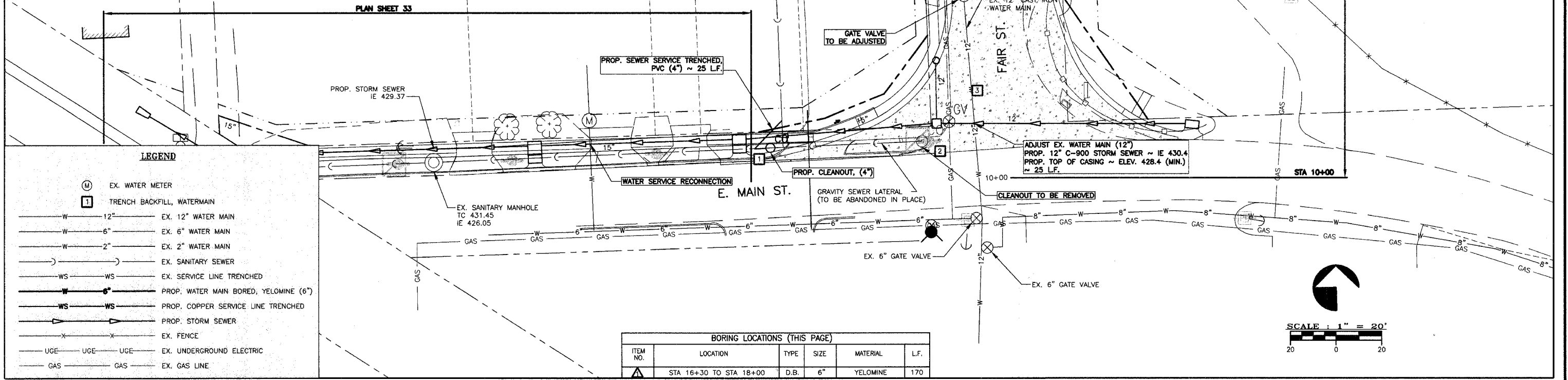
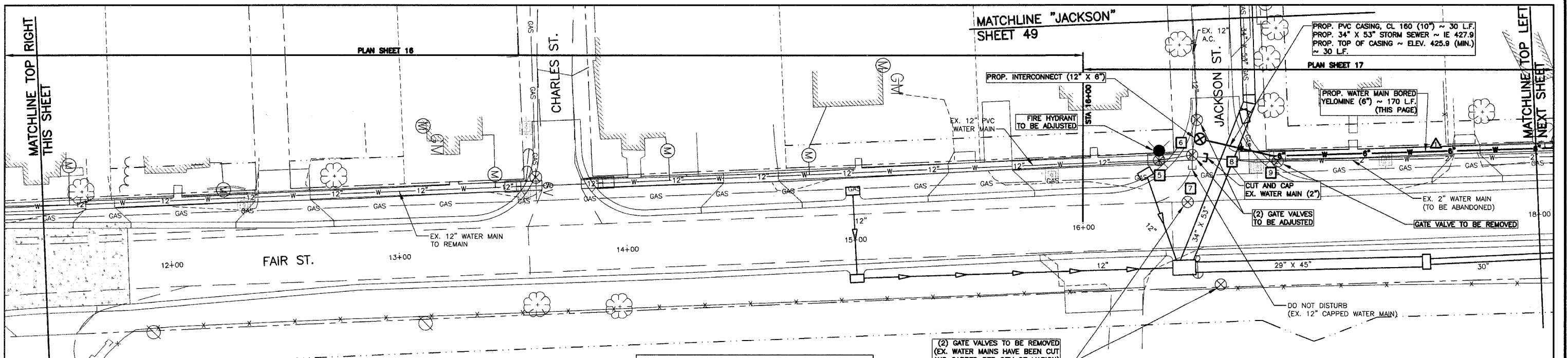


CONTRACT NO. 99309

TRENCH BACKFILL, WATERMAIN					
ITEM NO.	ITEM	TONS	ITEM NO.	ITEM	TONS
1	C.O.	2	7	G.V.	2
2	C.O.	2	8	OPEN CUT	25
3	ADJUST. W/M	25	9	G.V.	2
4	G.V.	2			
5	G.V.	2			
6	G.V. / INT.	8			



BORING LOCATIONS (THIS PAGE)					
ITEM NO.	LOCATION	TYPE	SIZE	MATERIAL	L.F.
1	STA. 16+30 TO STA. 18+00	D.B.	6"	YELOMINE	170



SUMMARY OF QUANTITIES (PLAN SHEET 16)	
1 EA.	WATER SERVICE RECONNECTION

SUMMARY OF QUANTITIES (PLAN SHEET 16)	
1 EA.	CLEANOUT TO BE REMOVED
1 EA.	CLEANOUT, (4")
25 L.F.	SEWER SERVICE TRENCHED, PVC (4")
1 EA.	ADJUST EX. WATER MAIN (12")
1 EA.	GATE VALVE TO BE ADJUSTED
31 TON	TRENCH BACKFILL, WATERMAIN

SUMMARY OF QUANTITIES (PLAN SHEET 17)	
170 L.F.	WATER MAIN BORED, YELOMINE (6")
170 L.F.	LOCATOR WIRE
2 EA.	GATE VALVES TO BE ADJUSTED
1 EA.	INTERCONNECT (12" X 6")
1 EA.	FIRE HY. TO BE ADJUSTED
1 EA.	CUT AND CAP EX. WATER MAIN, (2")
30 L.F.	PVC CASING, CL 160 (10")
3 EA.	GATE VALVES TO BE REMOVED
39 TON	TRENCH BACKFILL, WATERMAIN

STATE OF ILLINOIS PROFESSIONAL DESIGN FIRM LICENSE NO. 184-004515

© 2008 ALL RIGHTS RESERVED

CLARIDA & ZIEGLER ENGINEERING CO.
 308 South Court St, P.O. Box 937
 Marion, Illinois 62959
 Phone - (618)993-6411, Fax - (618)993-6750

UTILITY PLANS
 FAIR STREET WIDENING
 MARION, ILLINOIS

Date: 2/26/08 DR. By: RF CK'D By: HGC
 Scale: 1"=20' Job No. 05142 Sheet No. 46 of 53