

POINT #11

SET CC IN WALK
N 1880301.4260
E 1120906.9250

POINT #3

REBAR
N 1880376.2310
E 1122317.3800

POINT #4

CC IN WALK
N 1880362.8090
E 1121700.4530

POINT #7046

POT 27+50.00
RIDGEWOOD
N 1880361.7924
E 1122493.1126

POINT #7044

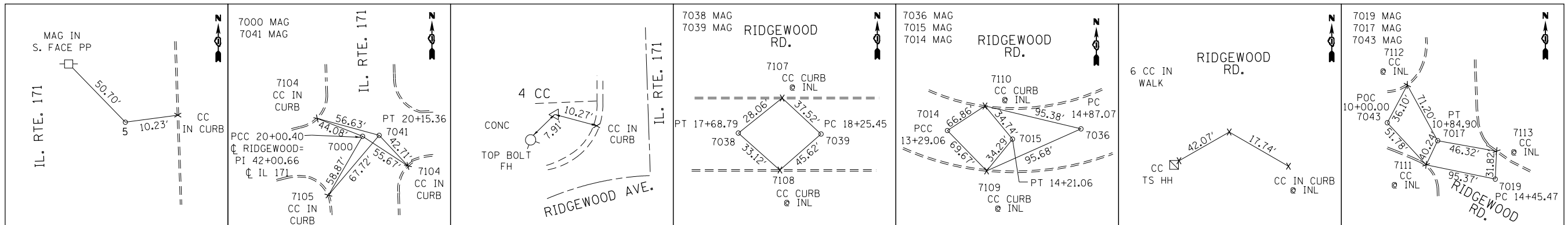
SET MAG IN
CL POT 30+00 CL IL 171
N 1879130.6816
E 1121784.8522

POINT #10

SET CC IN WALK
N 1879293.5000
E 1121751.3090

POINT #7045

SET MAG IN
CL POT 53+00 CL IL 171
N 1881429.3757
E 1121707.3266



POINT #5

REBAR
N 1880872.7600
E 1121686.7370

POINT #7000

SET MAG IN
POC 20+00.40 CL RIDGEWOOD=
PI 42+00.66 CL IL 171
N 1880330.6563
E 1121744.1614

POINT #7041

SET MAG IN
PT 20+15.36 CL FOREST/
RIDGEWOOD=
N 1880331.4863
E 1121759.1028

CONTROL POINT #4

CC IN WALK
N 1880362.8090
E 1121700.4530

POINT #7038

SET MAG IN
PT 17+68.785
RIDGEWOOD
N 1880267.7293
E 1121522.7131

POINT #7039

SET MAG IN
PC 18+25.454
RIDGEWOOD
N 1880289.9252
E 1121574.8546

POINT #7014

SET MAG IN
PCC 13+29.06 CL RIDGEWOOD
N 1880190.8708
E 1121093.0188

POINT #7015

SET MAG IN
PT 14+21.06 CL RIDGEWOOD
N 1880193.0314
E 1121184.9243

POINT #7036

SET MAG IN
PC 14+87.07 CL RIDGEWOOD
N 1880199.0863
E 1121250.6569

POINT #6

SET CC IN WALK
N 1880245.7420
E 1121343.5570

POINT #7019

SET MAG IN
PC 11+45.47 CL RIDGEWOOD
N 1880242.7140
E 1121093.0188

POINT #7017

SET MAG IN
PT 10+84.90 CL RIDGEWOOD
N 1880273.5204
E 1120866.6570

POINT #7043

SET MAG IN
POC 10+00 CL RIDGEWOOD
N 1880301.0863
E 1120786.9535

FILE NAME =	USER NAME = Tariqfm	DESIGNED -	REVISED -	STATE OF ILLINOIS DEPARTMENT OF TRANSPORTATION	IL. ROUTE 171 AT FOREST AVE./RIDGEWOOD RD. TIES			F.A.P. RTE.	SECTION	COUNTY	TOTAL SHEETS	SHEET NO.
Default	2-sht-ATB.dgn	DRAWN - D.B.	REVISED -					372	03035-TS	COOK	87	23
	PLOT SCALE = 200.0000' / in.	CHECKED -	REVISED -					CONTRACT NO. 60X08				
	PLOT DATE = 4/2/2014	DATE -	REVISED -					ILLINOIS FED. AID PROJECT				