

LEGEND

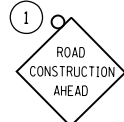
▨ WORK AREA

⇨ DIRECTION OF TRAFFIC

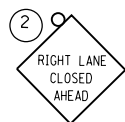
↑ SIGN

↑ ARROW BOARD

○ TYPE II BARRICADE, DRUM, OR VERTICAL BARRICADE WITH STEADY BURN MONODIRECTIONAL LIGHT, 50' CENTERS (20' CENTERS IN TAPER)



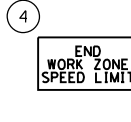
W20-1103(O)-48



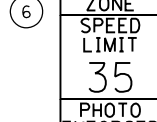
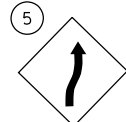
W20-5(O)-48



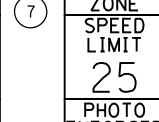
W21-1(O)-48



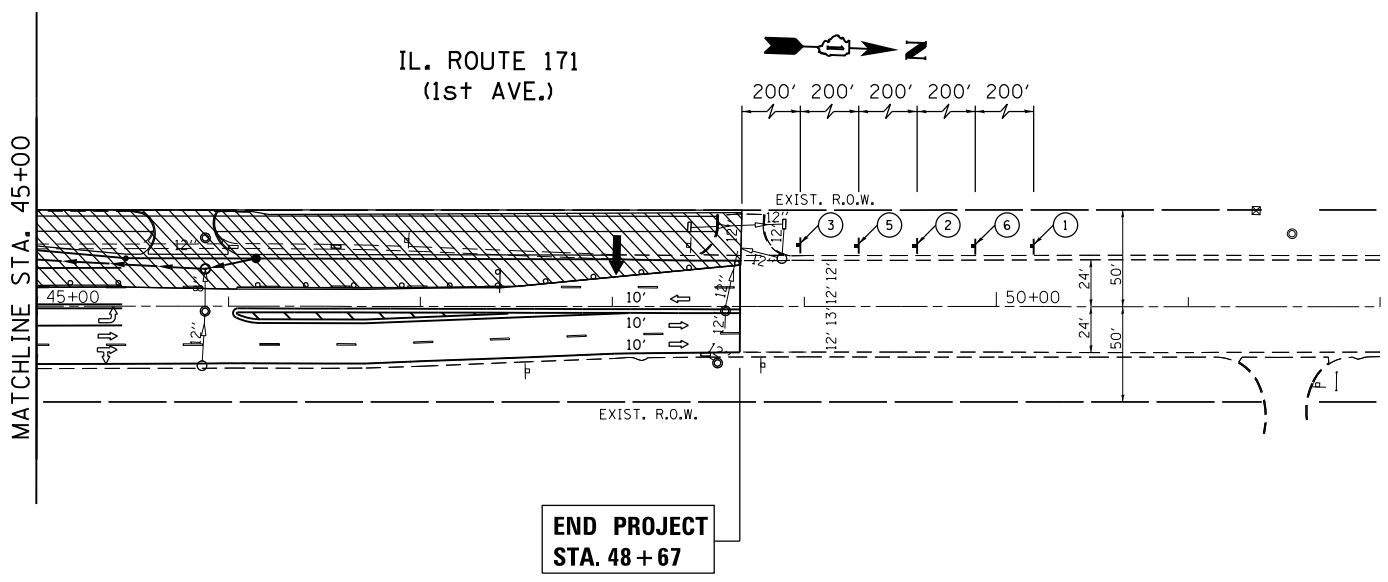
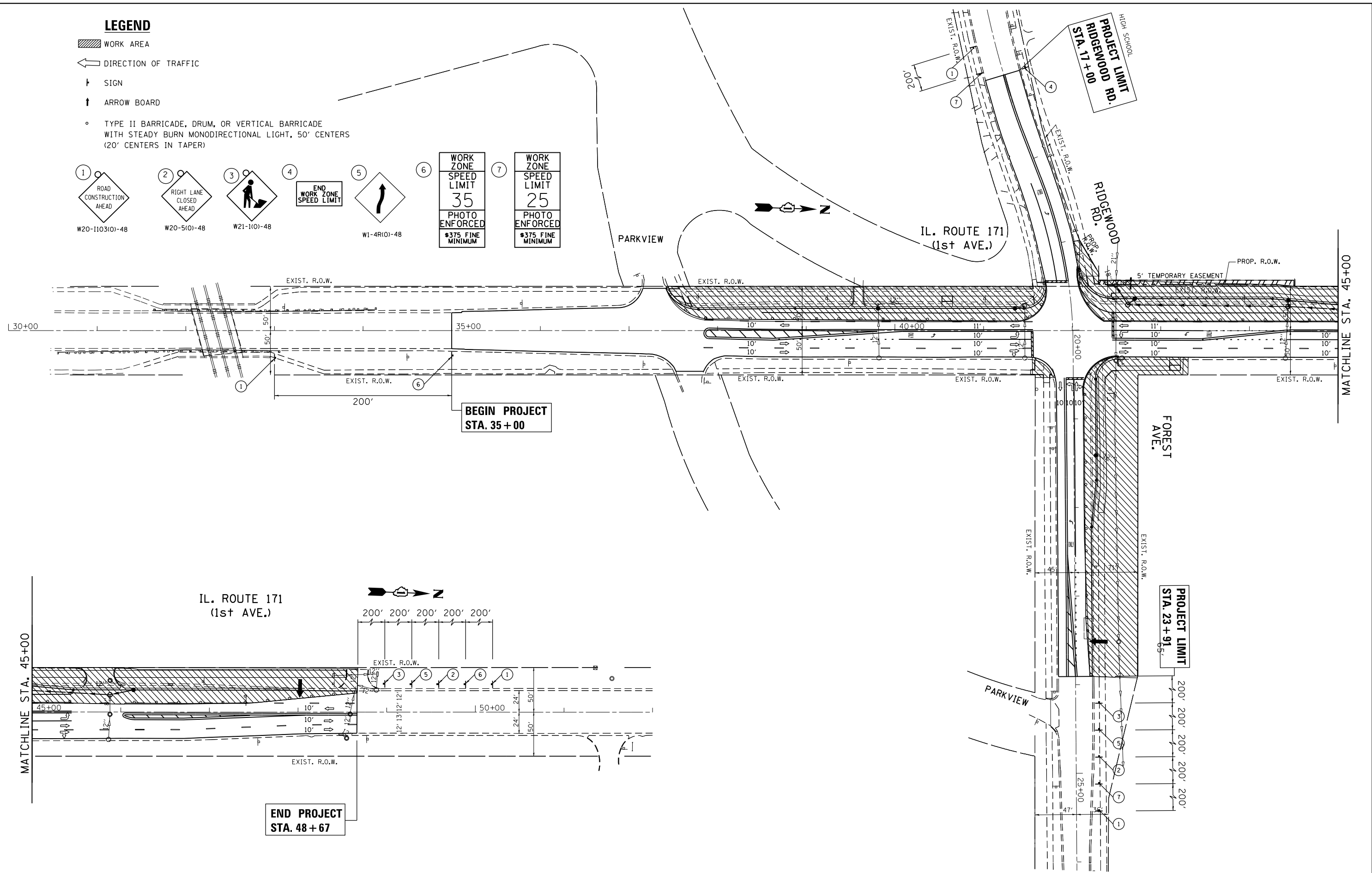
W1-4R(O)-48



W20-1103(O)-48



W20-1103(O)-48



FILE NAME =	USER NAME = Tariqfm	DESIGNED -	REVISED -
ct:\pw\work\p1dot\tariqfm\d0315748\p1144	2-sht-Stage2.dgn	DRAWN -	REVISED -
Default	PLOT SCALE = 100.0000' / in.	CHECKED -	REVISED -
	PLOT DATE = 3/31/2014	DATE -	REVISED -

**STATE OF ILLINOIS
DEPARTMENT OF TRANSPORTATION**

**IL. ROUTE 171 AT FOREST AVE./RIDGEWOOD RD.
SUGGESTED STAGES 1A, 1B, AND 1C - OFF-PEAK HOURS**

F.A.P. RTE.	SECTION	COUNTY	TOTAL SHEETS	SHEET NO.
372	03035-TS	COOK	87	31
CONTRACT NO. 60X08				
ILLINOIS FED. AID PROJECT				

SCALE: 1"=50' SHEET OF SHEETS STA. TO STA.