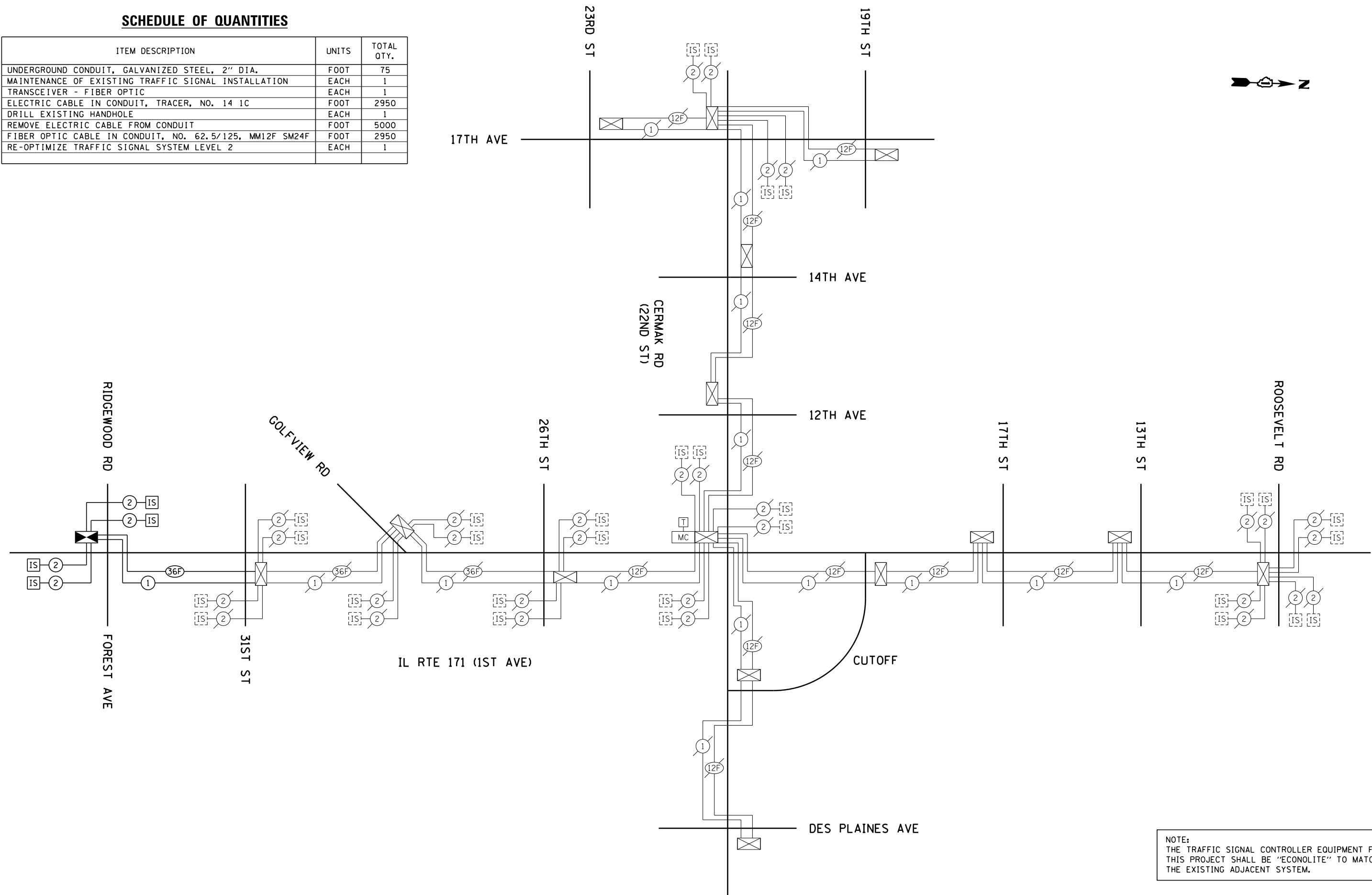


SCHEDULE OF QUANTITIES

ITEM DESCRIPTION	UNITS	TOTAL QTY.
UNDERGROUND CONDUIT, GALVANIZED STEEL, 2" DIA.	FOOT	75
MAINTENANCE OF EXISTING TRAFFIC SIGNAL INSTALLATION	EACH	1
TRANSCEIVER - FIBER OPTIC	EACH	1
ELECTRIC CABLE IN CONDUIT, TRACER, NO. 14 1C	FOOT	2950
DRILL EXISTING HANDHOLE	EACH	1
REMOVE ELECTRIC CABLE FROM CONDUIT	FOOT	5000
FIBER OPTIC CABLE IN CONDUIT, NO. 62.5/125, MM12F SM24F	FOOT	2950
RE-OPTIMIZE TRAFFIC SIGNAL SYSTEM LEVEL 2	EACH	1



NOTE:
THE TRAFFIC SIGNAL CONTROLLER EQUIPMENT FOR THIS PROJECT SHALL BE "ECONOLITE" TO MATCH THE EXISTING ADJACENT SYSTEM.

FILE NAME =	USER NAME = plascencia	DESIGNED - IP	REVISED -
et:\pw\work\p\plascencia\140370834\114412-TS.dgn		DRAWN - IP	REVISED -
Default	PLOT SCALE = 100.0000' / in.	CHECKED - LP	REVISED -
	PLOT DATE = 3/28/2014	DATE - 3/15/14	REVISED -

**STATE OF ILLINOIS
DEPARTMENT OF TRANSPORTATION**

**PROPOSED INTERCONNECT SCHEMATIC
IL RTE 171 (FOREST AVE / RIDGEWOOD RD TO ROOSEVELT RD)**

SCALE: NTS SHEET OF SHEETS STA. TO STA.

F.A.P. RTE.	SECTION	COUNTY	TOTAL SHEETS	SHEET NO.
372	03035-TS	COOK	87	58
ILLINOIS FED. AID PROJECT			CONTRACT NO. 60X08	

ECON 27