

F.A.L. RTE.	SECTION	COUNTY	TOTAL SHEETS	SHEET NO.
55	D3 PATCHING 2015-2	LIVINGSTON	15	1
ILLINOIS CONTRACT NO. 66D78				

STATE OF ILLINOIS
DEPARTMENT OF TRANSPORTATION
DIVISION OF HIGHWAYS

PROPOSED
HIGHWAY PLANS

FAI ROUTE 55 (I-55)
SECTION D3 PATCHING 2015-2

PAVEMENT PATCHING
LIVINGSTON COUNTY

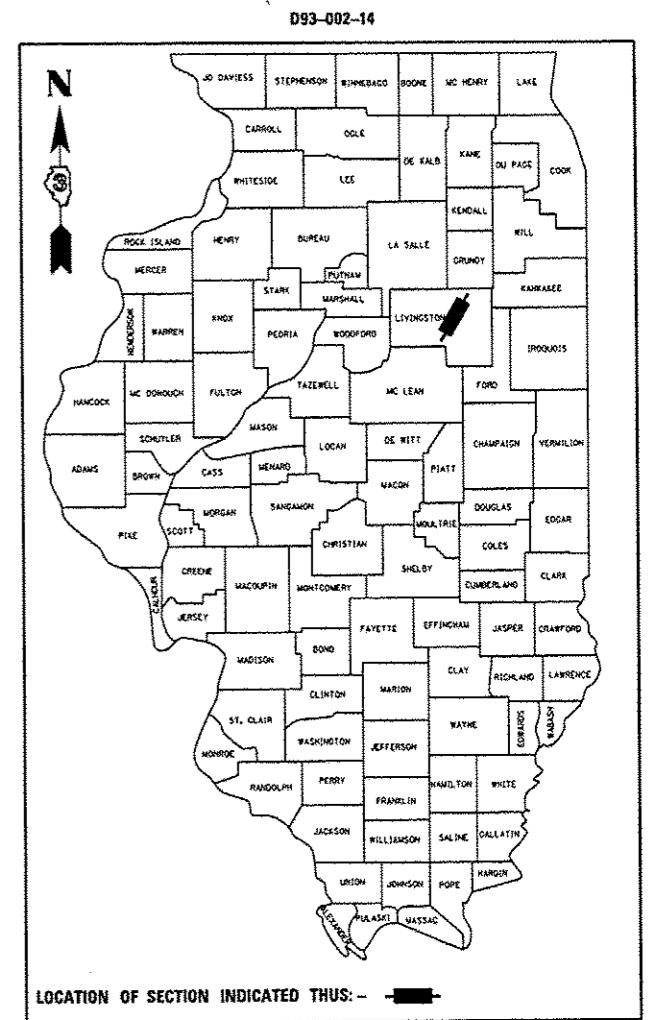
C-93-101-14

INDEX OF SHEETS

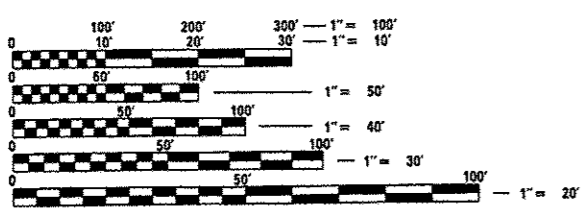
1. COVER SHEET
2. GENERAL NOTES
- 3 - 4. SUMMARY OF QUANTITIES
5. TYPICAL SECTIONS
- 6 - 11. SCHEDULES
12. TRAFFIC CONTROL AND PROTECTION, STANDARD 701400 (SPECIAL)
- 13 - 14. CLASS A PATCHES
15. TYPICAL PAVEMENT MARKINGS

HIGHWAY STANDARDS

- | | |
|-----------|---|
| 000001-06 | STANDARD SYMBOLS, ABBREVIATIONS AND PATTERNS |
| 001001-02 | AREAS OF REINFORCEMENT BARS |
| 001006 | DECIMAL OF AN INCH AND OF A FOOT |
| 420701-02 | PAVEMENT FABRIC |
| 421001-02 | BAR REINFORCEMENT FOR CRC PAVEMENT |
| 701101-04 | OFF-ROAD OPERATIONS MULTILANE, 15' (4.5 m) TO 24" (600 mm) FROM PAVEMENT EDGE |
| 701401-08 | LANE CLOSURE, FREEWAY/EXPRESSWAY |
| 701411-08 | LANE CLOSURE, MULTILANE, AT ENTRANCE OR EXIT RAMP FOR SPEEDS ≥ 45 MPH |
| 701426-06 | LANE CLOSURE, MULTILANE INTERMITTENT OR MOVING OPERATION, FOR SPEEDS ≥ 45 MPH |
| 701428 | TRAFFIC CONTROL SETUP AND REMOVAL FREEWAY/EXPRESSWAY |
| 701901-03 | TRAFFIC CONTROL DEVICES |



RURAL	
INTERSTATE	
FAI 55 (I-55)	
2013	
ADT	19100
P.V.	63.61%
S.U.	9.95%
M.U.	26.44%



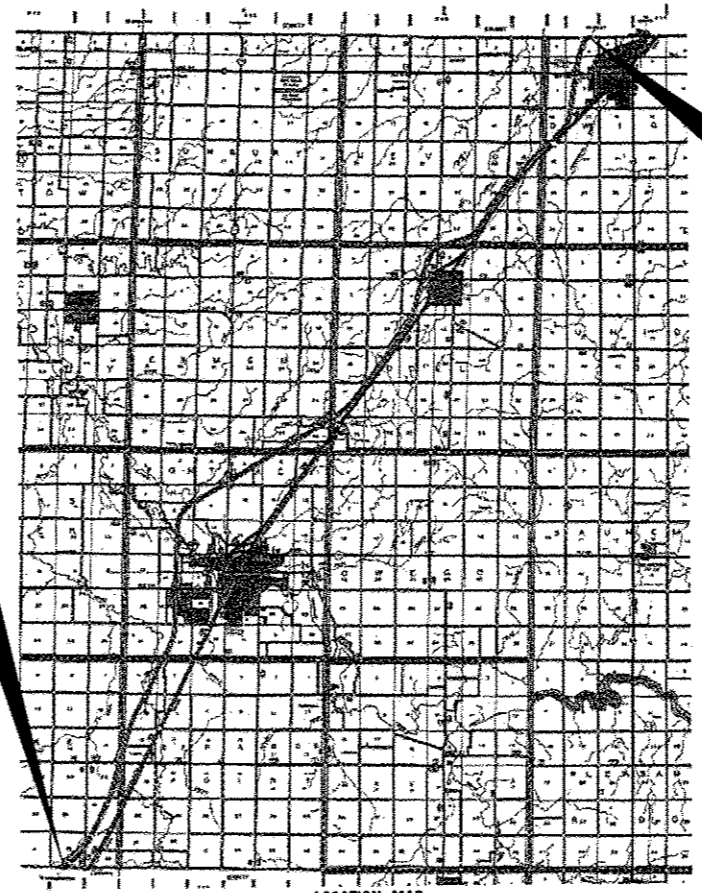
FULL SIZE PLANS HAVE BEEN PREPARED USING STANDARD ENGINEERING SCALES. REDUCED SIZED PLANS WILL NOT CONFORM TO STANDARD SCALES. IN MAKING MEASUREMENTS ON REDUCED PLANS, THE ABOVE SCALES MAY BE USED.

J.U.L.I.E.
 JOINT UTILITY LOCATION INFORMATION FOR EXCAVATION
 1-800-892-0123
 OR 811

PROJECT ENGINEER: JOSEPH KANNEL, P.E.
UNIT CHIEF: RON WOODSHANK
TOWNSHIP: VARIOUS

CONTRACT NO. 66D78

PROJECT BEGINS
MCLEAN COUNTY LINE
 (M.P. 187.70)



PROJECT ENDS
GRUNDY COUNTY LINE
 (M.P. 218.07)

LOCATION MAP
 NOT TO SCALE

GROSS LENGTH = 160353.60 FT. = 30.370 MILE
 NET LENGTH = 1283.00 FT. = 0.243 MILE

STATE OF ILLINOIS
 DEPARTMENT OF TRANSPORTATION
 DIVISION OF HIGHWAYS

SUBMITTED April 3 20 14
Paul Lacta, P.E.
 DEPUTY DIRECTOR OF HIGHWAYS, REGION ENGINEER

May 9 20 14
John D. Baranzelli, P.E.
 ENGINEER OF DESIGN AND ENVIRONMENT

May 9 20 14
Orin G. Moran, P.E.
 DIRECTOR OF HIGHWAYS, CHIEF ENGINEER

PRINTED BY THE AUTHORITY
OF THE STATE OF ILLINOIS