

**INDEX OF SHEETS**

1. COVER SHEET
2. GENERAL NOTES
- 3 - 4. SUMMARY OF QUANTITIES
5. TYPICAL SECTIONS
- 6 - 11. SCHEDULES
12. TRAFFIC CONTROL AND PROTECTION, STANDARD 701400 (SPECIAL)
- 13 - 14. CLASS A PATCHES
15. TYPICAL PAVEMENT MARKINGS

**HIGHWAY STANDARDS**

- 000001-06 STANDARD SYMBOLS, ABBREVIATIONS AND PATTERNS
- 001001-02 AREAS OF REINFORCEMENT BARS
- 001006 DECIMAL OF AN INCH AND OF A FOOT
- 420701-02 PAVEMENT FABRIC
- 421001-02 BAR REINFORCEMENT FOR CRC PAVEMENT
- 701101-04 OFF-ROAD OPERATIONS MULTILANE, 15' (4.5 m) TO 24" (600 mm) FROM PAVEMENT EDGE
- 701401-08 LANE CLOSURE, FREEWAY/EXPRESSWAY
- 701411-08 LANE CLOSURE, MULTILANE, AT ENTRANCE OR EXIT RAMP FOR SPEEDS ≥ 45 MPH
- 701426-06 LANE CLOSURE, MULTILANE INTERMITTENT OR MOVING OPERATION, FOR SPEEDS ≥ 45 MPH
- 701428 TRAFFIC CONTROL SETUP AND REMOVAL FREEWAY/EXPRESSWAY
- 701901-03 TRAFFIC CONTROL DEVICES

**STATE OF ILLINOIS**  
**DEPARTMENT OF TRANSPORTATION**  
**DIVISION OF HIGHWAYS**

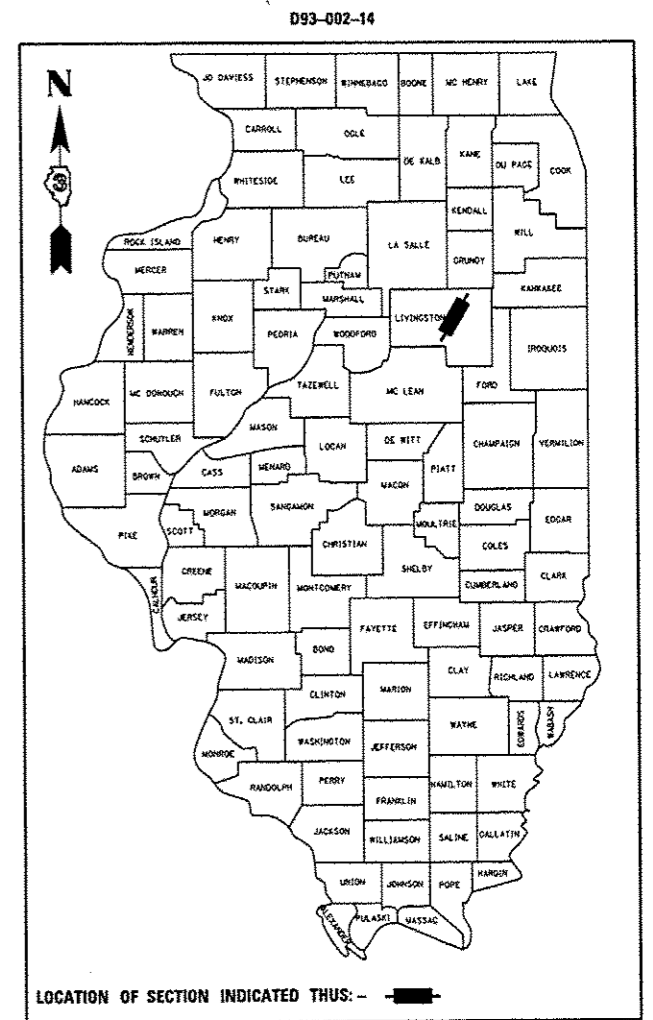
**PROPOSED**  
**HIGHWAY PLANS**

**FAI ROUTE 55 (I-55)**  
**SECTION D3 PATCHING 2015-2**

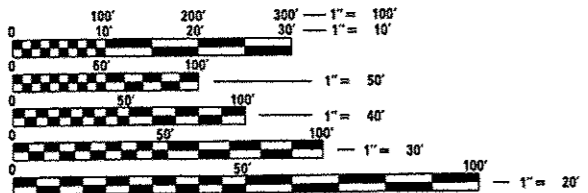
**PAVEMENT PATCHING**  
**LIVINGSTON COUNTY**

C-93-101-14

F.A.L. RTE.	SECTION	COUNTY	TOTAL SHEETS	SHEET NO.
55	D3 PATCHING 2015-2	LIVINGSTON	15	1
ILLINOIS CONTRACT NO. 66D78				



RURAL	
INTERSTATE	
FAI 55 (I-55)	
2013	
ADT	19100
P.V.	63.61%
S.U.	9.95%
M.U.	26.44%

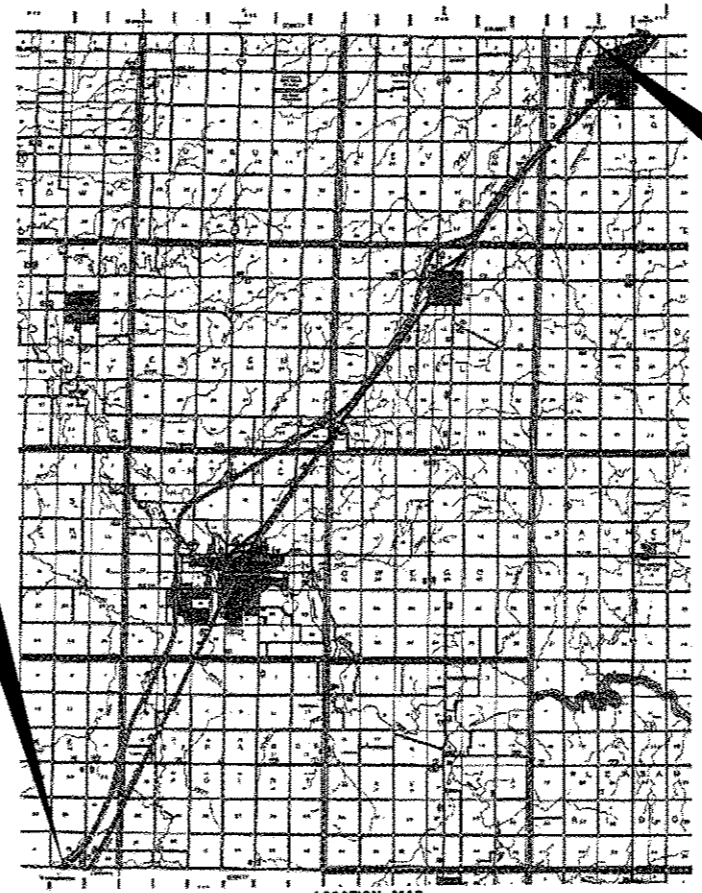


FULL SIZE PLANS HAVE BEEN PREPARED USING STANDARD ENGINEERING SCALES. REDUCED SIZED PLANS WILL NOT CONFORM TO STANDARD SCALES. IN MAKING MEASUREMENTS ON REDUCED PLANS, THE ABOVE SCALES MAY BE USED.

J.U.L.I.E.  
 JOINT UTILITY LOCATION INFORMATION FOR EXCAVATION  
 1-800-892-0123  
 OR 811

**PROJECT ENGINEER: JOSEPH KANNEL, P.E.**  
**UNIT CHIEF: RON WOODSHANK**  
**TOWNSHIP: VARIOUS**

**CONTRACT NO. 66D78**



**PROJECT BEGINS**  
**MCLEAN COUNTY LINE**  
 (M.P. 187.70)

**PROJECT ENDS**  
**GRUNDY COUNTY LINE**  
 (M.P. 218.07)

GROSS LENGTH = 160353.60 FT. = 30.370 MILE  
 NET LENGTH = 1283.00 FT. = 0.243 MILE

STATE OF ILLINOIS  
 DEPARTMENT OF TRANSPORTATION  
 DIVISION OF HIGHWAYS

SUBMITTED April 3 20 14  
*Paul Lacta, P.E.*  
 DEPUTY DIRECTOR OF HIGHWAYS, REGION ENGINEER

May 9 20 14  
*John D. Baranzelli, P.E.*  
 ENGINEER OF DESIGN AND ENVIRONMENT

May 9 20 14  
*Orlando S. Maner, P.E.*  
 DIRECTOR OF HIGHWAYS, CHIEF ENGINEER

**PRINTED BY THE AUTHORITY**  
**OF THE STATE OF ILLINOIS**

GENERAL NOTES

PLAN DIMENSIONS AND DETAILS RELATIVE TO EXISTING PLANS ARE SUBJECT TO NOMINAL CONSTRUCTION VARIATIONS. THE CONTRACTOR SHALL FIELD VERIFY EXISTING DIMENSIONS AND DETAILS AFFECTING NEW CONSTRUCTION AND MAKE NECESSARY APPROVED ADJUSTMENTS PRIOR TO CONSTRUCTION OR ORDERING OF MATERIALS. SUCH VARIATIONS SHALL NOT BE CAUSE FOR ADDITIONAL COMPENSATION FOR A CHANGE IN SCOPE OF WORK; HOWEVER, THE CONTRACTOR WILL BE PAID FOR THE QUANTITY ACTUALLY FURNISHED AT THE UNIT PRICE BID FOR THE WORK.

FOR STABILIZATION, ALL TYPE III BARRICADES WILL REQUIRE A MINIMUM OF FOUR SAND BAGS PER BARRICADE.

ANY REFERENCE TO A STANDARD IN THESE PLANS SHALL BE INTERPRETED TO MEAN THE EDITION AS INDICATED BY THE SUBNUMBER SHOWN IN THE LIST OF STANDARDS OR THE COPY INCLUDED IN THESE PLANS.

ALL EXCAVATED MATERIAL, WHICH INCLUDES DIGGING OR GRADING OF ANY SOIL OR FILL MATERIAL, WITH THE EXCEPTION OF AGGREGATE FILLS, MUST BE INCORPORATED WITHIN THE IDOT RIGHT OF WAY DUE TO ENVIRONMENTAL DOCUMENTATION REQUIREMENTS.

THE CONTRACTOR SHALL CONTACT JULIE AT LEAST 48 HOURS PRIOR TO EXCAVATION TO DETERMINE WHICH UTILITIES ARE IN THE AREA.

COMMITMENTS

DATE: 4-3-14  
 PREPARED BY: *Paul Beonil*  
 DISTRICT STUDIES & PLANS ENGINEER  
 EXAMINED BY: *Herbert J. [Signature]*  
 DISTRICT CONSTRUCTION ENGINEER  
*[Signature]*  
 DISTRICT MATERIALS ENGINEER  
*Bruce A. Wheeler*  
 DISTRICT OPERATIONS ENGINEER

FILE NAME :	USER NAME = santacruzje	DESIGNED -	REVISED -
c:\pwork\pvidat\santacruzje\0308031\366078-ehd-details.dgn		DRAWN -	REVISED -
	PLOT SCALE * 500000.5616 1 / in.	CHECKED -	REVISED -
#MODELNAME#	PLOT DATE * 3/31/2014	DATE -	REVISED -

STATE OF ILLINOIS  
 DEPARTMENT OF TRANSPORTATION

**GENERAL NOTES**

SCALE: \_\_\_\_\_ SHEET 1 OF 1 SHEETS STA. \_\_\_\_\_ TO STA. \_\_\_\_\_

F.A.L. RTE.	SECTION	COUNTY	TOTAL SHEETS	SHEET NO.
55	D3 PATCHING 2015-2	LIVINGSTON	15	2
CONTRACT NO. 66078			ILLINOIS FED. AID PROJECT	

CODE NO.	ITEM	UNIT	TOTAL QUANTITY	CONSTR. CODE
				STATE 100% ROADWAY 0005 RURAL
44200541	CLASS A PATCHES, TYPE II, 9 INCH	SQ YD	248	248
44200545	CLASS A PATCHES, TYPE III, 9 INCH	SQ YD	80	80
44200547	CLASS A PATCHES, TYPE IV, 9 INCH	SQ YD	27	27
44200620	CLASS A PATCHES, TYPE II, 14 INCH	SQ YD	547	547
44200624	CLASS A PATCHES, TYPE III, 14 INCH	SQ YD	260	260
44200628	CLASS A PATCHES, TYPE IV, 14 INCH	SQ YD	227	227
44213000	PATCHING REINFORCEMENT	SQ YD	1389	1389
44213100	PAVEMENT FABRIC	SQ YD	1034	1034
44213200	SAW CUTS	FOOT	7698	7698
44213204	TIE BARS 3/4"	EACH	154	154
67100100	MOBILIZATION	L SUM	1	1
70100420	TRAFFIC CONTROL AND PROTECTION, STANDARD 701411	EACH	16	16
70103815	TRAFFIC CONTROL SURVEILLANCE	CAL DA	20	20
* 14 78009004	MODIFIED URETHANE PAVEMENT MARKING - LINE 4"	FOOT	1041	1041

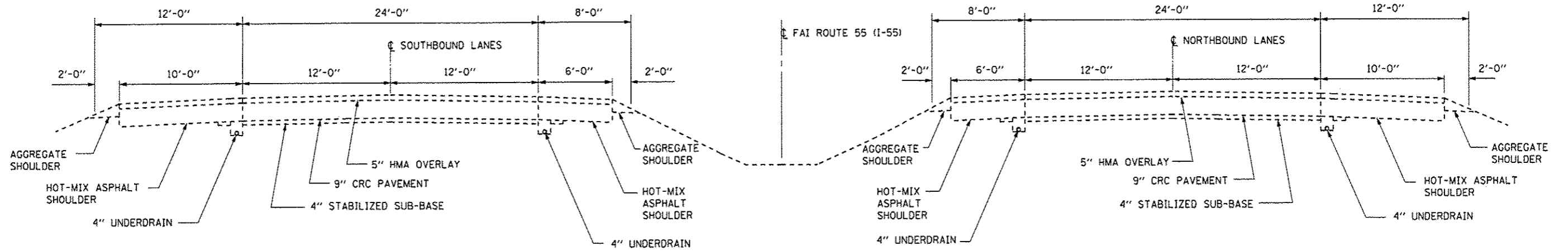
\*Specialty Items

CODE NO.	ITEM	UNIT	TOTAL QUANTITY	CONSTR. CODE	
				STATE 100% ROADWAY 0005 RURAL	
* 78009006	MODIFIED URETHANE PAVEMENT MARKING - LINE 6"	FOOT	1110	1110	
X7010410	SPEED DISPLAY TRAILER	CAL MO	1.5	1.5	
X7010805	TRAFFIC CONTROL AND PROTECTION, STANDARD 701401 (SPECIAL)	L SUM	1	1	
Z0030850	TEMPORARY INFORMATION SIGNING	SQ FT	42	42	

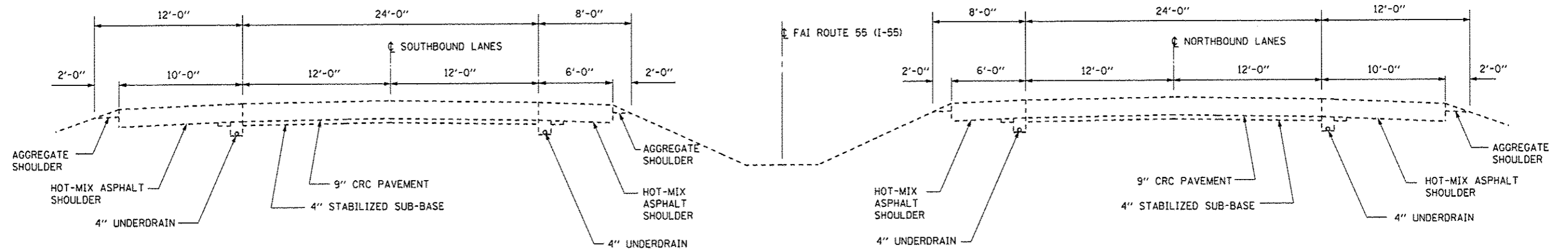
\*

u

\* Specialty Items



**TYPICAL SECTION  
MAINLINE**  
M.M. 187.70 TO M.M. 215.40



**TYPICAL SECTION  
MAINLINE**  
M.M. 215.40 TO M.M. 218.07

FILE NAME *	USER NAME * santacruzjo	DESIGNED -	REVISED -	<b>STATE OF ILLINOIS DEPARTMENT OF TRANSPORTATION</b>	<b>TYPICAL SECTIONS</b>			F.A.I. RTE.	SECTION	COUNTY	TOTAL SHEETS	SHEET NO.
c:\pwwork\pwwork\santacruzjo\d366031\366078-phs-details.dgn	PLOT SCALE * 500000.0018 1/4 in.	DRAWN -	REVISED -		55	D3 PATCHING 2015-2	LIVINGSTON	15	5			
MODELNAME*	PLOT DATE * 3/31/2014	CHECKED -	REVISED -		SCALE: _____ SHEET 1 OF 1 SHEETS STA. _____ TO STA. _____			ILLINOIS FED. AID PROJECT CONTRACT NO. 66078				
		DATE -	REVISED -									

**SCHEDULE - NBL CLASS A PATCHING 14"**

LOCATION BY MILE MARKER	PASSING LANE							DRIVING LANE							
	CLASS A PATCHING			PATCH REINF.	PAV'T FABRIC	SAW CUTS	TIE BARS	CLASS A PATCHING			PATCH REINF.	PAV'T FABRIC	SAW CUTS	TIE BARS	
	TYPE II	TYPE III	TYPE IV					TYPE II	TYPE III	TYPE IV					
SQ YD	SQ YD	SQ YD	SQ YD	SQ YD	FOOT	EACH	SQ YD	SQ YD	SQ YD	SQ YD	SQ YD	FOOT	EACH		
187.80								8				8	8	60	
190.70								11				11	11	64	
191.80								8				8	8	60	
193.40								8				8	8	60	
196.50	8				8	8	60								
196.51	8				8	8	60								
196.71								8				8	8	60	
197.23				27	27	27	88	18							
197.24										33		33	33	98	23
197.30								8				8	8	60	
198.80	13				13	13	68								
199.20								8				8	8	60	
199.30								8				8	8	60	
199.90	8				8	8	60								
201.00								8				8	8	60	
201.50								8				8	8	60	
201.62								8				8	8	60	
201.70								8				8	8	60	
201.80								8				8	8	60	
201.90								8				8	8	60	
202.10								8				8	8	60	
202.20								8				8	8	60	
202.30								8				8	8	60	
202.32								8				8	8	60	
202.40								8				8	8	60	
202.50								8				8	8	60	
202.60								11				11	11	64	
202.70								8				8	8	60	
202.73										20		20	20	78	
202.80								8				8	8	60	
202.90								8				8	8	60	
203.00								8				8	8	60	
203.10										20		20	20	78	
PAGE 1 SUBTOTAL	37			27	64	64	336	18	205	40	33	279	279	1762	23

FILE NAME *	USER NAME * santacruzje	DESIGNED - _____	REVISED - _____
c:\pwork\pvidot\santacruzje\d0388031\366078-ht-detaile.dgn		DRAWN - _____	REVISED - _____
#MODELNAME*	PLOT SCALE * 500000.5918 ' / in.	CHECKED - _____	REVISED - _____
	PLOT DATE * 3/31/2014	DATE - _____	REVISED - _____

**STATE OF ILLINOIS  
DEPARTMENT OF TRANSPORTATION**

**SCHEDULES**

SCALE: \_\_\_\_\_ SHEET 1 OF 6 SHEETS STA. \_\_\_\_\_ TO STA. \_\_\_\_\_

F.A.T. RTE.	SECTION	COUNTY	TOTAL SHEETS	SHEET NO.
55	D3 PATCHING 2015-2	LIVINGSTON	15	6
ILLINOIS FED. AID PROJECT				

**SCHEDULE - NBL CLASS A PATCHING 14''**

LOCATION BY MILE MARKER	PASSING LANE							DRIVING LANE						
	CLASS A PATCHING			PATCH REINF.	PAV'T FABRIC	SAW CUTS FOOT	TIE BARS EACH	CLASS A PATCHING			PATCH REINF.	PAV'T FABRIC	SAW CUTS FOOT	TIE BARS EACH
	TYPE II SQ YD	TYPE III SQ YD	TYPE IV SQ YD					TYPE II SQ YD	TYPE III SQ YD	TYPE IV SQ YD				
203.20										27	27	27	88	18
203.21								8			8	8	60	
203.30								8			8	8	60	
203.32								8			8	8	60	
203.34									20		20	20	78	
203.60									20		20	20	78	
203.62								8			8	8	60	
203.71								8			8	8	60	
203.74								8			8	8	60	
203.80									20		20	20	78	
203.90								13			13	13	68	
203.93								8			8	8	60	
204.01								8			8	8	60	
204.20								8			8	8	60	
204.50								13			13	13	68	
204.51								8			8	8	60	
204.60								8			8	8	60	
204.61								8			8	8	60	
205.00		20		20	20	78		8			8	8	60	
205.30								8			8	8	60	
206.40								8			8	8	60	
208.40								8			8	8	60	
211.20								8			8	8	60	
212.40		20		20	20	78								
212.41								11			11	11	64	
213.91								8			8	8	60	
213.92	8			8	8	60		8			8	8	60	
213.92								11			11	11	64	
215.32	8			8	8	60								
215.35								13			13	13	68	
215.36								8			8	8	60	
PAGE 2 SUBTOTAL	16	40		56	56	276		221	60	27	308	308	1854	18
NB 14'' TOTALS	53	40	27	120	120	612	18	427	100	60	587	587	3616	41

SCHEDULE - NBL CLASS A PATCHING 9"												
LOCATION BY MILE MARKER	PASSING LANE					DRIVING LANE						
	CLASS A PATCHING			PATCH REINF.	SAW CUTS	TIE BARS	CLASS A PATCHING			PATCH REINF.	SAW CUTS	TIE BARS
	TYPE II	TYPE III	TYPE IV				TYPE II	TYPE III	TYPE IV			
SQ YD	SQ YD	SQ YD	SQ YD	FOOT	EACH	SQ YD	SQ YD	SQ YD	SQ YD	FOOT	EACH	
215.40							8			8	60	
215.50							13			13	68	
215.51	8			8	60							
216.20							8			8	60	
216.40	8			8	60							
216.70							8			8	60	
216.71							13			13	68	
216.80							8			8	60	
217.20							8			8	60	
217.30	8			8	60		8			8	60	
217.31									27	27	88	18
217.40							13			13	68	
217.41							13			13	68	
217.42							8			8	60	
217.70							13			13	68	
218.00	8			8	60		8			8	60	
TOTALS	32			32	240		131		27	157	908	18



SCHEDULE - SBL CLASS A PATCHING 14"														
LOCATION BY MILE MARKER	PASSING LANE							DRIVING LANE						
	CLASS A PATCHING			PATCH REINF.	PAV'T FABRIC	SAW CUTS	TIE BARS	CLASS A PATCHING			PATCH REINF.	PAV'T FABRIC	SAW CUTS	TIE BARS
	TYPE II	TYPE III	TYPE IV					TYPE II	TYPE III	TYPE IV				
SQ YD	SQ YD	SQ YD	SQ YD	SQ YD	FOOT	EACH	SQ YD	SQ YD	SQ YD	SQ YD	SQ YD	FOOT	EACH	
215.39								8			8	8	60	
215.30			27	27	27	88	18			27	27	27	88	18
214.90										27	27	27	88	18
214.98								8			8	8	60	
213.60		20		20	20	78								
213.50										33	33	33	98	23
213.49									20		20	20	78	
211.80		20		20	20	78								
211.79	8			8	8	60								
211.70	8			8	8	60								
211.10		20		20	20	78								
207.80	8			8	8	60								
207.79								8			8	8	60	
204.80		20		20	20	78							0	
204.30								8			8	8	60	
195.08										27	27	27	88	
195.00									20		20	20	78	
193.40								11			11	11	64	
TOTALS	24	80	27	131	131	580	18	43	40	113	196	196	822	59

SCHEDULE - SBL CLASS A PATCHING 9"													
LOCATION BY MILE MARKER	PASSING LANE						DRIVING LANE						
	CLASS A PATCHING			PATCH REINF.	SAW CUTS	TIE BARS	CLASS A PATCHING			PATCH REINF.	SAW CUTS	TIE BARS	
	TYPE II	TYPE III	TYPE IV				TYPE II	TYPE III	TYPE IV				
SQ YD	SQ YD	SQ YD	SQ YD	FOOT	EACH	SQ YD	SQ YD	SQ YD	SQ YD	FOOT	EACH		
218.00								8			8	60	
217.90	8				8	60							
217.89								8			8	60	
217.88	8				8	60							
217.80								8			8	60	
217.70								8			8	60	
216.60								8			8	60	
215.50		20		20	78				20		20	78	
215.49								8			8	60	
215.48	8				8	60							
215.47									20		20	78	
215.46	13				13	68							
215.40									20		20	78	
TOTAL	38	20		58	326			48	60		108	594	

SCHEDULE - PAVEMENT MARKING				
LOCATION		MODIFIED URETHANE PAVEMENT MARKING TYPE 1, LINE 4"		MODIFIED URETHANE PAVEMENT MARKING TYPE 1, LINE 6"
MILE POST		YELLOW	WHITE	WHITE
187.80	NB		6	10
190.70	NB		8	10
191.80	NB		6	10
193.40	NB		6	10
196.50	NB	6		10
196.51	NB	6		10
196.71	NB		6	10
197.23	NB	20		10
197.24	NB		25	10
197.30	NB		6	10
198.80	NB	10		10
199.20	NB		6	10
199.30	NB		6	10
199.90	NB	6		10
201.00	NB		6	10
201.50	NB		6	10
201.62	NB		6	10
201.70	NB		6	10
201.80	NB		6	10
201.90	NB		6	10
202.10	NB		6	10
202.20	NB		6	10
202.30	NB		6	10
202.32	NB		6	10
202.40	NB		6	10
202.50	NB		6	10
202.60	NB		8	10
202.70	NB		6	10
202.73	NB		15	10
202.80	NB		6	10
202.90	NB		6	10
203.00	NB		6	10
203.10	NB		15	10
203.20	NB		20	10
SUBTOTAL		48	229	340
PAGE 1 TOTAL		277		340

SCHEDULE - PAVEMENT MARKING				
LOCATION		MODIFIED URETHANE PAVEMENT MARKING TYPE 1, LINE 4"		MODIFIED URETHANE PAVEMENT MARKING TYPE 1, LINE 6"
MILE POST		YELLOW	WHITE	WHITE
203.21	NB		6	10
203.30	NB		6	10
203.32	NB		6	10
203.34	NB		15	10
203.60	NB		15	10
203.62	NB		6	10
203.71	NB		6	10
203.74	NB		6	10
203.80	NB		15	10
203.90	NB		10	10
203.93	NB		6	10
204.01	NB		6	10
204.20	NB		6	10
204.50	NB		10	10
204.51	NB		6	10
204.60	NB		6	10
204.61	NB		6	10
205.00	NB	15	6	10
205.30	NB		6	10
206.40	NB		6	10
208.40	NB		6	10
211.20	NB		6	10
212.40	NB	15		10
212.41	NB		8	10
213.91	NB		6	10
213.92	NB	6	6	10
213.92	NB		8	10
215.32	NB	6	0	10
215.35	NB		10	10
215.36	NB		6	10
SUBTOTAL		42	211	300
PAGE 2 TOTAL		253		300

SCHEDULE - PAVEMENT MARKING				
LOCATION		MODIFIED URETHANE PAVEMENT MARKING TYPE 1, LINE 4"		MODIFIED URETHANE PAVEMENT MARKING TYPE 1, LINE 6"
MILE POST		YELLOW	WHITE	WHITE
215.40	NB		6	10
215.50	NB		10	10
215.51	NB	6		10
216.20	NB		6	10
216.40	NB	6		10
216.70	NB		6	10
216.71	NB		10	10
216.80	NB		6	10
217.20	NB		6	10
217.30	NB	6	6	10
217.31	NB		20	10
217.40	NB		10	10
217.41	NB		10	10
217.42	NB		6	10
217.70	NB		10	10
218.00	NB	6	6	10
SUBTOTAL		24	118	160
PAGE 3 TOTAL		142		160
NB TOTAL		672		800

FILE NAME =	USER NAME = santeoruzje	DESIGNED - _____	REVISED - _____
o:\pwork\pilot\seanteoruzje\036078\shd-details.dgn	36078-shd-details.dgn	DRAWN - _____	REVISED - _____
#MODELNAME#	PLOT SCALE = 500000.0018 1 / in.	CHECKED - _____	REVISED - _____
	PLOT DATE = 3/31/2014	DATE - _____	REVISED - _____

STATE OF ILLINOIS  
DEPARTMENT OF TRANSPORTATION

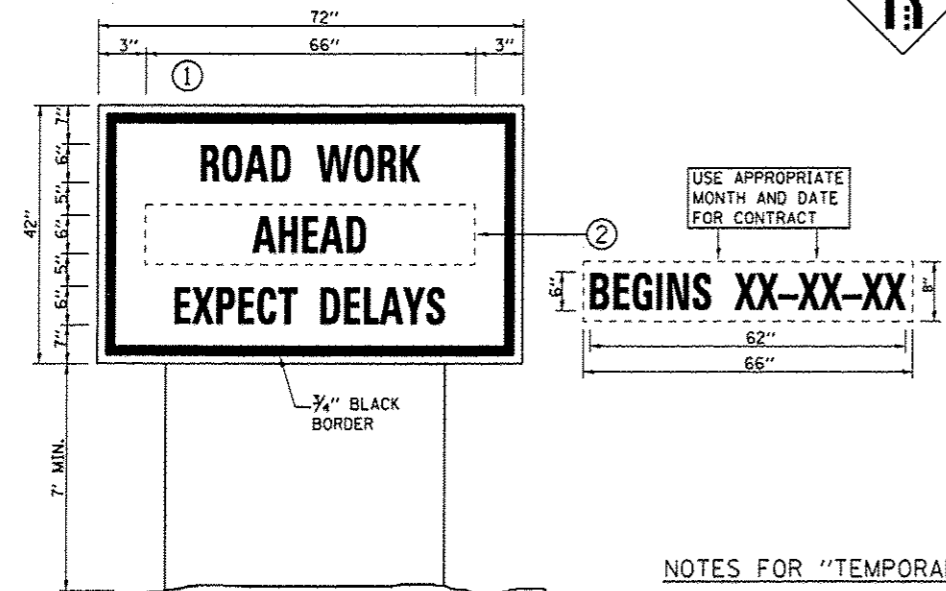
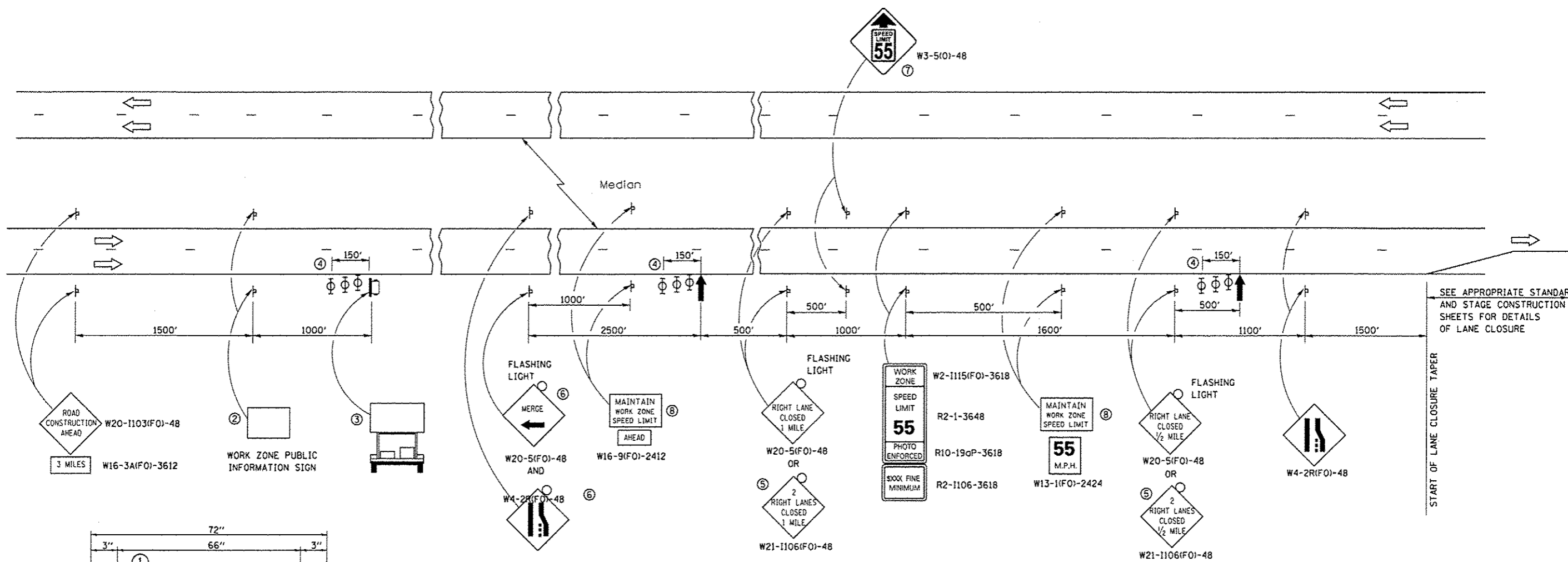
SCHEDULES

SCALE: \_\_\_\_\_ SHEET 5 OF 6 SHEETS STA. \_\_\_\_\_ TO STA. \_\_\_\_\_

F.A.I. RTE.	SECTION	COUNTY	TOTAL SHEETS	SHEET NO.
55	D3 PATCHING 2015-2	LIVINGSTON	15	10
ILLINOIS FED. AID PROJECT			CONTRACT NO. 66D78	

SCHEDULE - PAVEMENT MARKING				
LOCATION		MODIFIED URETHANE PAVEMENT MARKING TYPE 1, LINE 4"		MODIFIED URETHANE PAVEMENT MARKING TYPE 1, LINE 6"
MILE POST		YELLOW	WHITE	WHITE
215.39	SB		6	10
215.30	SB	20	20	10
214.90	SB		20	10
214.98	SB		6	10
213.60	SB	15		10
213.50	SB		25	10
213.49	SB		15	10
211.80	SB	15		10
211.79	SB	6		10
211.70	SB	6		10
211.10	SB	15		10
207.80	SB	6		10
207.79	SB		6	10
204.80	SB	15		10
204.30	SB		6	10
195.08	SB		20	10
195.00	SB		15	10
193.40	SB		8	10
SUBTOTAL		98	147	180
PAGE 1 TOTAL		245		180

SCHEDULE - PAVEMENT MARKING				
LOCATION		MODIFIED URETHANE PAVEMENT MARKING TYPE 1, LINE 4"		MODIFIED URETHANE PAVEMENT MARKING TYPE 1, LINE 6"
MILE POST		FOOT		FOOT
		YELLOW	WHITE	WHITE
218.00	SB		6	10
217.90	SB	6		10
217.89	SB		6	10
217.88	SB	6		10
217.80	SB		6	10
217.70	SB		6	10
216.60	SB		6	10
215.50	SB	15	15	10
215.49	SB		6	10
215.48	SB	6		10
215.47	SB		15	10
215.46	SB	10		10
215.40	SB		15	10
SUBTOTAL		43	81	130
PAGE 2 TOTAL		124		130
SB TOTAL		369		310



**TEMPORARY INFORMATION SIGNING**

- ① THE ROAD CONSTRUCTION AHEAD SIGN SHALL BE LOCATED 3 MILES IN ADVANCE OF THE PROJECT LIMITS.
- ② THE MESSAGE AND SIZE OF THE WORK ZONE PUBLIC INFORMATION SIGN SHALL BE AS SPECIFIED BY THE DEPARTMENT.
- ③ TO BE PLACED IN THE MEDIAN WHEN FEASIBLE. THE MESSAGE BOARD SHALL BE USED TO DISPLAY STATUS OF LANES WITHIN THE PROJECT. THE PRIMARY MESSAGES SHALL BE:  
 "RIGHT LANE CLOSED" / " x MILES AHEAD"  
 "LEFT LANE CLOSED" / " x MILES AHEAD"  
 "ALL LANES OPEN"
- ④ THREE, TYPE II BARRICADES, DRUMS, OR VERTICAL BARRICADES AT 50' CENTERS.
- ⑤ THIS SIGN SHALL BE USED WHEN 2 LANES ARE CLOSED.
- ⑥ WHEN THE LEFT LANE IS CLOSED, SWITCH THESE TWO SIGNS AND THE DIRECTION OF THE MERGE ARROW.
- ⑦ THIS SIGN SHALL ONLY BE USED IF THE EXISTING SPEED LIMIT IS GREATER THAN 65 MPH.
- ⑧ 48"x36" FLUORESCENT ORANGE SIGN WITH BLACK LETTERS.



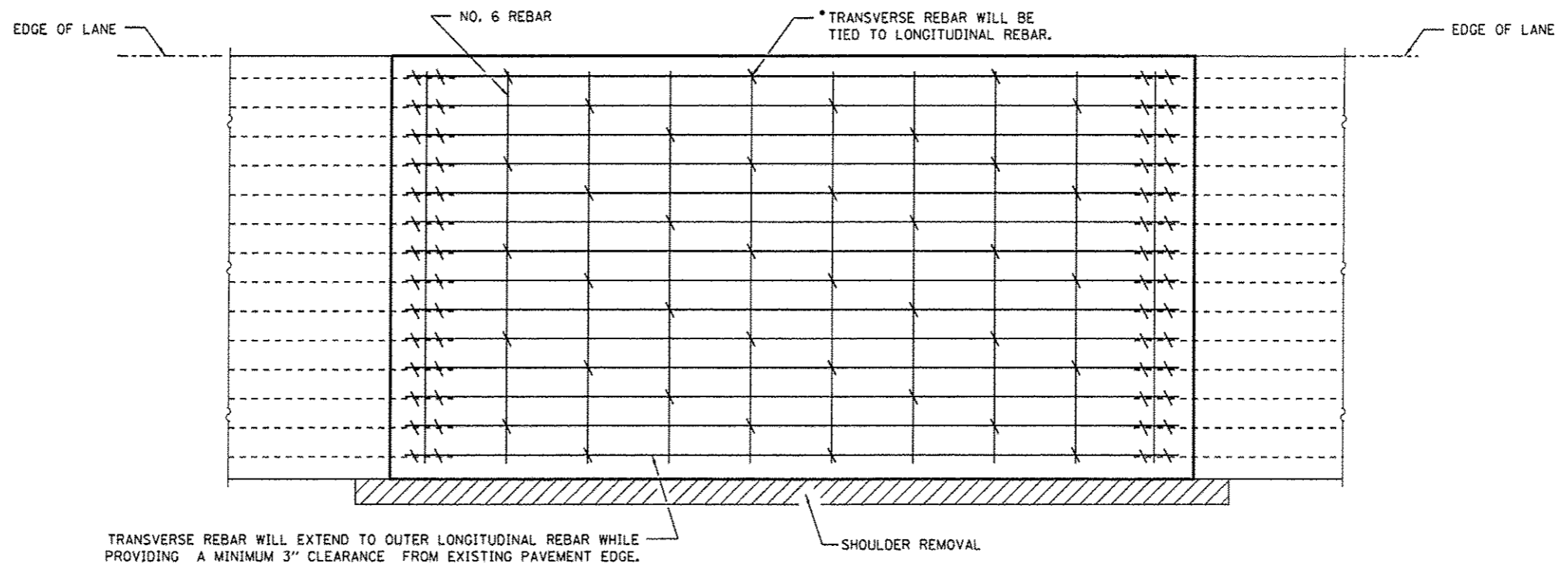
- ↑ ARROW BOARD
- PORTABLE CHANGEABLE MESSAGE SIGN
- ⊥ SIGN
- ⊕ TYPE II BARRICADE, DRUM, OR VERTICAL BARRICADE WITH MONODIRECTIONAL FLASHING LIGHT

**GENERAL NOTE:**  
 THIS STANDARD IS USED WHERE AT ANY TIME A LANE IS CLOSED ON A FREEWAY/EXPRESSWAY.  
 WHEN THE LEFT LANE IS CLOSED, LEFT LANE CLOSED SIGNS SHALL BE SUBSTITUTED FOR THE RIGHT LANE CLOSED SIGNS.  
 THE FIRST TWO SIGNS AND THE MESSAGE BOARD ARE STATIONARY. THE OTHER SIGNS AND ARROWBOARDS SHALL BE MOVED AS NECESSARY TO MAINTAIN THE REQUIRED DISTANCE FROM THE START OF THE LANE CLOSURE TAPER(S).  
 SEE SPECIAL PROVISIONS.

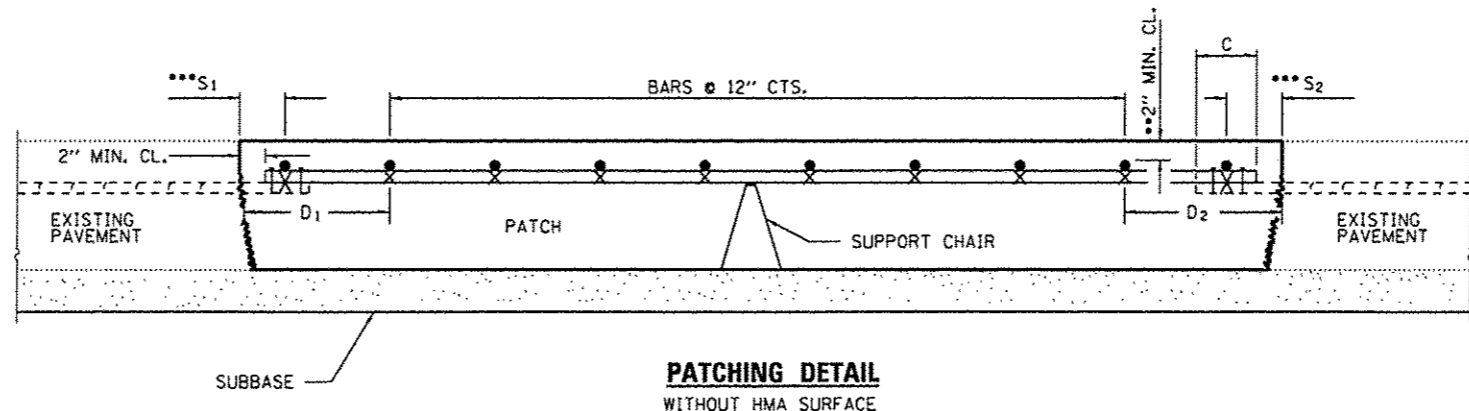
**NOTES FOR "TEMPORARY INFORMATION SIGNING"**

1. USE 6" D BLACK LETTERING ON FLOURESENT ORANGE BACKGROUND.
2. ERECT SIGNS AT LOCATIONS IN ADVANCE OF THE "ROAD CONSTRUCTION AHEAD" SIGNS AS DIRECTED BY THE ENGINEER.
3. ERECT SIGN ① WITH INSTALLED PANEL ② A MINIMUM OF ONE WEEK PRIOR TO THE START OF THE LANE CLOSURE.
4. REMOVE PANEL ② ON THAT DATE.
5. SEE SPECIAL PROVISION "TEMPORARY INFORMATION SIGNING" FOR ADDITIONAL INFORMATION.
6. WILL BE PAID FOR PER SQ FT AS "TEMPORARY INFORMATION SIGNING". EACH SIGN = 21 SQ FT AND THE DATE PANEL ② WILL NOT BE MEASURED SEPARATELY FOR PAYMENT.

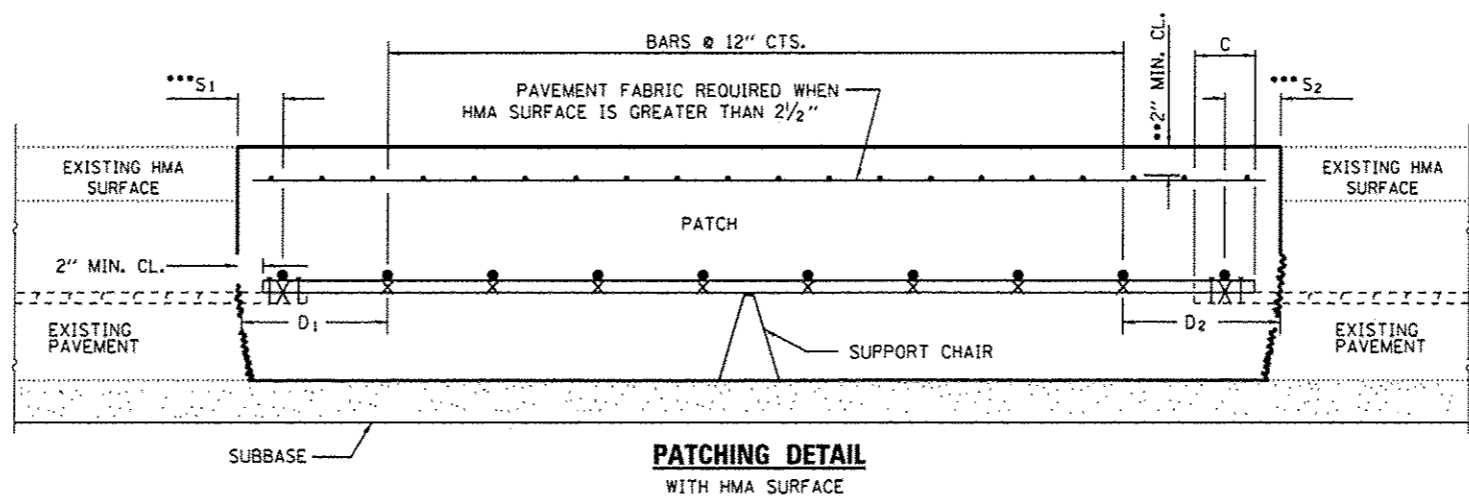




**PAVEMENT REINFORCEMENT DETAIL**



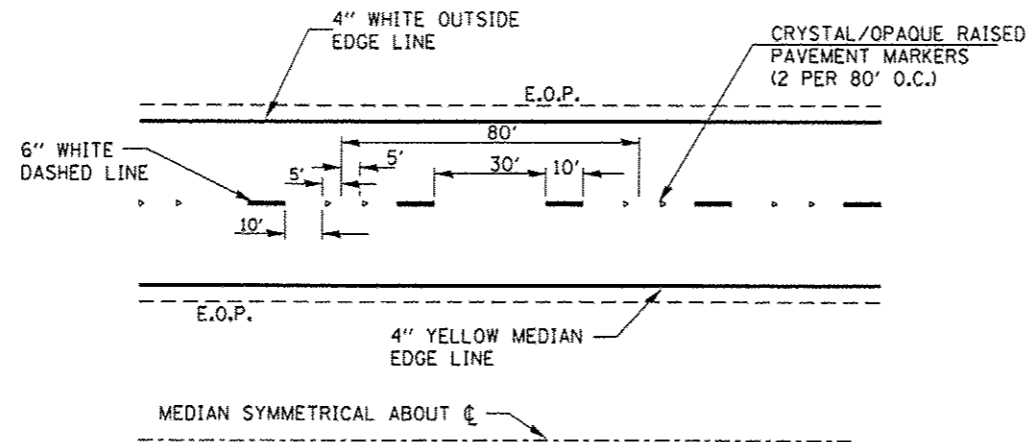
**PATCHING DETAIL  
WITHOUT HMA SURFACE**



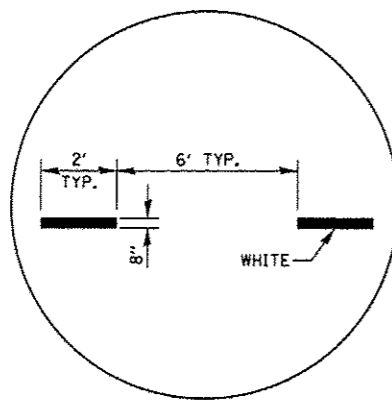
**PATCHING DETAIL  
WITH HMA SURFACE**

- EVERY 3<sup>rd</sup> INTERSECTION MUST BE TIED.
- WHEN THE MINIMUM CLEARANCE CANNOT BE OBTAINED WITH THE TRANSVERSE REBAR ON TOP, THEN THE TRANSVERSE REBAR SHALL BE TIED TO THE BOTTOM OF THE LONGITUDINAL REBAR.
- VARIABLES: WHERE S<sub>1</sub> AND S<sub>2</sub> ARE 2 1/2" MIN. AND 12" MAX. D<sub>1</sub> = 2(S<sub>1</sub>) AND D<sub>2</sub> = 2(S<sub>2</sub>).

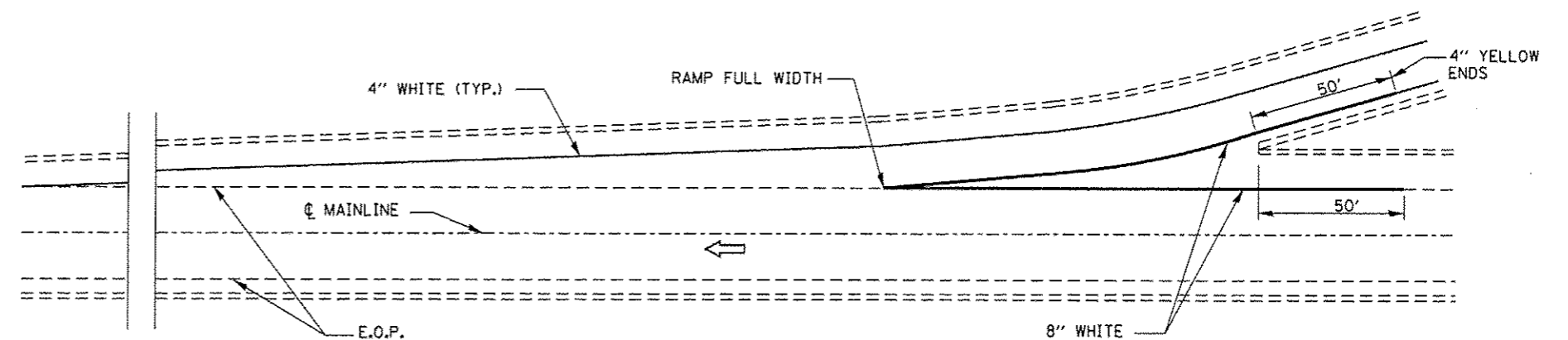
FILE NAME *	USER NAME * santacruzja	DESIGNED -	REVISED -	<b>STATE OF ILLINOIS DEPARTMENT OF TRANSPORTATION</b>	<b>CLASS A PATCHES</b>	F.A.I. RTE.	SECTION	COUNTY	TOTAL SHEETS	SHEET NO.	
c:\pwork\pedit\santacruzja\0308031\0366078-sht-details.dgn	0366078-sht-details.dgn	DRAWN -	REVISED -			55	D3 PATCHING 2015-2	LIVINGSTON	15	14	
#MODELNAME#	PLOT SCALE * 500000.0018 / in.	CHECKED -	REVISED -			CONTRACT NO. 66D78					
	PLOT DATE * 3/31/2014	DATE -	REVISED -			[ILLINOIS] FED. AID PROJECT					



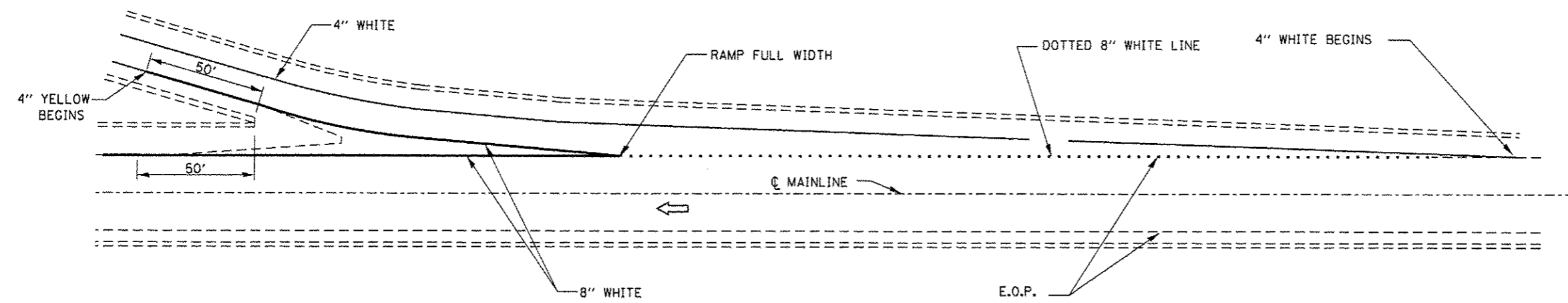
**TYPICAL PAVEMENT MARKINGS**



**INTERSTATE RAMP TRANSITION LINE**



**TYPICAL PAVEMENT MARKING FOR ENTRANCE RAMP TERMINALS**



**TYPICAL PAVEMENT MARKINGS FOR EXIT RAMP TERMINALS**

FILE NAME :	USER NAME :	DESIGNED -	REVISED -
o:\pwork\p\idat\seantearuzje\0366078-ah1-detailed.dgn	seantearuzje	-	-
PLOT SCALE :	CHECKED -	REVISED -	REVISED -
500000.0018' / in.	-	-	-
PLOT DATE :	DATE -	REVISED -	REVISED -
3/31/2014	-	-	-

STATE OF ILLINOIS  
DEPARTMENT OF TRANSPORTATION

**TYPICAL PAVEMENT MARKINGS**

SCALE: SHEET 1 OF 1 SHEETS STA. TO STA.

F.A.I. RTE.	SECTION	COUNTY	TOTAL SHEETS	SHEET NO.
55	03 PATCHING 2015-2	LIVINGSTON	15	15
CONTRACT NO. 66078				
ILLINOIS FED. AID PROJECT				