

STATE OF ILLINOIS
DEPARTMENT OF TRANSPORTATION

F.A.P. RTE.	SECTION	COUNTY	TOTAL SHEETS	SHEET NO.
823	D7 BEAM REPAIR 2019-2	WAYNE	4	1
		ILLINOIS	CONTRACT NO. 74911	

D-97-028-19



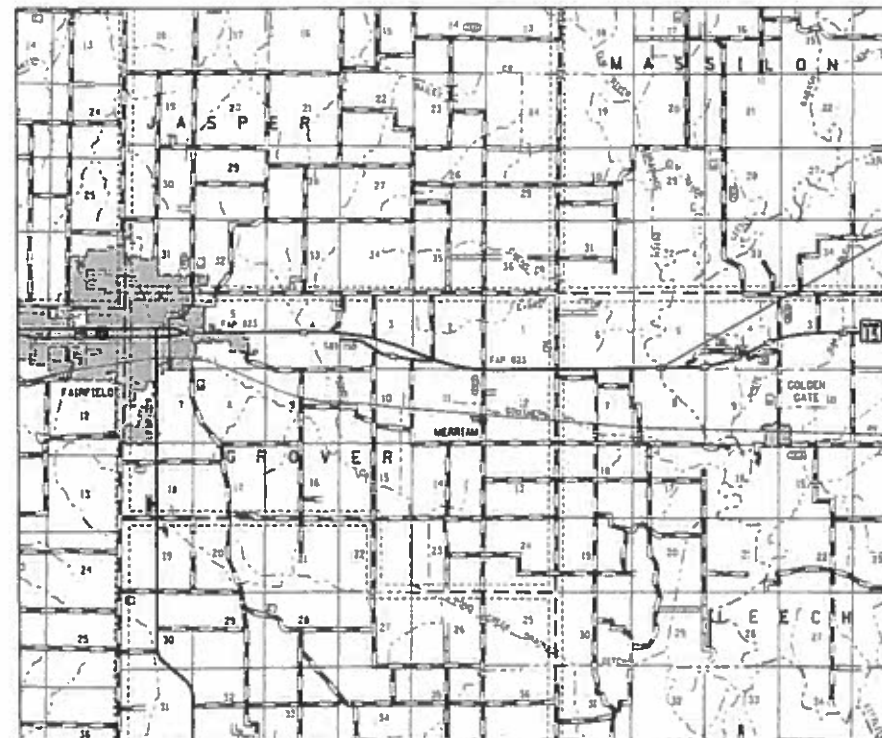
FOR INDEX OF SHEETS, SEE SHEET NO. 2

PROPOSED HIGHWAY PLANS

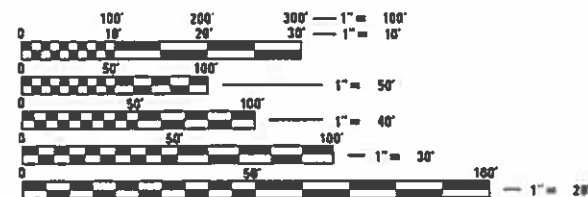
F.A.P. ROUTE 823 (IL 15)
SECTION D7 BEAM REPAIR 2019-2
PROJECT NHPP-EWFB(849)
BEAM REPAIR
WAYNE COUNTY

C-97-042-19

ADT (2017) = 2,800



SN 096-0010
STA 492+75



FULL SIZE PLANS HAVE BEEN PREPARED USING STANDARD ENGINEERING SCALES. REDUCED SIZED PLANS WILL NOT CONFORM TO STANDARD SCALES. IN MAKING MEASUREMENTS ON REDUCED PLANS, THE ABOVE SCALES MAY BE USED.

J.U.L.I.E.
JOINT UTILITY LOCATION INFORMATION FOR EXCAVATORS
1-800-892-0123
OR 811

PROJECT ENGINEER: DEBRA BARRETT
PROJECT MANAGER: BRIAN BIERMAN

GROSS LENGTH = 1,157 FT. = 0.219 MILE
NET LENGTH = 1,157 FT. = 0.219 MILE

CONTRACT NO. 74911

STATE OF ILLINOIS
DEPARTMENT OF TRANSPORTATION

SUBMITTED March 22, 2019
Jeffrey M. Smith/CS
REGIONAL ENGINEER

March 10, 2019
EA/ETK
ENGINEER OF DESIGN AND ENVIRONMENT

March 10, 2019
Paul J. [Signature]
DIRECTOR OF HIGHWAYS PROJECT IMPLEMENTATION

PRINTED BY THE AUTHORITY
OF THE STATE OF ILLINOIS

GENERAL NOTES

THE WORK INCLUDED IN THIS SECTION CONSISTS OF STEEL BEAM END REPAIRS ON SN 096-0010 CARRYING IL 15 OVER THE LITTLE WABASH RIVER AND ANY OTHER WORK NECESSARY TO COMPLETE THIS SECTION.

INDEX OF SHEETS

SHEET NO.	ITEM
1	COVER SHEET
2	INDEX OF SHEETS & GENERAL NOTES
3	SUMMARY OF QUANTITIES
4	REPAIR DETAILS

THE FOLLOWING STANDARDS ARE A PART OF THESE PLANS AND ARE INCLUDED FOLLOWING THE LAST NUMBERED SHEET OF THE PLANS.

STD NO.	DESCRIPTION
000001-07	STANDARD SYMBOLS, ABBREVIATIONS, AND PATTERNS
001006	DECIMAL OF AN INCH AND OF A FOOT
701001-02	OFF-RD OPERATIONS, 2L, 2W, MORE THAN 15' AWAY
701006-05	OFF-RD OPERATIONS, 2L, 2W, 15' TO 24" FROM PAVEMENT EDGE
701301-04	LANE CLOSURE, 2L, 2W, SHORT TIME OPERATIONS
701901-08	TRAFFIC CONTROL DEVICES

MODEL: Default
 FILE: \\blm1c01.pw.usplanner.com\data\illinois.gov\PW\DOT\Documents\IBDOT_Offices\District 7\Projects\74911\CADD\data\CAD\Drawings\74911-1-shc-gen-note.dgn

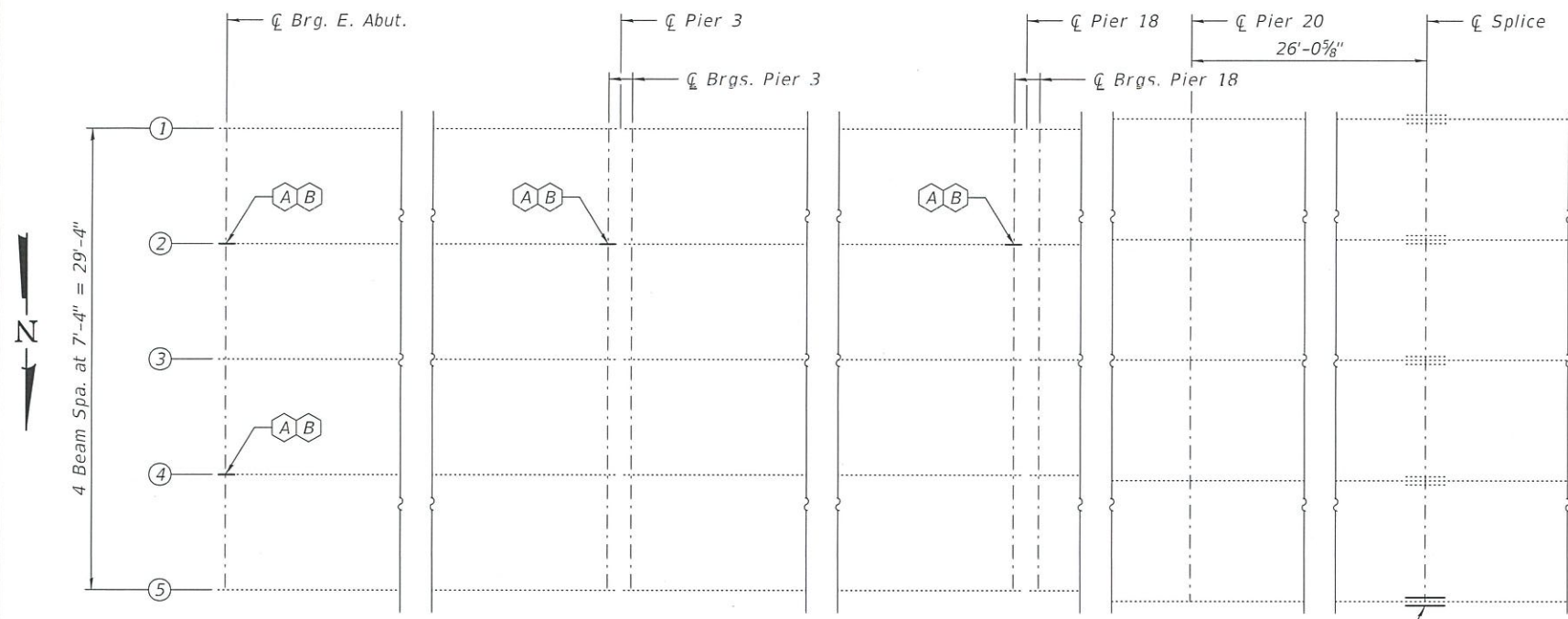
USER NAME = steffenmk	DESIGNED -	REVISED -
	DRAWN -	REVISED -
PLOT SCALE = 100.0000 ' / in.	CHECKED -	REVISED -
PLOT DATE = 3/22/2019	DATE -	REVISED -

**STATE OF ILLINOIS
DEPARTMENT OF TRANSPORTATION**

INDEX OF SHEETS & GENERAL NOTES

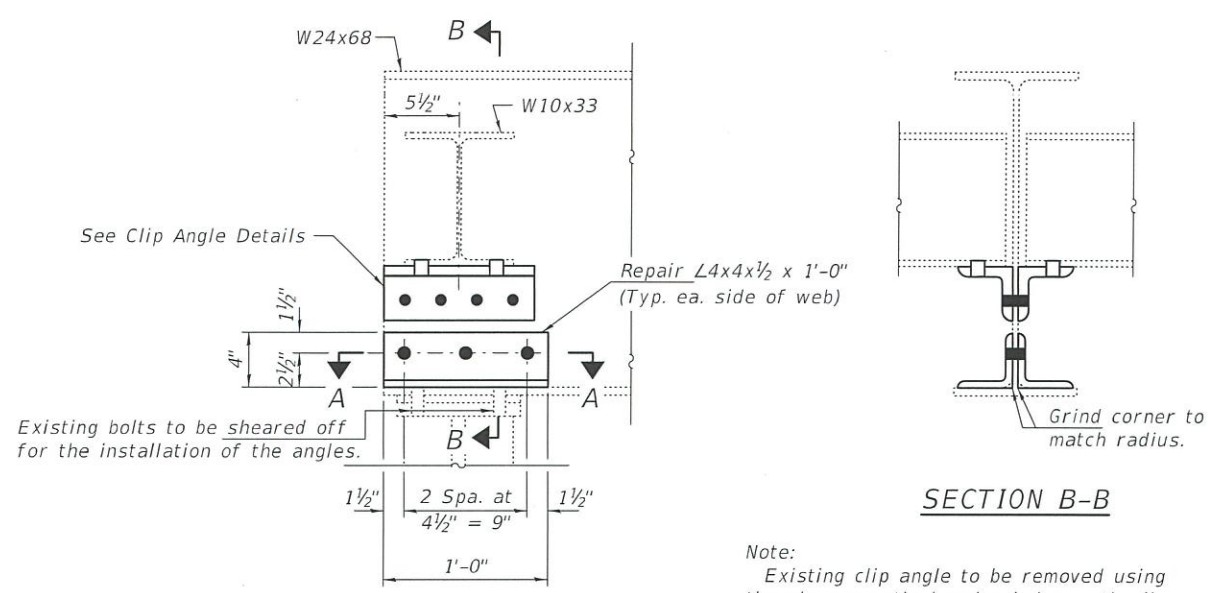
SCALE: SHEET OF SHEETS STA. TO STA.

F.A.P. RTE.	SECTION	COUNTY	TOTAL SHEETS	SHEET NO.
823	D7 BEAM REPAIR 2019-2	WAYNE	4	2
			CONTRACT NO. 74911	
		ILLINOIS	FED. AID PROJECT	



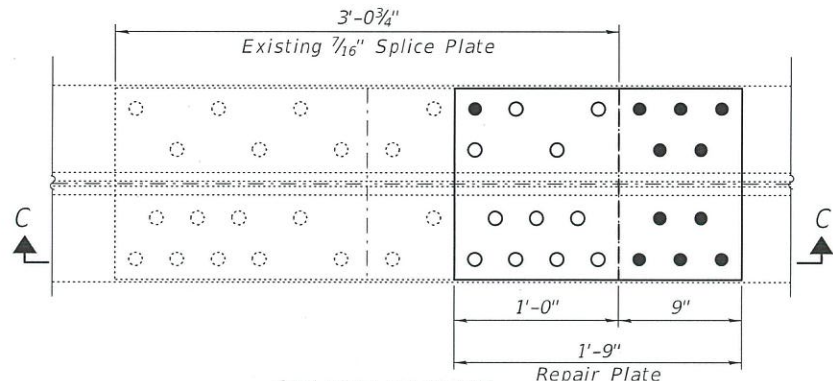
PARTIAL PLAN

- (A) - Remove and Replace Clip Angles, each side of beam.
- (B) - Beam End Repair.
- (C) - Splice Repair

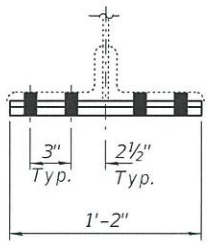


BEAM END REPAIR
(4 Locations)

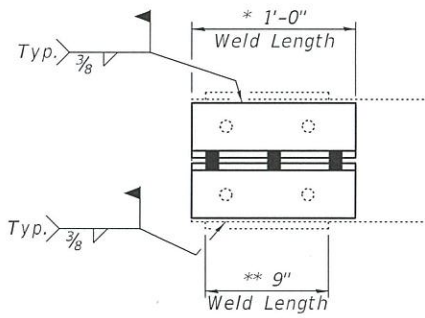
Note:
Existing clip angle to be removed using the air-arc method and grind smooth all weld material remaining on the web. Cost included with Structural Steel Repair.



SPLICE REPAIR
(1 Location)

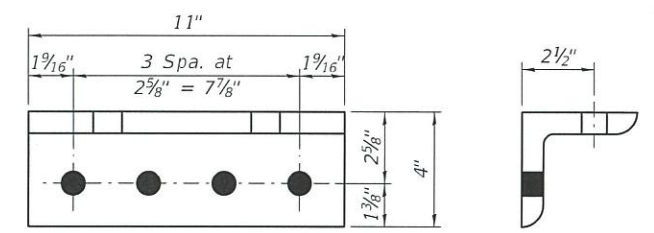


SECTION D-D

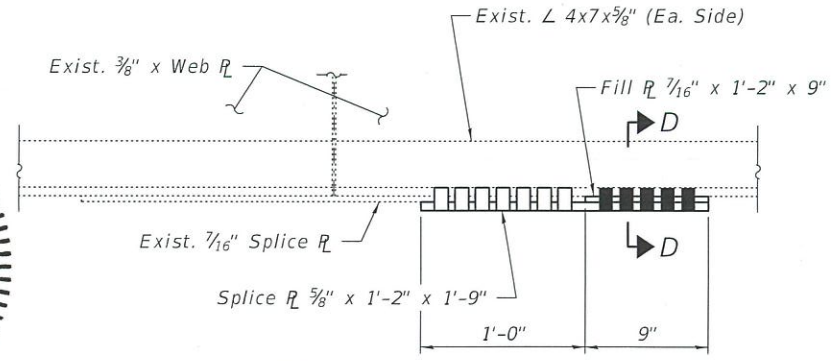


SECTION A-A

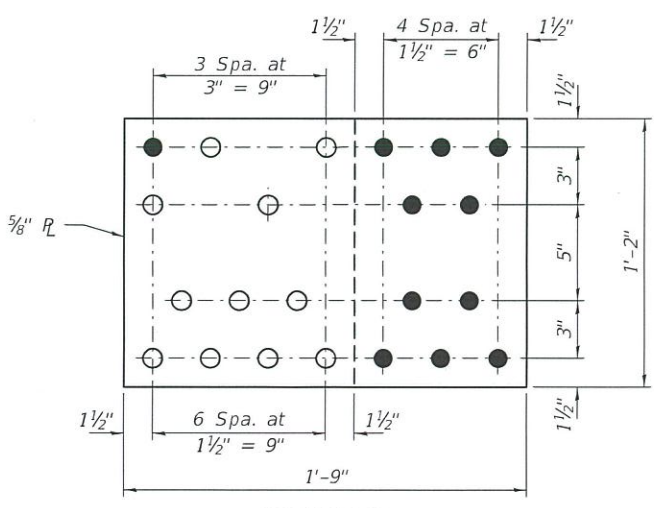
* Repair L to top of bottom flange.
** Bottom of bottom flange to top of bearing plate.



CLIP ANGLE DETAILS
L 4x4x 3/4" x 11" long
(8 Required)



SECTION C-C



SPLICE R

NOTES

All structural steel shall conform to AASHTO Classification M-270 Gr. 36, unless otherwise noted.

Plan dimensions and details relative to existing plans are subject to nominal construction variations. The Contractor shall field verify existing dimensions and details affecting new construction and make necessary approved adjustments prior to construction or ordering of materials. Such variations shall not be cause for additional compensation for a change in scope of the work, however, the Contractor will be paid for the quantity actually furnished at the unit price bid for the work.

All new structural steel shall be hot-dip galvanized. See Special Provision for "Hot Dip Galvanizing for Structural Steel."

Fasteners shall be high strength bolts. Bolts 3/4"Ø, open holes 1 3/16"Ø, unless otherwise noted.

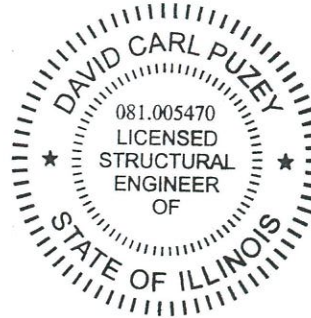
Existing structural steel that will be in contact with new structural steel shall be cleaned and painted prior to erection as required by the special provision "Cleaning and Painting Contact Surface Areas of Existing Steel Structures".

BOLT HOLE LEGEND

- - Field drill using existing steel as template, except as noted.
- - Use holes in new steel as template.

TOTAL BILL OF MATERIAL

ITEM	UNIT	QUANTITY
Structural Steel Repair	Pound	350



EXPIRES 11-30-2020

DESIGNED - <i>Vicki H. Metz</i>	EXAMINED - <i>Tim A. DeHa</i>	DATE - MAY 2, 2019
CHECKED - <i>aw</i>	ENGINEER OF STRUCTURAL SERVICES	REVISD -
DRAWN - <i>daburdell</i>	PASSED - <i>David Carl Puzey</i>	REVISD -
CHECKED -	ENGINEER OF BRIDGES AND STRUCTURES	

STATE OF ILLINOIS
DEPARTMENT OF TRANSPORTATION

REPAIR DETAILS
FAP 823 OVER LITTLE WABASH RIVER
SN 096-0010

SHEET NO. 1 OF 1 SHEETS

F.A.P. RTE. 823	SECTION D7 BEAM REPAIR 2019-2	COUNTY WAYNE	TOTAL SHEETS 4	SHEET NO. 4
CONTRACT NO. 74911			ILLINOIS FED. AID PROJECT	