

INDEX OF SHEETS

SHEET NO.	ITEM
1	COVER SHEET
2	INDEX OF SHEETS/ HIGHWAY STANDARDS/ GENERAL NOTES
3-4	SUMMARY OF QUANTITIES
5	S.N. 057-0193 GENERAL PLAN AND ELEVATION
6	TYPICAL CROSS-SECTION
7-9	STAGING DETAILS
10	DETAIL OF TEMPORARY CONCRETE BARRIER
11-23	REPAIR PLAN DETAILS
24-25	WIDTH RESTRICTION DETAILS
26-35	AS-BUILT PLANS

LIST OF STANDARDS

STANDARD NO.	DESCRIPTION
000001-07	STANDARD SYMBOLS, ABBREVIATIONS AND PATTERNS
001001-02	AREAS OF REINFORCEMENT BARS
001006	DECIMAL OF AN INCH AND OF A FOOT
701601-09	URBAN LANE CLOSURES, MULTILANE, 1W OR 2W WITH NONTRAVERSABLE MEDIAN
701801-06	SIDEWALK, CORNER OR CROSSWALK CLOSURE
701901-08	TRAFFIC CONTROL DEVICES
704001-08	TEMPORARY CONCRETE BARRIER

GENERAL NOTES

G.N.-100

ENGLISH UNITS OF MEASUREMENT SHALL GOVERN OVER AND SUPERSEDE ANY METRIC UNITS SHOWN IN THIS CONTRACT. WHERE INCLUDED, METRIC UNITS ARE FOR INFORMATION ONLY.

G.N.-107.12

THE NAME, ADDRESS AND TELEPHONE NUMBER OF THE LOCAL RAILROAD CONTACT IS:

Mr. Scott Overbey
 Engineer of Public Improvements
 Norfolk Southern Railway Company
 1200 Peachtree St., NE
 Atlanta, GA 30309
 (404) 582-5588 (0)
 (404) 529-2589 (f)
 scott.overbey@nscorp.com

SPECIAL ATTENTION IS CALLED TO ARTICLE 107.12 REGARDING RAILROAD FLAGGERS. THE NAME, ADDRESS AND TELEPHONE NUMBER OF THE RAILROAD CONTACT PERSON FOR FLAGGERS IS:

Flagging will be assigned by Norfolk Southern once their Right of Entry and Insurance requirements have been met

Some railroads require contractors to obtain a Right Of Entry Permit before entering upon railroad right of way. It is the responsibility of the Contractor to obtain a Railroad Right of Entry permit from the railroad if required by the railroad(s).

G.N.-406

THE QUANTITIES INCLUDED IN THE PLANS FOR HOT-MIX ASPHALT RESURFACING ARE INTENDED TO GIVE THE COVERAGE SHOWN ON THE TYPICAL CROSS SECTIONS. IT IS NOT INTENDED TO INCREASE THE THICKNESS OF THE HOT-MIX ASPHALT MIXTURE IN ORDER TO USE ALL OF THE QUANTITIES INCLUDED IN THE CONTRACT.

G.N. -406H

MIXTURE REQUIREMENTS

THE FOLLOWING MIXTURE REQUIREMENTS ARE APPLICABLE FOR THIS PROJECT:

Location	Structure 057-0193
Mixture Use	Surface
AC/PG	PG 64-22
Design Air Voids	4.0% @ Ndes=50
Mix Comp(Gradation)	IL 9.5
Friction Aggregate	Mix D
Mixture Weight	112
Quality Management Program	QC/QA
Sublot Size	N.A.

G.N.-1004.01

COARSE AGGREGATE GRADATION CA-10 MAY BE USED WHENEVER COARSE AGGREGATE CA-6 IS SPECIFIED IN THE STANDARD SPECIFICATIONS.

THERE ARE NO COMMITMENTS ASSOCIATED WITH THIS PROJECT

ALL WORK TO BE PERFORMED ON, OVER, UNDER, OR ADJACENT TO THE RAILROAD RIGHT-OF-WAY SHALL COMPLY WITH THE NORFOLK SOUTHERN RAILWAY COMPANY ("RAILROAD", "NSR" OR "NS") PUBLIC PROJECTS MANUAL (APPENDIX E, SPECIAL PROVISIONS FOR THE PROTECTION OF RAILWAY INTERESTS, AND APPENDIX H1, OVERHEAD GRADE SEPARATION DESIGN CRITERIA). WHEN IN CONFLICT WITH OTHER PROJECT SPECIFICATIONS, THE MOST STRINGENT ONE SHALL APPLY.

FOR PROJECTS REQUIRING MORE THAN 30 CONSECUTIVE DAYS OF FLAGGING, THE CONTRACTOR SHALL PROVIDE THE FLAGMAN A SMALL WORK AREA WITH A DESK/COUNTER AND CHAIR WITHIN THE FIELD SITE TRAILER, INCLUDING THE USE OF BATHROOM FACILITIES, WHERE THE FLAGMAN CAN CHECK IN/OUT WITH THE PROJECT, AS WELL AS THE FLAGMAN'S HOME TERMINAL. THE WORK AREA THE WORK AREA SHOULD PROVIDE ACCESS TO TWO (2) ELECTRICAL OUTLETS FOR RECHARGING RADIO(S), AND A LAPTOP COMPUTER; AND HAVE THE ABILITY TO PRINT OF NEEDED DOCUMENTATION AND ORDERS AS NEEDED AT THE FIELD SITE TRAILER. THIS SHOULD AID IN MAXIMIZING THE FLAGMAN'S TIME AND EFFICIENCY ON THE PROJECT.

**STATE OF ILLINOIS
DEPARTMENT OF TRANSPORTATION**

INDEX OF SHEETS/HIGHWAY STANDARDS/GENERAL NOTES

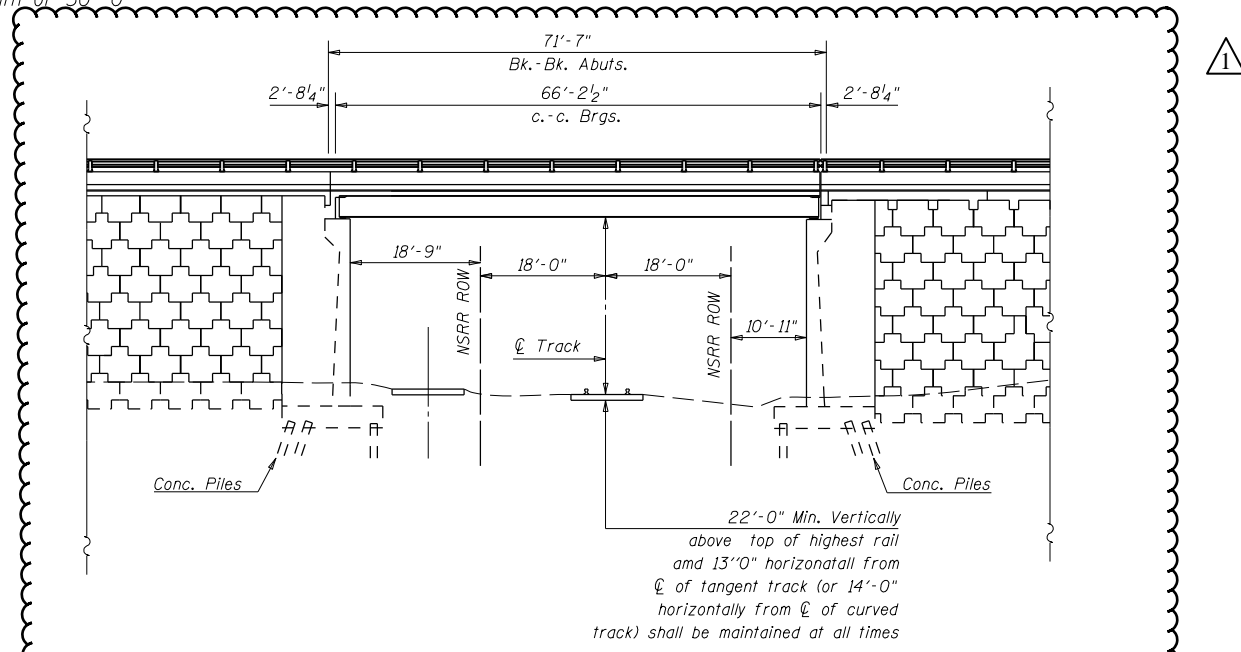
SCALE: NONE SHEET 1 OF 1 SHEETS STA. TO STA.

F.A.P. RTE.	SECTION	COUNTY	TOTAL SHEETS	SHEET NO.
730	(61Z-1)RS-2	MCLEAN	35	2
CONTRACT NO. 70D47				

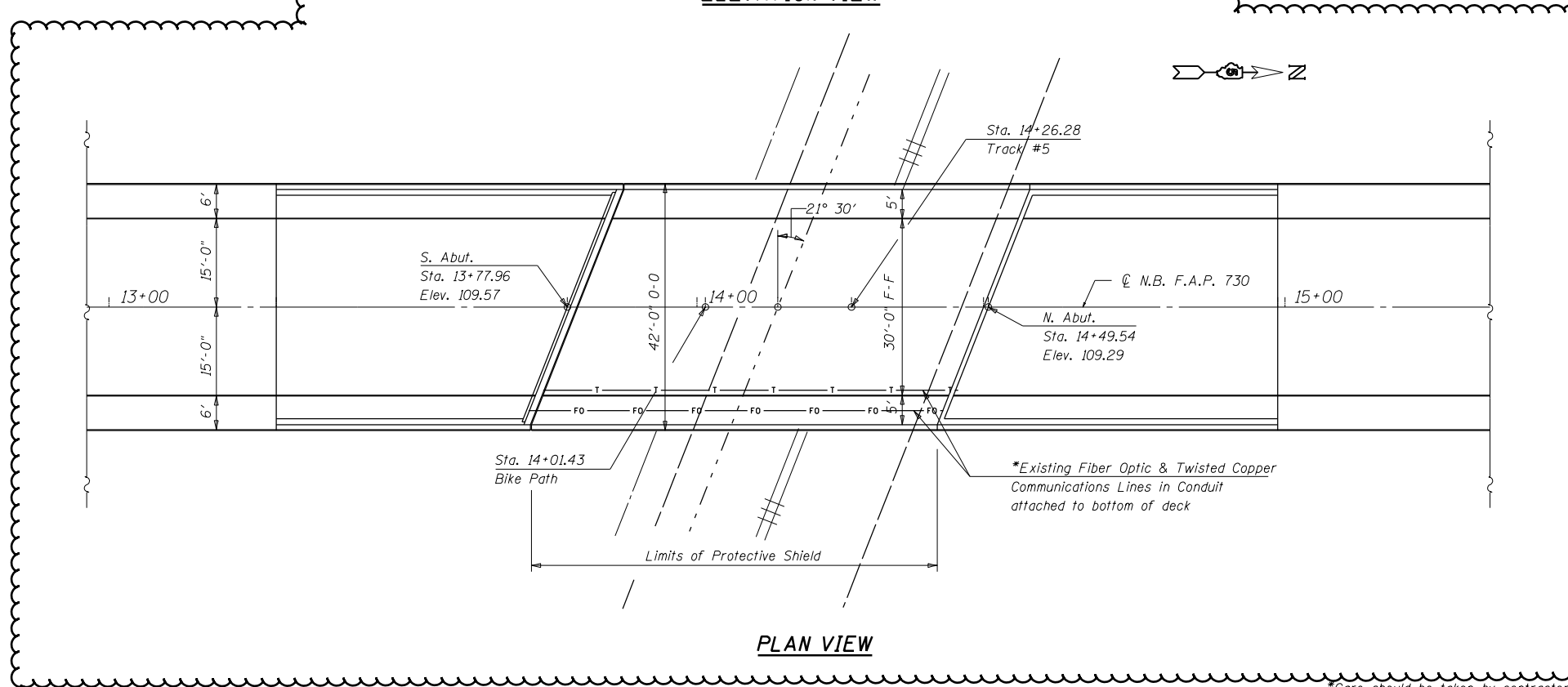
ILLINOIS FED. AID PROJECT

S.N. 057-0193 was originally built in 1981 as F.A. Route ALT, Section (8CS)BR at station 14+13.75.

The Structure is a single span, steel beam bridge on concrete supported abutments. The Structure has a Back-to-Back Abutment Length of 71'-7", Out-to-Out Width of 42'-0", Bridge Roadway Width of 30'-0", and an Approach Roadway Width of 30'-0"



ELEVATION VIEW



PLAN VIEW

GENERAL NOTES

Plan Dimensions and Details Relative to the Existing Plans are Subject to Nominal Construction Variations. The Contractor Shall Field Verify Existing Dimensions and Details Affecting New Construction and Make Necessary Approved Adjustments Prior to Construction or Ordering of Materials. Such Variations Shall not be Cause for Additional Compensation for a Change in Scope of Work, However, the Contractor Will Be Paid for the Quantity Actually Furnished at the Unit Price Bid for Work.

See Special Provision "Deck Slab Repair" for Additional Requirements Pertaining to Deck Slab Repair.

Areas of Deck Slab Repairs Shown are Estimated. The Engineer Shall show Actual Locations of Deck Repairs on As-Built Plans.

PROPOSED WORK

1. Remove Existing Waterproofing Membrane
2. Remove Existing HMA from Approaches
3. Deck Slab Repair FD
4. Deck Slab Repair PD
5. Approach Slab Repair PD
6. Jack, remove, and replace Bearings at abutments.
7. Replace Diaphragms at Abutments
8. Concrete Removal at Approaches
9. Place Preformed Joint Strip Seal
10. Place Concrete Superstructures
11. Structural Concrete Repair to Super/Substructure
12. Place Waterproofing Membrane System
13. Place HMA Surface Course

INDEX OF SHEETS

1. General Plan and Elevation
2. Deck Cross Sections
- 3.-6. Staging Details
7. Wearing Surface Plan
- 8.-9. Detail of Concrete Removal
- 10.-11. Detail of Concrete Superstructures
- 12.-14. Preformed Joint Strip Seal Detail
15. Repair Details at Diaphragms
16. Detail of Bridge Deck Patching
- 17.-19. Structural Concrete Repair Detail

TOTAL BILL OF MATERIAL

ITEM	UNIT	TOTAL
Concrete Removal	Cu. Yd.	13.6
Protective Shield	Sq. Yd.	326.0
Concrete Superstructures	Cu. Yd.	14.3
Protective Coat	Sq. Yd.	67.0
Furnish & Erect Structural Steel	Pound	1,840.0
Reinforcement Bars Epoxy Coated	Pound	865.0
Bar Splicers	Each	17.0
Preformed Joint Strip Seal	Foot	44.0
Elastomeric Bearing Assembly Type 1	Each	6.0
Anchor Bolts 1" φ	Each	14.0
Waterproofing Membrane System	Sq. Yd.	564.0
Concrete Anchors	Each	174.0
Approach Slab Repair (Partial Depth)	Sq. Yd.	34.0
Jack and Remove Existing Bearings	Each	6.0
Structural Steel Removal	Pound	1,840.0
HMA Surface Removal (Deck)	Sq. Yd.	230.0
Structural Concrete Repair <5"	Sq. Ft.	417.0
Deck Slab Repair (Full-Depth) Type 2	Sq. Yd.	17.0
Deck Slab Repair (Partial Depth)	Sq. Yd.	23.0

*Care should be taken by contractor while working on existing deck not to damage existing conduits per Article 107.39 of the Standard Specifications.

MODEL: \\MODELS\MHFS FILE: \\MHFS_Plan\140143\140143.dwg PROJECT: 0570193\CAD\Drawings\Structures\0570193-14-Structure\0570193-14-Structure.dwg

USER NAME = shererjm	DESIGNED - JMS	REVISED -
	DRAWN - JMS	REVISED -
PLOT SCALE = 40.0000 ' / in.	CHECKED -	REVISED -
PLOT DATE = 5/14/2019	DATE - 020619	REVISED -

STATE OF ILLINOIS
DEPARTMENT OF TRANSPORTATION

GENERAL PLAN AND ELEVATION
S.N. 057-0193

SCALE: 1" = 20' SHEET 1 OF 19 SHEETS STA. TO STA.

F.A.P. RTE.	SECTION	COUNTY	TOTAL SHEETS	SHEET NO.
730	(61Z-11RS-2)	MCLEAN	35	5
CONTRACT NO. 70D47			ILLINOIS FED. AID PROJECT	