

STATE OF ILLINOIS
DEPARTMENT OF TRANSPORTATION

ROUTE	SECTION	COUNTY	TOTAL SHEETS	SHEET NO.
VAR.	ITS D6-3	SANGAMON	15	1
ILLINOIS			CONTRACT NO. 72L05	

FOR INDEX OF SHEETS, SEE SHEET NO. ___

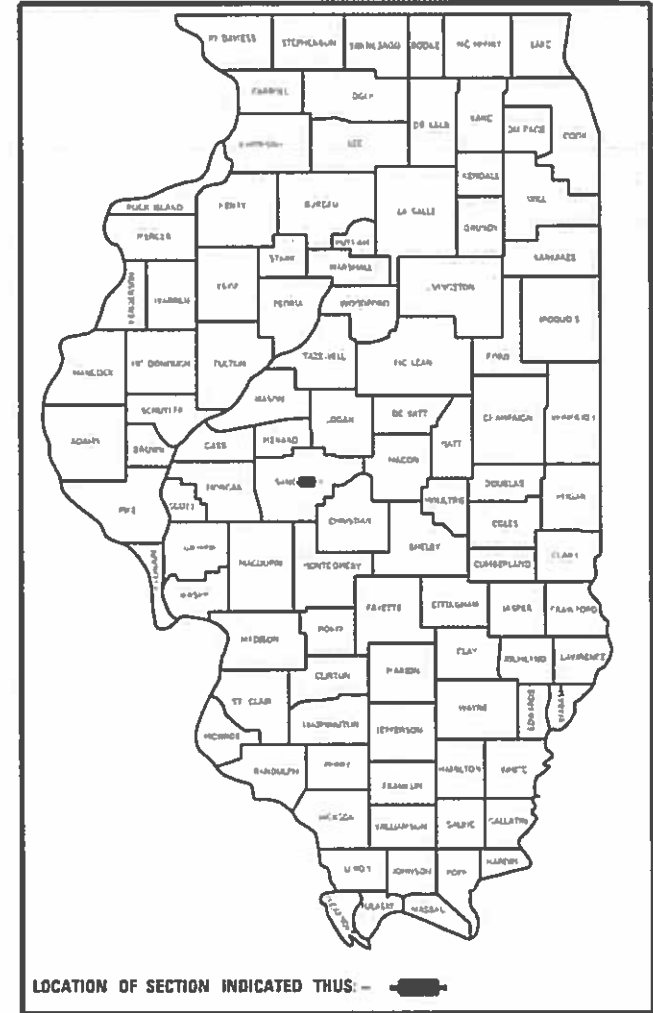
PROPOSED HIGHWAY PLANS

ROUTE VARIOUS
SECTION ITS D6-3

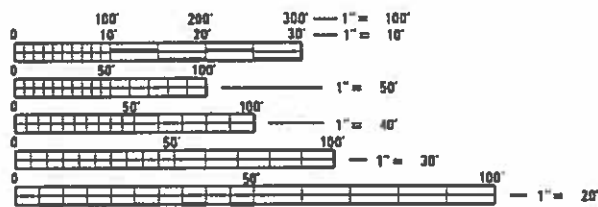
ITS EXPANSION
SANGAMON COUNTY

C-96-035-19

D-96-026-19



ADT = 12,700
SU = 450
MU = 150

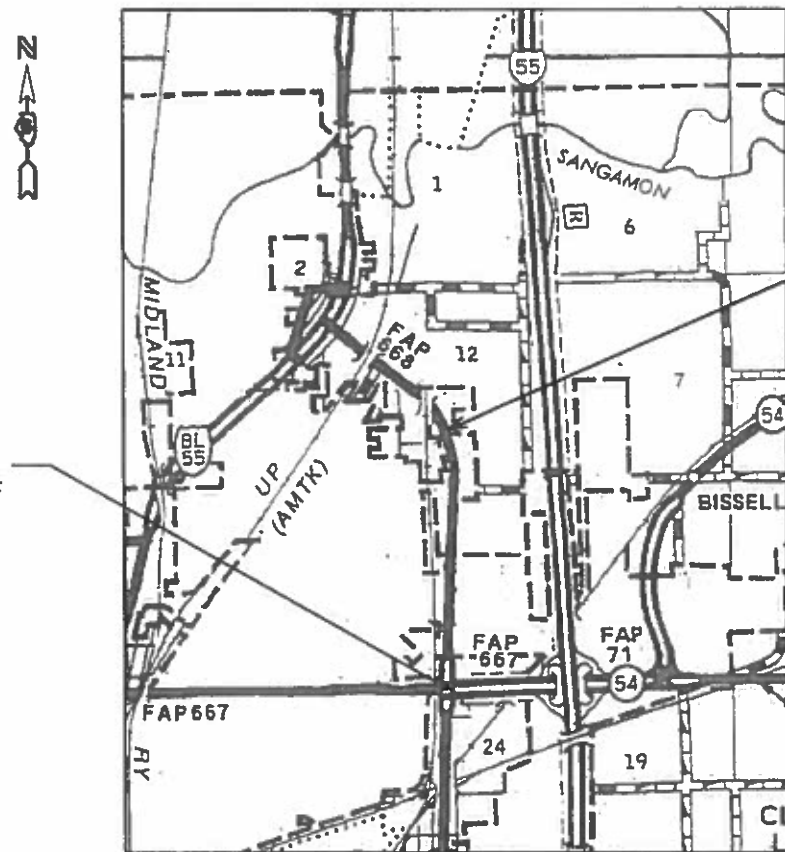


FULL SIZE PLANS HAVE BEEN PREPARED USING STANDARD ENGINEERING SCALES. REDUCED SIZED PLANS WILL NOT CONFORM TO STANDARD SCALES. IN MAKING MEASUREMENTS ON REDUCED PLANS, THE ABOVE SCALES MAY BE USED.

J.U.L.I.E.
JOINT UTILITY LOCATION INFORMATION FOR EXCAVATORS
1-800-892-0123
OR 811

PROJECT ENGINEER: MIKE IRWIN
PROJECT MANAGER: TIM SHARP

CONTRACT NO. 72L05



END PROJECT INTERSECTION OF DIRKSEN AND SANGAMON

BEGIN PROJECT INTERSECTION OF DIRKSEN AND BISSEL

GROSS LENGTH = 5,280.00 FT. = 1.000 MILE
NET LENGTH = 5,280.00 FT. = 1.000 MILE

STATE OF ILLINOIS
DEPARTMENT OF TRANSPORTATION

SUBMITTED 29 March 2019

[Signature] REGIONAL ENGINEER

May 10 2019

[Signature] ENGINEER OF DESIGN AND ENVIRONMENT

May 10 2019

[Signature] DIRECTOR OF HIGHWAYS PROJECT IMPLEMENTATION

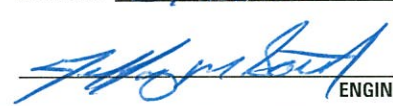


PRINTED BY THE AUTHORITY
OF THE STATE OF ILLINOIS

INDEX OF SHEETS

- 1 COVER SHEET
- 2 INDEX OF SHEETS, GENERAL NOTES,
SIGNATURES, STANDARDS
- 3 SUMMARY OF QUANTITIES
- 4 LEGEND AND NOTES
- 5 LOCATION PLANS
- 6-15 FIBER PLANS

HIGHWAY STANDARDS

- 701101-05 OFF-RD OPERATION, ML, 15' TO 24" FROM PAVEMENT EDGE
- 701601-09 URBAN LANE CLOSURE, MULTILANE, 1W OR 2W WITH NONTRAVERSABLE MEDIAN
- 701602-10 URBAN LANE CLOSURE, MULTILANE, 2W WITH BIDIRECTIONAL LEFT TURN LANE
- 701701-10 URBAN LANE CLOSURE, MULTILANE INTERSECTIONS
- 701801-06 SIDEWALK, CORNER OR CROSSWALK CLOSURE
- 701901-08 TRAFFIC CONTROL DEVICES

STATE OF ILLINOIS DEPARTMENT OF TRANSPORTATION DIVISION OF HIGHWAYS DISTRICT 6	
EXAMINED <u>29 March</u>	20 <u>19</u>
 ENGINEER OF OPERATIONS	
EXAMINED <u>15 March</u>	20 <u>19</u>
 ENGINEER OF PROJECT IMPLEMENTATION	
EXAMINED <u>March 18</u>	20 <u>19</u>
 ENGINEER OF PROGRAM DEVELOPMENT	

MODEL: default
 FILE NAME: S:\CONTRACTS\ITC CAD\72L05 - ITS D6-3 - Sangamon County\jobans72L05-0112\template.dwg

USER NAME = sharptd	DESIGNED -	REVISED -
PLOT SCALE = 2.0000" / in.	DRAWN -	REVISED -
PLOT DATE = 3/12/2019	CHECKED -	REVISED -
	DATE -	REVISED -

**STATE OF ILLINOIS
DEPARTMENT OF TRANSPORTATION**

**INDEX OF SHEETS, GENERAL NOTES,
SIGNATURES**

SCALE: SHEET OF SHEETS STA. TO STA.

F.A. RTE.	SECTION	COUNTY	TOTAL SHEETS	SHEET NO.
VAR.	ITS D6-3	SANGAMON	15	2
CONTRACT NO. 72L05				
ILLINOIS FED. AID PROJECT				

CODE NO.	ITEM	UNIT	TOTAL QUANTITY	FORMAL CONT.
				100% STATE SANGAMON UTILITY 0043 URBAN
67100100	MOBILIZATION	L.SUM	1.0	1.0
70102630	TRAFFIC CONTROL AND PROTECTION, STANDARD 701601	L.SUM	1.0	1.0
70102632	TRAFFIC CONTROL AND PROTECTION, STANDARD 701602	L.SUM	1.0	1.0
70102635	TRAFFIC CONTROL AND PROTECTION, STANDARD 701701	L.SUM	1.0	1.0
70102640	TRAFFIC CONTROL AND PROTECTION, STANDARD 701801	L.SUM	1.0	1.0
87301705	ELECRIC CABLE IN CONDUIT, COMMUNICATION NO. 18 3 PAIR	FOOT	4386.0	4386.0
89502210	MODIFY EXISTING CONTROLLER CABINET	EACH	5.0	5.0
89502300	REMOVE ELECTRIC CABLE FROM CONDUIT	FOOT	4386.0	4386.0
89502375	REMOVE EXISTING TRAFFIC SIGNAL EQUIPMENT	EACH	5.0	5.0
Z0010688	CAMERA MOUNTING ASSEMBLY	EACH	20.0	20.0
Z0033072	VIDEO VEHICLE DETECTION SYSTEM	EACH	5.0	5.00

MODEL: D:\dft\it...
 FILE NAME: S:\CONTRACT\MANT_CAD\72105 - ITS D6-3 - Sangamon County\Urban\72105-rh-3-500.dwg

USER NAME = sharptd	DESIGNED - _____	REVISED - _____
PLOT SCALE = 2.0000' / in.	DRAWN - _____	REVISIED - _____
PLOT DATE = 4/2/2019	CHECKED - _____	REVISIED - _____
	DATE - _____	REVISIED - _____

STATE OF ILLINOIS
DEPARTMENT OF TRANSPORTATION

SUMMARY OF QUANTITIES

SCALE: _____ SHEET ____ OF ____ SHEETS STA. _____ TO STA. _____

F.A. RTE.	SECTION	COUNTY	TOTAL SHEETS	SHEET NO.
VAR.	ITS D6-3	SANGAMON	15	3
			CONTRACT NO. 72L05	
			ILLINOIS FED. AID PROJECT	

GENERAL NOTES

VIDEO VEHICLE DETECTION SYSTEM NOTES

LEGEND

- R REMOVE
- RR REMOVE AND REPLACE
- ☐ EXISTING HANDHOLE
- ☒ EXISTING DOUBLE HANDHOLE
- ⊗ EXISTING CONTROLLER
- ⊠ PROPOSED HANDHOLE
- ⊞ PROPOSED VIDEO VEHICLE DETECTION SYSTEM (V.V.D.S.)
- ⊟ EXISTING GULF BOX JUNCTION
- EXISTING CONDUIT
- PROPOSED CONDUIT

- 1 V.V.D.S. ARE LOCATION SENSITIVE. PROPOSED EQUIPMENT LOCATIONS ARE APPROXIMATE. TO ENSURE THE OPTIMUM FIELD OF VIEW, ACTUAL LOCATIONS SHALL BE DETERMINED IN THE FIELD BY THE CONTRACTOR, PER THE MANUFACTURER REPRESENTATIVES RECOMMENDATIONS AND THE ENGINEERS APPROVAL.
- 2 PLAN ELEVATIONS - U.S.G.S. MEAN SEA LEVEL DATUM.
- 3 ALL ELEVATIONS SHOWN ON THE PLANS ARE ESTABLISHED FROM U.S.G.S. MEAN SEA LEVEL DATUM.
- 4 U-BOLTS SHALL BE PRODUCED FROM ASTM A276, TYPE 304, 304L, 316, CONDITION A, COLD FINISH, OR AN EQUIVALENT MATERIAL ACCEPTABLE TO THE ENGINEER. ALL NUTS SHALL BE STAINLESS STEEL CONFORMING TO ASTM A194, GRADE 8 (AISI TYPE 304) OR GRADE 8F (AISI TYPE 303), THE NUTS SHALL BE LOCKNUTS WITH NYLON OR STEEL INSERTS AND SEMI FINISHED HEXAGONAL HEADS EQUIVALENT TO THE FINISHED HEX SERIES OF THE AMERICAN NATIONAL STANDARD. ALL WASHERS SHALL BE STAINLESS STEEL CONFORMING TO ASTM 240, TYPE 302 OR 304.
- 5 ALL BOLTS, SCREWS, NUTS AND WASHERS SHALL BE STAINLESS STEEL. ANTI-SEIZE PASTE COMPOUND SHALL BE USED ON ALL MOUNTING HARDWARE FIELD CONNECTIONS. ALL CCTV MOUNTING METHODS AND MOUNTING MATERIAL SHALL BE PRE-APPROVED BY THE ENGINEER.
- 6 UNDERGROUND CABLE MARKING TAPE SHALL BE INSTALLED WITH ALL TRENCH & BACKFILL FOR ELECTRICAL WORK IN ACCORDANCE WITH ARTICLES 815.03 (c) & 1066.05 OF THE STANDARD SPECIFICATIONS.
- 7 A 1/4" DIA. NYLON ROPE SHALL BE INSTALLED IN ALL CONDUIT RUNS. THE COST OF PULL ROPE SHALL BE INCLUDED IN THE PROPOSED ELECTRIC CABLE INSTALLATION IN THAT CONDUIT.
- 8 THE CONTRACTOR SHALL NOT DRILL ANY HOLES IN THE BEAMS, DECK, OR SUBSTRUCTURE OF THE BRIDGE, UNLESS OTHERWISE APPROVED BY THE ENGINEER.
- 9 THE LOCATION OF EXISTING WATER MAINS, GAS MAINS, SEWERS, ELECTRIC POWER LINES, TELEPHONE LINES AND OTHER UTILITIES AS SHOWN ON THE PLANS ARE BASED ON CAREFUL FIELD INVESTIGATION AND THE BEST INFORMATION AVAILABLE, BUT THEY ARE NOT GUARANTEED. IT SHALL BE THE CONTRACTOR'S RESPONSIBILITY TO ASCERTAIN THEIR EXACT LOCATION FROM THE UTILITY COMPANIES AND BY FIELD INSPECTION.
- 10 ALL UTILITIES SHALL BE LOCATED IN FIELD PRIOR TO ANY ATTEMPT TO CONSTRUCT ANY COMPONENT OF THE VARIOUS CCTV CAMERA SYSTEM. ILLINOIS STATE LAW REQUIRES A 48-HOUR NOTICE BE GIVEN TO UTILITIES BEFORE DIGGING. FIELD MARKING OF FACILITIES MAY BE OBTAINED BY PROVIDING A MINIMUM OF 96-HOURS ADVANCE NOTICE TO THE RESIDENT ENGINEER SO THAT THE UTILITY COMPANIES CAN BE NOTIFIED.
- 11 COORDINATION WITH THE DEPARTMENTS BUREAU OF OPERATIONS IS REQUIRED BEFORE ANY TRENCHING SHALL BE DONE TO LOCATE HIGHWAY LIGHTING/PUMP STATION FACILITIES. PH: (217)558-6523 OR (217)524-9161.
- 12 THE AREAS THAT ARE DISTURBED DUE TO THE DIGGING OR TRENCHING SHALL BE COMPLETED ON A WEEKLY BASIS USING SEEDING, CLASS 2 AND MULCH METHOD 1 AND SHALL CONFORM TO THE REQUIREMENTS OF SECTION 251 OF THE STANDARD SPECIFICATIONS EXCEPT THAT NO EMULSIFIED ASPHALT SHALL BE USED. THE COST SHALL BE INCIDENTAL TO THE CONTRACT.
- 13 THE CONTRACTOR MUST COORDINATE AND COOPERATE WITH THE DEPARTMENT AND THE INVOLVED PARTIES AS DIRECTED BY THE DEPARTMENT
- 14 EXISTING CONDUIT AND PULL POINT LOCATIONS TAKEN FROM HISTORICAL DATA. CONTRACTOR SHALL FIELD VERIFY EXISTING CONDUIT SIZES AND LOCATIONS PRIOR TO INSTALLING PROPOSED FIBER OPTIC CABLE WITHIN EXISTING CONDUIT.
- 15 BENDING RADIUS OF FIBER OPTIC CABLE SHALL NOT EXCEED SIX (6) INCHES.
- 16 EXACT FIELD LOCATIONS OF ITS EQUIPMENT SHALL BE AS DIRECTED BY THE ENGINEER. THE CONTRACTOR SHALL TAKE CARE NOT TO INSTALL ITS EQUIPMENT IN DRAINAGE AREAS.
- 17 THE CONTRACTOR SHALL SUBMIT SHOP DRAWINGS, CONSTRUCTION METHODOLOGIES, PRODUCT MANUFACTURER SPECIFICATIONS, OWNERS MANUALS, AND USER MANUALS BEFORE PROCURING AND INSTALLING ANY ITS EQUIPMENT AS PART OF THIS CONTRACT. ALL PROPOSED ITS WORK SHALL BE REVIEWED AND APPROVED BY THE DEPARTMENT.
- 18 THE CONTRACTOR SHALL BE RESPONSIBLE FOR COORDINATING TRAFFIC CONTROL FOR THE INSTALLATION OF ITS RELATED EQUIPMENT WITH OTHER CONTRACTS AND WORK IN THE AREA.

1. REMOVE EXISTING TRAFFIC SIGNAL EQUIPMENT VIDEO DETECTOR CAMERAS MOUNTING BRACKETS CABLES
2. INFORMATION SHOWN ON EXISTING TRAFFIC SIGNAL PLANS ARE BASED OFF OF HISTORICAL PLANS AND SHALL BE CONSIDERED FOR INFORMATION PURPOSES ONLY.
3. ALL REMOVAL OF TRAFFIC SIGNAL EQUIPMENT SHALL BECOME PROPERTY OF I.D.O.T. 06 OPERATIONS AND DELIVERED TO 650 NORTH LINCOLN AVE. BUILDING E. SPRINGFIELD IL. PHONE: (217)5588-6718
4. THE EXISTING VIDEO DETECTOR SYSTEM SHALL REMAIN IN OPERATION UNTIL THE NEW SYSTEM IS INSTALLED AND OPERATIONAL.

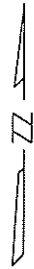
STATE OF ILLINOIS
DEPARTMENT OF TRANSPORTATION

LEGEND AND NOTES

F.A. RTE.	SECTION	COUNTY	TOTAL SHEETS	SHEET NO.
VAR.	ITS D6-3	SANGAMON	15	4
			CONTRACT NO. 72L05	

SCALE _____ SHEET ___ OF ___ SHEETS STA. _____ TO STA. _____

ILLINOIS FED. AID PROJECT



LOCATION #1

LOCATION #2

LOCATION #3

LOCATION #4

LOCATION #5

MODEL Default: \\fs1\GIS\COMMITMENT\2019\05_ITS_D6-3_Sangamon_Contract\plans\BUDS_ITS_5_location.dwg

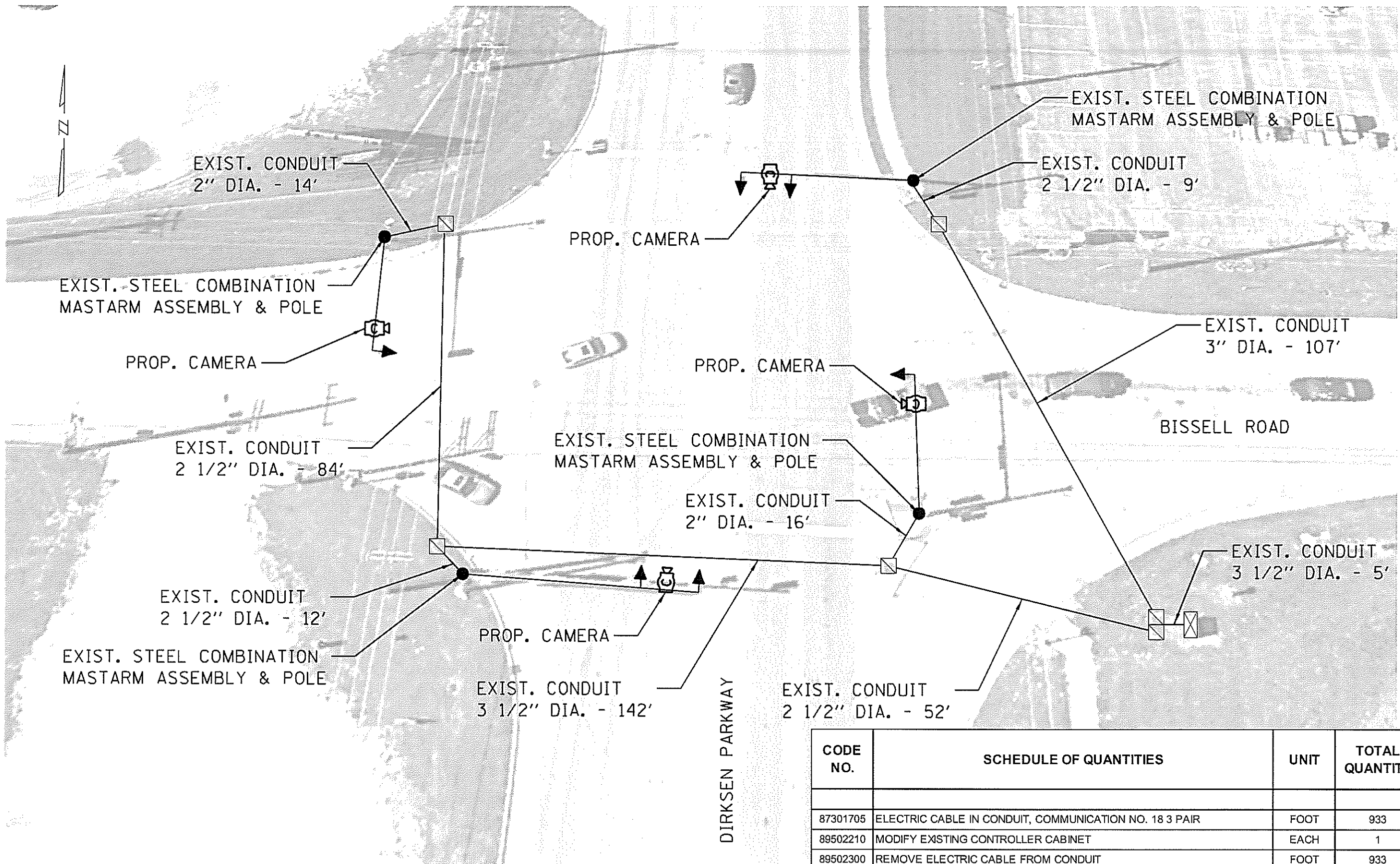
USER NAME = sharptd	DESIGNED - _____	REVISED - _____
	DRAWN - _____	REVISED - _____
PLOT SCALE = 2 0000 / 1" = 1'	CHECKED - _____	REVISED - _____
PLOT DATE = 3/26/2019	DATE - _____	REVISED - _____

**STATE OF ILLINOIS
DEPARTMENT OF TRANSPORTATION**

LOCATION MAP

SCALE _____ SHEET _____ OF _____ SHEETS STA _____ TO STA _____

F.A. RTE.	SECTION	COUNTY	TOTAL SHEETS	SHEET NO.
VAR.	ITS D6-3	SANGAMON	15	5
CONTRACT NO. 72L05				
ILLINOIS FED. AID PROJECT				



NOTE:
SEE SHEET 4 FOR VIDEO VEHICLE
DETECTION SYSTEM NOTES.

CODE NO.	SCHEDULE OF QUANTITIES	UNIT	TOTAL QUANTITY
87301705	ELECTRIC CABLE IN CONDUIT, COMMUNICATION NO. 18 3 PAIR	FOOT	933
89502210	MODIFY EXISTING CONTROLLER CABINET	EACH	1
89502300	REMOVE ELECTRIC CABLE FROM CONDUIT	FOOT	933
89502375	REMOVE EXISTING TRAFFIC SIGNAL EQUIPMENT	EACH	1
Z0010688	CAMERA MOUNTING ASSEMBLY	EACH	4
Z0033072	VIDEO VEHICLE DETECTION SYSTEM	EACH	1

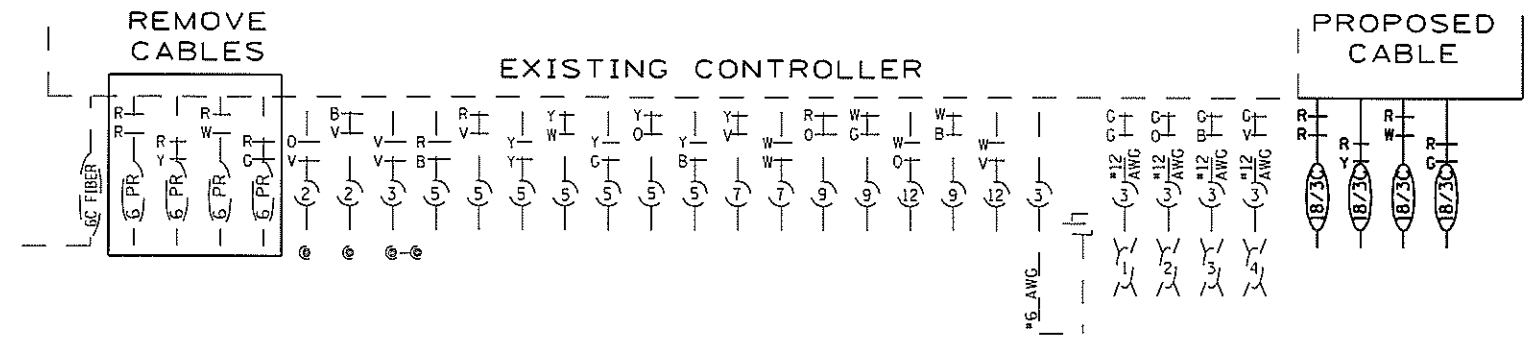
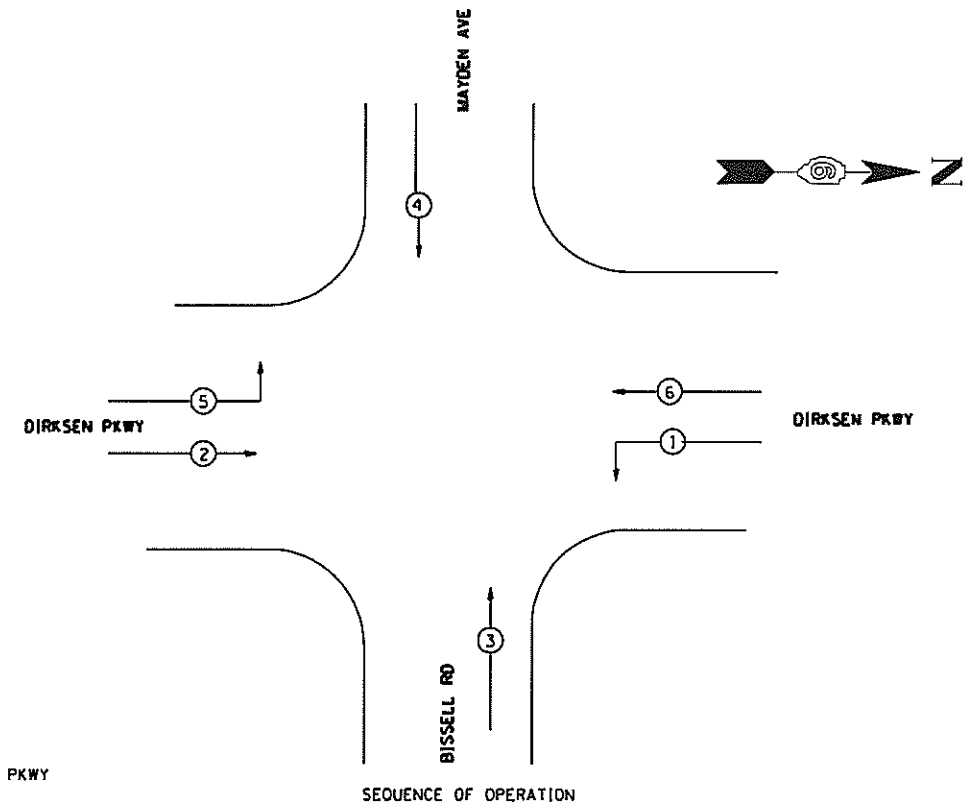
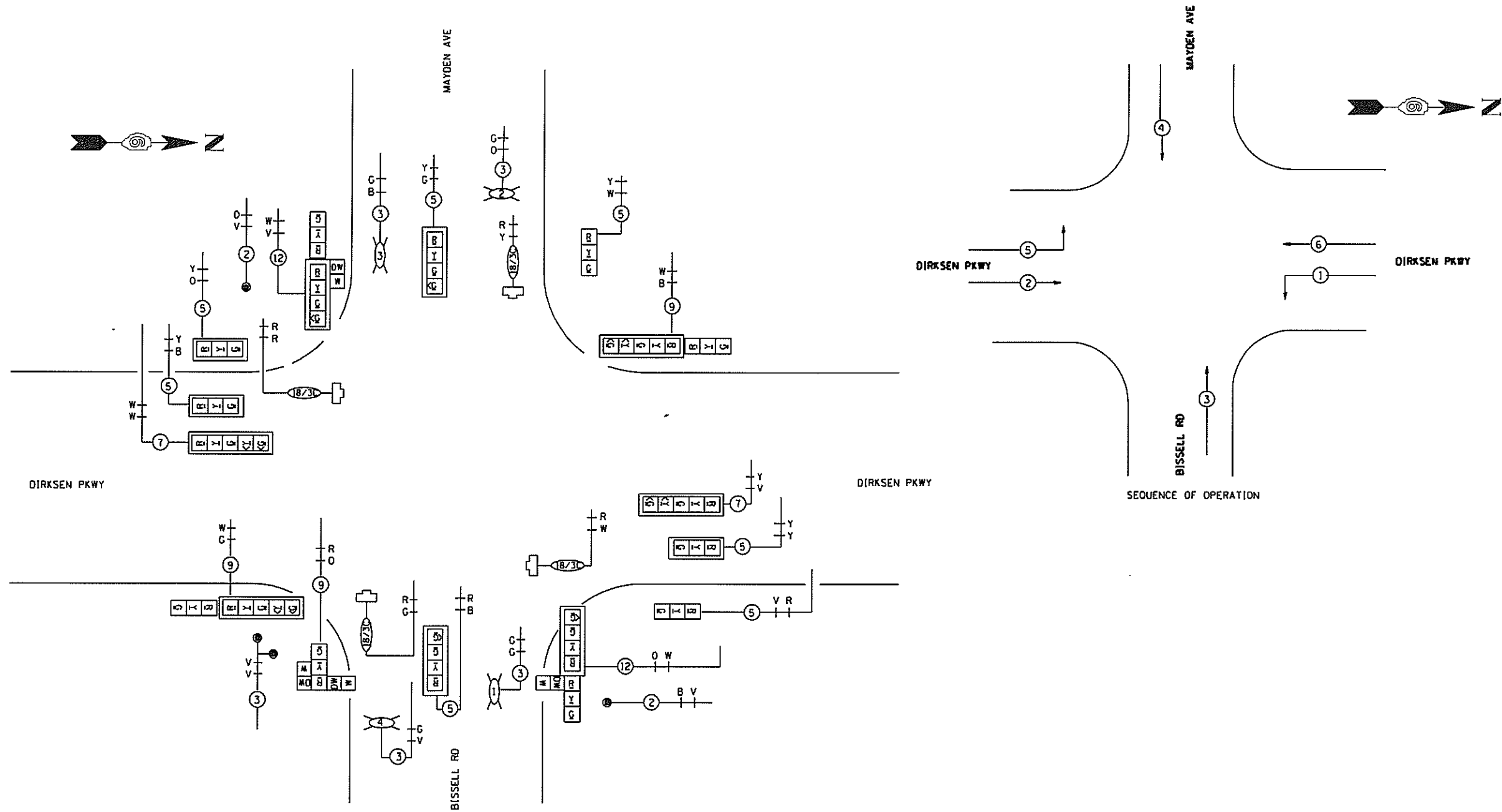
NGOEL, D:\shripd... FILE NAME: S:\COMPHARIT 64072105... ITS D6-3 - Sangamon Count... 7295... shi... 6... d... .dgn

USER NAME = shripd	DESIGNED - _____	REVISED - _____
	DRAWN - _____	REVISED - _____
PLOT SCALE = 2 9000' / in	CHECKED - _____	REVISED - _____
PLOT DATE = 3/26/2019	DATE - _____	REVISED - _____

STATE OF ILLINOIS
DEPARTMENT OF TRANSPORTATION

LOCATION 1 PLAN
DIRKSEN PARKWAY AND BISSEL DRIVE
SCALE _____ SHEET _____ OF _____ SHEETS STA _____ TO STA _____

F.A. RTE.	SECTION	COUNTY	TOTAL SHEETS	SHEET NO.
VAR.	ITS D6-3	SANGAMON	15	6
			CONTRACT NO. 72L05	
ILLINOIS FED. AID PROJECT				



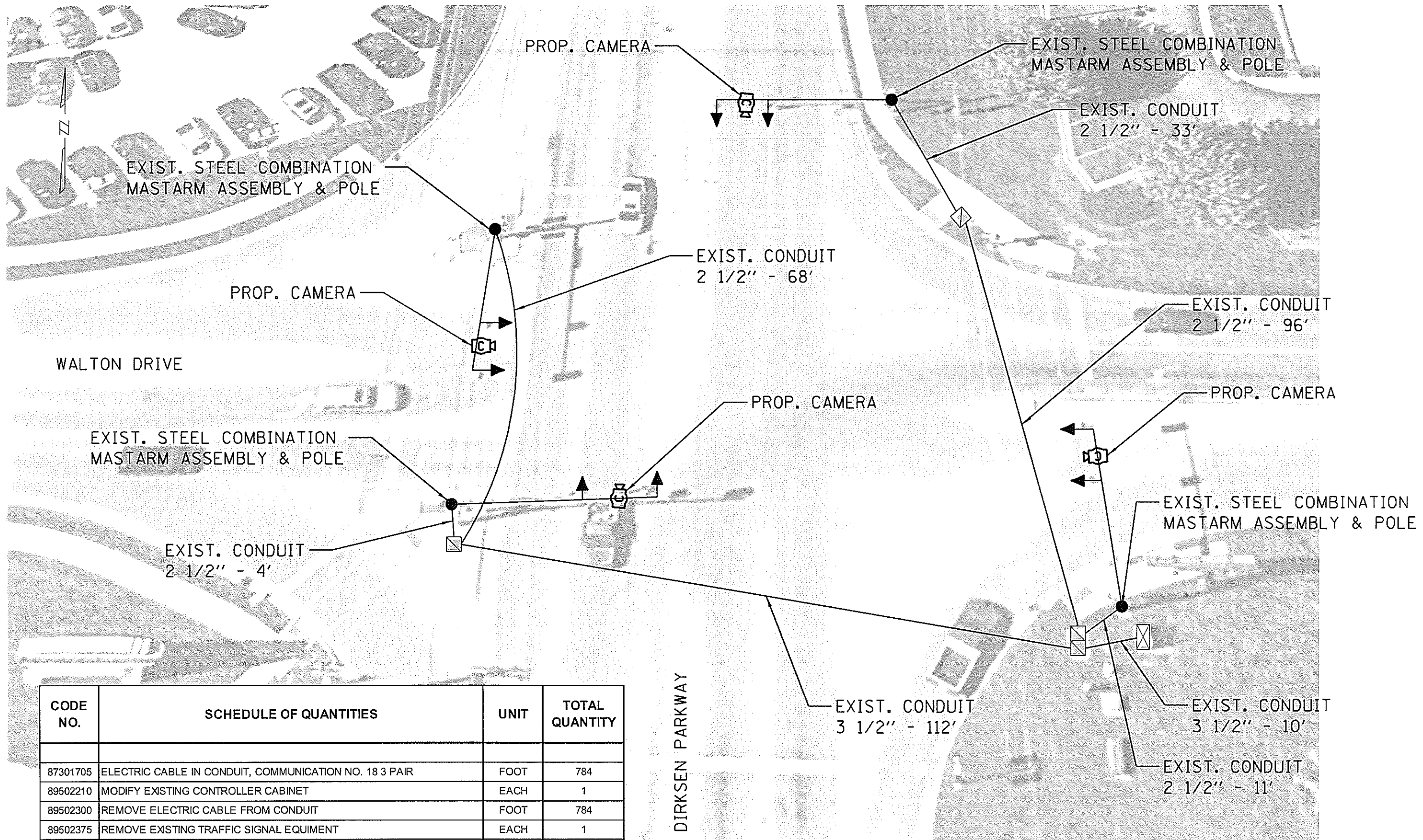
MODEL: Plotout
 FILE NAME: S:\CHITMAN\11_17_15_15_15_15_Sangamon_Corridor\pkas12205_01_6_nhans.dwg

USER NAME = sharpsta	DESIGNED - _____	REVISED - _____
PLOT SCALE = 2 0000' = 1"	DRAWN - _____	REVISED - _____
PLOT DATE = 3/12/2019	CHECKED - _____	REVISED - _____
	DATE - _____	REVISED - _____

STATE OF ILLINOIS
DEPARTMENT OF TRANSPORTATION

LOCATION 1 SCHEMATIC			
DIRKSEN PARKWAY AND BISSELL DRIVE			
SCALE _____	SHEET _____	OF _____ SHEETS	STA _____ TO STA _____

F.A. RTE.	SECTION	COUNTY	TOTAL SHEETS	SHEET NO.
VAR.	ITS D6-3	SANGAMON	16	7
CONTRACT NO. 72L05				
ILLINOIS FED. AID PROJECT				



NOTE:
SEE SHEET 4 FOR VIDEO VEHICLE
DETECTION SYSTEM NOTES.

CODE NO.	SCHEDULE OF QUANTITIES	UNIT	TOTAL QUANTITY
87301705	ELECTRIC CABLE IN CONDUIT, COMMUNICATION NO. 18 3 PAIR	FOOT	784
89502210	MODIFY EXISTING CONTROLLER CABINET	EACH	1
89502300	REMOVE ELECTRIC CABLE FROM CONDUIT	FOOT	784
89502375	REMOVE EXISTING TRAFFIC SIGNAL EQUIPMENT	EACH	1
Z0010688	CAMERA MOUNTING ASSEMBLY	EACH	4
Z0033072	VIDEO VEHICLE DETECTION SYSTEM	EACH	1

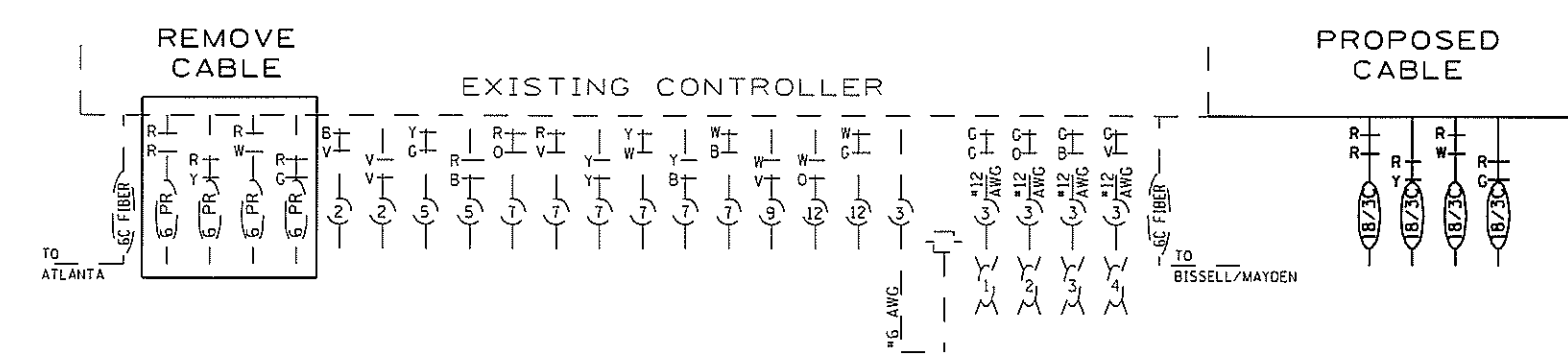
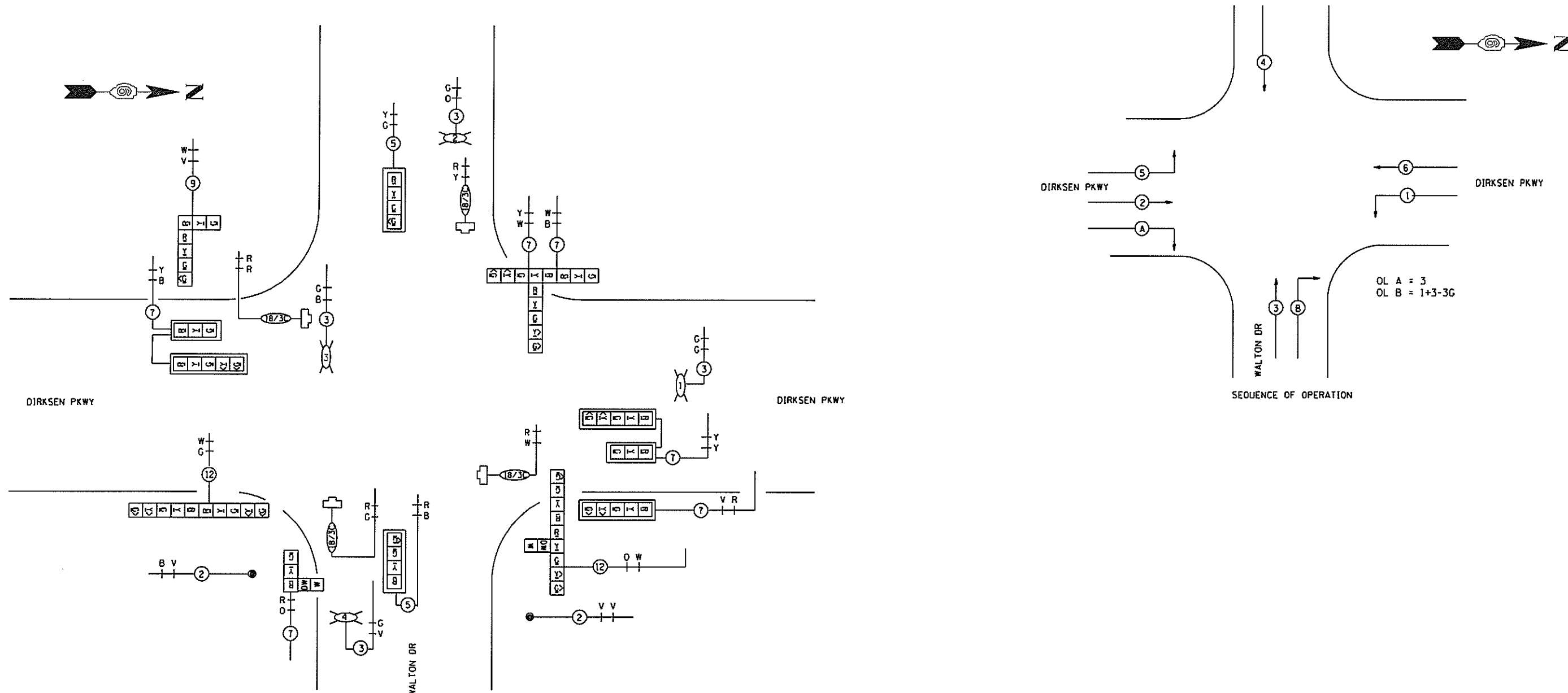
MODEL: Tdrcbit
 FILE NAME: S:\CD\11818181\11818181.dwg
 USER: sharpita
 DESIGNED: _____
 DRAWN: _____
 CHECKED: _____
 DATE: _____
 REVISED: _____
 REVISED: _____
 REVISED: _____
 REVISED: _____

STATE OF ILLINOIS
DEPARTMENT OF TRANSPORTATION

LOCATION 2 PLAN
DIRKSEN PARKWAY AND WALTON DRIVE

F.A. RTE.	SECTION	COUNTY	TOTAL SHEETS	SHEET NO.
VAR.	ITS D6-3	SANGAMON	15	8
			CONTRACT NO. 72L05	
ILLINOIS FED. AID PROJECT				

SCALE _____ SHEET _____ OF _____ SHEETS STA. _____ TO STA. _____



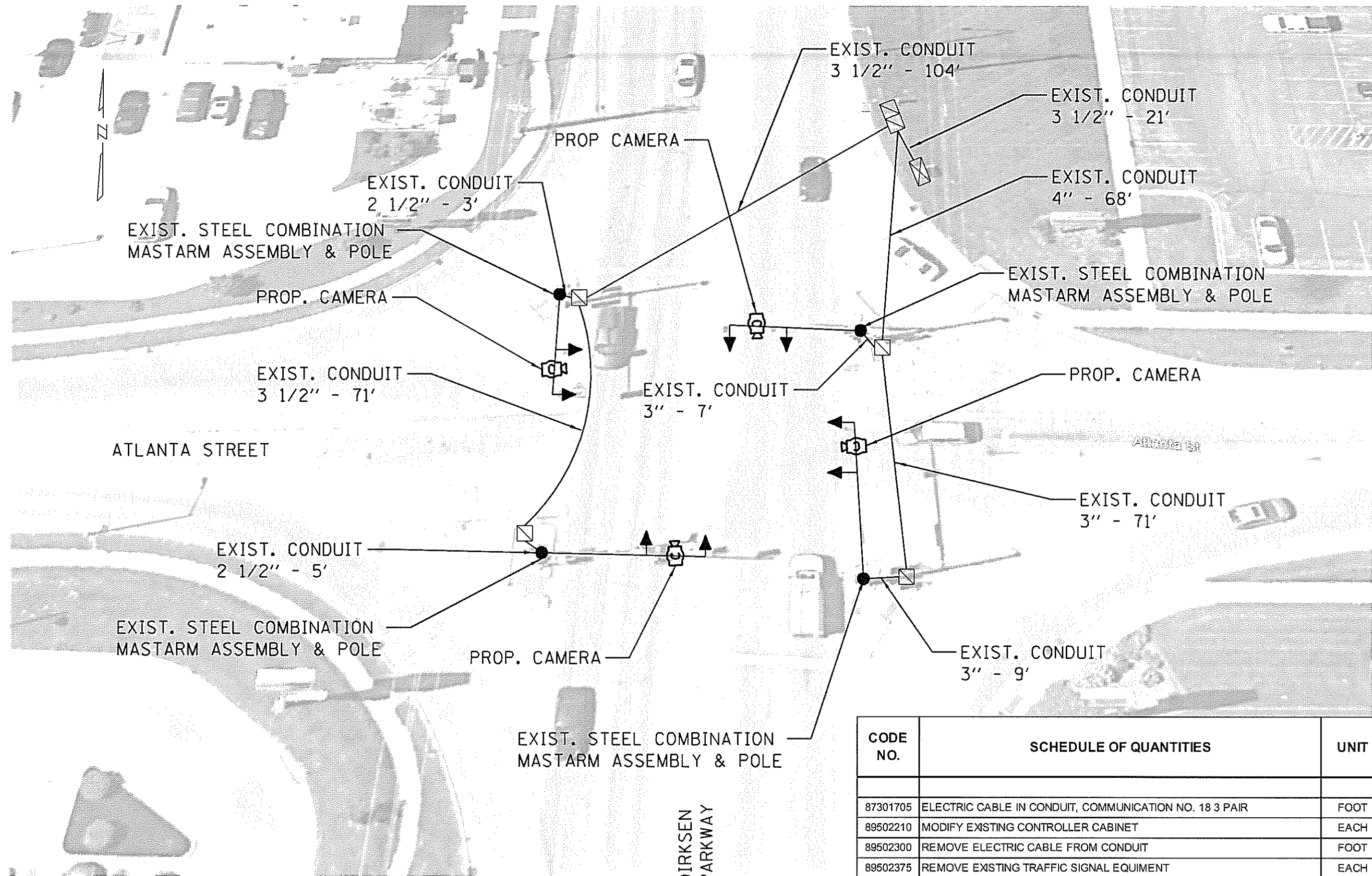
P:\schem\1\sharptd\FILE NAME: S:\CD\DIRKSEN.DWG - ITS D6-3 - Sangamon County\sharptd\2205_dir_6.dwg, dwg

USER NAME = sharptd	DESIGNED -	REVISED -
PLOT SCALE = 2 0000 1/4 in.	DRAWN -	REVISED -
PLOT DATE = 3/12/2019	CHECKED -	REVISED -
	DATE -	REVISED -

STATE OF ILLINOIS
DEPARTMENT OF TRANSPORTATION

LOCATION 2 SCHEMATIC DIRKSEN PARKWAY AND WALTON DRIVE	
SCALE _____	SHEET _____ OF _____ SHEETS STA _____ TO STA _____

F.A. RTE.	SECTION	COUNTY	TOTAL SHEETS	SHEET NO.
VAR.	ITS D6-3	SANGAMON	15	9
CONTRACT NO. 72L05				
ILLINOIS FED. AID PROJECT				



NOTE:
SEE SHEET 4 FOR VIDEO VEHICLE
DETECTION SYSTEM NOTES.

CODE NO.	SCHEDULE OF QUANTITIES	UNIT	TOTAL QUANTITY
87301705	ELECTRIC CABLE IN CONDUIT, COMMUNICATION NO. 18 3 PAIR	FOOT	915
89502210	MODIFY EXISTING CONTROLLER CABINET	EACH	1
89502300	REMOVE ELECTRIC CABLE FROM CONDUIT	FOOT	915
89502375	REMOVE EXISTING TRAFFIC SIGNAL EQUIPMENT	EACH	1
Z0010688	CAMERA MOUNTING ASSEMBLY	EACH	4
Z0033072	VIDEO VEHICLE DETECTION SYSTEM	EACH	1

MODEL: D:\proj\11\11-01\11-01.dwg
 FILE NAME: S:\CONTRACTS\11\11-01\11-01.dwg
 USER: shripd
 DATE: 3/26/2019

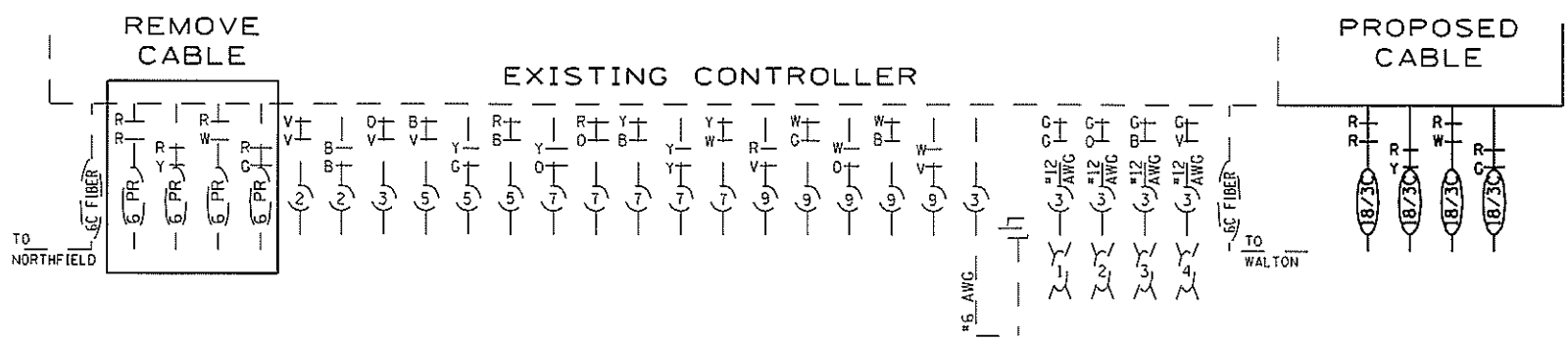
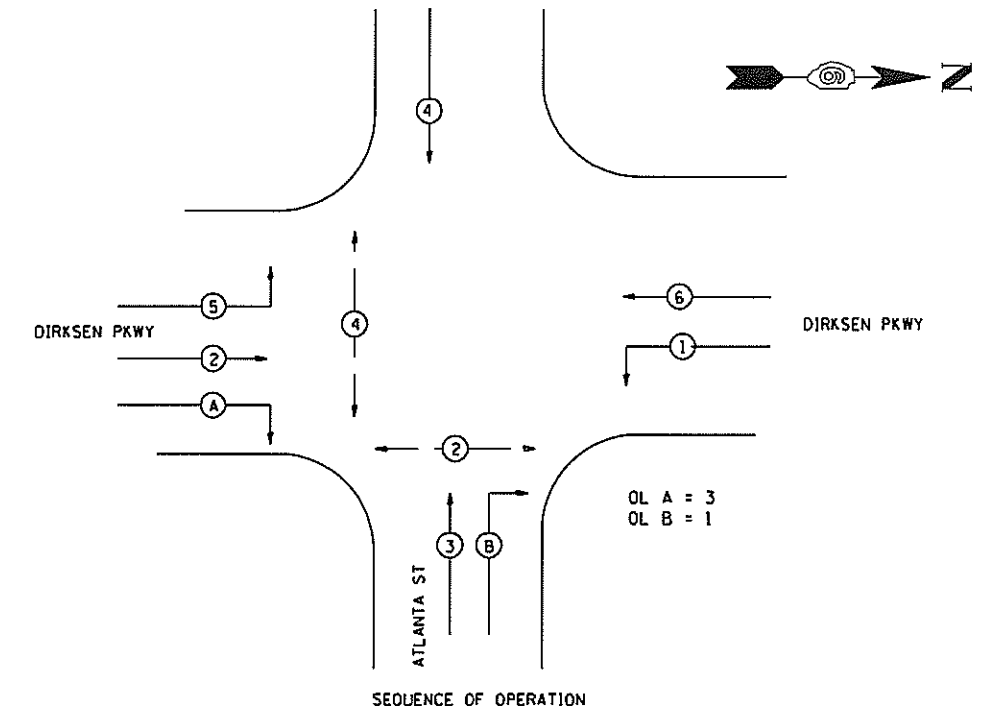
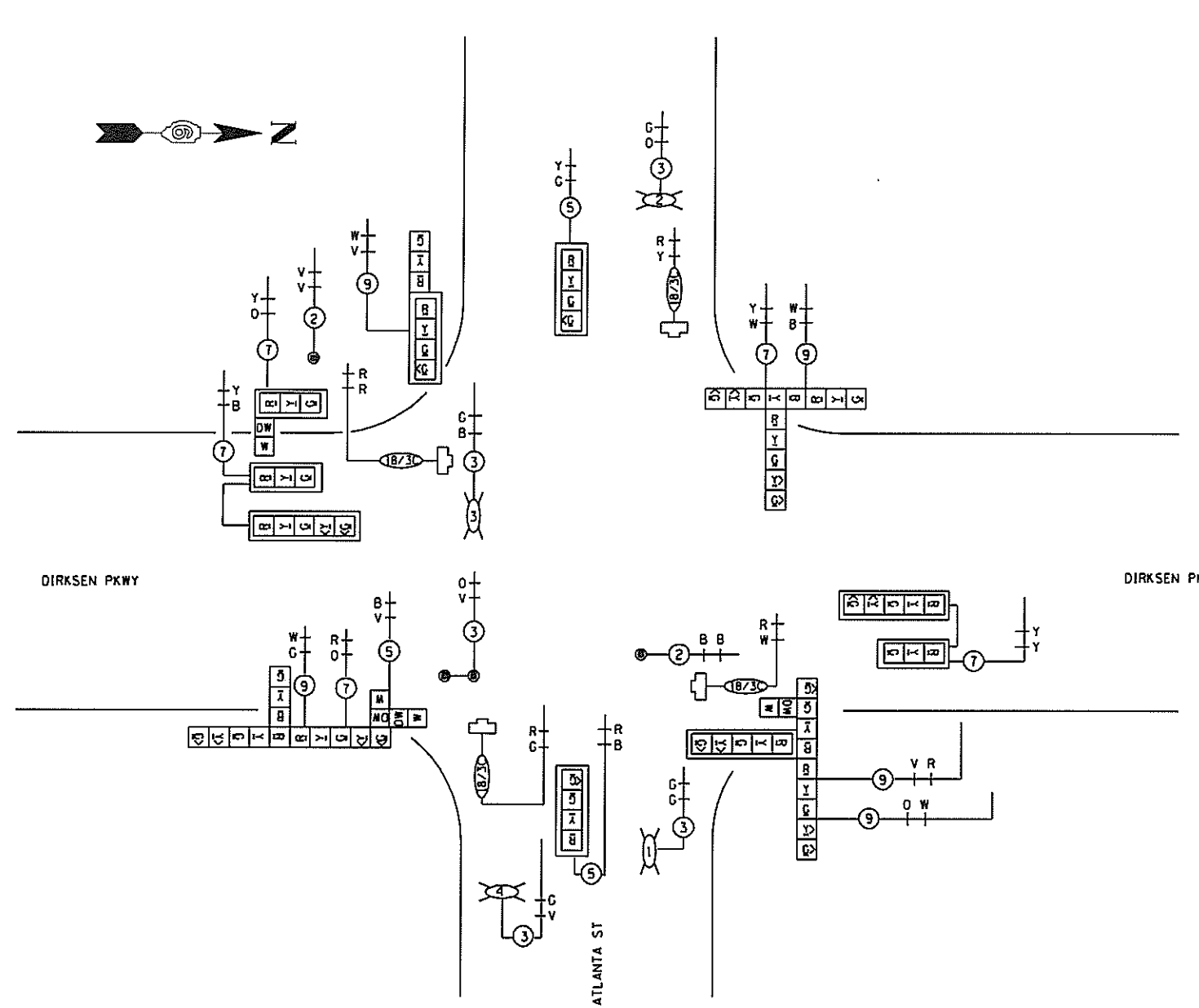
USER NAME = shripd	DESIGNED - _____	REVISED - _____
PLOT SCALE = 2 0000 / 1 in	DRAWN - _____	REVISED - _____
PLOT DATE = 3/26/2019	CHECKED - _____	REVISED - _____
	DATE - _____	REVISED - _____

STATE OF ILLINOIS
DEPARTMENT OF TRANSPORTATION

LOCATION 3 PLAN
DIRKSEN PARKWAY AND ATLANTA STREET

F.A. RTE.	SECTION	COUNTY	TOTAL SHEETS	SHEET NO.
VAR.	ITS D6-3	SANGAMON	15	10
			CONTRACT NO. 72L05	
ILLINOIS FED. AID PROJECT				

SCALE _____ SHEET ___ OF ___ SHEETS STA _____ TO STA _____



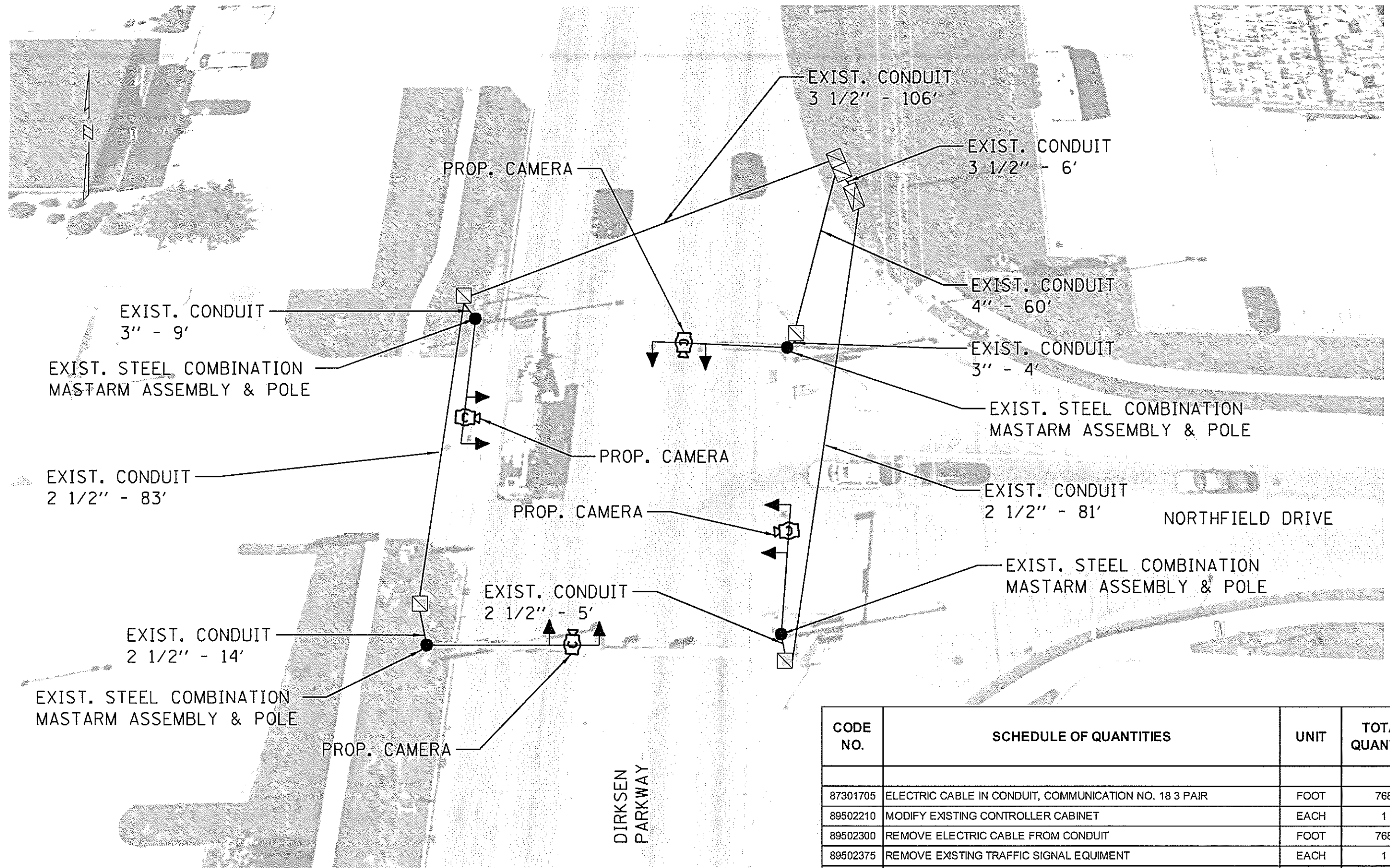
I:\SHEL -\work\proj\5.0\CONTRACT\AUT C&D\212105 - ITS D6-3 - Sangamon County\shaptd\212105-111-6.dwg: dlm
 FILE NAME: 5.0\CONTRACT\AUT C&D\212105 - ITS D6-3 - Sangamon County\shaptd\212105-111-6.dwg: dlm

USER NAME = shaptd	DESIGNED -	REVISED -
PLOT SCALE = 2 0000 / in.	DRAWN -	REVISED -
PLOT DATE = 3/12/2019	CHECKED -	REVISED -
	DATE -	REVISED -

STATE OF ILLINOIS
DEPARTMENT OF TRANSPORTATION

LOCATION 3 SCHEMATIC DIRKSEN PARKWAY AND ATLANTA STREET	
SCALE _____	SHEET _____ OF _____ SHEETS
STA _____	TO STA _____

F.A. RTE.	SECTION	COUNTY	TOTAL SHEETS	SHEET NO.
VAR.	ITS D6-3	SANGAMON	15	11
CONTRACT NO. 72L05				
ILLINOIS FED. AID PROJECT				



NOTE:
SEE SHEET 4 FOR VIDEO VEHICLE
DETECTION SYSTEM NOTES.

CODE NO.	SCHEDULE OF QUANTITIES	UNIT	TOTAL QUANTITY
87301705	ELECTRIC CABLE IN CONDUIT, COMMUNICATION NO. 18 3 PAIR	FOOT	768
89502210	MODIFY EXISTING CONTROLLER CABINET	EACH	1
89502300	REMOVE ELECTRIC CABLE FROM CONDUIT	FOOT	768
89502375	REMOVE EXISTING TRAFFIC SIGNAL EQUIPMENT	EACH	1
Z0010688	CAMERA MOUNTING ASSEMBLY	EACH	4
Z0033072	VIDEO VEHICLE DETECTION SYSTEM	EACH	1

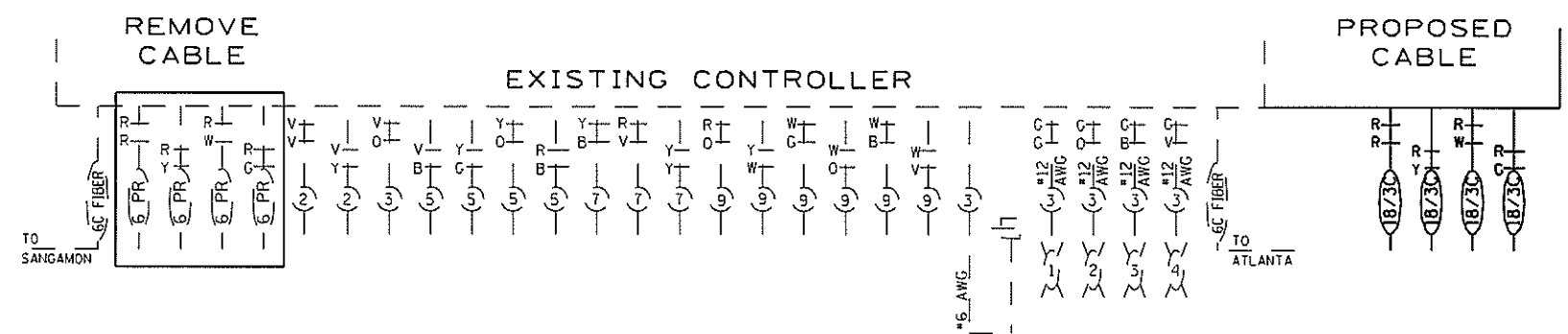
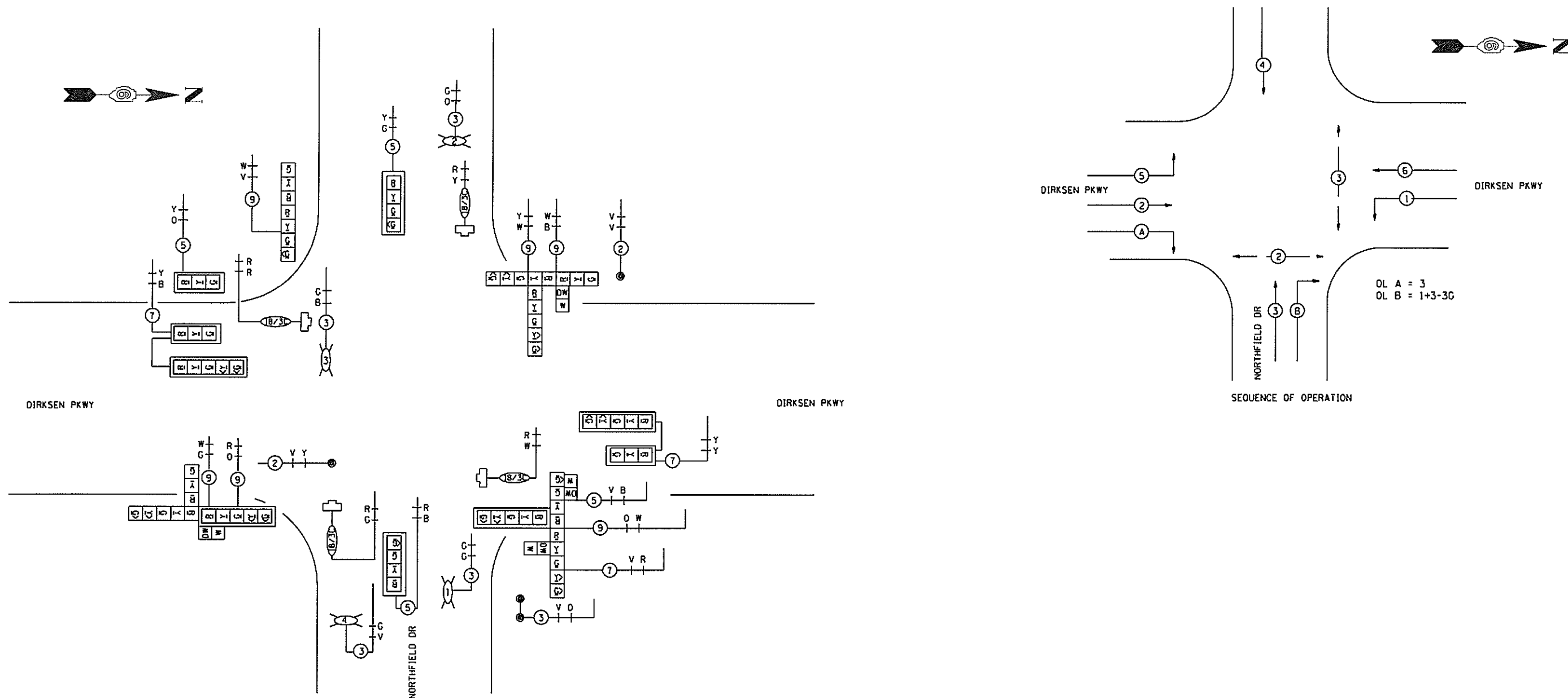
MZHEL: ksharpt
 FILE NAME: S:\COURT\BART 64972105 - ITS, FIG. 3 - Sangamon Court\idwv37205_d11_6_p000.dwg

USER NAME = sharptd	DESIGNED - _____	REVISED - _____
	DRAWN - _____	REVISED - _____
PLOT SCALE = 2' 000" / in	CHECKED - _____	REVISED - _____
PLOT DATE = 3/26/2019	DATE - _____	REVISED - _____

STATE OF ILLINOIS
DEPARTMENT OF TRANSPORTATION

LOCATION 4 PLAN
DIRKSEN PARKWAY AND NORTHFIELD DRIVE
SCALE _____ SHEET _____ OF _____ SHEETS STA _____ TO STA _____

F.A. RTE.	SECTION	COUNTY	TOTAL SHEETS	SHEET NO.
VAR.	ITS D6-3	SANGAMON	15	12
			CONTRACT NO. 72L05	
ILLINOIS FED. AID PROJECT				



MODEL: Idriscan
 FILE NAME: S:\COMPRM\AITE_C\DIR2105_ITS_D6-3_Sangamon_Contract\dir2105_101_6.dwg
 DATE: 3/12/2019

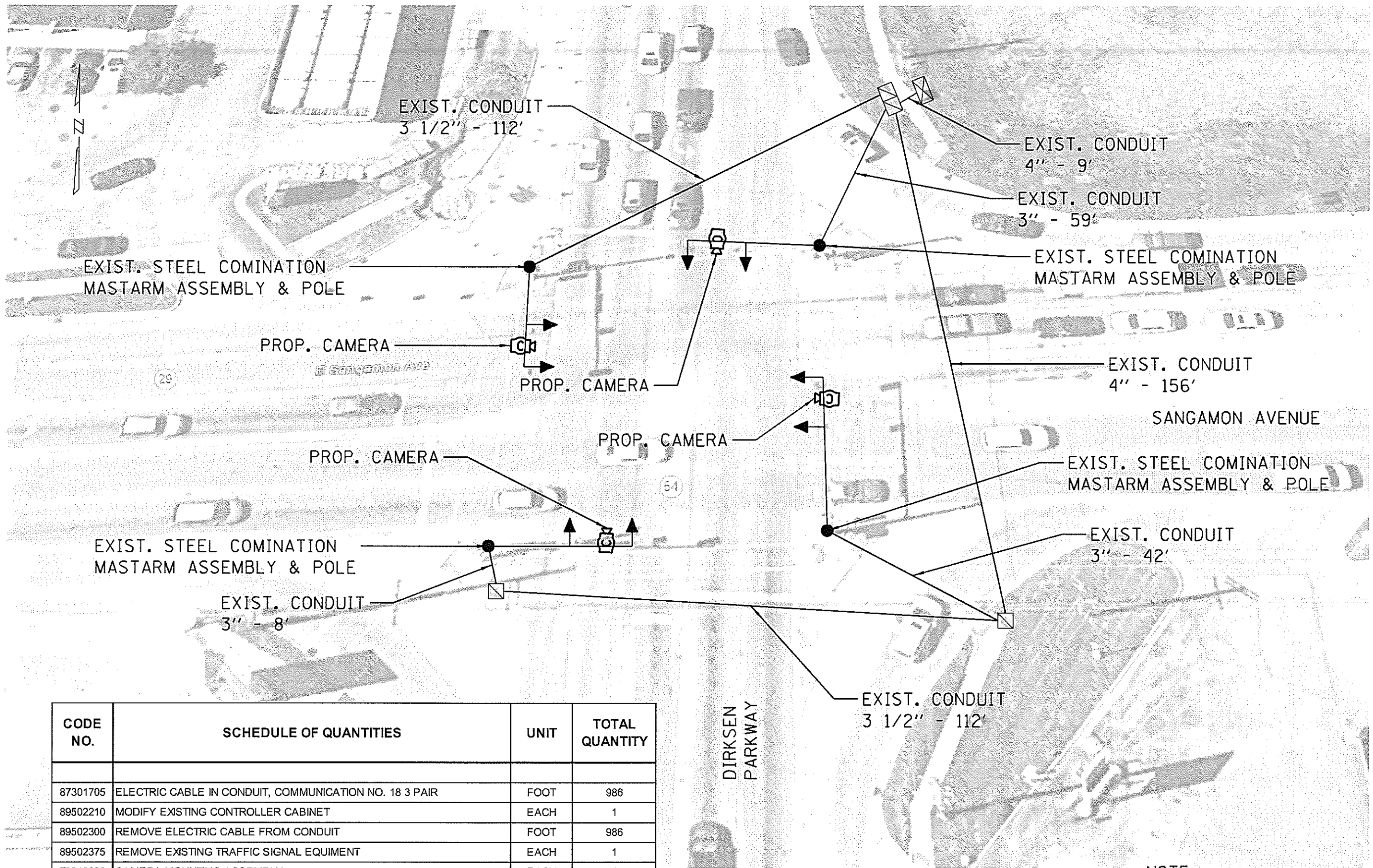
USER NAME = shaptd	DESIGNED -	REVISED -
PLOT SCALE = 2:0000	DRAWN -	REVISED -
PLOT DATE = 3/12/2019	CHECKED -	REVISED -
	DATE -	REVISED -

STATE OF ILLINOIS
DEPARTMENT OF TRANSPORTATION

LOCATION 4 SCHEMATIC
DIRKSEN PARKWAY AND NORTHFIELD DRIVE

SCALE: _____ SHEET ___ OF ___ SHEETS | STA. _____ TO STA. _____

F.A. RTE.	SECTION	COUNTY	TOTAL SHEETS	SHEET NO.
VAR.	ITS D6-3	SANGAMON	15	13
CONTRACT NO. 72L05				
ILLINOIS FED. AID PROJECT				



CODE NO.	SCHEDULE OF QUANTITIES	UNIT	TOTAL QUANTITY
87301705	ELECTRIC CABLE IN CONDUIT, COMMUNICATION NO. 18 3 PAIR	FOOT	986
89502210	MODIFY EXISTING CONTROLLER CABINET	EACH	1
89502300	REMOVE ELECTRIC CABLE FROM CONDUIT	FOOT	986
89502375	REMOVE EXISTING TRAFFIC SIGNAL EQUIPMENT	EACH	1
Z0010688	CAMERA MOUNTING ASSEMBLY	EACH	4
Z0033072	VIDEO VEHICLE DETECTION SYSTEM	EACH	1

NOTE:
SEE SHEET 4 FOR VIDEO VEHICLE
DETECTION SYSTEM NOTES.

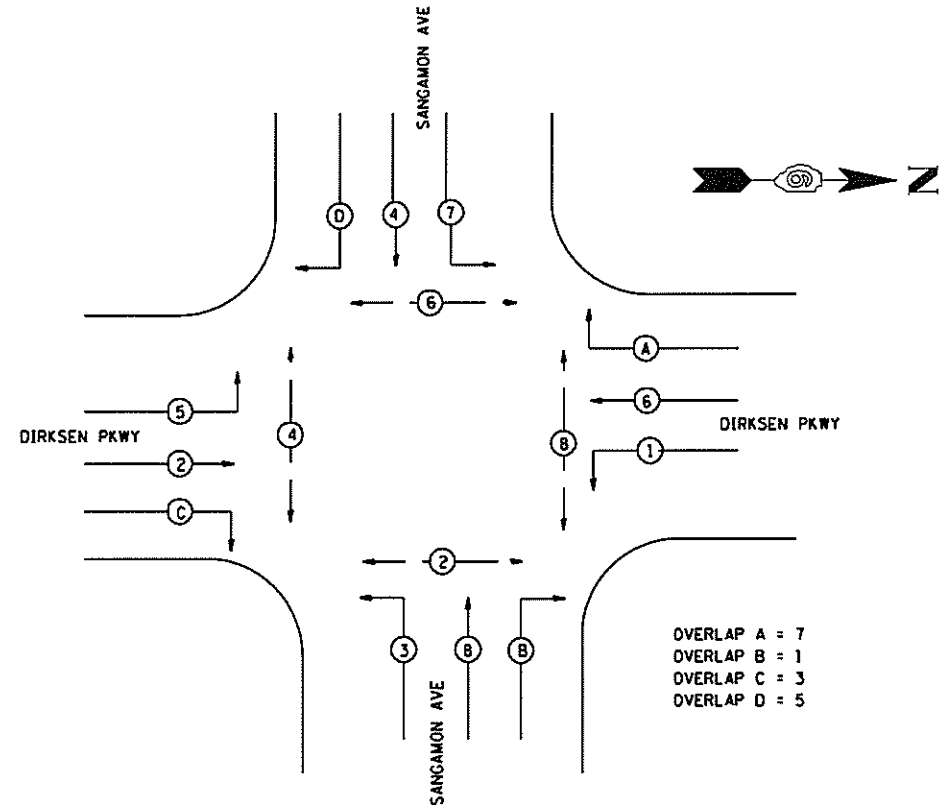
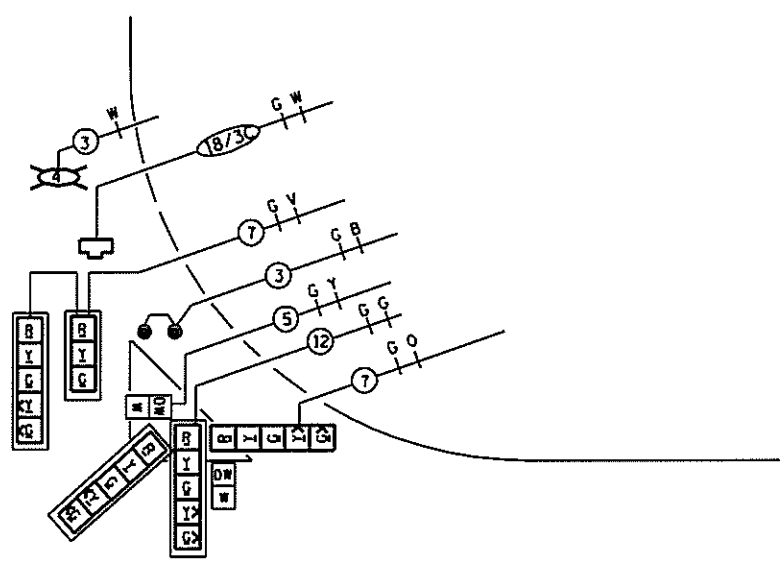
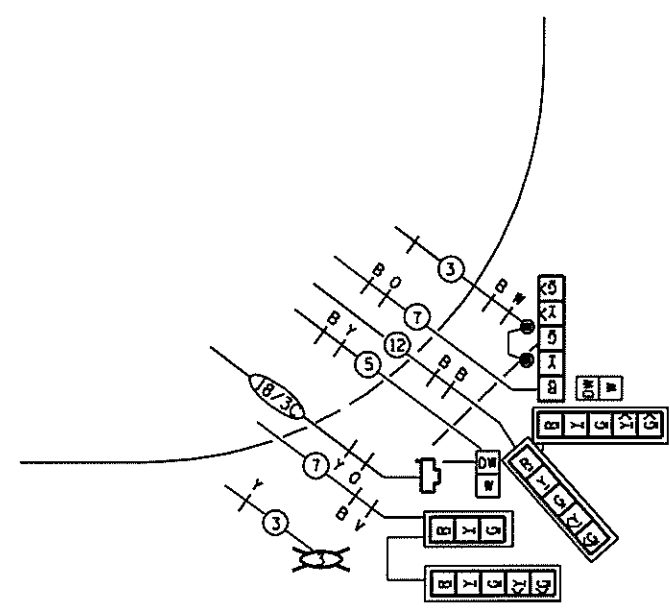
MODEL: D:\air\...
 FILE NAME: S:\COURT\...
 ITS DF: 3 - Sangamon Court Address\2205_sht 6.plans.dwg

USER NAME = shartd	DESIGNED - _____	REVISED - _____
PLOT SCALE = 2 9000 / in	DRAWN - _____	REVISED - _____
PLOT DATE = 3/26/2019	CHECKED - _____	REVISED - _____
	DATE - _____	REVISED - _____

STATE OF ILLINOIS
DEPARTMENT OF TRANSPORTATION

LOCATION 5 PLAN
DIRKSEN PARKWAY AND SANGAMON AVENUE
SCALE _____ SHEET _____ OF _____ SHEETS STA. _____ TO STA. _____

F.A. RTE.	SECTION	COUNTY	TOTAL SHEETS	SHEET NO.
VAR.	ITS D6-3	SANGAMON	15	14
CONTRACT NO. 72L05				
[ILLINOIS] FED. AID PROJECT				

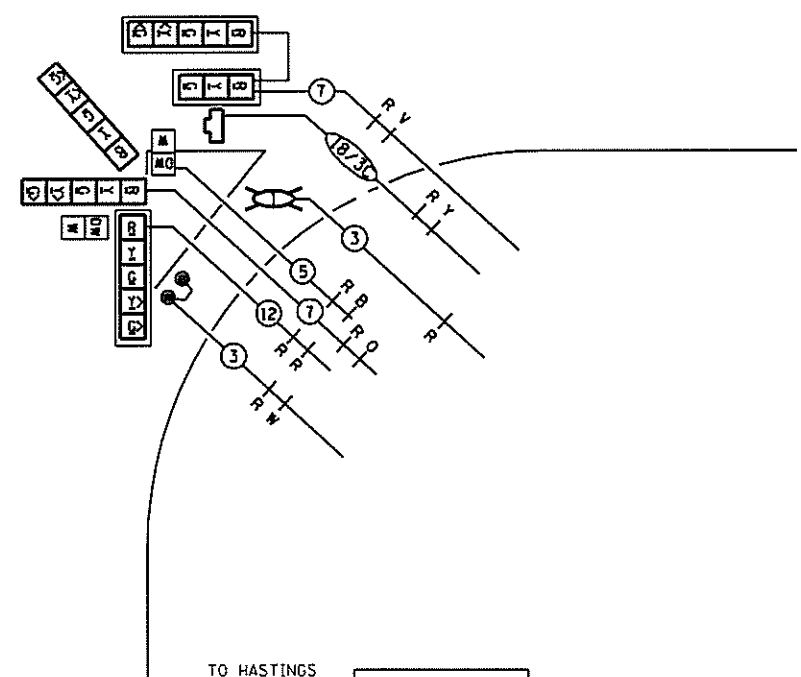
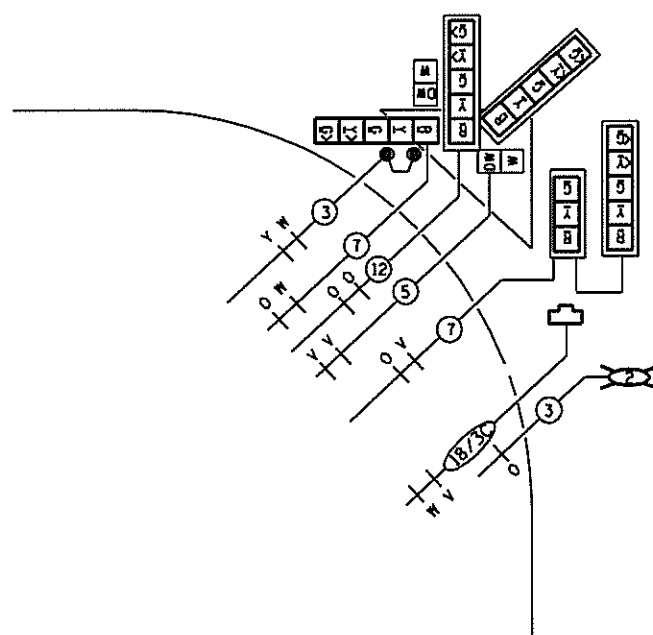


OVERLAP A = 7
 OVERLAP B = 1
 OVERLAP C = 3
 OVERLAP D = 5

SEQUENCE OF OPERATION

DIRKSEN PKWY

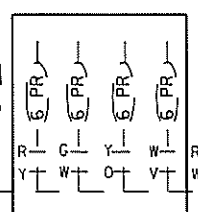
DIRKSEN PKWY



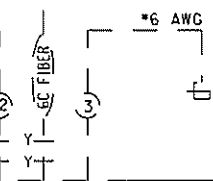
SANGAMON AVE

TO HASTINGS

TO NORTHFIELD



EXISTING CONTROLLER



PROPOSED CABLE

STATE OF ILLINOIS
 DEPARTMENT OF TRANSPORTATION

LOCATION 5 SCHEMATIC
 DIRKSEN PARKWAY AND SANGAMON AVENUE

F.A. RTE.	SECTION	COUNTY	TOTAL SHEETS	SHEET NO.
VAR.	ITS D6-3	SANGAMON	15	15
			CONTRACT NO. 72L05	

MODEL: Encadr; FILE NAME: S:\COMTECH\ITC\2105 - Sangamon Court\rdm\2105_01_6.plans.dwg

USER NAME	= shaptd
PLOT SCALE	= 2 9000 / in
PLOT DATE	= 3/26/2019

DESIGNED	-	REVISED	-
DRAWN	-	REVISED	-
CHECKED	-	REVISED	-
DATE	-	REVISED	-

SCALE _____ SHEET _____ OF _____ SHEETS STA. _____ TO STA. _____

ILLINOIS FED AID PROJECT