

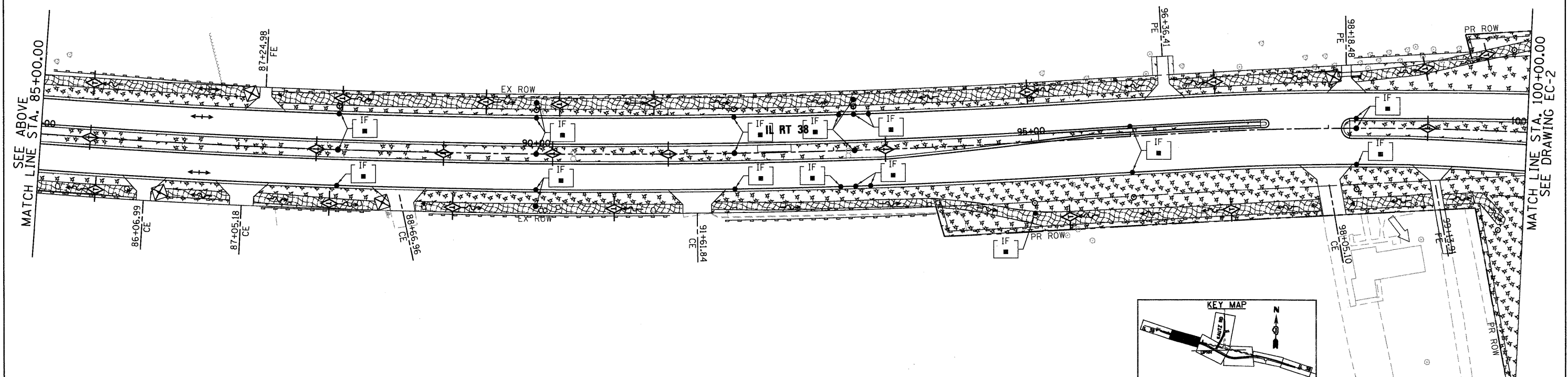
EROSION CONTROL LEGEND

- INLET AND PIPE PROTECTION
- TEMPORARY DITCH CHECK
- PERIMETER EROSION BARRIER
- TEMPORARY EROSION CONTROL SEEDING AND MULCH METHOD 2
- TEMPORARY EROSION CONTROL SEEDING AND EROSION CONTROL BLANKET
- INLET FILTER
- EROSION CONTROL TEMPORARY PIPE SLOPE DETAIL
- SEDIMENT TRAP
- DITCH FLOW
- SWALE
- DRAINAGE SUMMIT

BEGIN IMPROVEMENT
STA 80+81.77
MATCH EXISTING

NOTES:

- "SEDIMENT TRAP" SHALL BE SIZED FOR 1/2 ACRE STORAGE. SEE DETAIL SHEET ED-1 FOR DETAILS.
- PERIMETER EROSION BARRIER HAS BEEN OFFSET FOR CLARITY.



McDonough Associates Inc.
Engineers / Architects
130 East Randolph Street, Chicago, Illinois 60601

FILE NAME = D:\68122-SHT-EROS11.dgn	USER NAME = YK1m	DESIGNED - JCL	REVISED -
		DRAWN - JCL	REVISED -
		CHECKED - EJC	REVISED -
		DATE - 10/14/11	REVISED -

**STATE OF ILLINOIS
DEPARTMENT OF TRANSPORTATION**

EROSION AND SEDIMENT CONTROL PLAN	
SCALE: 1"=50'	SHEET NO. 1 OF 5 SHEETS
STA. BEGIN	TO STA. 100+00

F.A.P. RTE.	SECTION	COUNTY	TOTAL SHEETS	SHEET NO.
347	LY (HB & VB)	DUPAGE/KANE	421	61
EC-1		CONTRACT NO. 60122		
FED. ROAD DIST. NO. 1 [ILLINOIS] FED. AID PROJECT				