

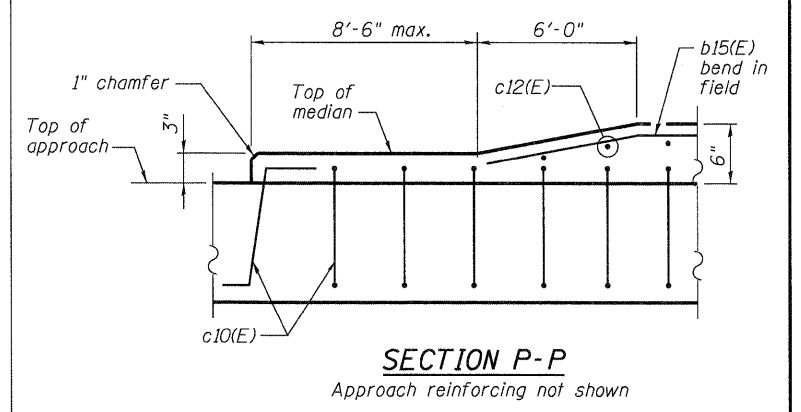
PLAN - NORTH APPROACH SLAB - NE

Note:
 Stations and offsets are relative to Kautz Rd.

Notes:
 See Detail A on Sheet 24 of 67.
 Approach slab and parapet concrete shall be paid for as Concrete Superstructure.
 Approach footing concrete shall be paid for as Concrete Structures.
 Reinforcement shall be paid for as Reinforcement Bars, Epoxy Coated.
 The approach footing maximum applied service bearing pressure (Q_{max}) = 2.0 ksf.
 For bar splicer details, see sheet 60 of 67.
 Cost of excavation for approach footing included with Concrete Structures.
 For Select Fill see MSE Wall Details on Sheet 47 of 67.
 See Sheet 24 of 67 for sections and Bill of Material.
 Bars indicated thus 20 x 3-#5 etc. indicates 20 lines of bars with 3 lengths per line.

MINIMUM LAP

- #4 = 2'-7"
 - #5 = 3'-3"
 - #9 = 8'-7"
- * Tilt #9 b11(E) bars as required to maintain clearance.
 ** Cut to fit skew and use remainder of bars in other side as indicated.



SECTION P-P
 Approach reinforcing not shown

FILE NAME =	USER NAME = jehrhert	DESIGNED - RJ	REVISED -
0450079-60122-023-Appr.Slab.N2.dgn		CHECKED - GEK	REVISED -
		DRAWN - RJ	REVISED -
		CHECKED - GEK	REVISED -

PLOT SCALE = 1:8	DRAWN - RJ	REVISED -
PLOT DATE = 3/28/2012	CHECKED - GEK	REVISED -

STATE OF ILLINOIS
 DEPARTMENT OF TRANSPORTATION

NORTH APPROACH SLAB - 2
 STRUCTURE NO. 045-0079
 SHEET NO. 23 OF 67 SHEETS

F.A.P. RTE.	SECTION	COUNTY	TOTAL SHEETS	SHEET NO.
347	LY (HB & VB)	DUPAGE/KANE	421	189
CONTRACT NO. 60122			ILLINOIS FED. AID PROJECT	