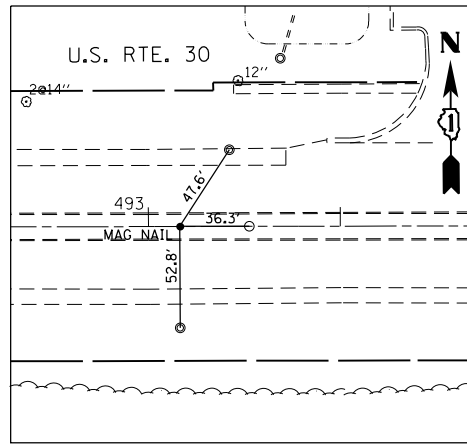
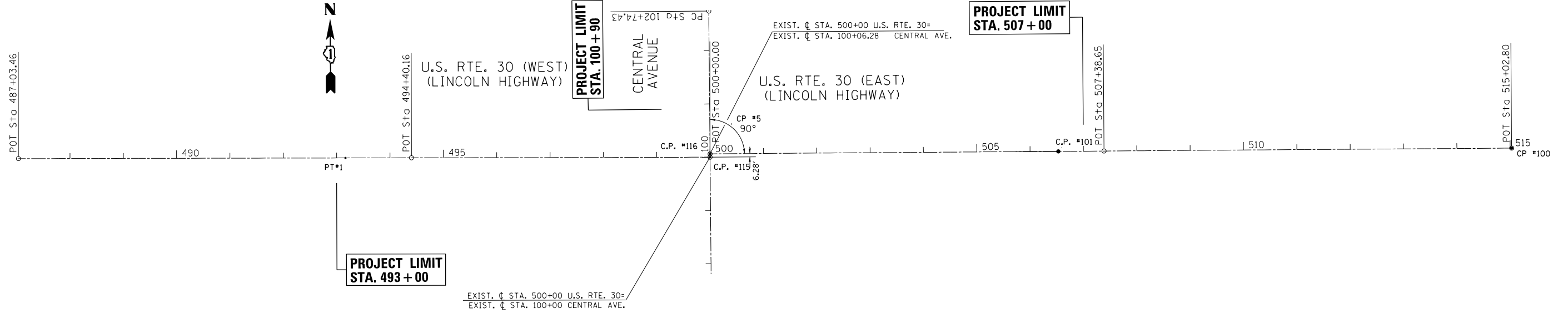


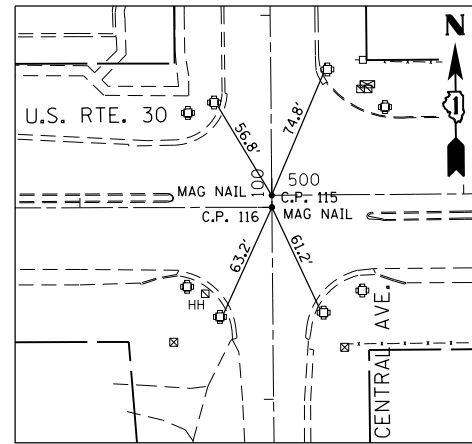
ALIGNMENT COORDINATES - U.S. RTE. 30 (WEST)			
U.S. 30	STATION	N	E
POB	487+03.46	1763165.9016	1142279.4995
POT	500+00.00	1763168.6350	1143576.0381

ALIGNMENT COORDINATES - U.S. RTE. 30 (EAST)			
U.S. 30	STATION	N	E
POB	500+00.00	1763174.9150	1143575.9824
POT	507+38.65	1763180.2017	1144314.6154
POT	515+02.80	1763185.6708	1145078.7441



**CONTROL POINT #1**

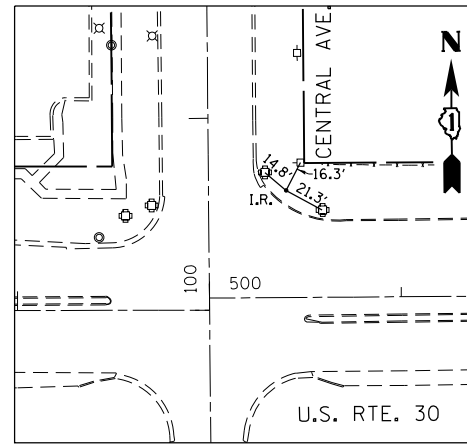
MAGNETIC NAIL IN MEDIAN  
 493+16.29, 0' RT.  
 N 1763167.1936  
 E 1142892.3318  
 ELEV. 711.515



**CONTROL POINT #115 AND #116**

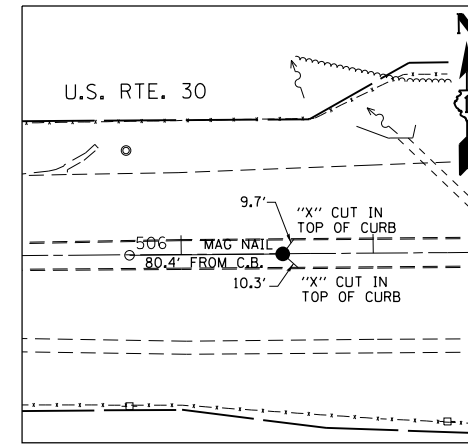
115  
 MAGNETIC NAIL IN PAVEMENT  
 STATION 500+00, 0' RT.  
 N 1763174.9150  
 E 1143575.9824  
 ELEV. 711.186

116  
 MAGNETIC NAIL IN PAVEMENT  
 STATION 500+00, 0' RT.  
 N 1763168.6350  
 E 1143576.0381  
 ELEV. 711.240



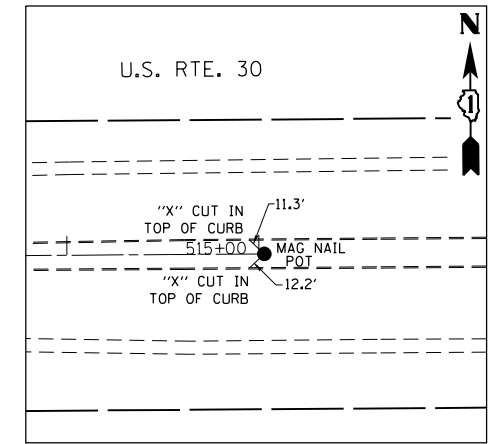
**CONTROL POINT #5**

SET IRON ROD  
 STATION 500+40.63, 55.66' LT.  
 N 1763230.8634  
 E 1143616.2113  
 ELEV. 710.427



**CONTROL POINT #101**

MAGNETIC NAIL IN MEDIAN  
 506+52.93, 0' RT.  
 N 1763179.5781  
 E 1144228.8958  
 ELEV. 710.477



**CONTROL POINT #100**

MAGNETIC NAIL IN MEDIAN  
 515+02.80, 0' RT.  
 N 1763185.6708  
 E 1145078.7441  
 ELEV. 714.448

**BENCHMARK #10**

ELEV. 710.962  
 "x" CUT IN CONCRETE SLAB OF TURN  
 SIGNAL CONTROL BOX AT NORTHEAST  
 CORNER ROUTE 30 & CENTRAL AVE.

**BENCHMARK #15**

ELEV. 710.908  
 "x" CUT IN CONCRETE BASE OF  
 MAST ARM AT NORTHWEST CORNER  
 OF ROUTE 30 AND CENTRAL AVE.

FILE NAME =	USER NAME = midyja	DESIGNED -	REVISED -
et:\pw\work\p1\midyja\dms92832\p156888-sht-ATB.dgn		DRAWN -	REVISED -
		CHECKED -	REVISED -
		DATE -	REVISED -

STATE OF ILLINOIS  
 DEPARTMENT OF TRANSPORTATION

ALIGNMENTS, TIES AND BENCHMARKS			
U.S. RTE. 30 (LINCOLN HIGHWAY) AT CENTRAL AVENUE			
SCALE: 1"=100'	SHEET	OF SHEETS	STA. TO STA.

F.A.P. RTE.	SECTION	COUNTY	TOTAL SHEETS	SHEET NO.
353	23-N-4	COOK	68	13
CONTRACT NO. 60L21				
ILLINOIS FED. AID PROJECT				