

F.A.P. RTE.	SECTION	COUNTY	TOTAL SHEETS	SHEET NO.
353	23-N-4	COOK	68	1
FED. ROAD DIST. NO.	ILLINOIS	CONTRACT NO. 60L21		

#68+2 = 70

D-91-657-10

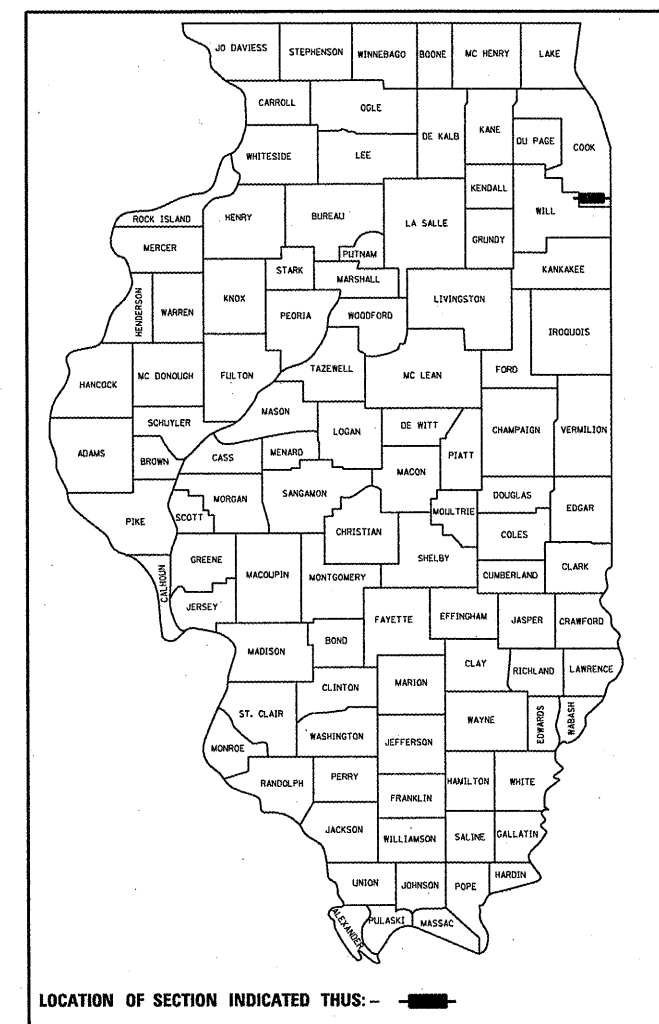
STATE OF ILLINOIS  
DEPARTMENT OF TRANSPORTATION  
DIVISION OF HIGHWAYS

**PROPOSED  
HIGHWAY PLANS**

F.A.P. ROUTE 353: US 30 (LINCOLN HIGHWAY)  
AT CENTRAL AVE.  
SECTION: 23-N-4  
CHANNELIZATION AND TRAFFIC SIGNAL MODERNIZATION  
PROJECT: HSIP-0353(021)  
COOK COUNTY  
C-91-657-10

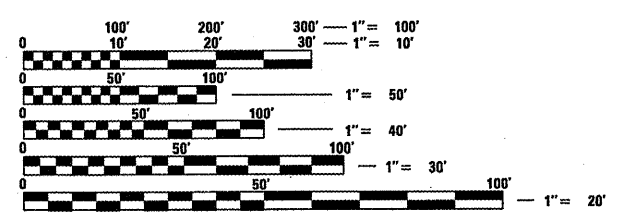
FOR INDEX OF SHEETS, SEE SHEET NO. 2

THIS PROJECT IS LOCATED IN THE  
VILLAGE OF MATTESON



**TRAFFIC DATA**

US 30 (LINCOLN HIGHWAY): 2009 ADT = 20,700  
SPEED LIMIT = 45 MPH  
CENTRAL AVE.: 2010 ADT = 2,650  
SPEED LIMIT = 30 MPH

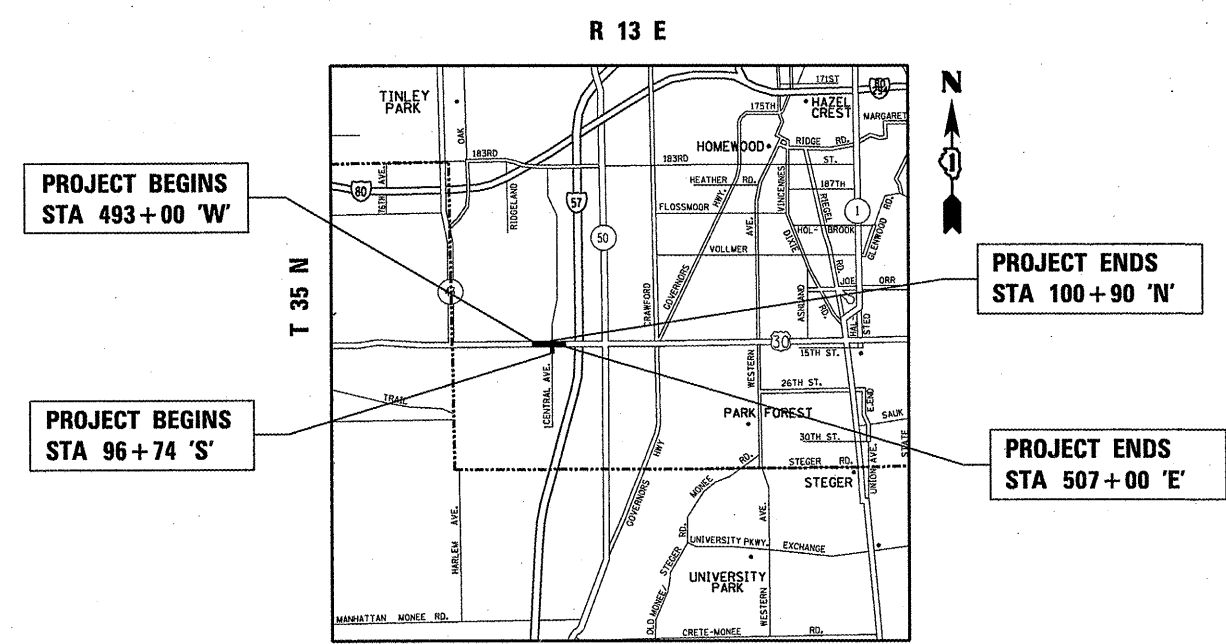


FULL SIZE PLANS HAVE BEEN PREPARED USING STANDARD ENGINEERING SCALES. REDUCED SIZED PLANS WILL NOT CONFORM TO STANDARD SCALES. IN MAKING MEASUREMENTS ON REDUCED PLANS, THE ABOVE SCALES MAY BE USED.

J.U.L.I.E.  
JOINT UTILITY LOCATION INFORMATION FOR EXCAVATION  
1-800-892-0123  
OR 811

PROJECT ENGINEER: ROBERT BORO (847)-705-4237  
PROJECT MANAGER: ISSAM RAYYAN

CONTRACT NO. 60L21



GROSS AND NET LENGTH = 1,400 FT. = 0.265 MILE

STATE OF ILLINOIS  
DEPARTMENT OF TRANSPORTATION  
DIVISION OF HIGHWAYS

SUBMITTED MARCH 22 20 12

*Diane M. O'Keefe*  
DEPUTY DIRECTOR OF HIGHWAYS, REGION ENGINEER

May 11 20 12  
*John D. Baranzelli, P.E.*  
ENGINEER OF DESIGN AND ENVIRONMENT

May 11 20 12  
*William R. Frey*  
DIRECTOR OF HIGHWAYS, CHIEF ENGINEER

PRINTED BY THE AUTHORITY  
OF THE STATE OF ILLINOIS