

STATE OF ILLINOIS  
DEPARTMENT OF TRANSPORTATION  
DIVISION OF HIGHWAYS

F.A.U. RTE.	SECTION	COUNTY	TOTAL SHEETS	SHEET NO.
2711	27-N-2	LAKE	53	1
FED. ROAD DIST. NO.		ILLINOIS	CONTRACT NO. 60P63	

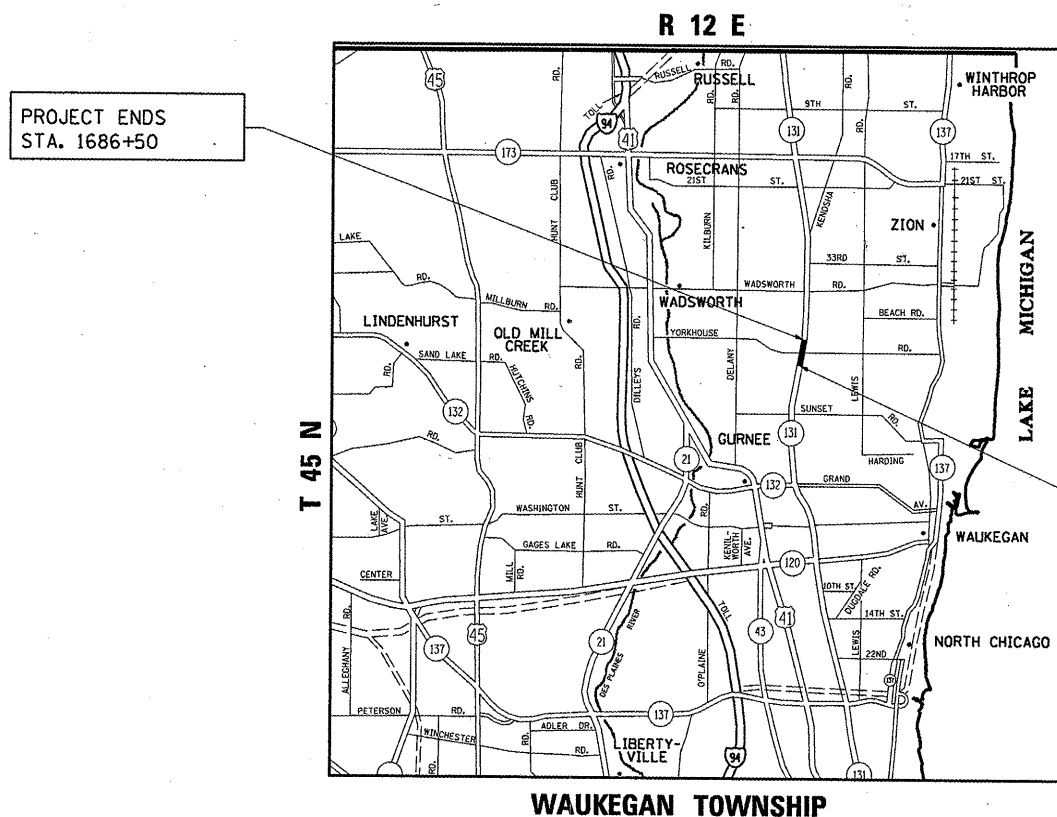
D -91-593-11

FOR INDEX OF SHEETS, SEE SHEET NO. 2

PROJECT IS LOCATED IN THE VILLAGE OF BEACH PARK

**PROPOSED  
HIGHWAY PLANS**

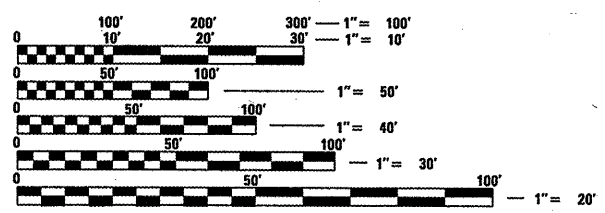
FAU 2711/ILL 131 (GREEN BAY ROAD)  
AT YORKHOUSE ROAD  
SECTION: 27-N-2  
INTERSECTION IMPROVEMENT  
PROJECT: HSIP-2711(018)  
LAKE COUNTY  
C-91-593-11



PROJECT ENDS  
STA. 1686+50

PROJECT BEGINS  
STA. 1671+50

**TRAFFIC DATA**  
2011 ADT = 23,200  
POSTED SPEED LIMIT = 50 MPH



FULL SIZE PLANS HAVE BEEN PREPARED USING STANDARD ENGINEERING SCALES. REDUCED SIZED PLANS WILL NOT CONFORM TO STANDARD SCALES. IN MAKING MEASUREMENTS ON REDUCED PLANS, THE ABOVE SCALES MAY BE USED.

J.U.L.I.E.  
JOINT UTILITY LOCATION INFORMATION FOR EXCAVATION  
1-800-892-0123  
OR 811

PROJECT ENGINEER KARI SMITH (847) 705-4437  
PROJECT MANAGER KEN ENG (847) 705-4247

GROSS AND NET LENGTH OF IMPROVEMENT = 1500.0 LINEAL FEET = 0.284 MILE

CONTRACT NO. 60P63

STATE OF ILLINOIS  
DEPARTMENT OF TRANSPORTATION  
DIVISION OF HIGHWAYS

SUBMITTED April 4 2012  
Diane O'Keefe 1450  
DEPUTY DIRECTOR OF HIGHWAYS, REGION ENGINEER

May 11 2012  
John D. Baranzelli, P.E.  
acty ENGINEER OF DESIGN AND ENVIRONMENT

May 11 2012  
William R. Frey  
acty DIRECTOR OF HIGHWAYS, CHIEF ENGINEER

PRINTED BY THE AUTHORITY  
OF THE STATE OF ILLINOIS