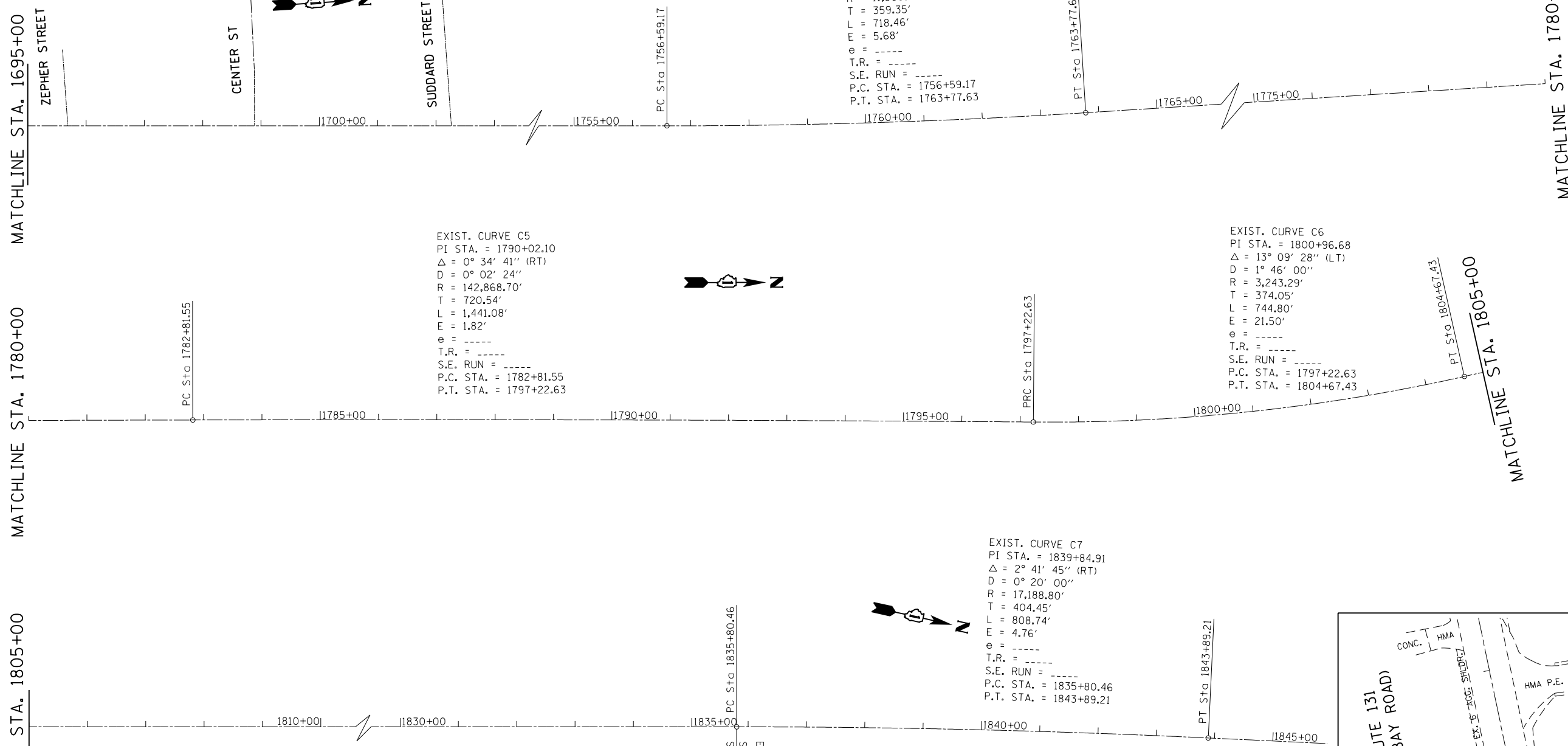


EXIST. CURVE C4
 PI STA. = 1760+18.52
 $\Delta = 3^\circ 37' 25''$ (LT)
 $D = 0^\circ 30' 16''$
 $R = 11,360.18'$
 $T = 359.35'$
 $L = 718.46'$
 $E = 5.68'$
 $e = \text{-----}$
 $T.R. = \text{-----}$
 $S.E. RUN = \text{-----}$
 $P.C. STA. = 1756+59.17$
 $P.T. STA. = 1763+77.63$

EXIST. CURVE C5
 PI STA. = 1790+02.10
 $\Delta = 0^\circ 34' 41''$ (RT)
 $D = 0^\circ 02' 24''$
 $R = 142,868.70'$
 $T = 720.54'$
 $L = 1,441.08'$
 $E = 1.82'$
 $e = \text{-----}$
 $T.R. = \text{-----}$
 $S.E. RUN = \text{-----}$
 $P.C. STA. = 1782+81.55$
 $P.T. STA. = 1797+22.63$

EXIST. CURVE C6
 PI STA. = 1800+96.68
 $\Delta = 13^\circ 09' 28''$ (LT)
 $D = 1^\circ 46' 00''$
 $R = 3,243.29'$
 $T = 374.05'$
 $L = 744.80'$
 $E = 21.50'$
 $e = \text{-----}$
 $T.R. = \text{-----}$
 $S.E. RUN = \text{-----}$
 $P.C. STA. = 1797+22.63$
 $P.T. STA. = 1804+67.43$

EXIST. CURVE C7
 PI STA. = 1839+84.91
 $\Delta = 2^\circ 41' 45''$ (RT)
 $D = 0^\circ 20' 00''$
 $R = 17,188.80'$
 $T = 404.45'$
 $L = 808.74'$
 $E = 4.76'$
 $e = \text{-----}$
 $T.R. = \text{-----}$
 $S.E. RUN = \text{-----}$
 $P.C. STA. = 1835+80.46$
 $P.T. STA. = 1843+89.21$



ALIGNMENT COORDINATES		IL. RTE. 131	
	STATION	N	E
PC	1756+59.17	2100162.3190	1107642.9779
PI	1760+18.52	2100521.0710	1107665.6298
PT	1763+77.63	2100880.3052	1107665.5670
PC	1782+81.55	2102784.2247	1107664.6530
PI	1790+02.10	2103504.7600	1107667.9439
PT	1797+22.63	2104225.2801	1107671.2286
PC	1797+22.63	2104225.2801	1107671.2286
PI	1800+96.68	2104600.9511	1107675.4635
PT	1804+67.43	2104964.5049	1107594.7822

ALIGNMENT COORDINATES		IL. RTE. 131	
	STATION	N	E
PC	1835+80.46	2108000.6431	1106922.6299
PI	1839+84.91	2108395.6002	1106835.1920
PT	1843+89.21	2108794.0875	1106766.4569
PC	1923+13.67	2116603.2137	1105419.3786
PI	1925+88.45	2116874.2053	1105372.6378
PT	1928+62.81	2117148.0075	1105352.0853

BENCHMARK CM-8
 ELEVATION 744.5698

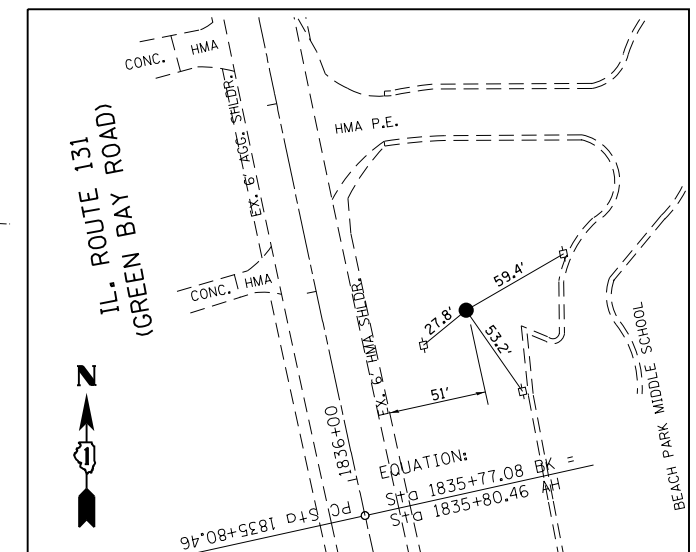
CHISLED "X" ON NORTH SIDE OF SEWER MANHOLE RIM
 NORTHWEST QUADRANT IL. RTE. 131 AND 29TH ST.

BENCHMARK CM-9
 ELEVATION 738.8011

CHISLED "C" ON WESTERLY EDGE OF TRIANGULAR SHAPED
 MEDIAN, WEST SIDE OF IL. RTE. 131, 0.15 MILES SOUTH OF
 33RD ST. (IN EXIT FOR NEW SUBDIVISION)

BENCHMARK CM-10
 ELEVATION 724.2120

CHISLED "C" IN CONCRETE SOUTHEAST CORNER OF CONCRETE
 FOUNDATION, HOUSE# 38602 WEST SIDE OF ROUTE 131 JUST
 SOUTH OF HART ST.



CONTROL POINT #1001

IRON ROD WITH CAP
 STA. 1836+76.916, 72.668' RT.
 N 2108110.1809
 E 1106973.0830
 ELEV. 755.795

FILE NAME =
 D159311-sh1-ATB.dgn

USER NAME = guillaumejp
 PLOT SCALE = 200.0000' / in.
 PLOT DATE = 4/3/2012

DESIGNED -
 DRAWN -
 CHECKED -
 DATE -

REVISED -
 REVISED -
 REVISED -
 REVISED -

STATE OF ILLINOIS
 DEPARTMENT OF TRANSPORTATION

ALIGNMENT, TIES AND BENCHMARKS
 IL. ROUTE 131 (GREEN BAY ROAD) AT YORKHOUSE ROAD

SCALE: 1" = 100' SHEET NO. OF SHEETS STA. 1668+00.00 TO STA. 1683+00.00

F.A.U. RTE.	SECTION	COUNTY	TOTAL SHEETS	SHEET NO.
2711	27-N-2	LAKE	53	12
CONTRACT NO. 60P63				
ILLINOIS FED. AID PROJECT				